

# ILLUSTRATED PARTS LIST

MODEL NAMES	SERIAL NUMBER PREFIX	MODELS
TITAN™ 50	11-	600152-02
TITAN™ 50	11-	600152-03
TITAN™ 57	11-	600151-02

McCulloch TITAN Chain Saws are identified by a model number (in this instance 600151 & 600152) followed by a suffix number (02, 03 etc.). Suffix numbers denote variations in parts or assemblies used in the manufacture of this product.

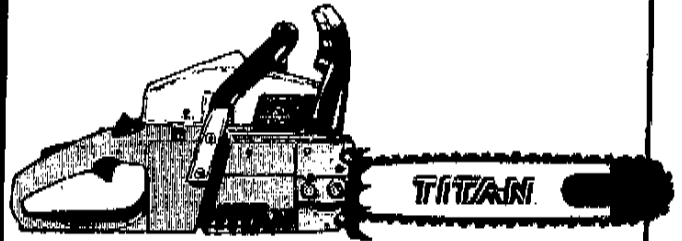
Part numbers listed in this I.P.L. which have a circled number ① or numbers preceding the description, are used only on the model or models identified by a circled number ① or numbers.

Part numbers which have one or more dots (.) preceding their descriptions may be ordered individually, but they are also included in the kit or assembly whose description begins directly above the dot(s).

The policy of McCulloch Corporation is one of continual improvement in design, manufacturing and engineering advancement wherever possible to assure still finer power tools. Hence, specifications, equipment, colors, design and manufacturer's suggested list prices are subject to change without notice and McCulloch Corporation reserves the right to make such changes without prior notification or obligation to backfit or supply backfit components for units previously shipped from the factory.

**AUGUST 1988**

## TITAN 50/57

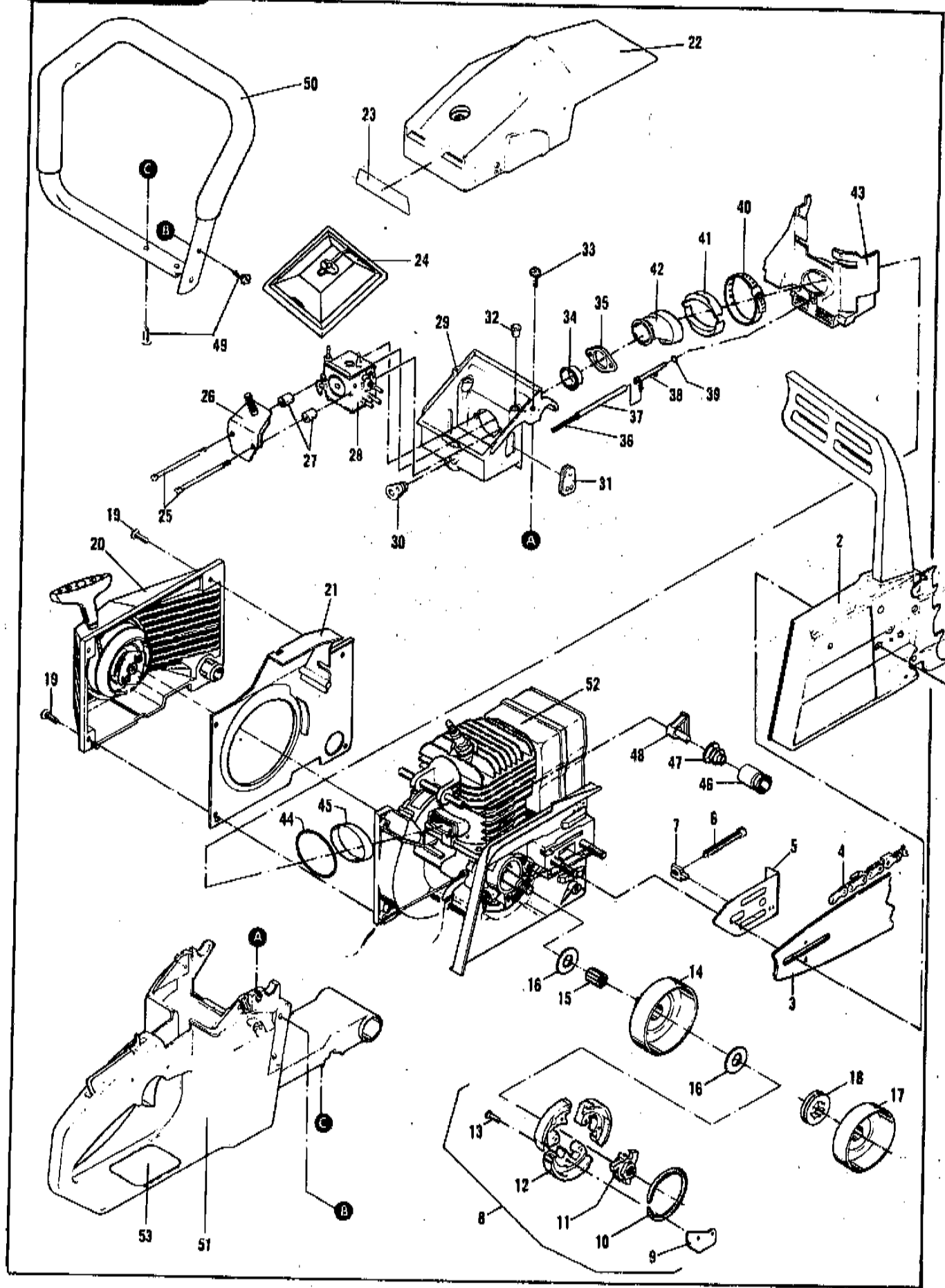


### CONTENTS

	PAGE
FIGURE 1 General Assembly	2
FIGURE 2 Starter Assembly	3
FIGURE 3 Chain Brake Assembly	4
FIGURE 4 Air Cleaner Cover Assemblies	5
FIGURE 5 Carburetor Heater Kit	5
FIGURE 6 Carburetor Assembly	6
FIGURE 7 Powerhead Assembly	7
FIGURE 8 Main Frame Assembly	9
FIGURE 9 Service Specifications	10
FIGURE 10 Service Tools	10

**McCULLOCH**

# Figure 1 GENERAL ASSEMBLY

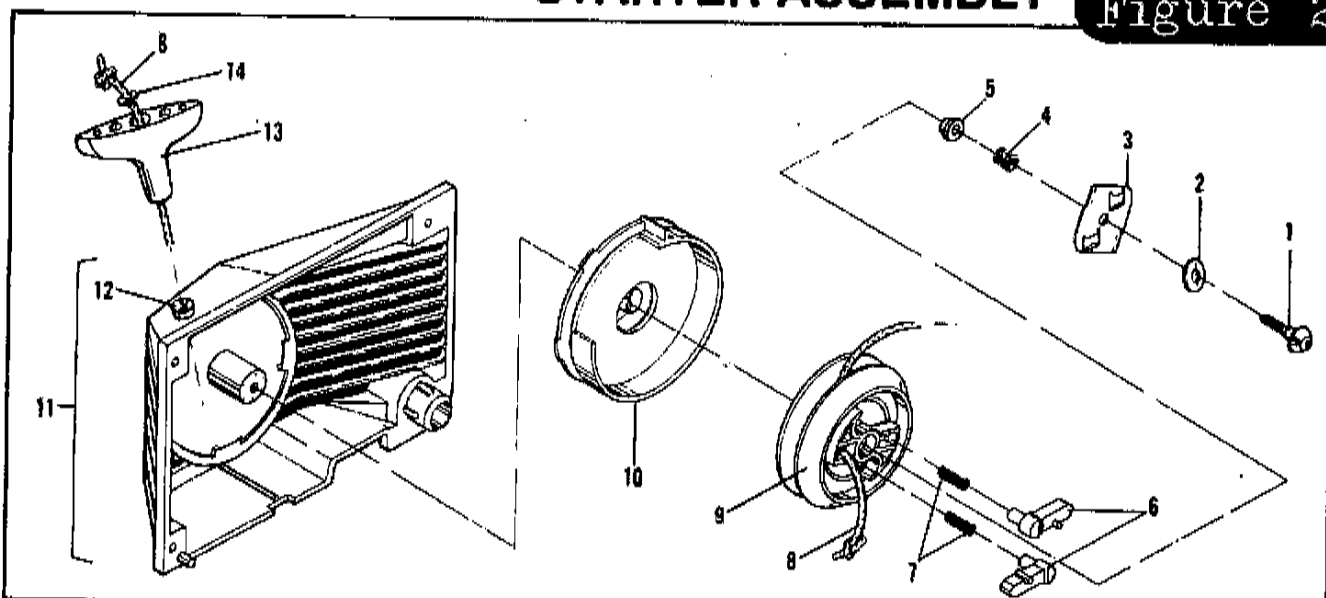


**FIGURE 1 GENERAL ASSEMBLY**

ITEM NO.	PART NUMBER	DESCRIPTION	UNITS PER ASY.	ITEM NO.	PART NUMBER	DESCRIPTION	UNITS PER ASY.
1	218042	Nut-Flange M8	2	26	219103	Shield-Spitback	1
2	Fig. 3	Brake Asy-Chain	1	27	218757	Spacer-Shield	2
3	-- --	① Bar	1	28	Fig. 6	Carburetor	1
4	-- --	① Chain	1	29	218723	Box-Air	1
5	217594	Plate-Bar	1	30	218761	Grommet-Throttle/Choke	1
6	217640	Screw-Bar Adjustment	1	31	91995-01	Gommet-Carburetor Needles	1
7	217479	Nut-Bar Adjustment	1	32	218922	Bushing-Hose	2
8	222997	Clutch Asy (3 Shoe)	1	33	217937	Screw-10-24x1 (20 in. lb. torque)	2
9	-- --	. Plate-Shoe	3	34	218809	Eyelet	1
10	-- --	. Spring Asy-Clutch	1	35	219871	Flange-Carburetor Mount	1
11	-- --	. Rotor-Clutch	1	36	93998	Spring-Oil Hose	1
12	-- --	. Shoe-clutch	1	37	219971	Hose-Fuel	1
13	-- --	. Rivet	6	38	219447	Barb-Pulse	1
14	218925	Drum/Spkt Asy(.325)	1	39	219448	Ring-"O"	1
	218928	Drum/Spkt Asy(.375)	1	40	219458	Clamp	1
15	110971	Bearing-Needle	2	41	219439	Spacer	1
16	86958	Washer-Shim	1	42	219457	Boot-Intake	1
17	223192	② Drum-Clutch	1	43	219455	Shroud-Cylinder	1
18	223193	② Rim-Floating (.325)	1	44	219459	Ring-"O"	1
	86951	② Rim-Floating (.375)	1	45	219456	Sleeve	1
19	217936	Screw-10-24x.75 (50 in. lb. torque)	4	46	218371	Carrier-Rear Mount	2
20	Fig. 2	Starter Assembly	1	47	218801	Mount-Rear	2
21	219962	Baffle-Fan	1	48	218362	Retainer-Rear Mount	2
22	Fig. 4	Cover Assemblies-Air	1	49	217936	Screw-10-24x.75 (50 in. lb. torque)	2
23	223039	③ Decal-Warning	1	50	222242	Frame-"C"	1
	223040	④ Decal-Warning	1	51	Fig. 8	Main Frame Assembly	1
24	223185	Filter-Air	1	52	Fig. 7	Powerhead Assembly	1
25	219231	Screw-10-24x2.19 (45 in. lb. torque)	2	53	219058	Label-Safety	1

- ① Refer to Chain, Bar And Accessories Catalog - 180119-R1
- ② Optional Equipment only
- ③ Used on 11600152-02 & 11600152-03 units only
- ④ Used on 11600151-02 units only

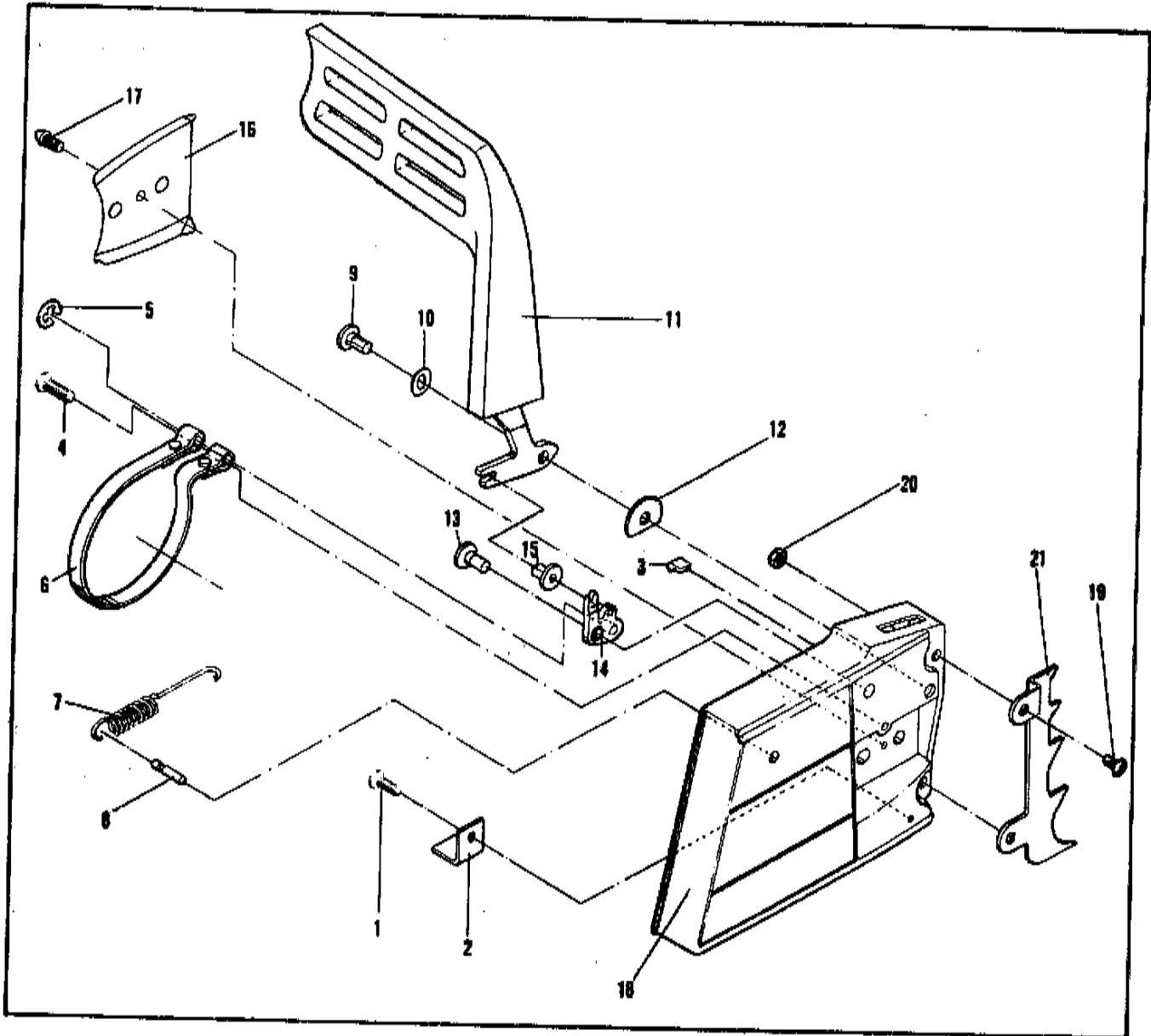
**STARTER ASSEMBLY** Figure 2



ITEM NO.	PART NUMBER	DESCRIPTION	UNITS PER ASY.	ITEM NO.	PART NUMBER	DESCRIPTION	UNITS PER ASY.
	222424	Starter Assembly	1	8	218051	. Rope-Starter (46"-48")	1
1	218056	. Screw-Pawl Plate	1	9	217889	. Pulley-Starter	1
2	218055	. Washer-Pawl Plate	1	10	217891	. Spring/Housing Assembly	1
3	217893	. Plate-Pawl	1	11	223190	. Housing/Guide Assembly	1
4	218054	. Spring-Pawl Plate	1	12	218050	. Guide-Rope	1
5	218053	. Bushing-Pulley	1	13	87851	Handle-Starter	1
6	217890	. Pawl	2	14	105490	Washer	1
7	218052	. Spring-Pawl	2				

Figure 3

# CHAIN BRAKE ASSEMBLY

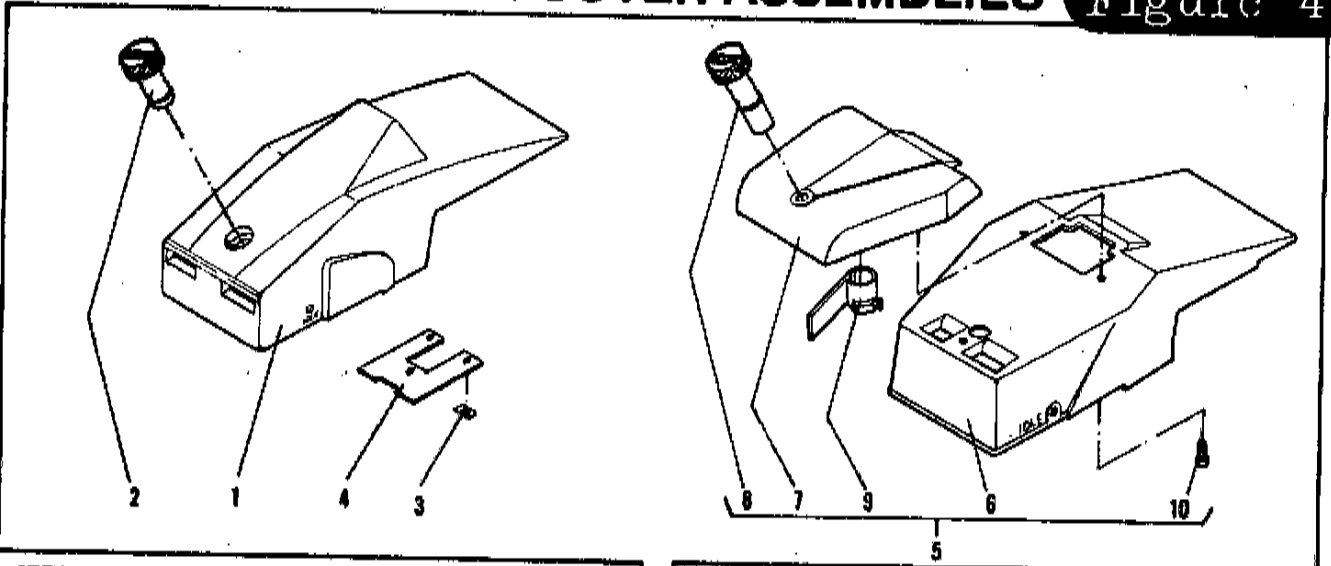


ITEM NO.	PART NUMBER	DESCRIPTION	UNITS PER ASY.
1	222250	Chain Brake Assembly	1
	219195	. Screw-10-24x.50 (45-50 in. lb. torque)	1
2	218641	. Stop-Chain	1
3	110737	. Clip- "U"	1
4	218361	. Screw-1/4-20x.75 (85-90 in. lb. torque)	1
5	218079	. Clip- "E"	1
6	217472	. Band-Brake	1
7	217440	. Spring-Chain Brake	1
8	217449	. Pin-Spring Hook	1
9	217450	. Pivot-Lever	1
10	218679	. Washer-Spring	1

ITEM NO.	PART NUMBER	DESCRIPTION	UNITS PER ASY.
11	219983	. Flag-Brake	1
12	218674	. Washer	1
13	217448	. Pivot-Latch	1
14	217454	. Latch-Chain Brake	1
15	218956	. Slider-Latch	1
16	218832	. Plate-Bar - Str. Rubber	1
17	218719	. Screw-Drive	1
18	222249	. Housing-Brake	1
19	217935	Screw-10-24x.50 (45-50 in. lb. torque)	2
20	218315	Nut-10-24	2
21	218103	Spike	1

# AIR CLEANER COVER ASSEMBLIES

Figure 4



ITEM NO.	PART NUMBER	DESCRIPTION	UNITS PER ASY.
1	219461 ①③	Cover Asy-Air Box	1
2	222206	Knob	1
3	-- --	Nut-Press	3
4	-- --	Plate	1

ITEM NO.	PART NUMBER	DESCRIPTION	UNITS PER ASY.
5	219466 ②	Cover Asy-Air Box	1
6	219462	. Cover-Air Box	1
7	219463	. Cover-Top	1
8	219464	. Knob	1
9	219465	. Valve-Heater	1
10	110706	. Screw	3

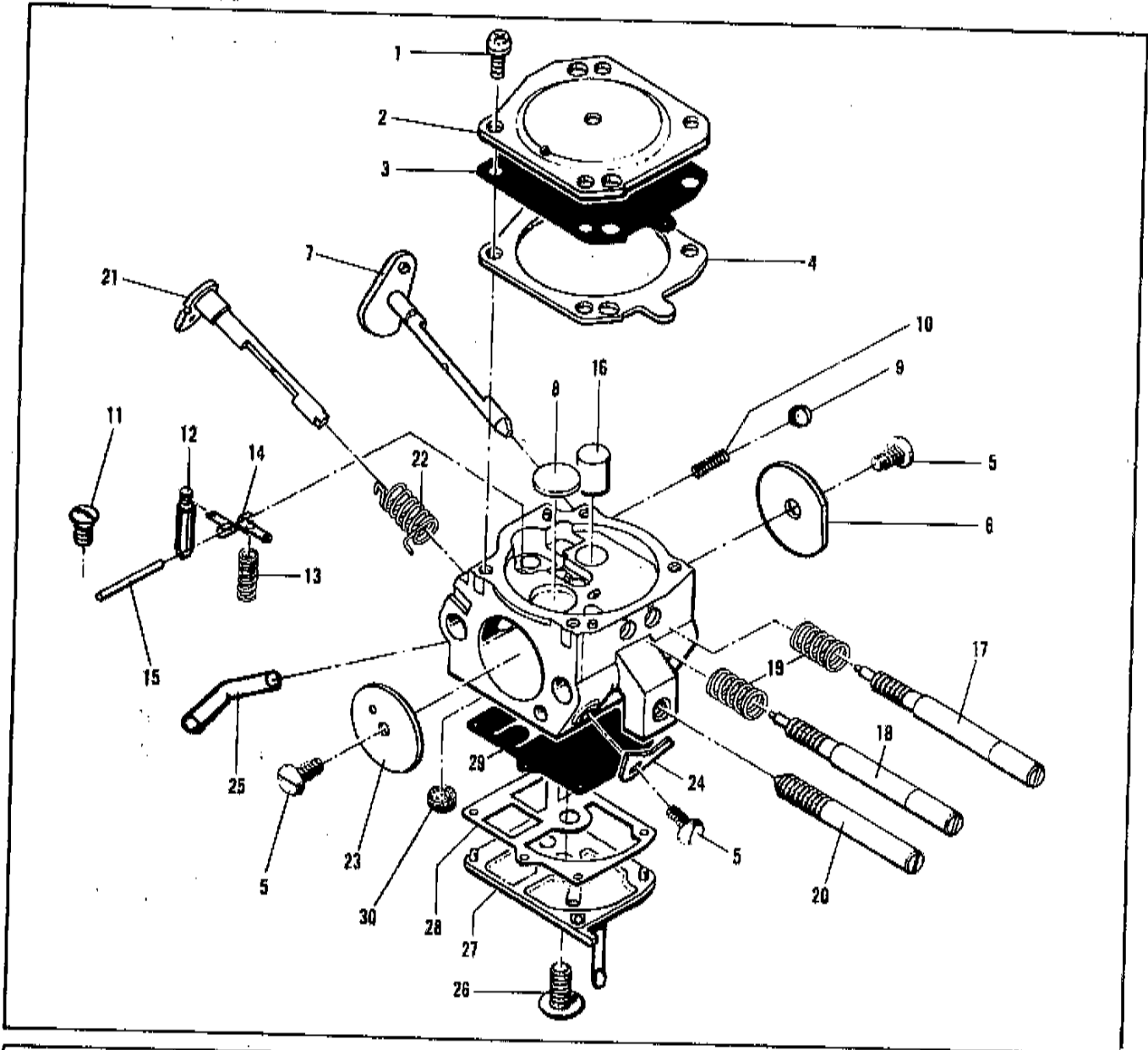
① Used as original equipment on 11600152-02 & 11600152-03 models only.

③ Used on 11600151-02 only.

② Air Box Cover with carburetor heater is optional equipment for models 11600152-02 and 11600152-03 and can be purchased separately.

Figure 6

# CARBURETOR ASSEMBLY



ITEM NO.	PART NUMBER	DESCRIPTION	UNITS PER ASY.
	219449-01	Walbro HDA 77	1
1	---	① . Screw-Metering Cover	4
2	---	. Cover-Metering Diaphragm	1
3	---	①② . Diaphragm Asy-Metering	1
4	---	①② . Gasket-Diaphragm	1
5	---	① . Screw	3
6	---	. Shutter-Choke	1
7	---	. Shaft/Lever Asy Choke	1
8	---	① . Plug-Welch	1
9	---	① . Ball-Choke Friction	1
10	---	② . Spring-Choke Friction	1
11	---	① . Screw-Lever Pin	1
12	---	① . Valve-Inlet Needle	1
13	---	① . Spring-Metering Lever	1
14	---	① . Lever-Metering	1
15	---	① . Pin-Metering Lever	1

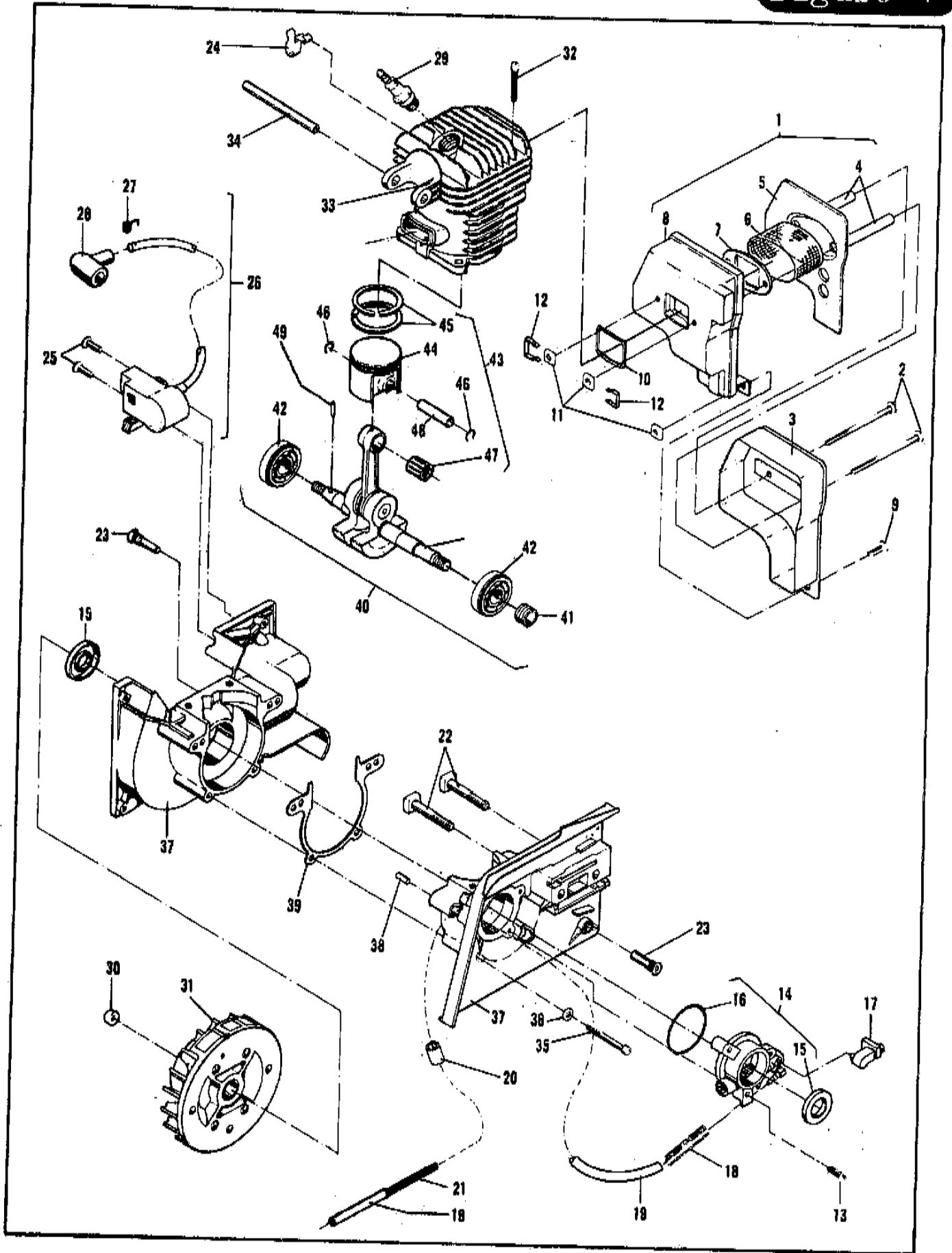
ITEM NO.	PART NUMBER	DESCRIPTION	UNITS PER ASY.
16	---	. Nozzle Asy/Check Valve	1
17	---	① . Needle-High Speed	1
18	---	① . Needle-Low Speed	1
19	---	① . Spring-Needles	2
20	---	. Screw-Idle Adjustment	1
21	---	. Shaft/Lever Asy	1
22	---	① . Spring-Throttle Return	1
23	---	. Shutter-Throttle	1
24	---	. Stop-Throttle	1
25	---	. Fitting-Elbow	1
26	---	. Screw-Pump Cover	1
27	---	. Cover-Fuel Pump	1
28	---	①② . Gasket-Fuel Pump	1
29	---	①② . Diaphragm-Fuel Pump	1
30	---	① . Screen-Fuel Inlet	1

NOTE: Only those parts listed in repair kits are available for service replacement.

① Contained in Major Repair Kit, P/N 223078  
 ② Contained in Gasket/Diaphragm Kit, P/N 229192

# POWERHEAD ASSEMBLY

Figure 7



**FIGURE 7 POWERHEAD ASSEMBLY**

ITEM NO.	PART NUMBER	DESCRIPTION	UNITS PER ASY.
1	222980	Muffler Assembly	1
2	217942	. Screw-10-24x2.62 (70 in. lb. torque)	2
3	223006	. Muffler Body-Outer	1
4	218030	. Tube-Bolt	2
5	218725	. Baffle	1
6	217629	. Screen-Spark Arrester	1
7	217627	. Plate-Reinforcement	1
8	222971	. Body-Inner	1
9	217935	Screw-10-24x.50 (30 in. lb. torque)	1
10	215947	Gasket-Exhaust	1
11	218005	Nut-10-24	3
12	223076	Retainer-Nut	2
13	217936	Screw-10-24x.75 (30 in. lb. torque)	3
14	222419	① Kit-011 Pump	1
15	215892	① . Seal-011	2
16	217867	. Ring- "O"	1
17	219972	Connector-011 Pump	1
18	218669	Guard-011 Hose	1
19	218482	Hose-011 Pump	1
20	219051	Sleeve-011 Hose	1
21	218589	Spring-011 Hose	1
22	92459	Bolt-Bar	2
23	217781	Screw-Mount (50 in. lb. torque)	2
24	218865	Clip-Wire	1
25	217936	Screw-10-24x.75 (35-45 in. lb. torque)	2
26	223068	Ignition Assembly	1
27	102556	. Connector-Spark Plug	1
28	95266	. Boot-Spark Plug	1
29	93017	Plug-Spark (108-135 in. lb. torque)	1

ITEM NO.	PART NUMBER	DESCRIPTION	UNITS PER ASY.
30	218042	Nut-Flywheel (150-168 in. lb. torque)	2
31	218635	Flywheel Assembly	1
32	217943	Screw-1/4-20x1.0 (90 in. lb. torque)	4
33	223227	② Cylinder Assembly (TITAN 50)	1
34	218149	. Pin-Roll	1
33	223226	③ Cylinder Assembly (TITAN 57)	1
34	218149	. Pin-Roll	1
35	217721	Screw-10-24x1.625 (70 in. lb. torque)	4
36	216591	Washer-Flat	4
37	219867	Crankcase Assembly	1
38	215834	. Dowel-Pin	2
39	222595	Gasket-Crankcase	1
40	218897	② C' Shaft/C-Rod/Worm Gear (T. 50)	1
41	217273	. Wormgear	1
42	215946	. Bearing-Ball	2
40	219858	③ C' Shaft/C-Rod Asy (TITAN 57)	1
41	217273	Wormgear	1
42	215946	Bearing-Ball	2
43	218952	② Piston Assembly	1
44	218751	. Piston	1
45	215825	. Ring-Piston	2
46	215876	. Ring-Snap	2
47	215837	. Bearing	1
48	215836	. Pin-Piston	1
43	223191	③ Piston Assembly	1
44	219862	. Piston	1
45	219863	. Ring-Piston	2
46	215876	. Ring-Snap	2
47	215837	. Bearing	1
48	215836	. Pin-Piston	1
49	222683	Pin-Timing	1

① Although 2 seals are required for the unit, only one seal is included with the Oiler Assembly.

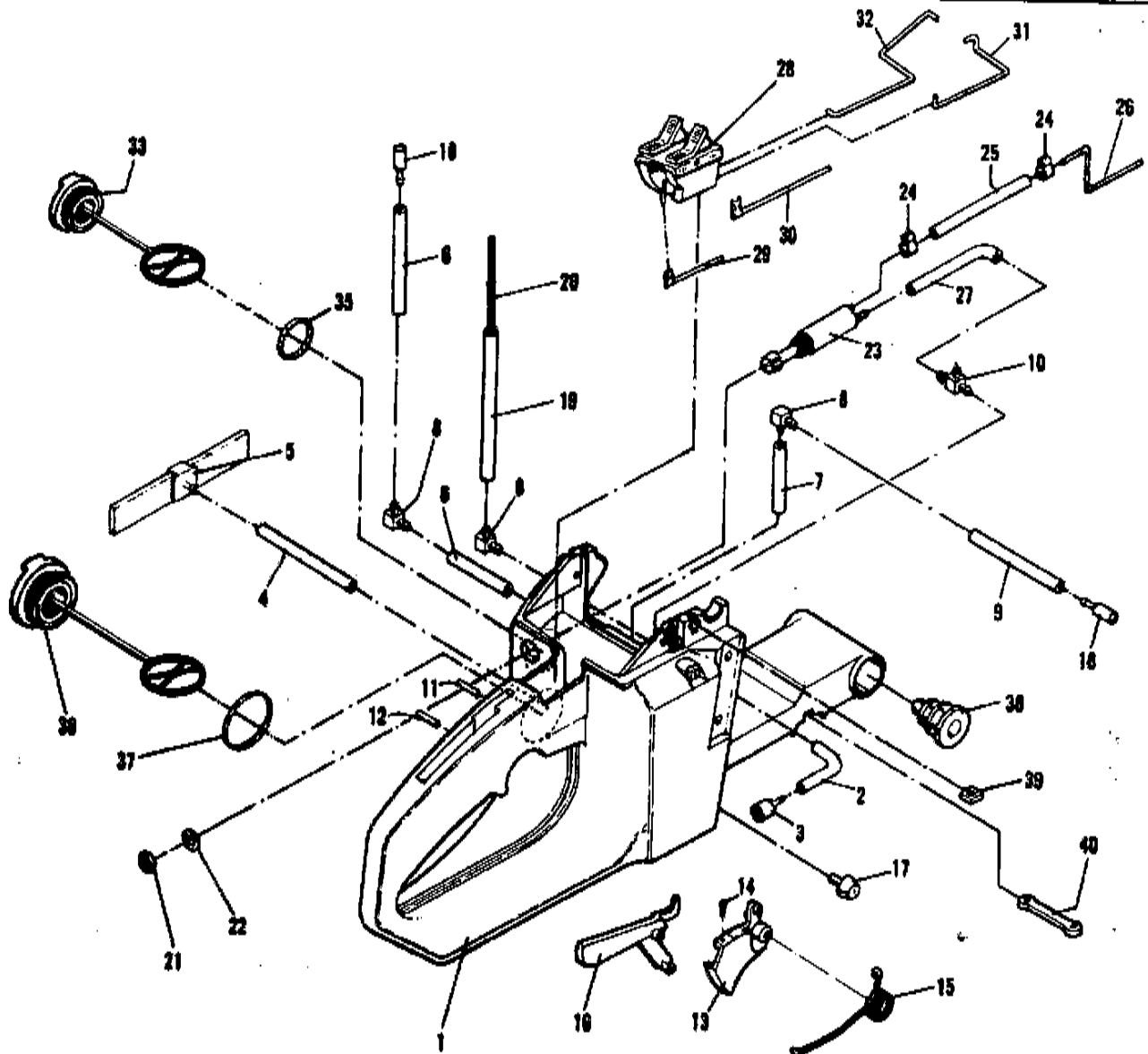
② Used on 11600152-02 & 11600152-03 units only.

③ Used on 11600151-02 unit only.



# MAIN FRAME ASSEMBLY

Figure 8



ITEM NO.	PART NUMBER	DESCRIPTION	UNITS PER ASY.
1	223222	Mainframe Assembly	1
	222442	. Mainframe-Weldment	1
2	218535	. Hose-Oil	1
3	92465	. Pickup-Oil	1
4	218535	. Hose-Fuel Tank	1
5	218895	. Pickup-Fuel Assy	1
6	219059	. Hose-Vent (Fuel)	2
7	219967	. Hose-Vent (Oil)	1
8	218896	. Barb-Hose	3
9	219966	. Hose-Vent (Oil)	1
10	219914	. Barb- "7"	1
11	218491	. Pin-Trigger	1
12	218492	. Pin-Trigger Release	1
13	93538-01	. Trigger Assembly	1
14	111013	. Screw-5-40x.50	1
15	93771	. Spring-Trigger	1
16	218836	. Release-Trigger	1
17	218122	. Bumper-Cut Control	2
18	218260	Vent-Fuel/Oil	2
19	219971	Hose-Fuel	1
20	93998	Spring-Oil Nose	1

ITEM NO.	PART NUMBER	DESCRIPTION	UNITS PER ASY.
21	219917	Nut-15/32	1
22	219918	Washer-Lock	1
23	222783	Oiler-Manual	1
24	219915	Clamp	2
25	219911	Hose-Oil Outlet	1
26	219913	Tube-Oil Outlet	1
27	219912	Hose-Oil Inlet	1
28	223069	Control Assy	1
29	218348	Wire-Ground	1
30	218349	Wire-Switch	1
31	222248	Rod-Choke	1
32	218724	Rod-Throttle	1
33	235552	Cap Assy-Oil (Non-Vented)	1
34			
35	235511	. Ring- "0"	1
36	235551	Cap Assy-Fuel	1
37	235510	. Ring- "0"	1
38	218124	Mount-Front	2
39	218006	Nut-10-24	2
40	218117	Plate-Nut	1

## Figure 9

## SERVICE SPECIFICATIONS

DISPLACEMENT C.I.D. . . . . .	TITAN 50 51 cm <sup>3</sup>
. . . . .	TITAN 57 57 <sup>3</sup>
BORE AND STROKE (mm) . . . . .	TITAN 50 45 x 32
. . . . .	TITAN 57 47 x 33
CYLINDER BORE . . . . .	Chrome
IGNITION . . . . .	Electronic
CLUTCH ENGAGEMENT SPEED . . . . .	2900-3350 RPM
IDLE SPEED . . . . .	2200-2500 RPM
LAMINATION / FLYWHEEL GAP (mm) . . . . .	0,25 - 0,3
DRY WEIGHT (Power Unit Only) . . . . .	TITAN 50 5,6 Kg
. . . . .	TITAN 57 5,7 Kg
AUTOMATIC OILER . . . . .	Geared Adjustable
MANUAL OILER . . . . .	YES
OIL TANK CAPACITY (cm <sup>3</sup> ) . . . . .	220
FUEL TANK CAPACITY (cm <sup>3</sup> ) . . . . .	600
CARBURETOR . . . . .	All Position
BAR LENGTH . . . . .	TITAN 50 40-45 cm (.325")
. . . . .	TITAN 57 40-45 cm (.325") / 40-50 cm (.375")
ROPE-STARTER . . . . .	Length 120 cm
. . . . .	Diameter 3-3,3 mm

## Figure 10

## SERVICE TOOLS

Drive T-25 (Cylinder) . . . . .	226147
Puller-Piston Pin . . . . .	236020
Adaptor-Pressure Test Intake (Airbox) . . . . .	94416
Gauge/Bulb-Pressure Test . . . . .	215432
Scrench-13mm x 5/8 . . . . .	214221