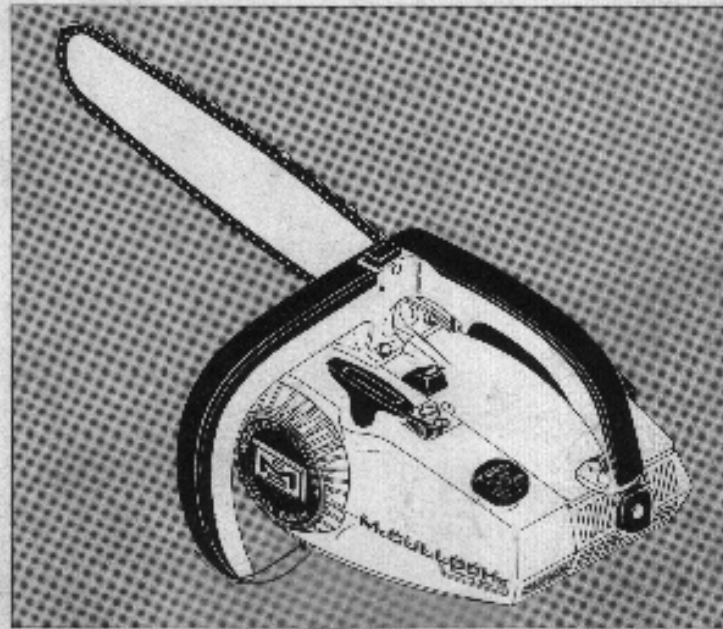


Power Mac 6 Chain Saw

MANUAL MODEL NO. 600085
AUTOMATIC MODEL NO. 600086

SERIAL NOS. PREFIXED 12-, A10- & C12-
SERIAL NOS. PREFIXED 10-, A10- & C10-

ILLUSTRATED PARTS LIST



August 1969

The policy of McCulloch Corporation is one of continual improvement in design, manufacturing and engineering advancement wherever possible to assure still finer two-cycle power tools. Hence, specifications, equipment, colors, design and manufacturer's suggested list prices are subject to change without notice and McCulloch Corporation reserves the right to make such changes without prior notification or obligation to backfit or supply backfit components for units previously shipped from the factory.

	Page
Figure 1. General View - Exploded	2
Figure 2. Manual Oiler Housing Assemblies	4
Figure 3. Automatic Oiler Housing Assemblies	5
Figure 4. Powerhead Assembly	6
Figure 5. Carburetor	8
Figure 6. Fan Housing and Starter Assembly	10



McCULLOCH

COPYRIGHT 1969 U.S.A.
McCULLOCH CORPORATION

83199

Power Mac 6

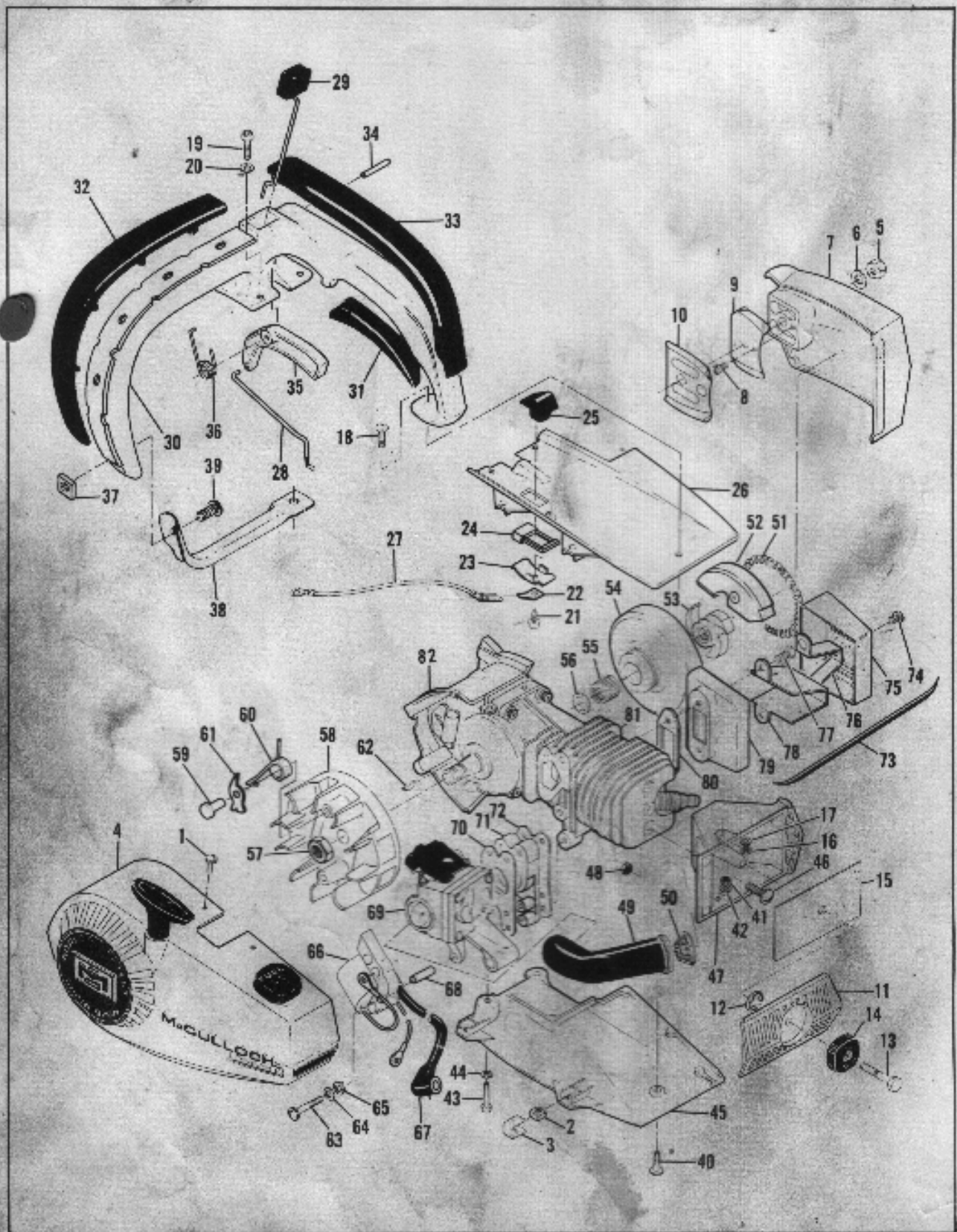


Figure 1. General View - Exploded

FIGURE 1. GENERAL VIEW - EXPLODED

Item No.	Part Number	Description	Units Per Assy
1	110597	Screw - Pan hd 8-32 x 7/16	6
2	68963	Nut - Square 8-32	6
3	68770	Retainer - Nut	6
4		Fan Housing & Starter Assy (See Figure 6)	
5	110530	Nut - Hex 1/4	1
6	100311	Washer - 1/4	1
7	-68686	Guard - Clutch	1
8	110620	Screw - Fil hd 6-32 x 7/16 s/t	1
	67667	Set - Bar Plate	1
9	68673	. Plate - Bar outer	1
10	67588	. Plate - Bar inner	1
11	69006	Cover - Air cleaner	1
12	110546	"E" Ring	1
13	69202	Screw - Cover	1
14	68816	Knob - Cover	1
15	68685	Screen - Air cleaner	1
16	100955	Nut - Hex 8-32	1
17	100080	Washer - #8	1
18	110584	Screw - Pan hd 8-32 x 3/4	1
19	110585	Screw - Skt hd 10-24 x 3/4	2
20	110264	Washer - #10	2
21	110597	Screw - Pan hd 8-32 x 1/2 (SEMS)	1
22	69679	Terminal - Stop switch wire	1
23	62451	Contact - Switch	1
24	62950A	Base - Switch	1
25	68846	Button - Switch	1
26	69009	Shroud - Top	1
27	69344	Wire Assy - Stop switch	1
28	69194	Rod - Throttle	1
29	69053	Button & Rod Assy - Oiler	1
30	69232	Handle Assy	1
31	67583	. Grip - Lower	1
32	69567	. Grip - Side	1
33	67584	. Grip - Top	1
34	105654	. Pin - Trigger	1
35	68621	. Trigger	1
36	69201	. Spring - Trigger	1
37	68963	. Nut - Square 8-32	1
38	* 68853	Strap - Handle	1
39	* 110597	. Screw - Pan hd 8-32 x 1/2	1
40	110584	Screw - Pan hd 8-32 x 3/4	1
41	100955	Nut - Hex 8-32	1
42	100080	Washer - #8	1
43	110585	Screw - Skt hd 10-24 x 3/4	2

Item No.	Part Number	Description	Units Per Assy
44	110264	Washer - #10	2
45	69010	Shroud - Bottom	1
46	110584	Screw - Pan hd 8-32 x 3/4	2
47	69005	Housing - Air cleaner	1
48	100955	Nut - Hex 8-32	2
49	67195	Duct - Air	1
50	68623	Shaft - Duct	1
	-63156	Clutch Assy	1
51	69358	. Spring	1
52	-83220	. Shoe	3
53	68778	. Spider	1
54	67656	Drum & Sprocket Assy	1
55	67650	Bearing - Sprocket	1
56	67303	Washer - Sprocket	1
57	101391	Nut - Hex 3/8-24	1
58	69806	Flywheel & Pawl Assy	1
59	68796	. Pin - Pawl	2
60	67814	. Spring - Pawl	2
61	69103	. Pawl - Starter	2
62	103879	Key - Flywheel	1
63	110586	Screw - Pan hd 8-32 x 1-3/4	3
64	100080	Washer - #8	3
65	67177	Washer - Insulator	3
66	68707	Coil & Lamination Assy	1
67	-69666	. Wire Assy - Spark plug	1
68	68198	Tube - Insulating	3
69		Carburetor Assy (See Figure 5)	
70	68197	Gasket - Carburetor	1
71	68195	Insulator - Carburetor	1
72	68196	Gasket - Insulator	1
73	68768	Kit - Spark arrester	1
74	110597	. Screw - Pan hd 8-32 x 7/16	1
75	69160	. Cover - Spark arrester	1
76	69725	. Clip - Locking	1
77	110581	. Screw - Hex hd 10-24 x 3/8	2
78	68669	. Baffle	1
79	68781	. Body	1
80	68747	Gasket - Spark arrester	1
81		Powerhead Assy (See Figure 4)	
82		Oiler Housing Assy (Manual) (See Figure 2)	
		Oiler Housing Assy (Automatic) (See Figure 3)	

* Furnished with all saws except Model 600085 Serial Numbers Prefixed 12- and C12-

Part numbers which have changed since the previous printing of the illustrated parts list covering these saws, are indicated by a dash (-) preceding the new part number.

FIGURE 2. MANUAL OILER

Item No.	Part Number	Description	Units Per Assy
1	101191	Nut - Hex 10-24	2
2	104738	Screw - Hex hd 10-24 x 1/2	2
3	68412	Spike	1
4	88809	Cap - Oil	1
5	101146	"O" Ring	1
6	105248	Screw - Rd hd 8-32 x 5/8 (SEMS)	2
7	62262	Cap - Oil pump	1
8	68603	Plunger - Oil pump	1
9	101056	"O" Ring	1
10	66687	Spring - Plunger	1
11	68604	Body - Oil pump	1
12	62909	Valve - Oiler	1

Item No.	Part Number	Description	Units Per Assy
13	68688	Diaphragm - Oil pump	1
14	67565	Spring - Diaphragm	1
15	68686	Tank Assy - Oil	1
16	110587	. Screw - Fil hd 8-32 x 1-1/2	1
17	100955	. Nut - Hex 6-32	1
18	110525	. Washer - Wavey	1
19	68656	. Nut - Adjustment	1
20	100080	. Washer - 48	1
21	68687	. Bolt - Bar	1
22	68140	Pickup Assy - Oil	1
23	67552	. Screen	1
24	67569	. Weight	1
25	67568	. Hose	1

[Order McCulloch Power Mac 6 parts on eBay](#)

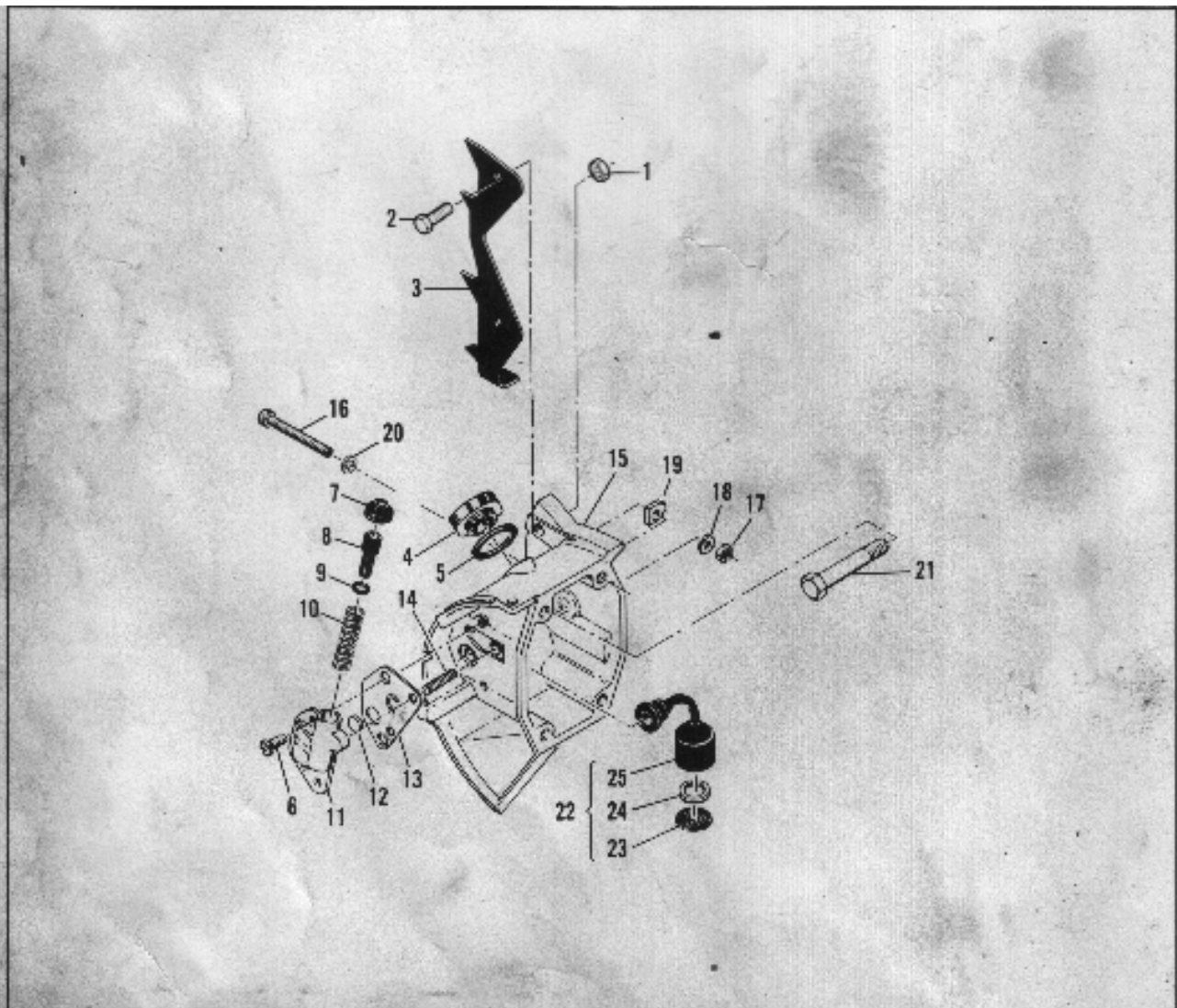


Figure 2. Manual Oiler Housing Assemblies

FIGURE 3. AUTOMATIC OILER

Item No.	Part Number	Description	Units Per Assy
1	101191	Nut - Hex 10-24	2
2	104738	Screw - Hex hd 10-24 x 1/2	2
3	68412	Spike	1
4	68809	Cap - Oil	1
5	101148	"O" Ring	1
6	-83591	Cylinder Assy - Oil Pump	1
7	-105603	"O" Ring	1
8	-105614	"O" Ring	2
9	105248	Screw - Rd hd 8-32 x 5/8 (SEMS)	2
10	62262	Cap - Oil pump	1
11	68603	Plunger - Oil pump	1
12	101056	"O" Ring	1
13	66687	Spring - Plunger	1
14	-83189	Body - Oil pump	1
15	-83185	Gasket - Oil pump	1
16	82909	Valve - Oiler	1
17	-83597	Tank Assy - Oil	1
18	110587	Screw - Fil hd 8-32 x 1-1/2	1
19	100955	Nut - Hex 6-32	1
20	110525	Washer - Wavey	1
21	68656	Nut - Adjustment	1
22	100060	Washer - #8	1
23	68687	Bolt - Bar	1
24	68140	Pickup Assy - Oil	1
25	67552	Screen	1
26	67569	Weight	1
27	67568	Hose	1
28	-105248	Screw - Rd hd 8-32 x 5/8 (SEMS)	2
29	-83186	Cover - Oil pump	1
30	-83187	Gasket	1
31	-105603	"O" Ring	1
32	-83184	Ring - Oiler piston	1
33	-83181	Piston Assy - Oiler	1
34	-83180	Spring - Oiler piston	1

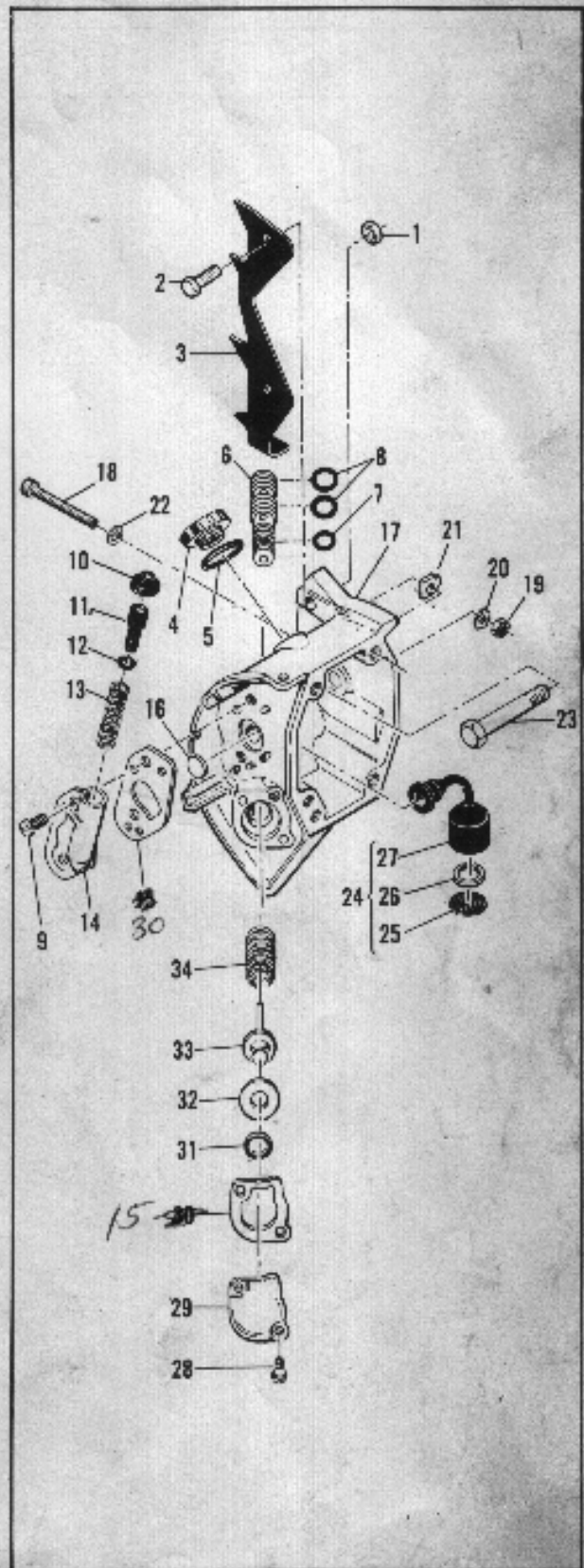


Figure 3. Automatic Oiler Housing Assemblies

Power Mac 6

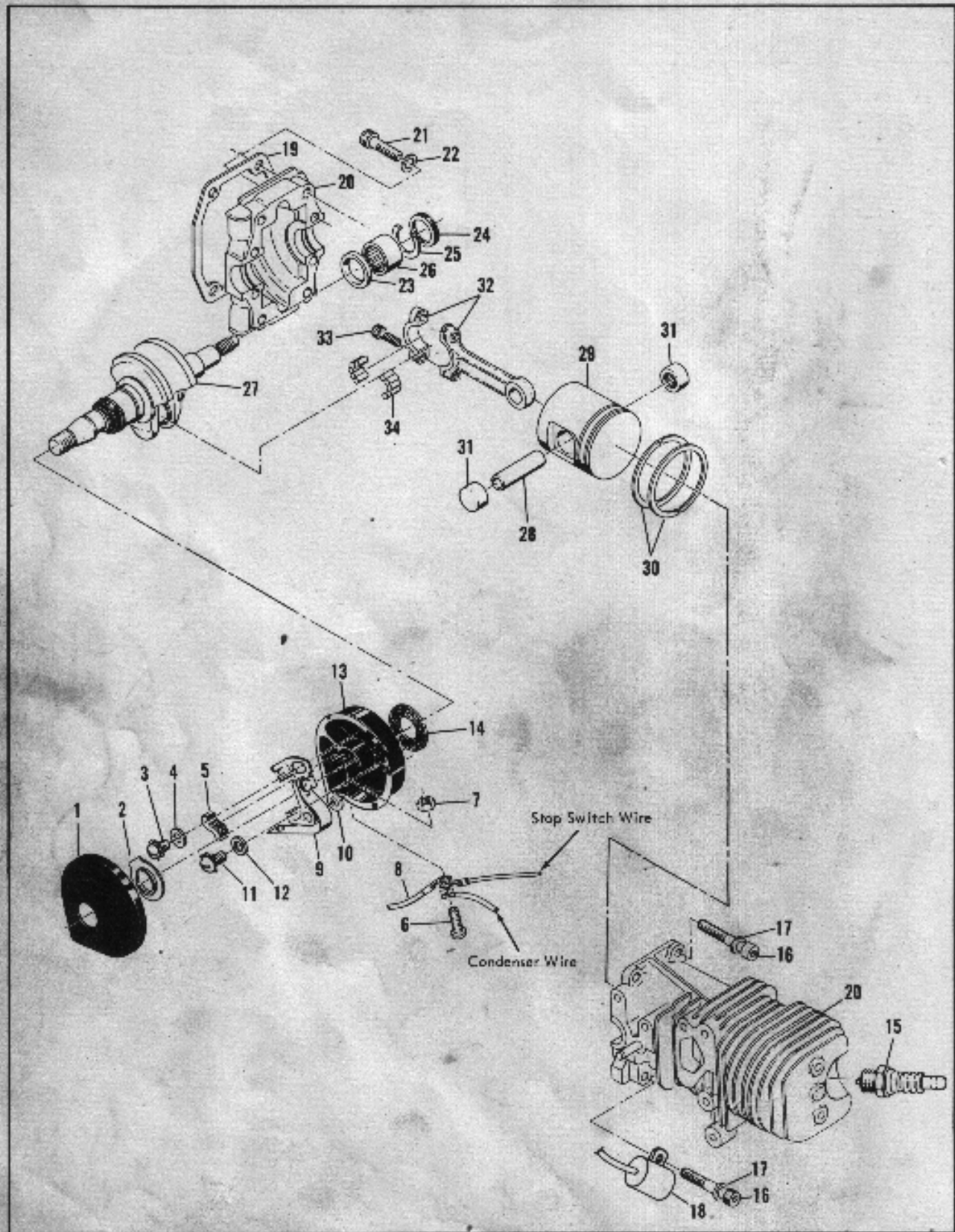


Figure 4. Powerhead Assembly

FIGURE 4. POWERHEAD ASSEMBLY

Item No.	Part Number	Description	Units Per Assy
1	67841	Cover - Breaker box	1
2	69323	Seal - Outer	1
3	110597	Screw - Pan hd 8-32 x 1/2 (SEMS)	1
4	69322	Washer - #8	1
5	54184	Wiper	1
6	110364	Screw - Pan hd 6-32 x 5/8	1
7	100035	Nut - Hex 6-32	1
8	69344	Wire Assy - Primary	1
9	66885	Breaker Assy	1
10	68630	Washer - Breaker	1
11	105248	Screw - Rd hd 8-32 x 5/8 (SEMS)	1
12	100080	Washer - #8	1
13	67840	Box - Breaker	1
14	68525	Seal - Breaker box	1
15	63097	Spark Plug	1
16	110523	Screw - Skt hd 8-32 x 1-1/4	4

Item No.	Part Number	Description	Units Per Assy
17	110613	Washer - #8	4
18	61650	Condenser	1
19	-83088	Gasket - Oil tank	1
20	-83454	Crankcase Assy	1
21	110522	Screw - Skt hd 8-32 x 7/8	4
22	110613	Washer - #8	4
23	68513	Plate - Thrust	2
24	67175	Seal - Oil	2
25	110547	Ring - Retaining	2
26	66854	Bearing - Crankshaft	2
27	68854	Crankshaft	1
28	66867	Pin - Piston	1
29	68098	Piston Assy	1
30	68096	. Ring Set - Piston	1
31	110538	. Bearing - Needle	2
32	68097	Rod Assy - Connecting	1
33	66853	. Screw - 6-40 x 1/2	2
34	68095	. Roller - Needle Set (20)	1

[Order McCulloch Power Mac 6 parts on eBay](#)

Power Mac 6

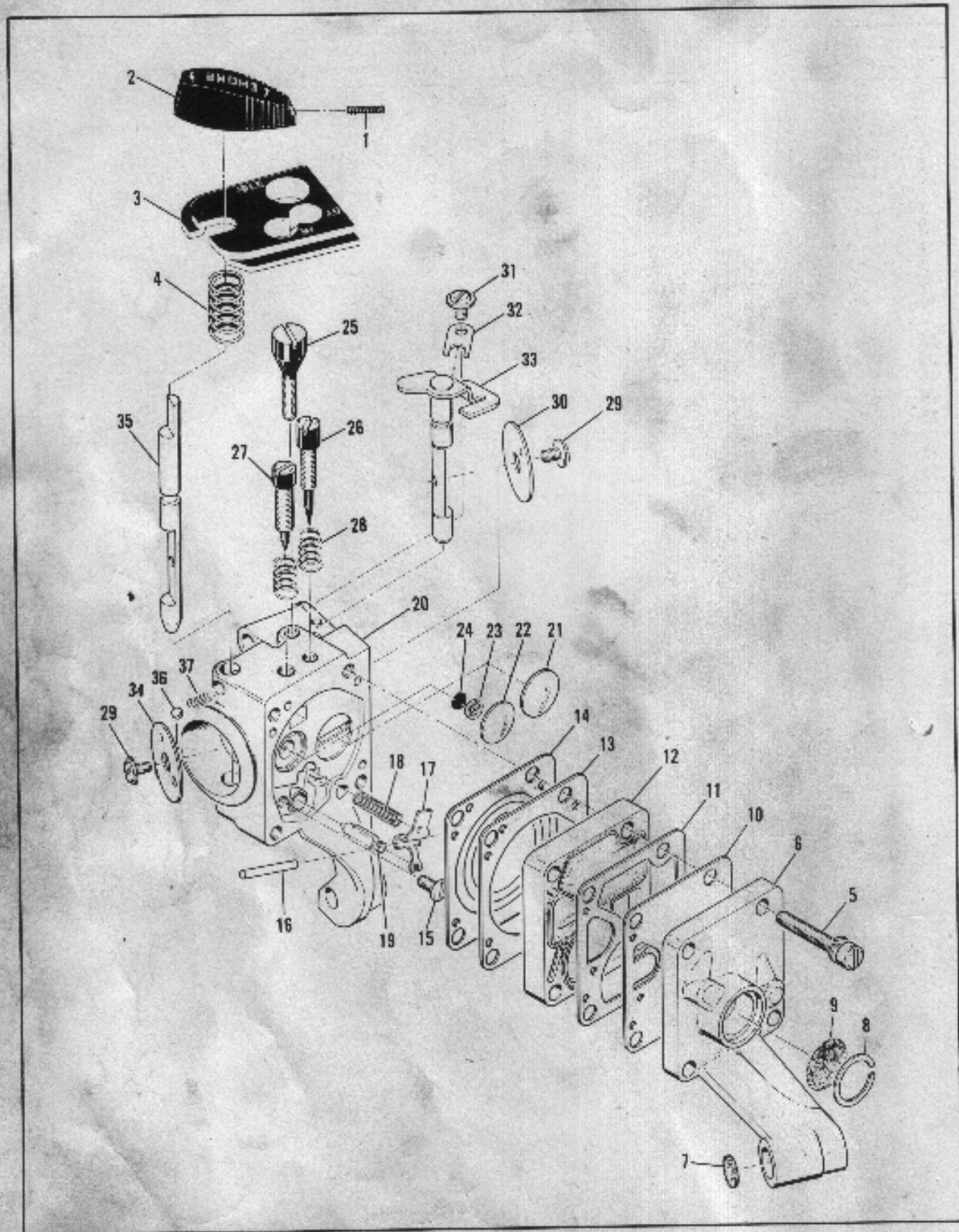


Figure 2. Carburetor Assembly

FIGURE 5. CARBURETOR

Item No.	Part Number	Description	Units Per Assy
1	110554	Screw - Set 4-40 x 1/2	1
2	68659	Knob - Choke	1
3	68814	Plate - Carburetor adj. cover	1
4	11086	Spring - Plate	1
	-83148	Carburetor Assy	1
5	* 68564	. Screw Assy - Body	4
6	68879	. Cover Assy - Pump	1
7	* 68570	. . Screen - Inlet	1
8	68883	. . Retainer - Vent screen	1
9	* 68571	. . Screen - Vent	1
10	* 68563	. Diaphragm - Pump	1
11	68561	. Gasket - Diaphragm	1
12	68880	. Body - Fuel pump	1
13	68881	. Gasket - Diaphragm	1
14	* 68562	. Diaphragm - Carburetor	1
15	* 67500	. Screw - Lever pin	1
16	* 67508	. Pin - Lever	1
17	*-83756**	. Lever - Inlet control	1
18	* 68567	. Spring - Lever	1
19	*-83753**	. Needle - Fuel inlet	1

Item No.	Part Number	Description	Units Per Assy
20	-83751	. Body Assy - Carburetor	1
21	* 68560	. . Plug- 1/2	1
22	* 68559	. . Plug- 7/16	1
23	* 69203	. . Seal Assy	1
24	* 69204	. . Valve	1
25	* 68566	. Screw - Idle speed	1
26	* 68568	. Needle - Idle	1
27	* 68569	. Needle - High speed	1
28	* 67502	. Spring - Needle	2
29	*-83755	. Screw - Plate	3
30	68553	. Plate - Throttle shaft	1
31	*-70798	. Screw - Clip	1
32	* 68554	. Clip - Throttle shaft	1
33	68552	. Throttle Shaft Assy	1
34	68556	. Plate - Choke shaft	1
35	68555	. Choke Shaft	1
36	* 100302	. Ball - Choke friction	1
37	* 67504	. Spring - Choke friction	1
	* 68882	Gasket Set	
	-83757	Repair Kit	

* In Repair Kit, P/N 83757

** Manual oiler models (Model 600085) below serial number 16985 are equipped with Inlet Control Lever, P/N 68572, and Fuel Inlet Needle, P/N 68557. Old and new levers and the old and new needles are not individually interchangeable. For replacement of either lever or needle, order mating parts only.

[Order McCulloch Power Mac 6 parts on eBay](#)

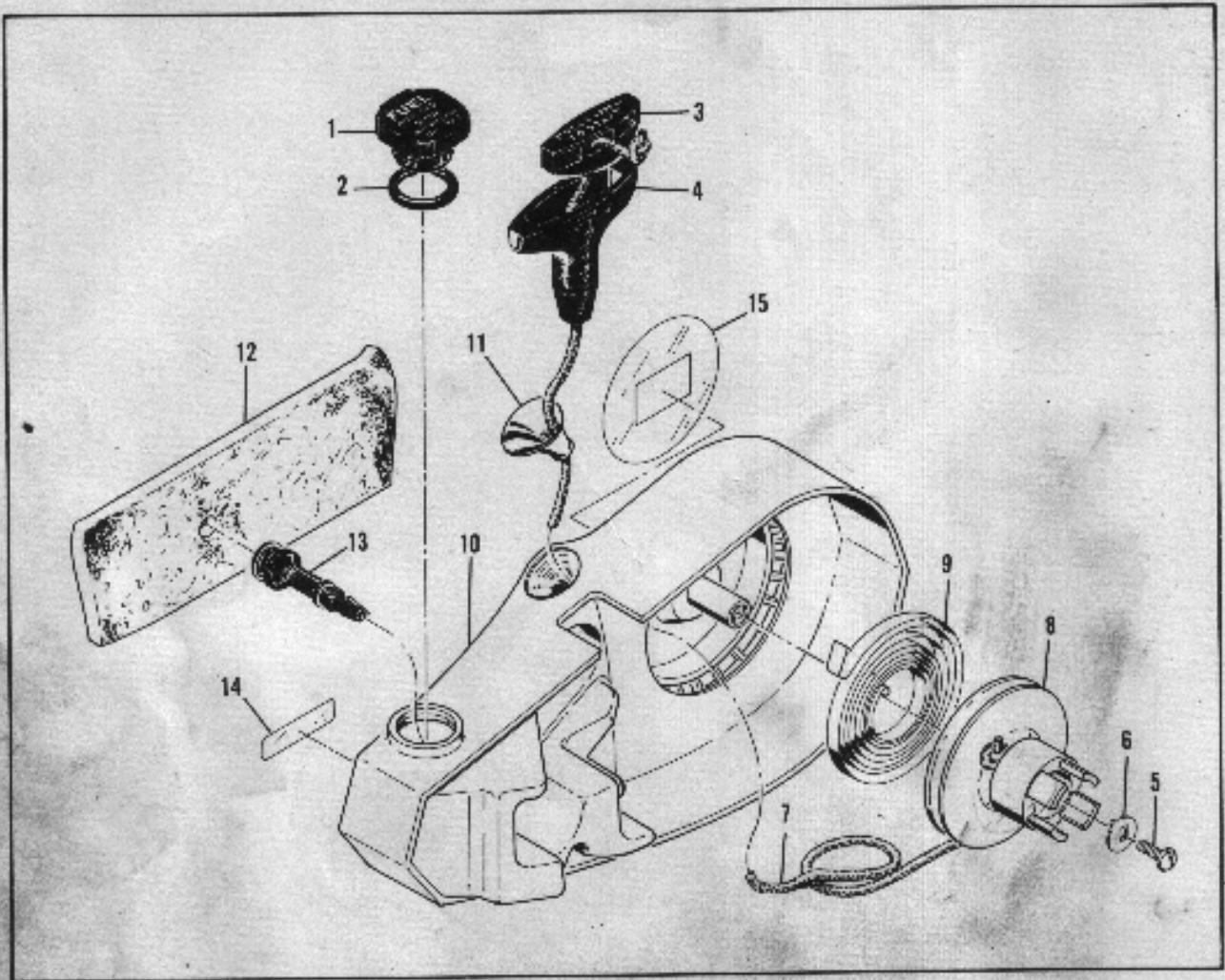


Figure 6. Fan Housing and Starter Assembly

FIGURE 6. FAN HOUSING AND STARTER ASSEMBLY

Item No.	Part Number	Description	Units Per Assy
1	68813	Cap Assy - Fuel	1
2	101148	. "O" Ring	1
	-83167	Fan Housing & Starter Assy	1
3	68810	. Inaert - Rope	1
4	67158	. Handle - Starter	1
5	105248	. Screw - Rd hd 8-32 x 5/8 (SEMS)	1
6	68497	. Washer - Tang	1
7	-83203	. Rope	1

Item No.	Part Number	Description	Units Per Assy
8	-83080	. Drum - Starter	1
9	-83078	. Spring - Rewind	1
10	-83201	. Housing Assy	1
11	67571	. . Guide - Rope	1
12	67582	. . Felt - Fuel	1
13	67581	. . Fitting - Fuel	1
14	69013	Nameplate	1
15	69014	Emblem	1

[Order McCulloch Power Mac 6 parts on eBay](#)

ACCESSORIES

Part Number	Description
-83196	Owner's Manual
68648	Scrench
66924	Bar - 12 inch
67746M	Chain Assembly - 12 inch bar
68302	Bar - 16 inch
67748M	Chain Assembly - 16 inch bar
68349	Kit - Chain repair
67750	Pkg - File guide
67680	Pkg - File depth gauge (.025 - .030)

Part Number	Description
67688	Pkg - File depth gauge (.015 - .020)
68916	Kit - Pressure test
68915	Kit - Piston tool
69162	Baffle - Spark Arrester (Alternate)
-83124	Guard - Bar
-83323	Manual - Shop