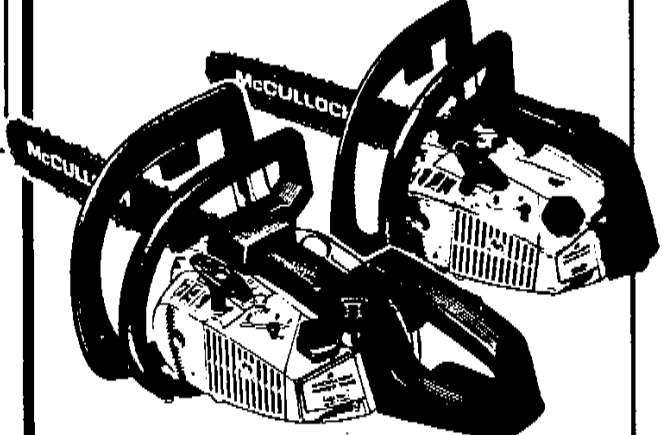


# ILLUSTRATED PARTS LIST

PM 310		PM 320		PM 330	
MODELS	SERIAL NUMBER PREFIX	MODELS	SERIAL NUMBER PREFIX	MODELS	SERIAL NUMBER PREFIX
600042A	14-	600021A	14-	600043A	14-
600042B	14-	600021B	14-	600043B	14-
600042D	14-	600021D	14-	600043E	14-
600042E	14-	600021E	14-	600043G	14-
600042F	14-	600021G	14-	600043J	14-
600042G	14-	600021H	14-	600043N	14-
600042H	14-	600021J	14-	600043P	14-
600042J	14-	600021K	14-	600043U	14-
600042K	14-	600021M	14-		
600042M	14-	600021N	14-		
600042P	14-	600021P	14-		
600042U	14-				

(300)

## POWER MAC 310, 320, 330 CHAIN SAW



McCulloch chain saws are identified by a model number (in this instance, 600021) followed by a suffix letter (A, B, C, etc.) stamped on the identification plate attached to the saw. Suffix letters denote variations in parts or assemblies in the manufacture of the saw.

Part numbers listed in this I.P.L. which have a suffix letter or letters following the description, indicate the part is used only on the model(s) identified by the letter or letters.

Part numbers and descriptions without suffix letter or letters apply to all versions of the chain saw model.

Part numbers which have one or more dots (.) preceding their descriptions may be ordered individually, but they are also included in the kit or assembly whose description begins directly above the dot(s).

Part numbers in this IPL which were not in the previous IPL covering these saws, are indicated by a dash (-) preceding the new part number.

The policy of McCulloch Corporation is one of continual improvement in design, manufacturing and engineering advancement wherever possible to assure still finer two-cycle power tools. Hence, specifications, equipment, colors, design and manufacturer's suggested list prices are subject to change without notice and McCulloch Corporation reserves the right to make such changes without prior notification or obligation to backfit or supply backfit components for units previously shipped from the factory.

(each Super Mac) January 1984

- CONTENTS -

	Page
Figure 1. General . . . . .	2
Figure 2. CHAIN BRAKE Assembly . . . . .	4
Figure 3. Carburetor Assembly . . . . .	5
Figure 4. Carburetor Assembly . . . . .	6
Figure 5. Powerhead Assembly . . . . .	8
Figure 6. Handle Assemblies . . . . .	10
Service Specifications . . . . .	7
Bar & Chain Combinations . . . . .	7
Tools and Accessories . . . . .	7



© U.S.A. - McCulloch Corporation, 1984

Printed in U.S.A.

95871-R2-E

(This IPL covers PM 300 Series units with Serial Number Prefix 14- ONLY.)

**POWER MAC 310,  
PM 320, PM 330**

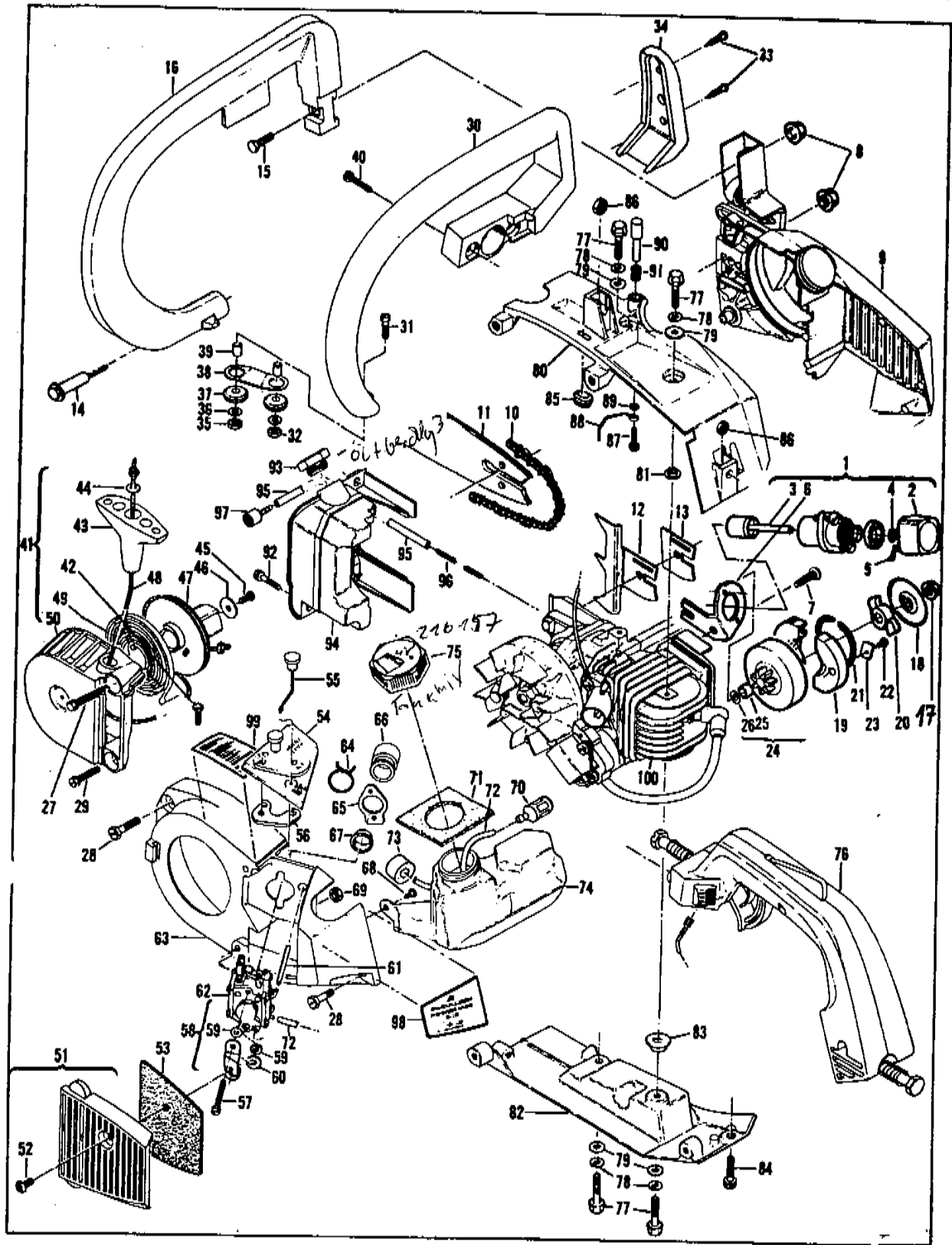


Figure 1. General

Figure 1. General

ITEM NO.	PART NUMBER	DESCRIPTION	UNITS PER ASY.
1	-215662	① Kit - Grinder Asy-AUTO-SHARP	1
2	215447	① . Knob	1
3	-216707	① . Wheel Asy - Grinding	1
4	-216134	① . . Washer	1
5	-216133	① . . Pin - Cotter	1
6	215208	① . Bracket - AUTO-SHARP	1
7	120025	① Screw - Pan hd M5 x 10	2
8	120029	Nut - Hx Flg M6 x 1.0	2
9	-	CHAIN BRAKE Assembly (Figure 2)	1
10	-	Chain (see page 7)	1
11	-	Bar (see page 7)	1
12	214207	② Spike	1
13	93148	① Spacer - Bar Pad	1
14	-215695	Screw - Hx hd M5 x 50 ST(SEMS)	1
15	120028	Screw - Hx hd M6 x 20	1
16	93021A	Lever - Wraparound	1
17	94244	Nut - Clutch	1
18	94243	Plate - Dust	1
19	213278	Kit - Clutch	1
20	94242	. Rotor	1
21	93608	. Spring Assembly - Clutch	1
22	110957	. Rivet - Fl 1/8 x .547	2
23	85064	. Plate - Clutch Shoe	2
24	95646	Drum/Sprocket/Bearing Asy	1
25	91222	. Bearing	1
26	215259	. Washer - Sprocket	1
27	120096	Screw - WH M5 x 55 ST	1
28	120095	Screw - WH M5 x 20 ST	2
29	120098	Screw - WH M5 x 18	1
30	-216816	Kit - Frame	1
31	-216064	. Screw - M5 T-Head	1
32	-216585	. Nut - Hx M5 Lock	1
31	-216064	③ . Screw - M5 T-Head	1
33	111011	④ . Screw - Pn hd 10-16 x 7/8	2
34	95141	④ . Weight - Frame	1
35	-216585	Nut - Hx M5 Lock	1
36	120045	Washer - M5	2
37	110989	Grommet	2
38	93152	Link	1
39	93057	Spacer - Mount	2
40	120036	Screw - Pn M4 x 25 (SEMS)	2
41	-216491	Kit - Starter Assembly	1
42	-216064	. Screw - M5 T-Head	1
43	91255	. Kit - Starter Handle	1
44	105490	. . Washer - Starter Handle	1
45	110041	. Screw - Pn hd 8-32 x .5	1
46	68497	. Washer	1
47	213261	. Drum/Rope Assembly	1
48	83203	. . Rope - Starter	1
49	83078	. Spring - Starter Rewind	1
50	-216494	. Housing Assembly - Starter	1
51	93527	Cover Assembly - Air Filter	1

ITEM NO.	PART NUMBER	DESCRIPTION	UNITS PER ASY.
52	93626	. Screw - Pan hd M5 x .80	1
53	214225	Filter - Air	1
54	94608	Cover Assembly - Air Box	1
55	214316	. Rod Assembly - Choke	1
56	94721	. Seal - Air	1
57	120049	Screw - Pan hd M5 x 40	2
58	94905	Kit - Choke Plate & Bracket	1
59	-	. Washer - Flat	2
60	-	. Washer - Wavy	1
61	93151	Hose - Pulse	1
62	-	Carburetor (Figure 3, 4)	1
63	93101A	Housing - Fan	1
64	94302	Clip - Spring	1
65	92747	Flange - Carburetor Mounting	1
66	213211	Kit - Carburetor Boot	1
67	95656	. Eyelet	1
68	111002	Screw - Pan hd 10-16 x .5	1
69	94501	Nut - Hx M5 x 0.8 Thin	1
70	93720	Pickup - Fuel	1
71	94491	Seal - Fuel Vent	1
72	93997	Hose - Fuel	1
73	90869	Filter - Vent	1
74	95301	Kit - Fuel Tank	1
75	95300	. Cap Assembly - Fuel	1
76	-	Handle Assemblies (Figure 6)	1
77	213166	Screw - Hx Wsh M6 x 16	4
78	102523	Washer - Lock	4
79	105043	Washer - 1/4 Plain	4
80	214152	Kit - Top Shroud	1
81	214350	. Insulator	1
82	214154	Kit - Bottom Shroud	1
83	214350	. Insulator	1
84	120095	Screw - WH M5 x 20 ST	1
85	94192	⑤ Grommet	1
86	120034	Nut - Hx M6 x 1.0	2
87	110999	Screw - Hx hd 6-20 x 16 WH	1
88	94540	Rod - Oil	1
89	100001	Washer - Plain	1
90	93304A	Knob - Oil	1
91	93634A	Spring - Compression	1
92	120095	Screw - WH M5 x 20 ST	2
93	<del>90074</del>	Cap - Oil <i>216095</i>	1
94	-216696	Tank Assembly - Oil	1
95	94405	. Hose - Oil Pickup	1
96	93998	. Spring - Oil Hose	1
97	92465	. Pickup - Oil	1
98	93856	Plate - Name (PM 310)	1
98	93854	Plate - Name (PM 320)	1
98	93858	Plate - Name (PM 330)	1
99	95206	Plate - Instruction	1
100	-	Powerhead Assembly (Figure 5)	1

- ① Used on PM 320 models
- ② Used on PM 320, 330, and on PM 310 models with suffix letter A, D, G, H, J, K, M, N and P
- ③ Used on PM 310 models with suffix letters D, E, F, G, H, K, M and U.
- ④ Used on PM 330 models with suffix letter J
- ⑤ Used on PM 310 and 320 models.

**POWER MAC 310,  
PM 320, PM 330**

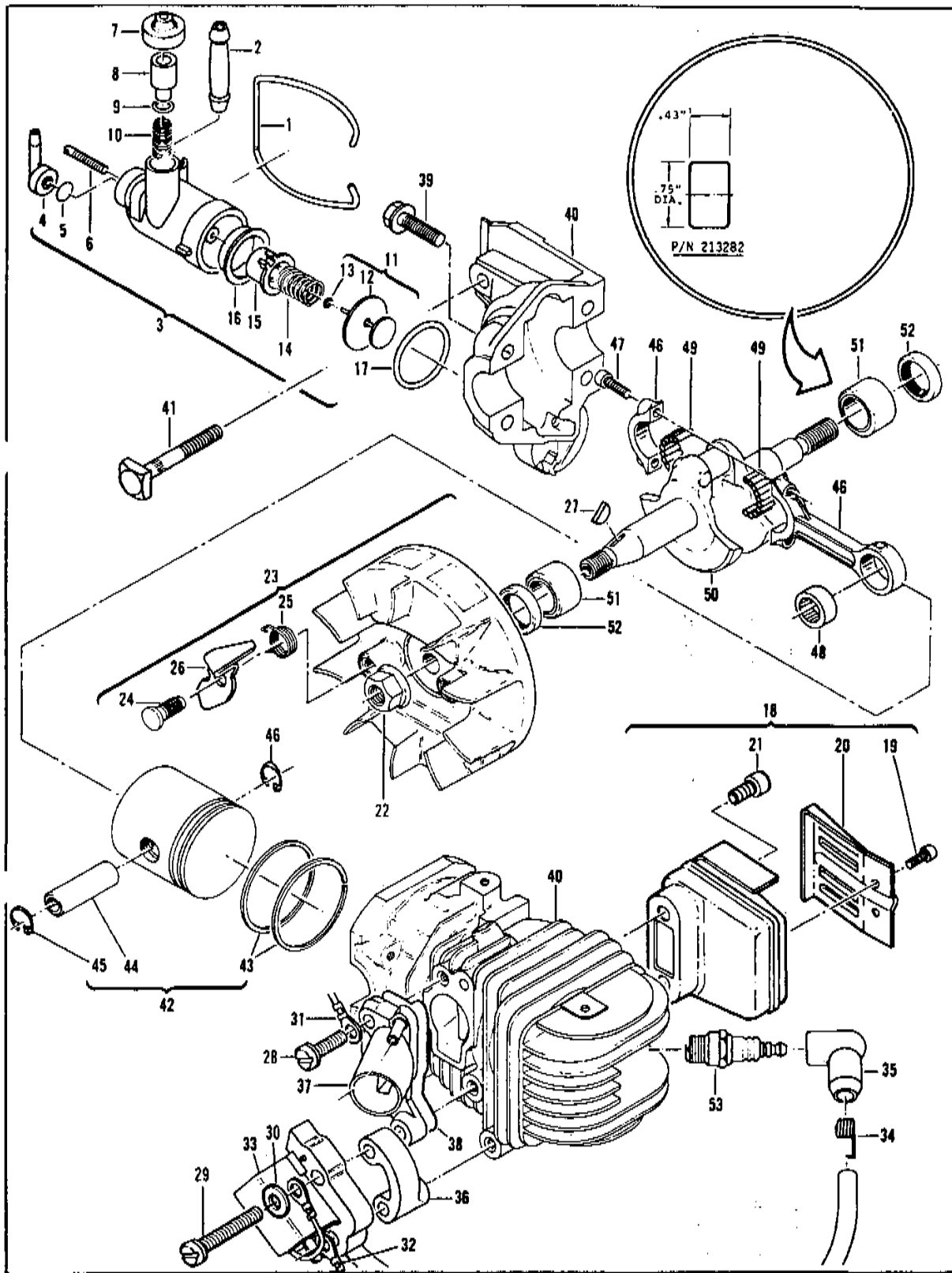


Figure 5. Powerhead Assembly

Figure 5. Powerhead Assembly

POWER MAC 310  
PM 320, PM 330

ITEM NO.	PART NUMBER	DESCRIPTION	UNITS PER ASY.
1	93150	Ball	1
2	-217168	Connector - Outlet	1
3	-216424	Pump Assembly - Chain Oiler	1
4	-215196	. Connector - Hose	1
5	94115	. Valve - Oiler	1
6	93639	. Screw - 6-40 x .800	1
7	-215151	. Cap - Oil Pump	1
8	93301	. Plunger - Oil Pump	1
9	105614	. "O" Ring - .239 x .070	1
10	93632	. Spring	1
11	216426 ①	. Piston Assembly - Oiler	1
12	- - ①	. Ring - Oil Pump Piston	1
13	- - ①	. "O" Ring - .114 x .070	1
14	83891	. Spring - Return	1
15	- - ①	. Sleeve - Oil Pump	1
16	- - ①	. Eyelet	1
17	110653	"O" Ring	1
18	215411	Muffler/Deflector Assembly	1
19	110681	. Screw - Skt hd 10-24 x 1/4	2
20	92961	. Deflector - Exhaust	1
21	215394	. Screw - Special M5	2
22	-213169	Nut - Hx Flg M8 x 1.25	1
23	-94737	Flywheel/Pawl Assembly	1
24	-216984	. Pin - Starter Pawl	2
25	-216982	. Spring - Pawl	2
26	-216983	. Pawl - Starter	2
27	102164	Key - Woodruff	1
28	120027	Screw - Pan hd M5 x 18 (SEMS)	1
29	120112	Screw - Skt hd M5 x 40	2

ITEM NO.	PART NUMBER	DESCRIPTION	UNITS PER ASY.
30	24236	Washer - Special	1
31	93514 ②	Wire Assembly - Ground	1
32	93795 ②	Wire Assembly - Ground	1
33	-216599	Electronic Ignition Assembly	1
34	102556	. Connector - Spark Plug	1
35	95266	. Boot - Spark Plug	1
36	214356	Spacer - Coil	1
37	-215601	Manifold - Carburetor	1
38	-92778	Gasket - Insulator	1
39	120097	Screw - Hx W/H M5 x 25	4
40	-215943	Cylinder/Crankcase Assembly	1
41	92777	. Bolt - Bar Mounting	1
42	94660	Piston Assembly	1
43	94136	. Ring Set	1
44	92836	. Pin - Piston	1
45	111026	. Ring - Snap	2
46	94135	Connecting Rod Assembly	1
47	94654	. Screw - Connecting Rod	2
48	110984	. Bearing - Needle	1
49	68095	. Roller - Needle (set of 20)	1
50	92750	Crankshaft	1
51	213282 ④	Bearing - Crankshaft	2
52	83859	Seal - Crankshaft Oil	2
53	235593	. Spark Plug (B, E)	1

① Contained in Oil Pump Repair Kit, P/N 216426.

② Used on PM 310 and PM 320 models.

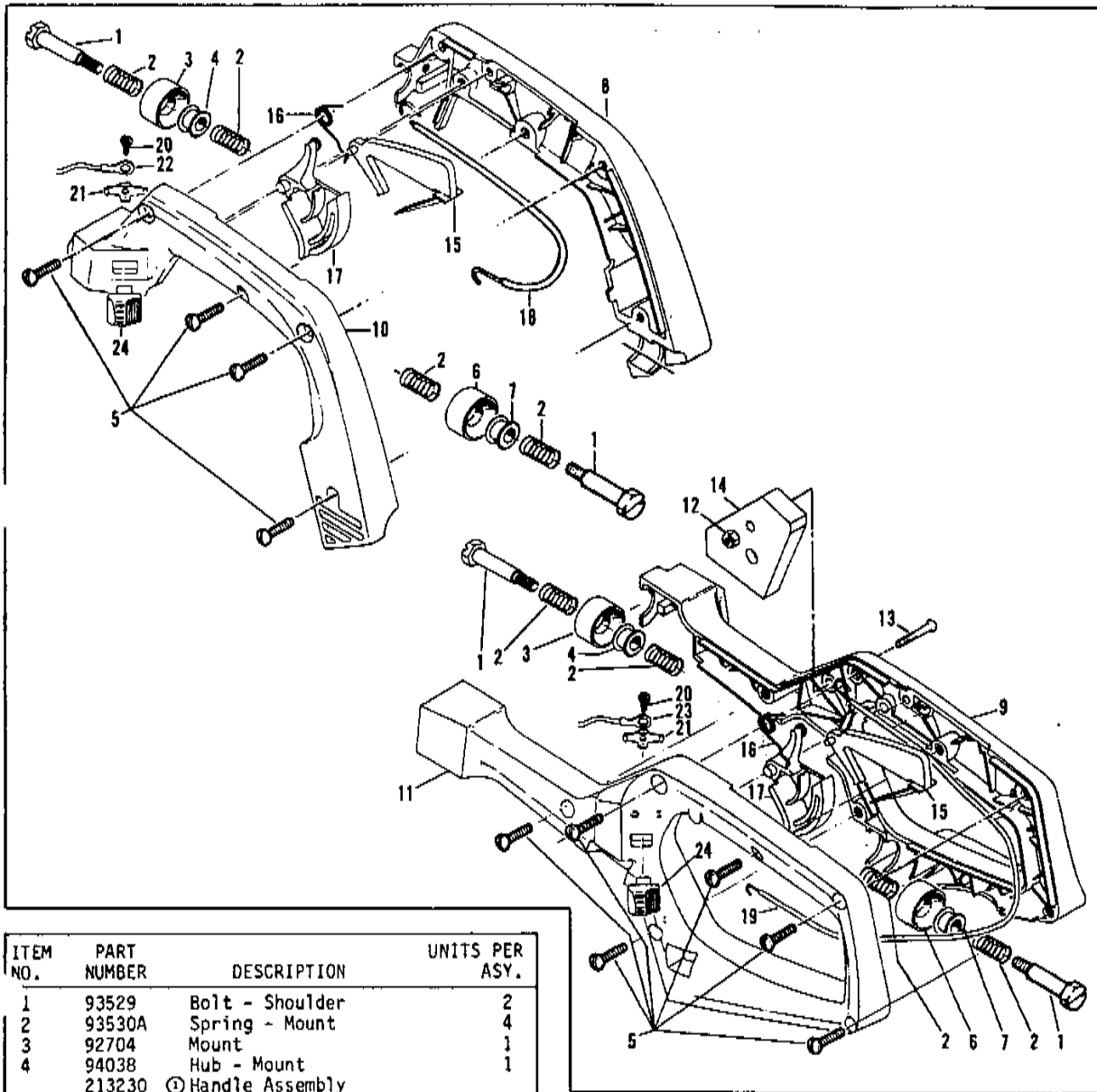
③ Used on PM 330 models.

④ One of two types of crankshaft bearing used. Replacement crankshaft bearing MUST be the same as originally used on unit. Identify parts before ordering. All service replacement cylinders will be manufactured to use ONLY Crankshaft Bearing, P/N 213282.

\*Flywheel nut torque should be 190 to 200 pound x inches (21.5 to 22.6 N.m.)

**POWER MAC 310,  
PM 320, PM 330**

**Figure 6. Handle Assemblies**



ITEM NO.	PART NUMBER	DESCRIPTION	UNITS PER ASY.
1	93529	Bolt - Shoulder	2
2	93530A	Spring - Mount	4
3	92704	Mount	1
4	94038	Hub - Mount	1
	213230	① Handle Assembly	
	213231	② Handle Assembly	
	213235	③ Handle Assembly	
5	111032	. Screw - Pan hd 10-16 x 5/8	A/R*
6	92704	. Mount	1
7	94038	. Hub - Mount	1
8	213229	① Handle - Right half	1
9	213224	③ Handle - Long right	1
10	213228	① Handle - Left half	1
11	213226	③ Handle - Long left	1
12	101326	③ Nut - Hx lock 10-24	1
13	104400	③ Screw - Pan hd 10-24 x 1-1/4	1
14	95042	③ Weight - Handle	1
15	93310	. Trigger - Safety	1

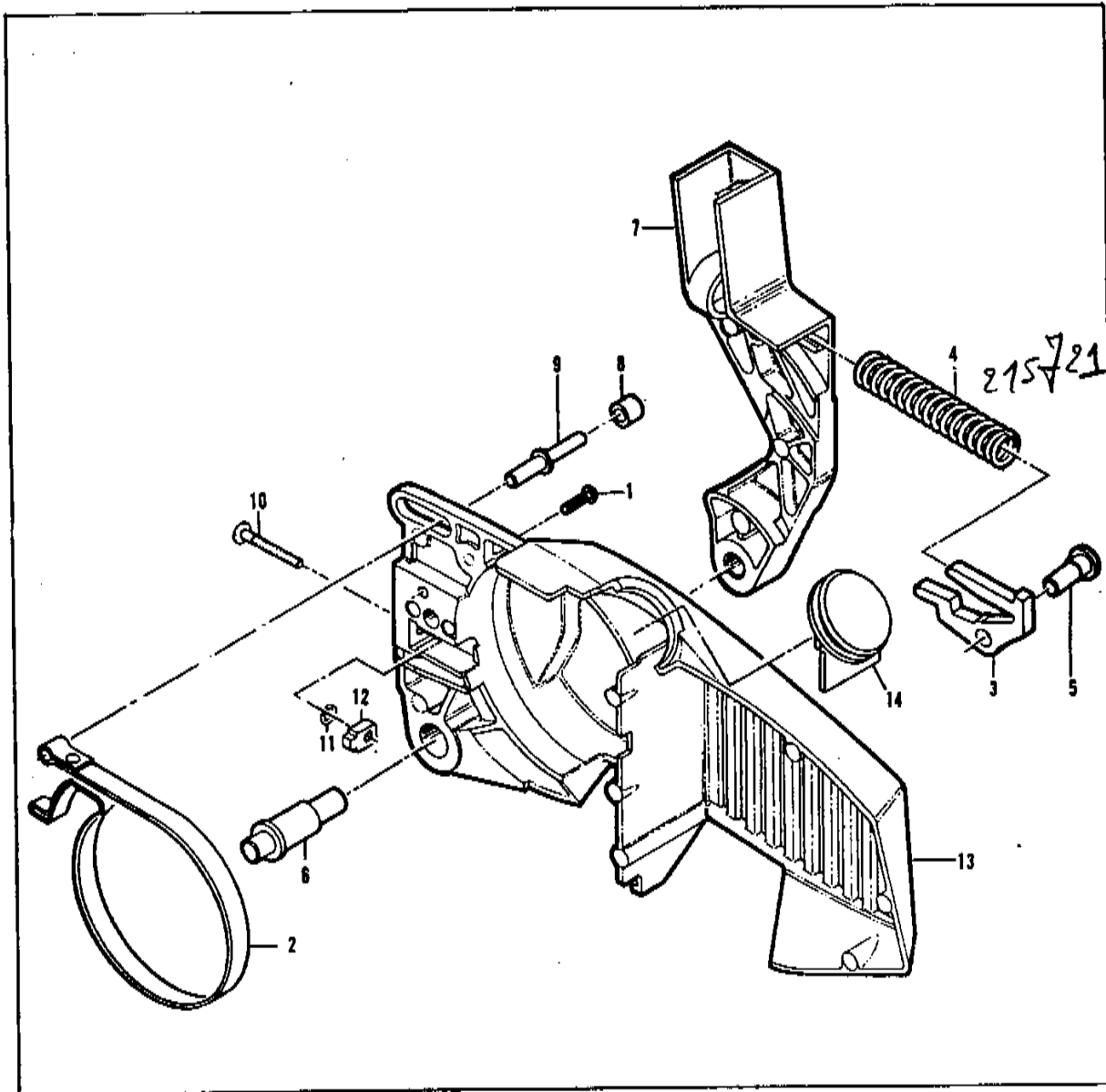
ITEM NO.	PART NUMBER	DESCRIPTION	UNITS PER ASY.
16	93515	. Spring - Trigger	1
17	213232	. Trigger - Throttle	1
18	213234	① Wire Assembly - Throttle	1
19	213233	② Wire Assembly - Throttle	1
20	110706	. Screw - Pan hd 8-18 x 1/2	1
21	62451	. Contact - Ignition switch	1
22	93505A	. Wire - Stop switch (PM 310/320)	1
23	94039	. Wire - Stop switch (PM 330)	1
24	68846	. Button - Stop switch	1

- ① Used on PM 310 and PM 320 models.
- ② Used on PM 330 models.
- ③ Used on PM 330 models with suffix letter J.

\* Four used on Handle Assembly, P/N 213230.  
Six used on Handle Assemblies, P/N 213231 and P/N 213235.

OWER MAC-310,  
M 320, PM 330

Figure 2. CHAIN BRAKE Assembly



Item No.	Part Number	Description	Units Per Asy.
	216409	CHAIN BRAKE Assembly	1
1	111047	. Screw - F11 hd 8-32 x 5/8	1
2	94709	. Band - Brake	1
3	215758	. Kit - Latch	1
4	215721	. Spring - Compression	1
5	93602	. Pivot - Latch	1
6	92482	. Pivot - Lever	1
7	93159	. Lever - Actuating	1

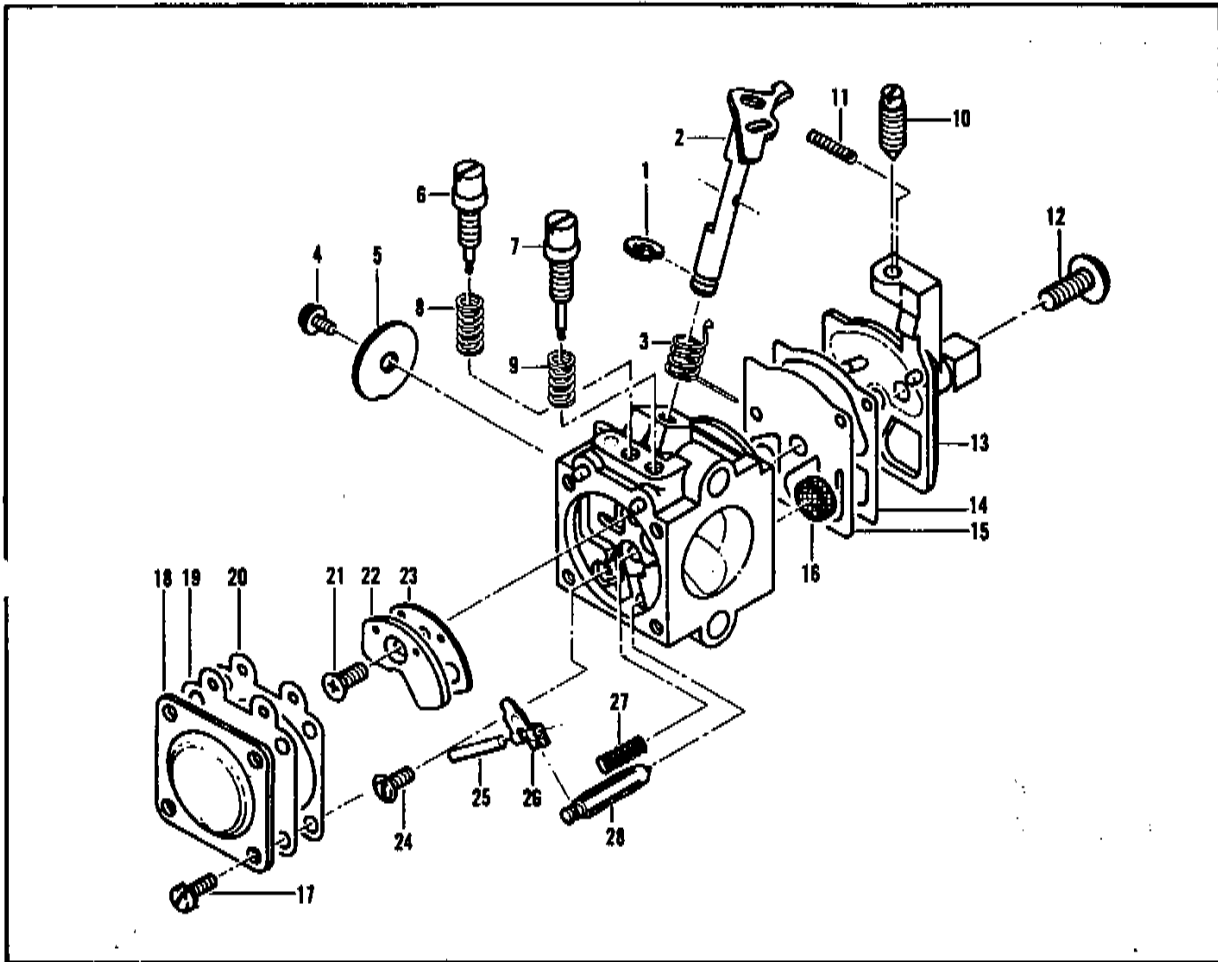
Item No.	Part Number	Description	Units Per Asy.
8	214368	. Bearing - Roller	1
9	213907	. Pin - Roller	1
10	90658	. Screw - Adjusting	1
11	110907	. Ring - Retaining	1
12	215721	. Nut - Bar Adjusting	1
13	215589 ①	. Housing - Brake	1
13	216436 ②	. Housing - Brake	1
14	93528A ③	. Cover - AUTO-SHARP	1

↘ 93528-01

- ① Used on models with Screw, P/N 111047.
- ② Used on models without Screw, P/N 111047.
- ③ Used on PM 310 and PM 330 models.

POWER MAC 310,  
PM 320, PM 330

Figure 4. Carburetor Assembly



ITEM NO.	PART NUMBER	DESCRIPTION	UNITS PER ASY.
	94496A	① Carburetor Asy-Walbro (WA-52)	1
1	94749	. Ring-Shaft retainer	1
2	94752	. Shaft Asy - Throttle	1
3	*94765	. Spring-Throttle return	1
4	*83755	. Screw - Valve	1
5	94753	. Valve - Throttle	1
6	*94766	. Needle - Idle adjust	1
7	*94767	. Needle - Hi speed	1
8	*94763	. Spring - Idle needle	1
9	*67502	. Spring-Hi speed needle	1
10	94762	. Screw - Idle adjust	1
11	*67504	. Spring - Friction	1
12	*94760	. Screw - Pump cover	1
13	94751	. Cover - Pump	1

ITEM NO.	PART NUMBER	DESCRIPTION	UNITS PER ASY.
14	**94754	. Gasket - Pump	1
15	**94758	. Diaphragm - Pump	1
16	*94769	. Screen - Inlet	1
17	*80529	. Screw-Diaphragm cover	4
18	94750	. Cover-Metering diaphragm	1
19	**94759	. Diaphragm Asy-Metering	1
20	**94755	. Gasket - Metering diaphragm	1
21	*94761	. Screw-Circuit plate	1
22	*94771	. Plate - circuit	1
23	**94756	. Gasket - circuit	1
24	*67500	. Screw-Metering lever	1
25	*94770	. Pin-Metering lever	1
26	*94772	. Lever - Metering	1
27	*94764	. Spring-Metering lever	1
28	*67491	. Valve - Inlet needle	1
	*94775	Kit-Gasket/Diaphragm	

① One of two carburetors used. Identify carburetor before ordering parts.

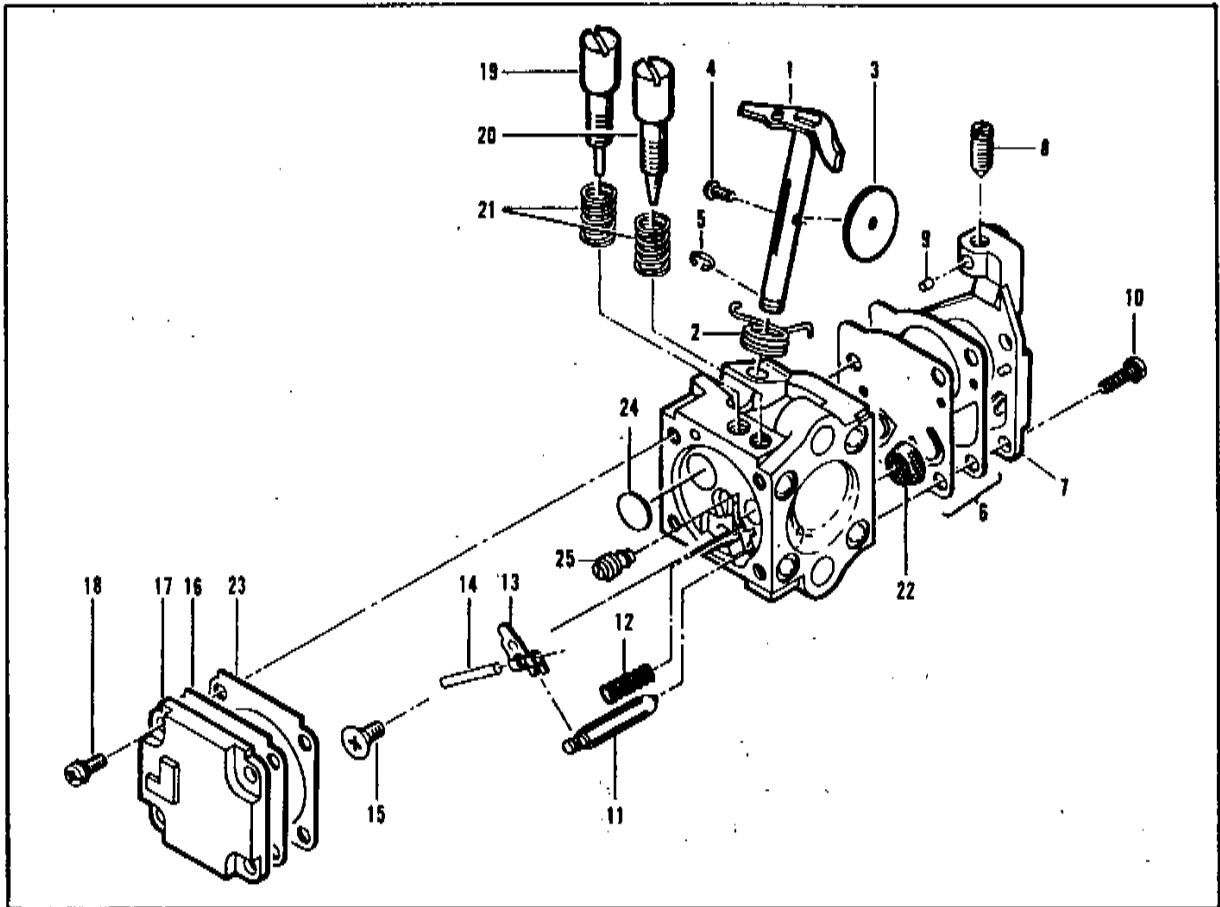
\* Contained in Repair Kit, P/N 94774.

\*\* Contained in Gasket/Diaphragm Kit, P/N 94775.

*= 218950*



Figure 3. Carburetor Assembly.



ITEM NO.	PART NUMBER	DESCRIPTION	UNITS PER ASY.
	94496	Carburetor Assembly (Zama)	1
1	--	. Shaft Asy - Throttle	1
2	--	. Spring - Throttle Return	1
3	--	. Plate - Throttle	1
4	--	. Screw - Plate (M3)*	1
5	--	. "E" Ring	1
6	--	①②. Kit - diaphragm & Gaskets	1
7	--	. Cover Asy - Pump	1
8	--	. Screw - Idle Speed	1
9	--	. Insert - Friction	1
10	--	. Screw - Pump Cover (M4)*	4
11	--	①. Needle - Inlet	1
12	--	①. Spring - Lever	1

ITEM NO.	PART NUMBER	DESCRIPTION	UNITS PER ASY.
13	--	①. Lever - Inlet Needle	1
14	--	①. Pin - Lever	1
15	--	①. Screw - Lever Pin (M3)*	1
16	--	②①. Diaphragm Asy - Metering	1
17	--	. Cover - Diaphragm	1
18	--	. Screw - Diaphragm Cover (M3)*	4
19	--	③. Screw - Idle Adjust	1
20	--	③. Screw - Main Adjust	1
21	--	③. Spring - Needle	2
22	--	①. Screen - Filter	1
23	--	①. Gasket - Metering Diaphragm	1
24	--	①. Welch Plug	1
25	--	①. Orifice - Main Fuel	1

\* The "M" denotes metric screw size.

① Contained in Repair Kit, P/N 217081. - 300 460

② Contained in Gasket/Diaphragm Kit, P/N 217089. = 300 467

③ Contained in Needle Kit, P/N 216804.

**Bar & Chain Combinations**

PART NUMBER	DESCRIPTION	CHAIN SAW MODEL		
		PM 310	PM 320	PM 330
214919N	Chain - MP 370GL	A, B, E, J, N		E, J, N
214235	Bar - 14" Mini Pro	A, B, E, J, N	A, B, J, P	E, J, N
214656N	Chain - AS 370G		A, B, J, P	
214230N	Chain - AS 370G		D, F, U	
214236	Bar - 16" Mini Pro	D, H, M, U	D, F, U	A, B, P, U
214925N	Chain - MP 370GL	D, H, M, U		A, B, P, U

**Tools and Accessories**

PART NUMBER	DESCRIPTION
214207	Spike
94972	Scrench
93797	Wrench - Screwdriver
214194	Lubri-Gun
91226	Holder - Flywheel
93095	Bracket - AUTO-SHARP
95168	Grinder Assembly - AUTO-SHARP
94365	Kit - Carrying Case, 14" (PM 310, 320)
92977	Scabbard - 14"
94364	Kit - Carrying Case, 16" (PM 310/320)
214202	Scabbard - 16"
85702	Lubricant-Custom, 6 oz. can
85703	Lubricant-Custom, 6 oz. cans, 6-pack

PART NUMBER	DESCRIPTION
214212	Kit - Tool
95169	Kit - Spark Arrester Screen
94416	Adaptor - Intake (Cyl.)
94415	Adaptor - Intake (Air Box)
68917	Adaptor - Exhaust
85229	Kit - Pressure Test
-215432	Tool - Pressure Test
501334	Tester - Ignition
67537	Loctite
69794	Loctique
63094	Driver - Wrist Pin
110083	R.T.V. Sealant
110706	Tool-Handle/Throttle Trigger Screw

**Service Specifications**

Displacement . . . . .	35 cc (2.1 cu. in.)
Bore and Stroke . . . . .	38 mm x 30.5 mm (1.5 in. x 1.201 in.)
Bearings . . . . .	Main: Needle
Intake System . . . . .	3rd Port
Fuel Tank Capacity . . . . .	330 cc (11.2 oz.)
Chain Oiler Capacity . . . . .	100 cc (3.4 oz.)
Clutch Engaging Speed . . . . .	3800 R.P.M.
Idle Speed . . . . .	2700 to 2900 R.P.M.
Ignition . . . . .	Electronic
Carburetor . . . . .	Diaphragm Type, 2-needle Adjustable

Fuel Type . . . . .	Regular Grade Leaded
Fuel-Oil Mixture . . . . .	40:1 w/ McCulloch Oil
Filtering System, Fuel . . . . .	Enclosed Felt Fuel Filter
Filtering System, Air . . . . .	Felt Air Filter
Lamination Gap . . . . .	0.3 to 0.4 mm (.011 in. to .015 in.)
Timing . . . . .	26° B.T.D.C.
Piston Rings . . . . .	2 Cast Iron Compression Rings
Weight: PM 310 . . . . .	4.49 kg (9.9 lbs.)
PM 320 . . . . .	4.54 kg (10 lbs.)
PM 330 . . . . .	4.71 kg (10.4 lbs.)