

# ILLUSTRATED PARTS LIST

MODELS	SERIAL NUMBER PREFIX	MODELS	SERIAL NUMBER PREFIX
600093B	11-, 13-, 14-	600093H	14-
600093C	11-, 12-, 13-, 14-	600093J	14-
600093D	14--	600093K	13-, 14-
600093E	13-, 14-	600093L	14-
600093F	14-	600093M	14-
600093G	14-	600093P	11-, 13-, 14-
		600093U	11-, 13-, 14-

Mini-Mac 25 & 30 chain saws are identified by a model number (600093) followed by a suffix letter (B, C, D, E, F, G, H, J, K, L, M, P, or U) stamped on the identification plate attached to the saw. Suffix letters denote variations in parts or assemblies in the manufacture of the saw.

Part numbers listed in this IPL which have a suffix letter or letters following the description, indicate the part is used only on the model(s) identified by the letter or letters.

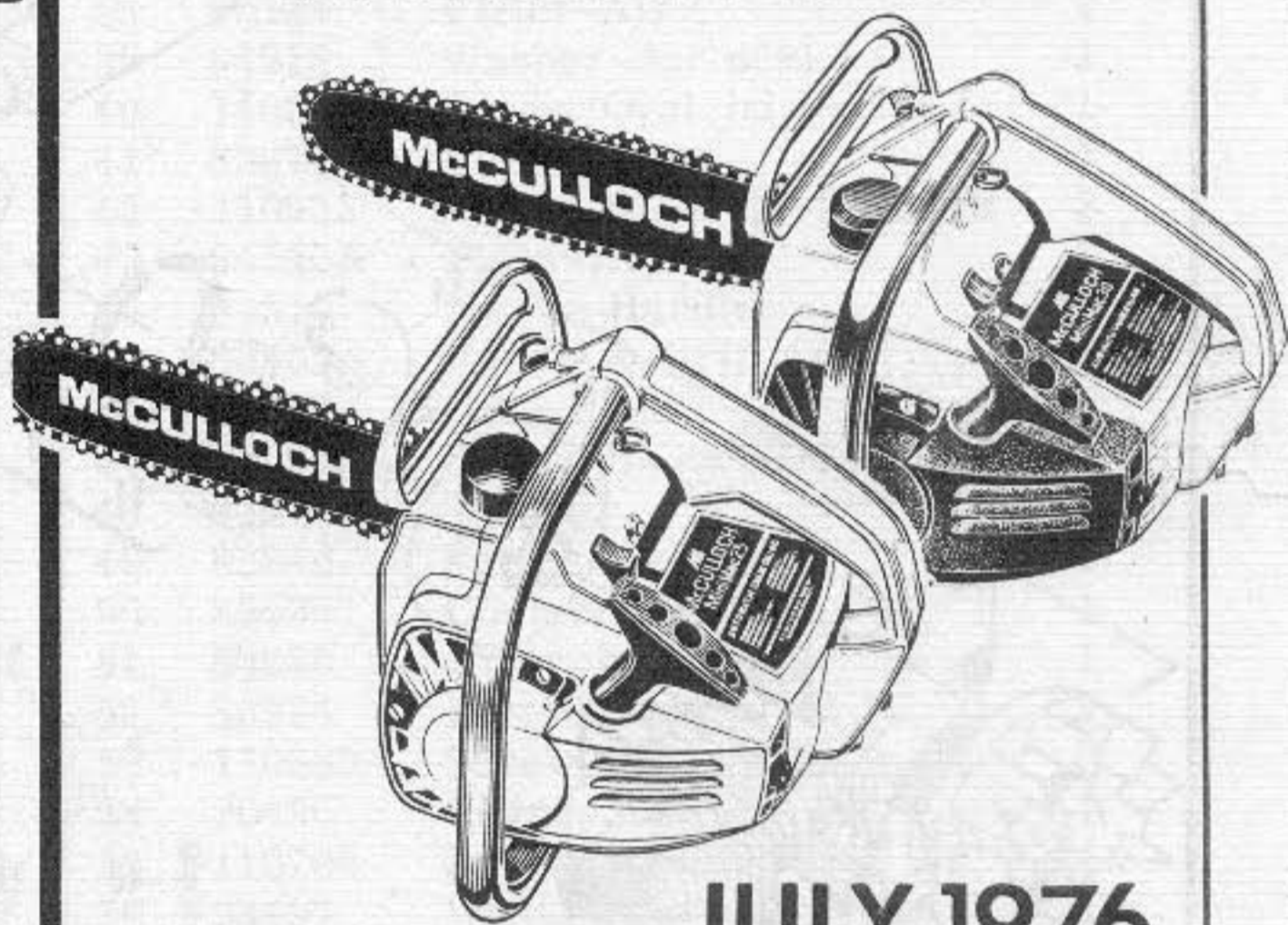
Part numbers and descriptions without suffix letter or letters apply to all models of the Mini-Mac 25 & 30 chain saws.

Part numbers which have one or more dots (.) preceding their description may be ordered individually but they are also included in the kit or assembly whose description begins directly above the dot(s).

Part numbers which have changed since the previous printing of the IPL covering these saws, are indicated by a dash (-) preceding the new part number.

The policy of McCulloch Corporation is one of continual improvement in design, manufacturing and engineering advancement wherever possible to assure still finer two-cycle power tools. Hence, specifications, equipment, colors, design and manufacturer's suggested list prices are subject to change without notice and McCulloch Corporation reserves the right to make such changes without prior notification or obligation to backfit or supply backfit components for units previously shipped from the factory.

## MINI-MAC 25 & 30 Chain Saw



**JULY 1976**

- CONTENTS -

	<u>Page</u>
Figure 1. General .....	2
Figure 2. CHAIN BRAKE Assembly ...	4
Figure 3. Carburetor Assembly .....	4
Figure 4. Powerhead Assembly .....	6
Accessories .....	5
Service Specifications .....	3



# MINI-MAC 25 & 30

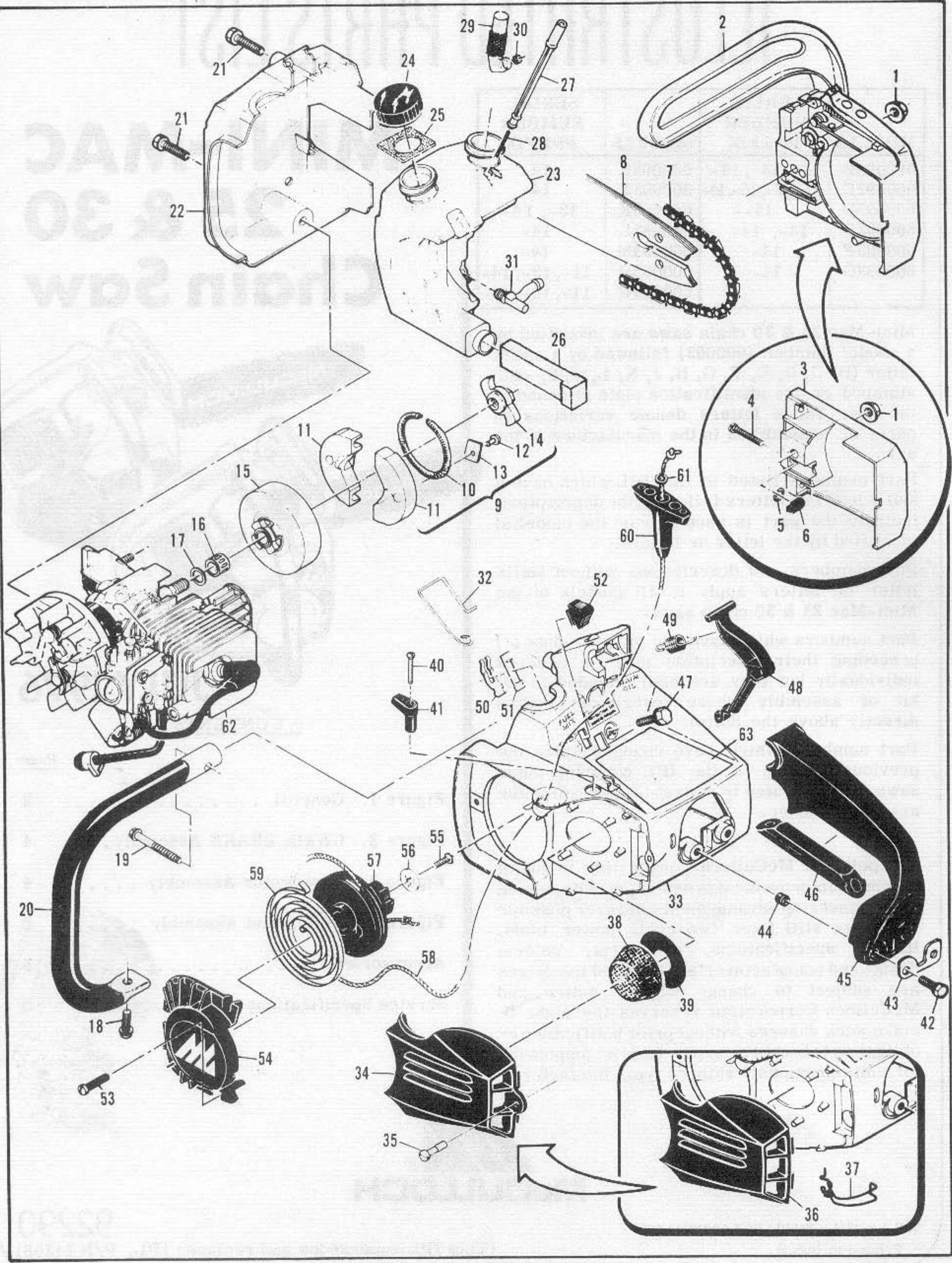


Figure 1. General

## Figure 1. General

Item No.	Part Number	Description	Units Per Asy	Item No.	Part Number	Description	Units Per Asy
1	110676	Nut-Hx 1/2-28	1	28	83946	. Spring-Piston	1
2		① CHAIN BRAKE Asy (Fig 2)		29	85557	. Body-Oiler	1
3	90636	② Guard Asy-Clutch	1	30	86438	⑤ Valve-Manual oil pump (C)	1
4	90658	② . Screw-Pan hd 8-32 x 1-1/8	1	31	84653	⑤ Connector-Manual oiler (C)	1
5	110907	② . Ring-retaining	1	32	84611	Rod-Manual oiler	1
6	84929	② . Nut-Bar adjusting	1	33	-91859	Kit-Shroud Asy	1
7		Chain Asy (See Accessories)		34	-91853	③ . Cover-Air cleaner	1
8		Bar (See Accessories)		35	-91796	③ . Screw-Air cleaner	1
9	-92727	③ Clutch Asy	1	36	90383	④ Cover-Air cleaner	1
10	69358	③ . Spring - Clutch	1	37	83882	④ Retainer-Cover	1
11	85202	③ . Kit-Clutch Shoe	2	38	85127	Filter-Air	1
12	-110957	③ . . Rivet	2	39	84918	Washer-Air seal	1
13	85064	③ . . Plate	2	40	110672	Screw-Oval hd 4-40 x 1	1
14	-92721	③ . . Spider	1	41	83870	Knob-Choke	1
(9)	85450	④ Clutch Asy	1	42	-110953	Screw-Hx hd 12-24 x 5/8	2
(10)	69358	④ . Spring-Clutch	1	43	-84520A	Plate-Washer	1
(11)	85202	④ . Kit-Clutch Shoe	2	44	84519	Sleeve-Handle	2
(12)	110709	④ . Rivet	2	45	83852A	Handle & Grip Asy	1
(13)	85064	④ . Plate	2	46	64872	② Grip-Handle	1
(14)	85449	④ . Spider	1	47	-110953	Screw-Hx hd 12-24 x 5/8	3
15	90150	Drum/Spkt/Brng Asy (B, C, D, E, F, G, H, J, K, L, M, U)	1	48	83878	Trigger	1
16	91222	. Kit - Needle Bearing (B, C, D, E, F, G, H, J, K, L, M, U)	1	49	83940	Spring-Trigger	1
(15)	85504	Drum & Sprocket Asy (P)	1	50	83935	Contact-Switch	1
(16)	67650	Bearing-Sprocket (P)	1	51	83936	Protector-Switch	1
17	67303	Washer-Sprocket (P)	1	52	83934	Button-Switch	1
18	-110953	Screw-Hx hd 12-24 x 5/8	1	53	-110959	Screw-Hx hd 8-32 x 1/2	3
19	110686	Screw-Hx hd 13-16 x 2	1	54	90425	Cover-Starter	1
20	84791	Frame & Grip Asy	1	55	-110706	Screw-Rd hd 8-32 x 5/8	1
21	110639	Screw-Hx hd 12-24 x 1	2	56	68497	Washer-Special	1
22	88591	Cover-Fuel & Oil tank	1	57	83876	④ Drum-Starter	1
23	91454A	Tank Kit -Fuel & Oil	1	(57)	-92316	③ Drum/Rope Asy	1
24	91283	① . Cap-Fuel & Oil (Unvented)	2	58	83203	. Rope-Starter	1
(24)*	-90922	② . Cap-Fuel & Oil (Vented)	2	59	83078	Spring-Rewind	1
25	91148	. Seal-Fuel vent	1	60	91255	Kit-Starter handle	1
26	84956	. Pickup-Fuel	1	61	105490	. Washer-Starter handle	1
27	83900A	. Piston-Manual oiler	1	62		Powerhead Asy (Fig 4)	
				63	-91694	Plate - Name (B, E, F, J, K, L, P, U)	1
				(63)	-91693	Plate - Name (C, D, G, H, M)	1

- ① Used on models with serial number prefix 13-, 14-.
  - ② Used on models with serial number prefix 11-, 12-.
  - ③ Used on models with serial number prefix 14-.
  - ④ Used on models with serial number prefix 11-, 12-, 13-.
  - ⑤ Used on models with serial number prefix 11-.
- \* Not included in Fuel and Oil Tank Kit, P/N 91454A.

### Service Specifications

Displacement	1.8 cu. in.(30cc)
Clutch Engaging Speed	2600 R.P.M.
Breaker Point Gap	.018" (.457 mm)
Timing	26° B.T.D.C.
Spark Plug Gap	.025" (.635 mm)

# MINI-MAC 25 & 30

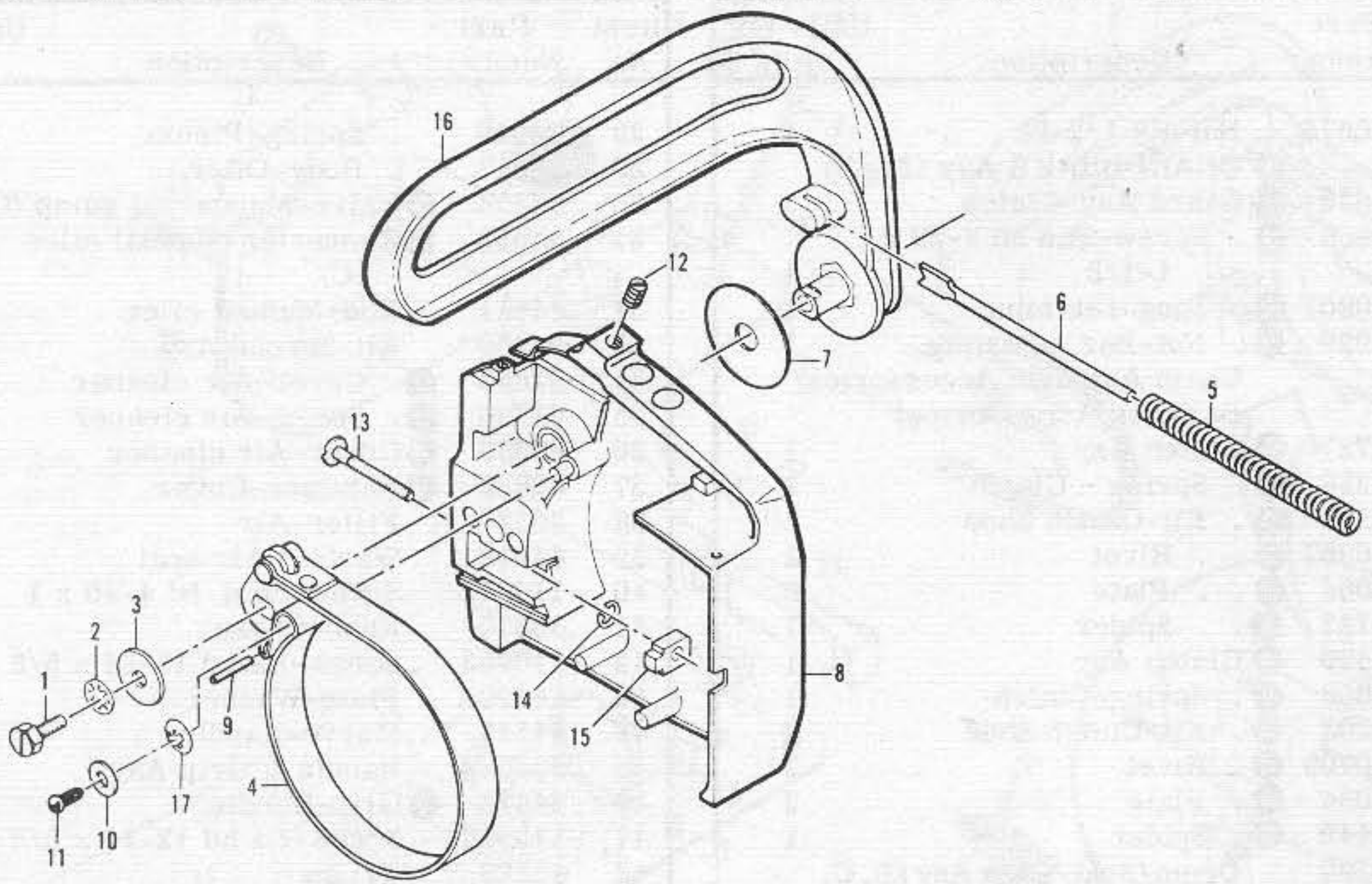


Figure 2. CHAIN BRAKE Assembly

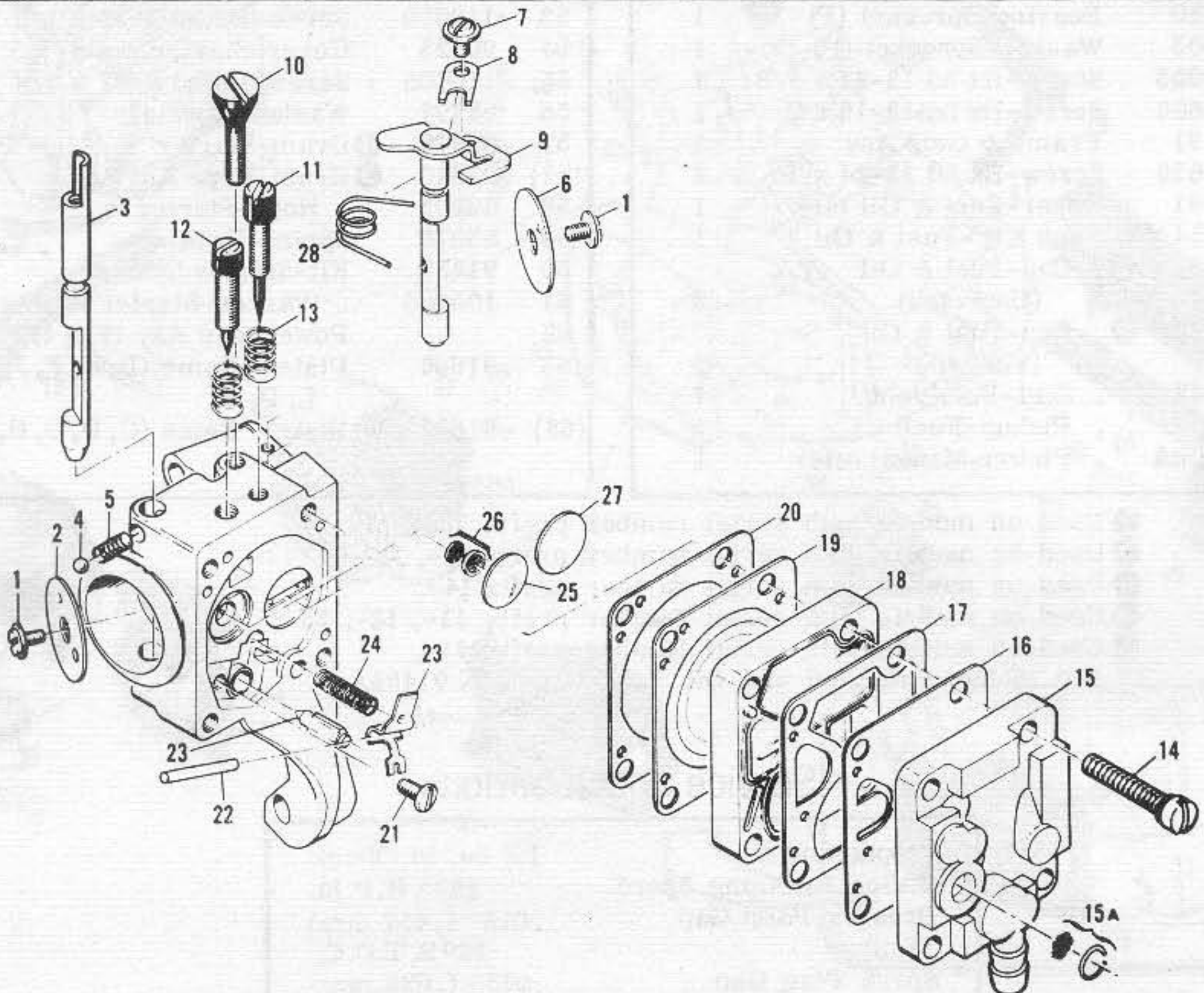


Figure 3. Carburetor Assembly

## Figure 2. CHAIN BRAKE Assembly

Item No.	Part Number	Description	Units Per Asy
	- 90570B	CHAIN BRAKE Asy	
1	102762	. Screw-Hx hd 10-24 x 1/2	1
2	101194	. Washer-Lock #10	1
3	110712	. Washer	1
4	90580	. Band & Lever	1
5	90587A	. Spring-Brake Actuator	1
6	90588	. Guide-Spring	1
7	90967	. Washer-Actuating Lever	1

Item No.	Part Number	Description	Units Per Asy
8	90571C	. Kit-Housing/Spring	1
9	103047 ①	. Pin	1
10	100001 ①	. Washer	1
11	110946 ①	. Screw Drive-6 x 5/16	1
12	-110955 ①	. Screw-Set 8-32 x 1/2	1
13	90658	. Screw-Adjusting	1
14	110907	. Ring-Retaining	1
15	84929	. Nut-Bar adjusting	1
16	90576	. Lever-Actuator	1
17	110913 ②	Fastener-Springtip	1

- ① Used on models with serial number prefix 14-.
- ② Used on models with serial number prefix 13-.

### Accessories

Part Number	Description
90745	Bar - 10" Mini Pro (M)
90641N	Chain Asy - 10" MP 370G (M)
90630	Bar - 10" Mini Mac (C, G)
90638N	Chain Asy - 10" MM370G (C, G)
90770	Bar - 12" Mac 6 (P)
88033N	Chain Asy - 12" SM250G (P)
90549	Bar - 12" Mini Pro (B, D, K, L, U)
90642N	Chain Asy - 12" MP370G (B, D)
90639N	Chain Asy - 12" MM370G (K, L, U)
90550	Bar - 14" Mini Pro (F, J)

Part Number	Description
90640N	Chain Asy - 14" MM370G (F, J)
83687	Guide-Timing
-91753	Case-Carrying
88756	Screen
68747	Gasket-Spark arrester
84992	Kit-Reed Muffler
85924	Kit-Spark Arrester (PM6 type)
89685	Screen-Spark arrester
85062	Kit-Piston Tool

## Figure 3. Carburetor Assembly

Item No.	Part Number	Description	Units Per Asy
	90918	Carburetor Asy	1
1	*83755	. Screw-Plate	2
2	68556	. Plate-Choke	1
3	85033	. Shaft-Choke	1
4	*100302	. Ball-Choke friction	1
5	*67504	. Spring-Choke friction	1
6	68553	. Plate-Throttle	1
7	70798	. Screw-Clip	1
8	68554	. Clip-Throttle shaft	1
9	90471	. Shaft Asy-Throttle	1
10	*68566	. Screw-Idle speed	1
11	*86446	. Needle-Idle	1
12	*86447	. Needle-High speed	1
13	*67502	. Spring-Needle	2
14	*68564	. Screw Asy-Body	4
15	91347	. Cover Asy-Pump	1
15A	85629	. . Kit-Vent screen	1

Item No.	Part Number	Description	Units Per Asy
16	*68563	. Diaphragm-Fuel pump	1
17	*85035	. Gasket-Pump diaphragm	1
18	85030	. Body-Fuel pump	1
19	*85036	. Diaphragm-Metering	1
20	*85034	. Gasket-Diaphragm	1
21	*67500	. Screw-Lever pin	1
22	*67508	. Pin-Lever	1
23	85059	. Kit-Needle & lever	1
24	*68567	. Spring-Lever	1
25	*68559	. Plug-Welsh 7/16	1
26	*83758	. Kit-Check valve	1
27	*68560	. Plug-Welsh 1/2	1
28	89785	. Spring-Throttle return	1
	86463	Repair Kit	

\*Included in Repair Kit, P/N 86463

# MINI-MAC 25 & 30

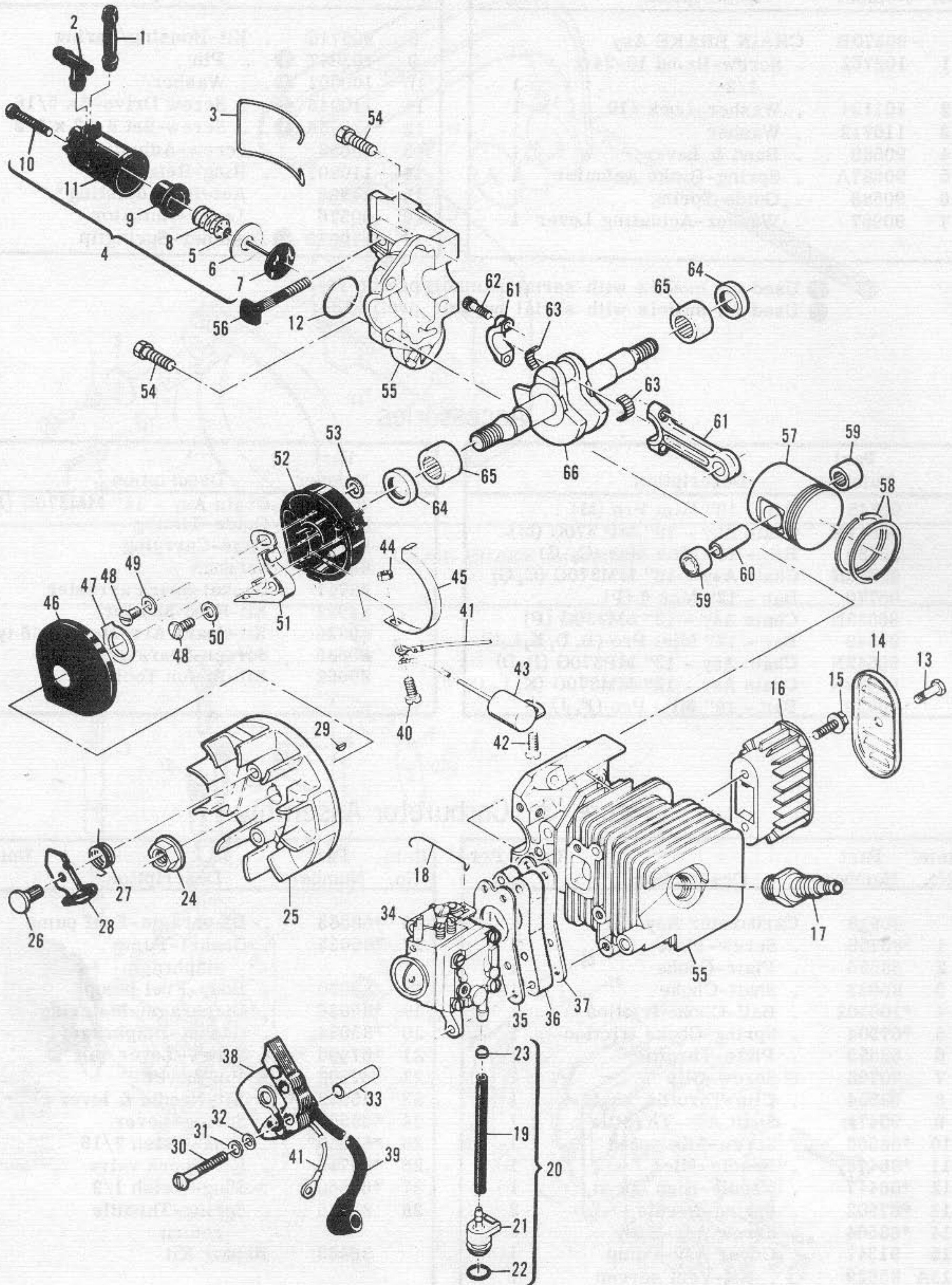


Figure 4. Powerhead Assembly

## Figure 4. Powerhead Assembly

Item No.	Part Number	Description	Units Per Asy
1*	83898	Connector-Outlet	1
2*	84613	Connector-Pump	1
3*	83896	Ball-Mounting	1
4*	83886	Pump Asy-Oiler	1
5*	105603	. "O" Ring	1
6*	85769	. Ring-Pump piston	1
7*	-92204	. Piston Asy-Pump	1
8*	83891	. Spring-Pump	1
9*	83890	. Sleeve-Pump	1
10*	110651	. Screw-Adjustment	1
11*	83887	. Body Asy-Pump	1
12*	110653	. "O" Ring	1
13	110674	Screw-Hx hd 10-24 x 1/2	1
14	89684	Cover-Muffler	1
15	110928	Screw-Hx hd 10-24 x 1/2	2
16	89682	Body-Muffler	1
17	63097	Spark Plug	1
18	89274	Rod-Throttle	1
19	-89059	① Hose-Fuel	1
20	90661	② Kit-Fuel Hose	1
(19)	90659	② . Hose-Fuel	1
21	90660	. Adaptor-Fuel hose	1
22	110908	. "O" Ring	1
23	87826	② . Clamp	1
24**	-110970	③ Nut-Hx 5/16-24	1
(24)	110931	④ Nut-Hx 3/8-24	1
25	-91961	③ Flywheel & Pawl Asy	1
26	68796	③ . Pin-Pawl	2
27	67814	③ . Spring-Pawl	2
28	-91872	③ . Pawl-Starter	2
(25)	69806	④ Flywheel & Pawl Asy	1
(26)	68796	④ . Pin-Pawl	2
(27)	67814	④ . Spring-Pawl	2
(28)	69103	④ . Pawl-Starter	2
29	-102164	③ Key-Woodruff	1
(29)	100106	④ Key-Woodruff	1
30	110586	Screw-Pan hd 8-32 x 1-3/4	3
31	105976	Washer-#8	3
32	67177	Washer-Insulating	3
33	68198	Tube-Insulating	3

Item No.	Part Number	Description	Units Per Asy
34		Carburetor Asy (Fig 3)	
35	68197	Gasket-Carburetor	1
36	90713	Insulator-Carburetor	1
37	90714	Gasket-Insulator	1
38	84957	Coil & Lamination Asy	1
39	50120	. Wire Asy-Spark plug	1
40	110364	Screw-Pan hd 6-32 x 5/8	1
41	69344	Wire Asy-Coil	1
42	110041	Screw-Pan hd 8-32 x 1/2 s/t	1
43	85358	Condenser	1
44	100035	Nut-Hx 6-32	1
45	84502	Connector-Stop switch	1
46	67841	Cover-Breaker box	1
47	69323	Seal-Breaker box	1
48	110041	Screw-Pan hd 8-32 x 1/2 s/t	2
49	69322	Washer-Special	1
50	105976	Washer-#8	1
51	88811	Breaker Asy	1
52	-84505	Kit-Breaker Box	1
53	-92037	. Washer	1
54	110639	Screw-Hx hd 12-24 x 1	4
55	-92279	Kit-Cyl/C'Case/Piston	1
56	83856	. Bolt-Bar mounting	1
57	-92274	③ . Piston Asy	1
58	-92752	③ . . Set-Piston Rings	1
59	110538	③ . . Bearing-Needle	2
(57)	84981	④ Piston Asy	1
(58)	87164	④ . Set-Piston Rings	1
(59)	110538	④ . Bearing-Needle	2
60	66867	Pin-Piston	1
61	68097	Connecting Rod Asy	1
62	66853	. Screw-Special	2
63	68095	. Roller-Needle (Set of 20)	1
64	83859	Seal-Oil	2
65	66854	Bearing-Needle	2
66	-91932	③ Crankshaft	1
(66)	86439A	④ Crankshaft	1

\*Not used on Mini Mac 25 models with serial number prefix 11-.

\*\*Flywheel nut torque should be 170 to 175 pound-inches (196.84 to 202.60 kilogram-centimeters) for nut, P/N 110970.

- ① Used on models with serial number prefix 13-, 14-.
- ② Used on models with serial number prefix 11-, 12-.
- ③ Used on models with serial number prefix 14-.
- ④ Used on models with serial number prefix 11-, 12-, 13-.