

346 XP



1.1999

Spare parts

Ersatzteile

Pièces détachées

Reserve onderdelen

Repuestos

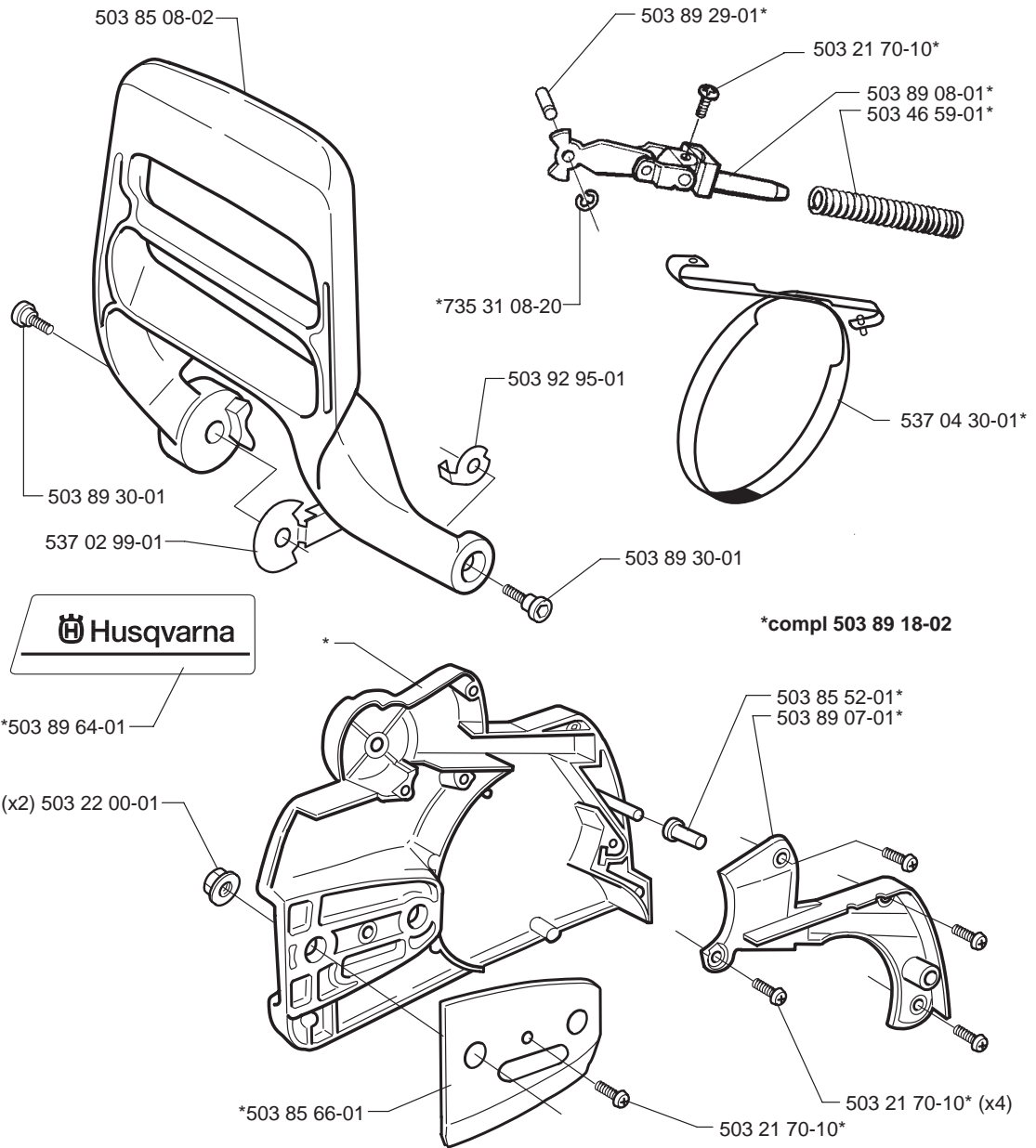
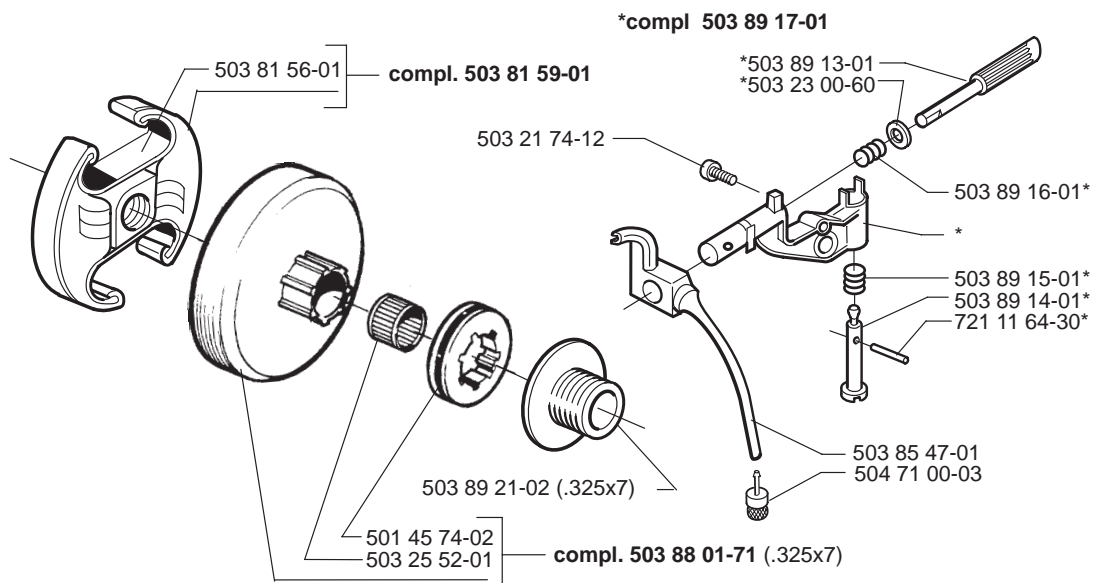
| PART NUMBER | SQURE | NOTE | PART NUMBER | SQURE | NOTE | PART NUMBER | SQURE | NOTE | PART NUMBER | SQURE | NOTE |
|--------------|-------|------|--------------|-------|------|--------------|-------|------|-------------|-------|------|
| 501 45 16-01 | D,E | | 503 80 06-01 | N | 1 | 503 90 56-01 | H | N | | | |
| 501 45 74-02 | B | | 503 81 56-01 | B | | 503 90 59-01 | H | | | | |
| 501 46 87-01 | N | | 503 81 59-01 | B | | 503 90 71-01 | K | XPG | | | |
| 501 48 54-02 | L | | 503 82 43-01 | L | | 503 90 73-71 | D | N | | | |
| 501 62 68-01 | H | | 503 82 43-02 | L | N | 503 90 90-01 | C | | | | |
| 501 62 98-01 | J | | 503 85 08-02 | A | N | 503 90 93-01 | K | | | | |
| 501 63 97-01 | C | | 503 85 41-01 | J | | 503 90 93-02 | K | XPG | | | |
| 501 66 61-01 | N | | 503 85 44-01 | J | | 503 91 04-03 | M | N | | | |
| 501 66 62-01 | N | | 503 85 45-01 | J | | 503 91 04-04 | M | N | XPG | | |
| 501 66 70-01 | N | 1 | 503 85 47-01 | B | | 503 91 39-01 | N | | EPA | | |
| 501 66 73-01 | N | 1 | 503 85 53-01 | G | | 503 91 40-01 | N | | EPA | | |
| 501 66 77-01 | N | | 503 85 53-02 | G | | 503 91 54-01 | N | | EPA | | |
| 501 66 78-01 | N | | 503 85 53-03 | G | | 503 92 24-01 | K | | | | |
| 501 66 84-01 | N | 1 | 503 85 66-01 | A | | 503 92 58-01 | K | XPG | | | |
| 501 69 17-01 | P | | 503 85 69-71 | H | | 503 92 61-01 | J | XPG | | | |
| 501 81 96-02 | J | | 503 85 76-71 | E | | 503 92 65-02 | P | | | | |
| 501 83 29-01 | N | | 503 85 99-01 | M | | 503 92 95-01 | A | | | | |
| 501 91 14-01 | P | | 503 86 25-01 | D | 2 | 503 93 04-01 | H | | | | |
| 502 25 47-01 | N | 1 | 503 86 26-01 | F | | 503 93 05-01 | L | XPG | | | |
| 503 08 18-01 | N | | 503 86 27-02 | F | | 503 94 28-01 | | 2 | | | |
| 503 08 20-01 | N | | 503 86 28-02 | F | | 503 94 44-01 | N | | EPA | | |
| 503 10 87-01 | N | | 503 86 36-01 | F | | 503 94 52-01 | N | | | | |
| 503 17 63-01 | N | | 503 86 37-71 | J | | 503 94 53-01 | N | | | | |
| 503 19 23-01 | N | | 503 86 62-01 | G | | 503 94 54-01 | N | | | | |
| 503 20 29-87 | F | | 503 86 63-01 | G | | 503 94 56-01 | N | | | | |
| 503 20 34-19 | M | | 503 86 64-01 | G | | 503 94 57-01 | N | | | | |
| 503 21 70-10 | A | | 503 86 65-01 | G | | 503 94 58-01 | N | | | | |
| 503 21 70-16 | L,P | | 503 86 91-01 | H | | 503 94 60-01 | N | | | | |
| 503 21 74-12 | B,H | | 503 86 92-01 | H | | 503 96 24-04 | L | N | | | |
| 503 21 74-25 | D,L | | 503 86 93-01 | H | | 503 97 06-01 | N | | | | |
| 503 21 74-32 | H | | 503 86 94-01 | G | | 503 97 07-01 | N | | | | |
| 503 21 74-50 | G | | 503 86 95-01 | G | | 503 97 08-01 | N | | EPA | | |
| 503 21 75-12 | H | | 503 86 96-01 | G | | 503 97 10-01 | N | | EPA | | |
| 503 21 75-20 | F,H | | 503 86 97-01 | G | | 503 97 11-01 | N | | EPA | | |
| 503 21 77-16 | M | | 503 86 98-71 | D | N | 503 97 12-01 | N | | EPA | | |
| 503 21 88-16 | K | | 503 87 49-01 | H | | 503 97 13-01 | D | | | | |
| 503 21 88-20 | J | | 503 87 50-01 | H | | 503 98 74-01 | C | N | | | |
| 503 21 88-25 | K | | 503 87 54-01 | H | | 503 99 16-01 | N | | | | |
| 503 22 00-01 | A | | 503 87 56-01 | H | | 503 99 86-01 | J | | | | |
| 503 22 10-11 | L | | 503 87 63-01 | M | | 504 71 00-03 | B | | | | |
| 503 23 00-60 | B | | 503 88 01-71 | B | | 504 86 04-08 | N | | | | |
| 503 23 01-01 | L | | 503 88 54-01 | H | | 505 27 57-19 | E | | | | |
| 503 23 51-08 | D | | 503 88 63-01 | H | | 505 30 51-25 | M | | | | |
| 503 25 20-02 | E | | 503 88 72-01 | H | | 505 31 67-17 | N | | | | |
| 503 25 52-01 | B | | 503 88 76-01 | M | | 505 52 01-25 | N | | | | |
| 503 26 30-17 | J | | 503 88 77-01 | M | | 506 02 83-01 | N | | | | |
| 503 28 16-13 | G,N | | 503 88 86-01 | H | | 530 03 50-15 | N | | | | |
| 503 28 16-14 | G,N | EPA | 503 88 92-01 | G | | 537 00 34-01 | N | | | | |
| 503 28 90-05 | D | N | 503 89 06-01 | M | | 537 02 99-01 | A | N | | | |
| 503 43 65-01 | H | | 503 89 07-01 | A | | 537 04 03-01 | H | N | | | |
| 503 44 32-01 | J | | 503 89 08-01 | A | | 537 04 30-01 | A | N | | | |
| 503 46 59-01 | A | | 503 89 13-01 | B | | 720 12 40-20 | J | N | | | |
| 503 54 39-01 | M | | 503 89 14-01 | B | | 721 11 64-30 | B | N | | | |
| 503 55 85-01 | P | | 503 89 15-01 | B | | 721 12 07-40 | H | | | | |
| 503 55 86-01 | P | | 503 89 16-01 | B | | 724 12 87-59 | F | N | | | |
| 503 55 86-02 | P | | 503 89 17-01 | B | | 729 42 21-01 | J | XPG | | | |
| 503 56 23-01 | N | | 503 89 18-02 | A | N | 735 31 08-20 | A | | | | |
| 503 56 25-01 | N | | 503 89 21-02 | B | | 737 44 10-00 | D | | | | |
| 503 56 34-01 | N | | 503 89 24-01 | H | | 738 22 02-25 | E | | | | |
| 503 57 76-02 | J | | 503 89 29-01 | A | | | | | | | |
| 503 58 15-01 | N | | 503 89 30-01 | A | | | | | | | |
| 503 60 04-01 | J | | 503 89 44-01 | D | 2 | | | | | | |
| 503 60 78-01 | N | | 503 89 47-01 | H | | | | | | | |
| 503 61 48-01 | N | | 503 89 50-01 | L | | | | | | | |
| 503 62 12-01 | P | | 503 89 60-01 | G | | | | | | | |
| 503 63 82-01 | N | | 503 89 64-01 | A | | | | | | | |
| 503 66 96-01 | N | | 503 89 66-01 | H | | | | | | | |
| 503 71 82-02 | K | XPG | 503 89 83-01 | K | | | | | | | |
| 503 78 32-01 | L | | 503 89 87-02 | L | | | | | | | |
| 503 79 05-02 | L | N | 503 90 39-01 | H | | | | | | | |

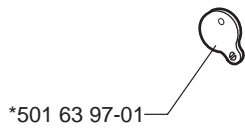
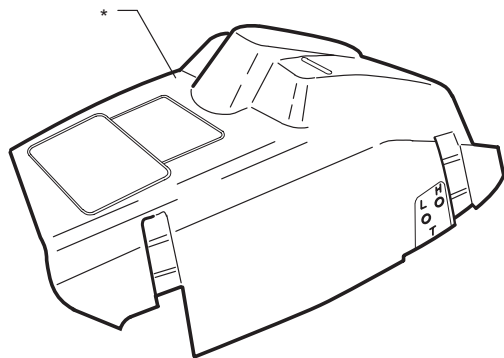
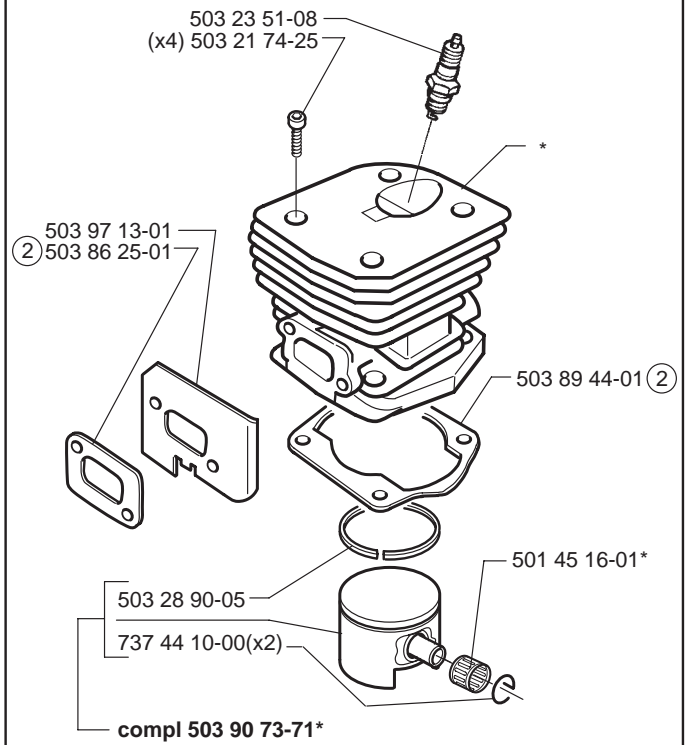
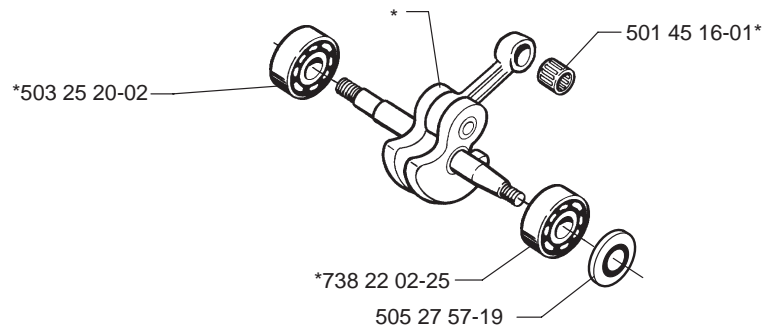
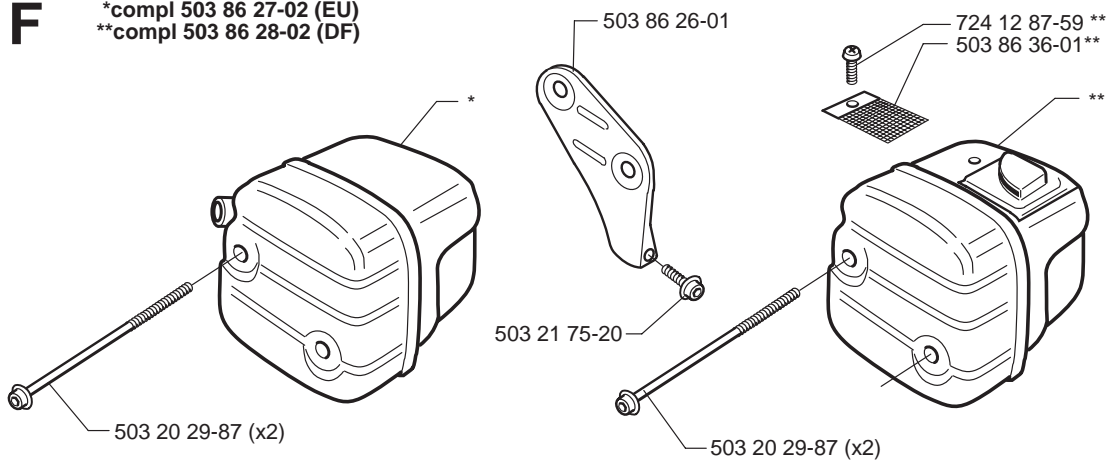
N= NEW PART
NEUES TEIL
NOUVELLE PIECE
NUEVA PIEZA
NY DETALJ

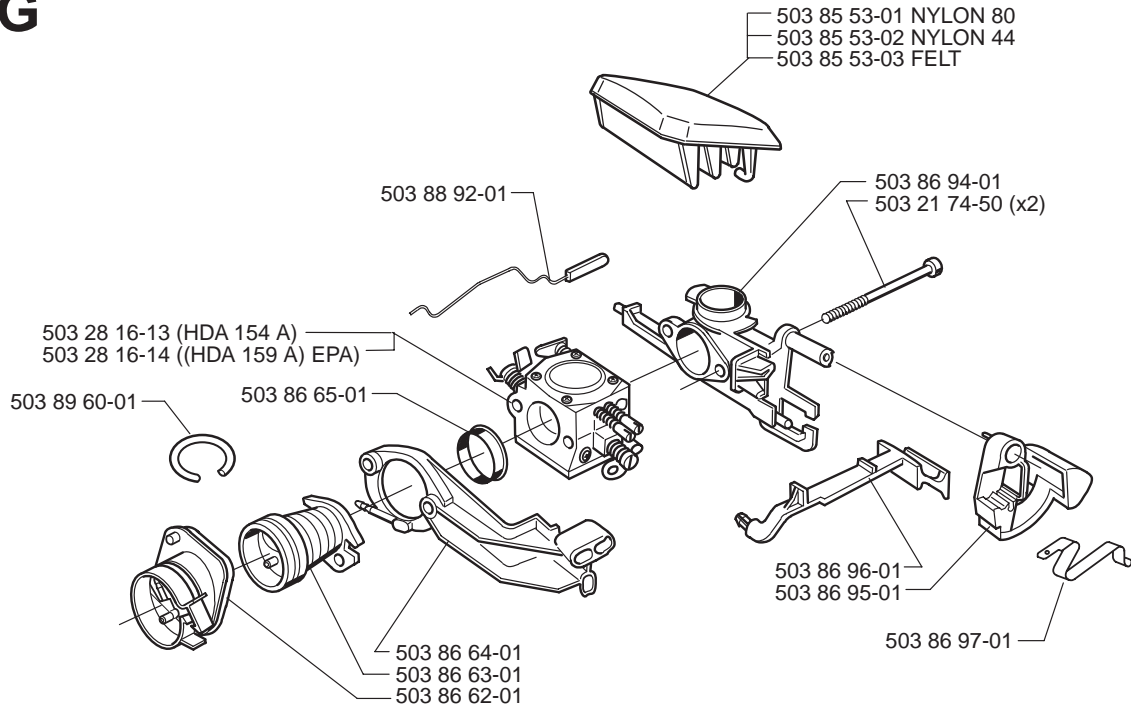
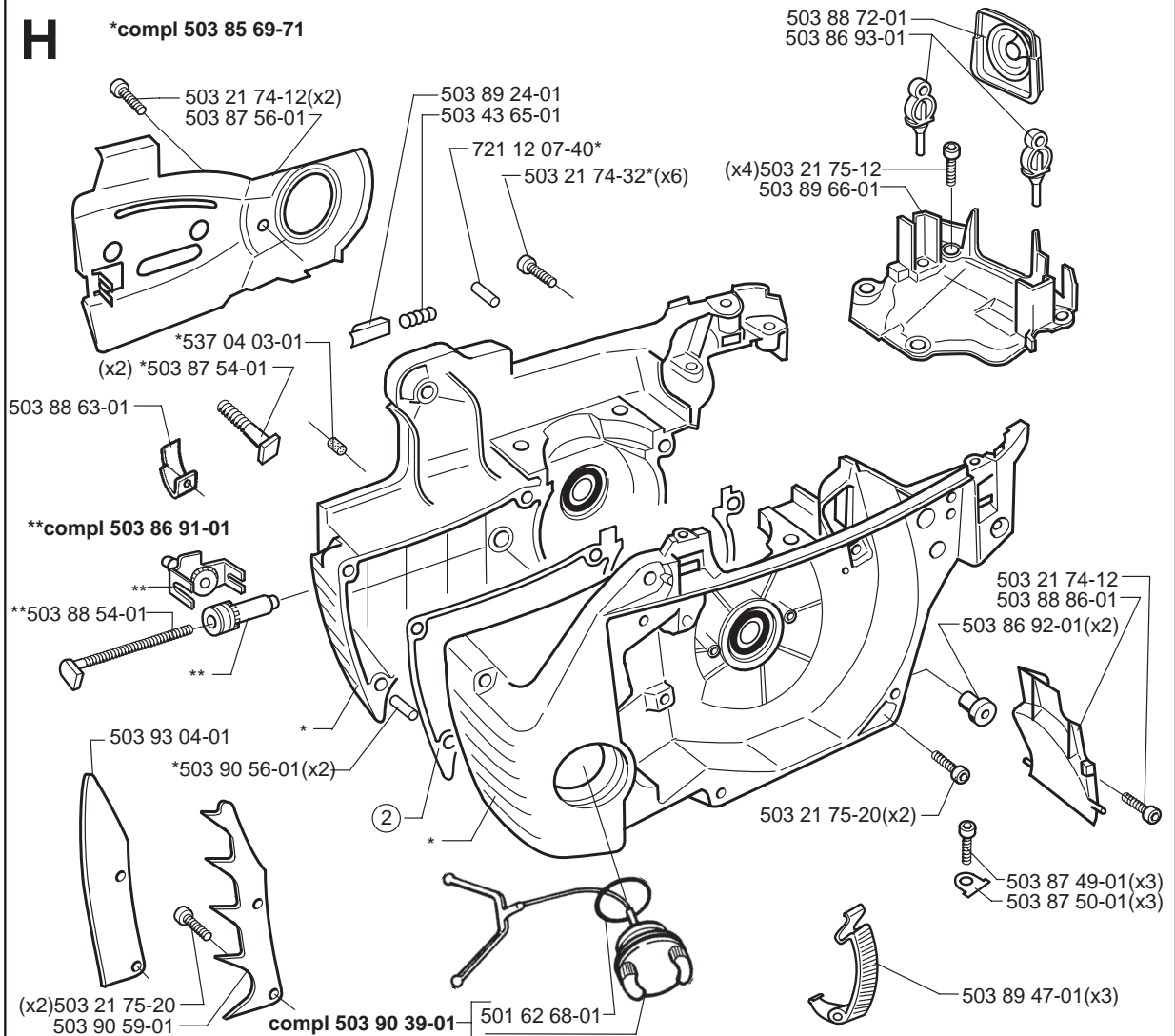
2= 503 94 28-01
SET OF GASKETS
DICHTUNGSSATZ
JEU DE JOINTS
JUEGO DE JUNTAS
PACKNINGSSATS

1= 501 66 84-01
SET OF GASKETS
DICHTUNGSSATZ
JEU DE JOINTS
JUEGO DE JUNTAS
PACKNINGSSATS

EPA = Environmental Protection Agency
(for USA only)
XPG = only for model 346XPG
(GENERATOR)

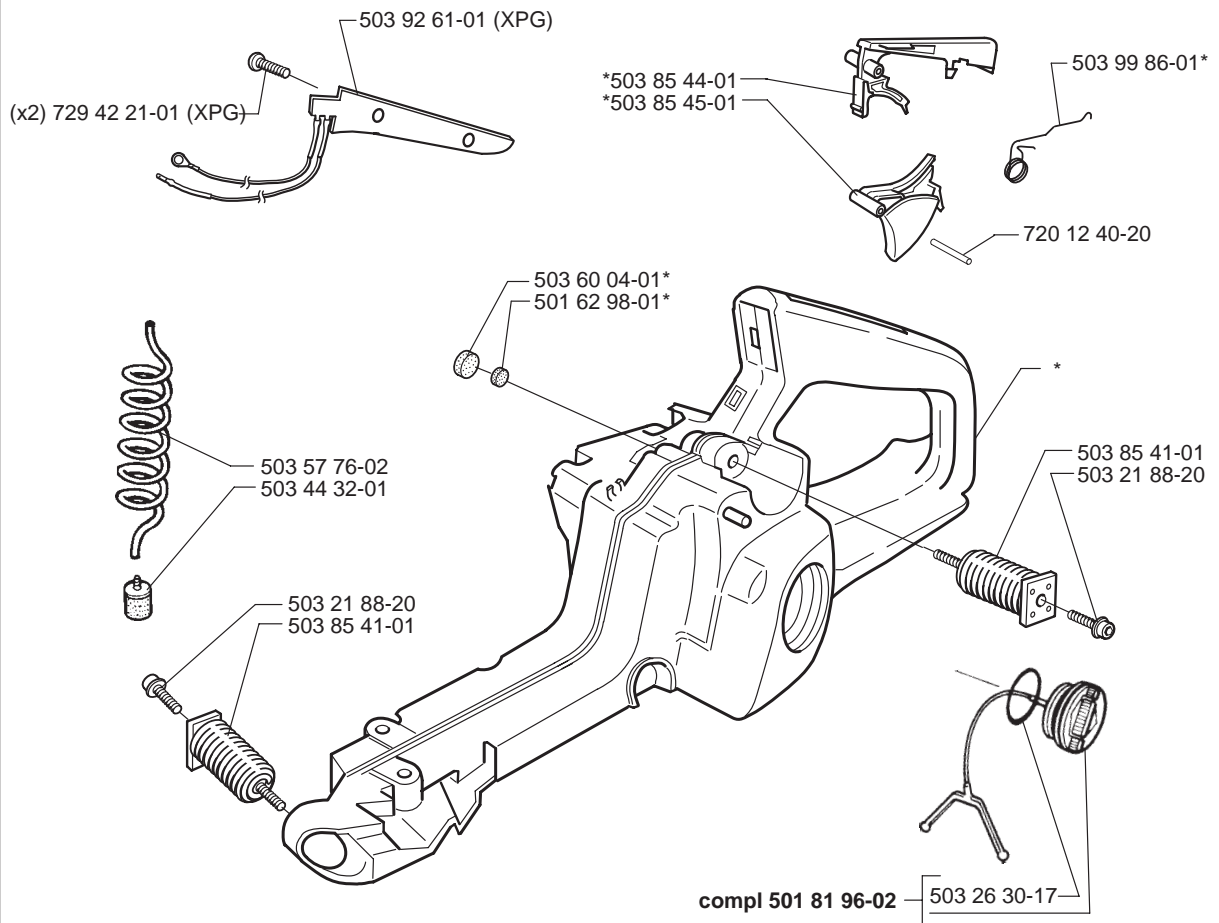
A**B**

C***compl 503 90 90-01*****501 63 97-01*****503 98 74-01****D*****compl 503 86 98-71****E*****compl 503 85 76-71****F*****compl 503 86 27-02 (EU)******compl 503 86 28-02 (DF)**

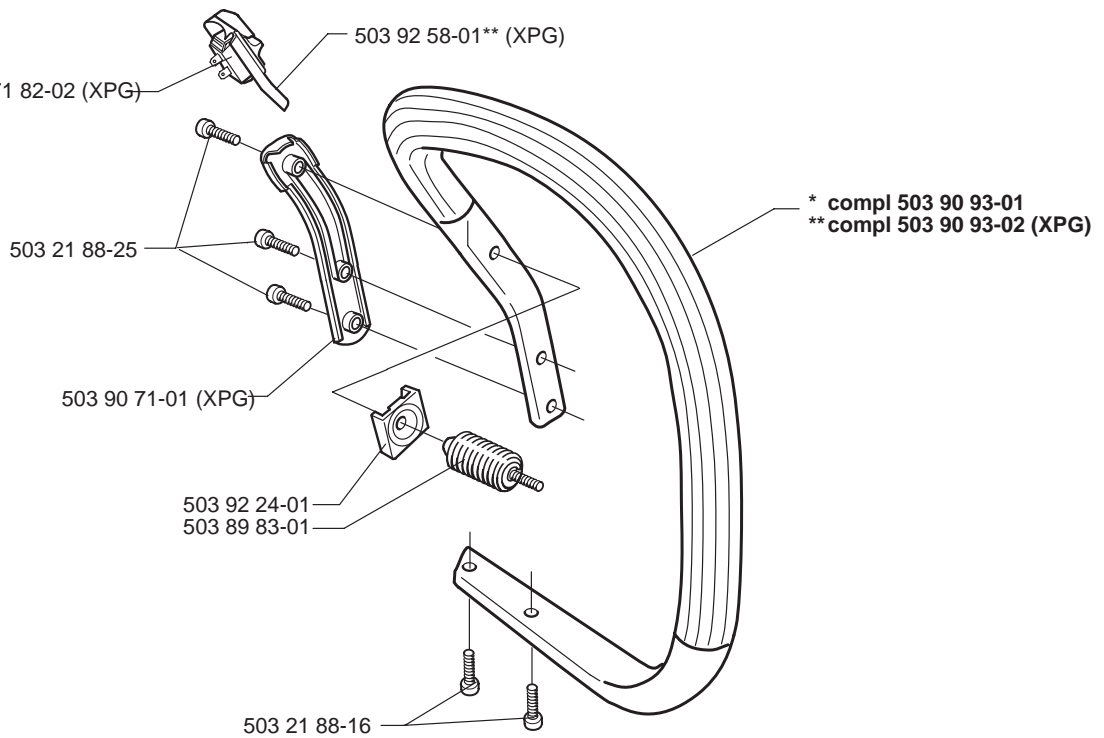
G**H*****compl 503 85 69-71**

J

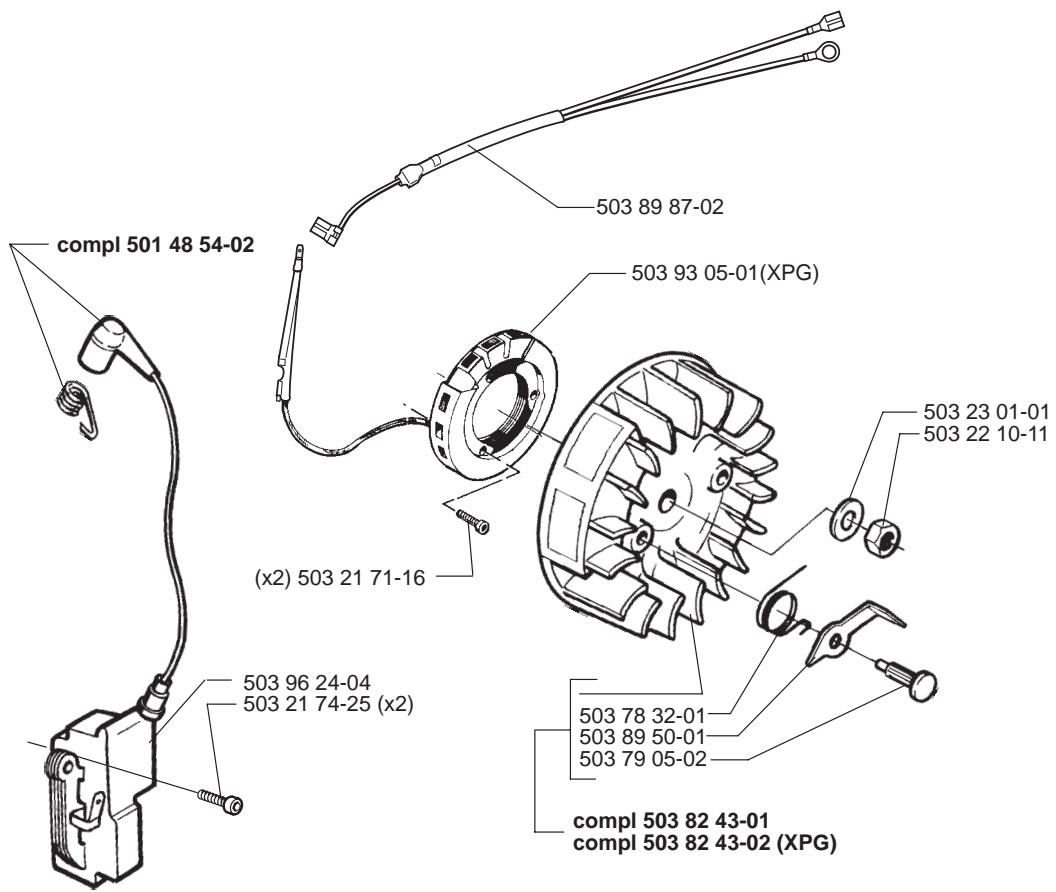
* compl 503 86 37-71

**K**

**503 71 82-02 (XPG)

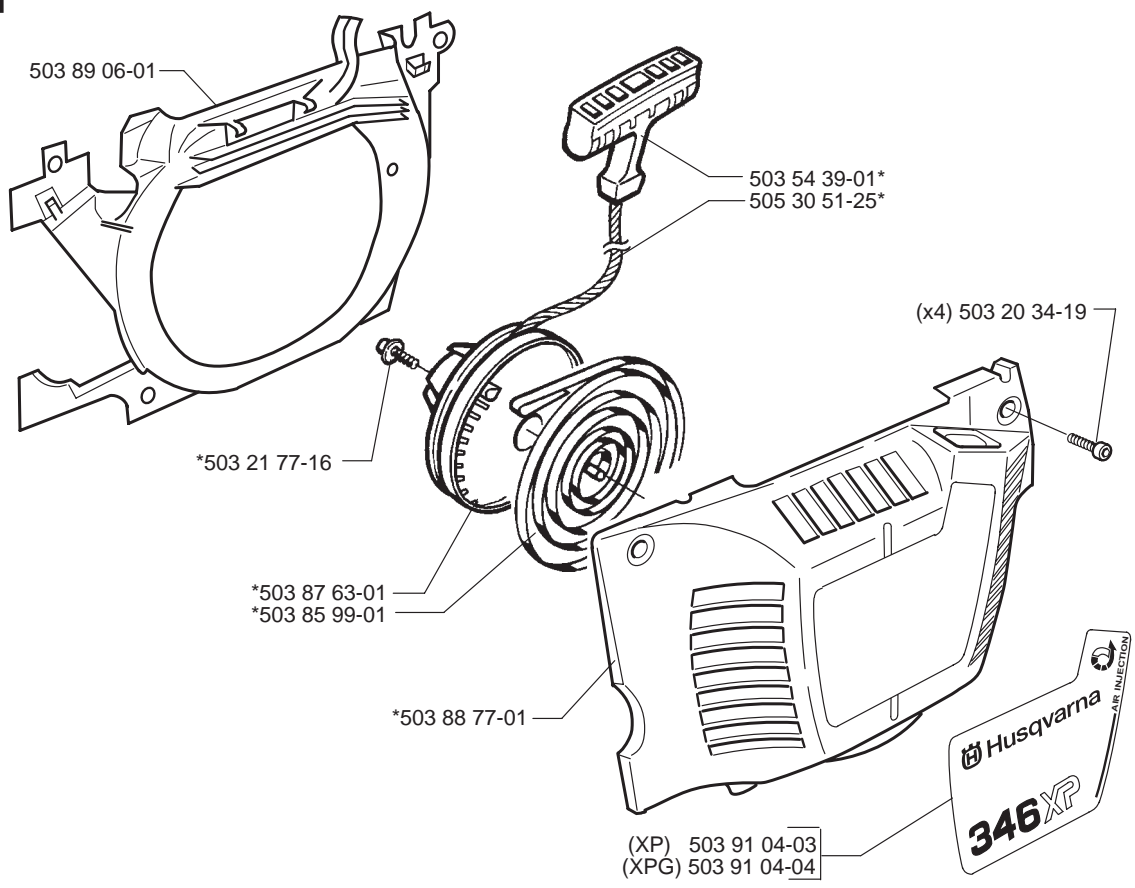


L

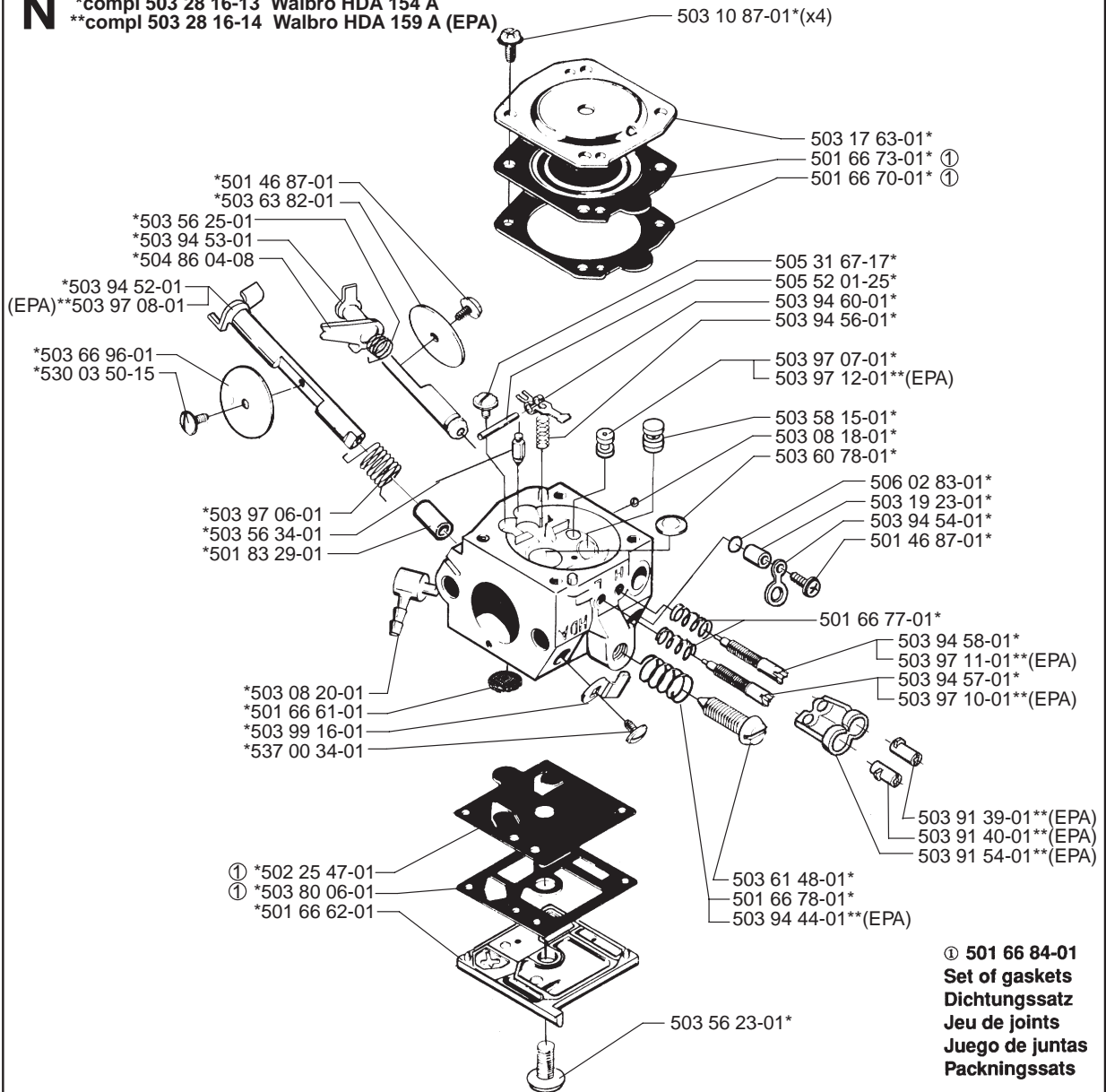


M

***compl 503 88 76-01**

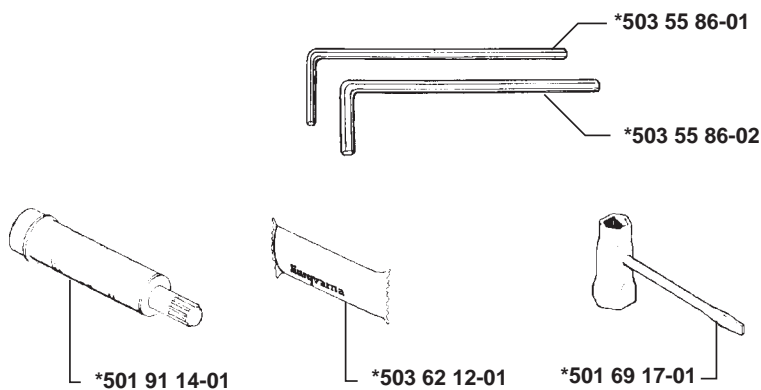


N *compl 503 28 16-13 Walbro HDA 154 A
 **compl 503 28 16-14 Walbro HDA 159 A (EPA)



P *compl 503 55 85-01

Tillbehör
 Accessories
 Zubehöre
 Accessoires
 Accesorios



*compl 503 92 65-02

