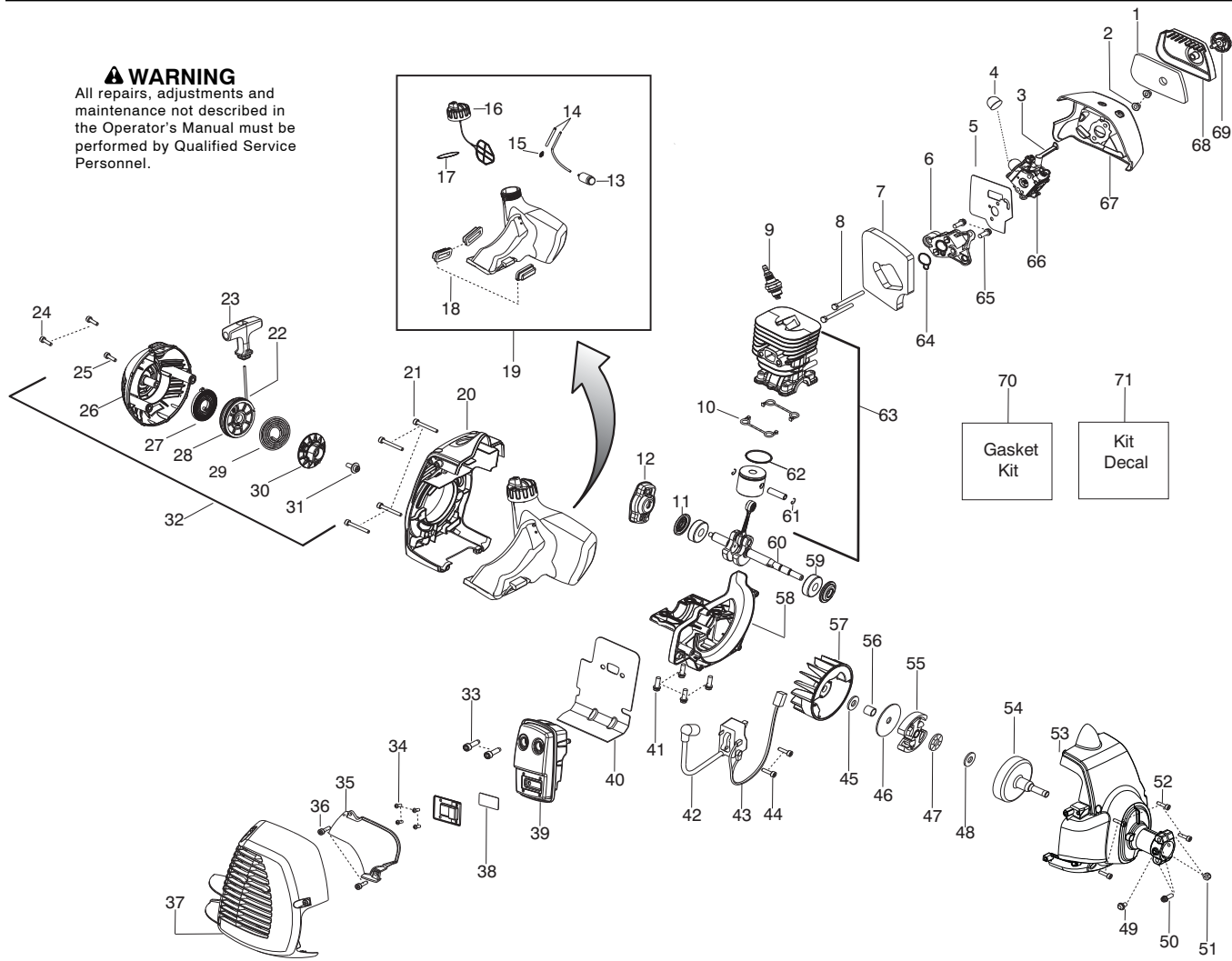


Parts List No. 545192138		Husqvarna ® PARTS LIST	MODEL 128LD (Lowes)
Date 3/09/10	Replaces 545192138 - 8/28/09		NOTE : Illustration may differ from actual model due to design changes.

⚠ WARNING
All repairs, adjustments and maintenance not described in the Operator's Manual must be performed by Qualified Service Personnel.



Ref.	Part No.	Description	Ref.	Part No.	Description	Ref.	Part No.	Description
1.	530150253	Filter	26.	*****	Hsg. - Starter w/eyelet	49.	*****	Screw
2.	530016101	Nut - Carb. Screw	27.	*****	Kit - Spring	50.	*****	Screw
3.	530057844	Lever - Choke	28.	*****	Kit - Starter Pulley	51.	530015768	Nut
4.	530058709	Bulb - Purge	29.	*****	Spring - Driver	52.	530016456	Screw
5.	545008086	Kit - Carb. Gasket (Incl. 7,64)	30.	*****	Pulley-Driver	53.	*****	Assy - Fan Housing
6.	530035596	Adaptor - Carb.	31.	530016468	Screw	54.	530150039	Assy - Clutch Drum
7.	545008084	Foam - Gasket (kit)	32.	*****	Assy - Starter Hsg. (Incl. 22,23,25 - 31)	55.	530055122	Assy - Clutch Assy
8.	530016400	Bolt	33.	530058982	Bolt - Muffler	56.	530057852	Spacer
9.	952030201	Plug - Spark (RCJ-8Y)	34.	530015241	Screw	57.	530039242	Flywheel
10.	*****	Seal - Cylinder (kit)	35.	530150440	Shield - Heat	58.	*****	Crankcase - Cast
11.	545008084	Seal - Crankshaft (kit)	36.	530016449	Screw	59.	545013401	Bearing
12.	*****	Assy - Starter Pawl	37.	576215001	Kit - Muffler Guard (Incl. Screws)	60.	*****	Assy - Crankshaft
13.	530095646	Assy - Fuel Filter	38.	545030501	Kit - Spark (Incl. 34)	61.	530015162	Retainer - Piston Pin
14.	*****	Kit - Fuel Line (Incl. 15)	39.	574031501	Kit - Muffler (Incl. 33,34,38,40)	62.	530019283	Ring - Piston
15.	*****	Fitting - Fuel line	40.	545008084	Gasket - Paper Met.(kit)	63.	*****	Kit - Piston/Cyl.(Incl. 61,62)
16.	530150350	Assy - Cap w/ret.(Incl. 17)	41.	530015897	Screw	64.	545008084	Seal - adaptor (kit)
17.	545008084	O-ring - Fuel Cap (kit)	42.	545046701	Module	65.	530015897	Screw
18.	530059780	Isolator - Fuel Tank	43.	530039227	Assy - Leadwire	66.	545081848	Kit - Carb. (Incl. 3,4,5)
19.	*****	Kit - Fuel Tank Assy. (Incl. 13,14,15,16,17,18)	44.	530016456	Screw	67.	545084601	Airbox
20.	576382101	Shroud - Rear (KIT)	45.	530016463	Washer	68.	530057846	Cover - Air Box
21.	530016448	Screw	46.	530094189	Washer - Clutch	69.	530059796	Assy - Knob
22.	*****	Kit - Rope	47.	545173401	Bearing - Thrust	70.	545008084	Kit - Gasket (Incl. 5,7,10,11,17,40,64)
23.	*****	Handle - Starter	48.	530016420	Washer - Thrust	71.	545003321	Kit - Decal

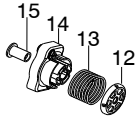
✓ = New Part Number For This IPL

★ = Refer to the Service Reference Indicated for more information.(Located at the END of the IPL)

Parts List No. 545192138		Husqvarna ® PARTS LIST	MODEL 128LD (Lowes)
Date 3/09/10	Replaces 545192138 - 8/28/09		NOTE : Illustration may differ from actual model due to design changes.

***** **Service Reference** *****

Note : Due to product improvements, your unit may have a different starter system.
Please refer to the serial number on your unit and order the parts below.



Serial Number - 2008-365N and lower, please use the following parts:

- Ref.# 12 - 530016475 Washer - Starter
- Ref.# 13 - 545160301 Spring - Starter Cup
- Ref.# 14 - 545102303 Assy - Starter Cup
- Ref.# 15 - 530059800 Coupling - Starter



Serial Number - 2009-001N and higher, please use the following parts:

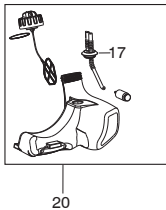
- Page 2, Ref.# 12 - 503873305 Assy - Starter Pawl

***** **Service Reference** *****

Note : Due to product improvements, your unit may have a different fuel tank assembly.
Please refer to the serial number on your unit and order the parts below.

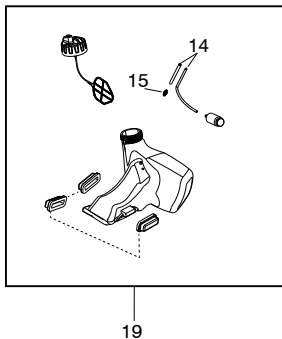
Serial Number - 2008-365N and lower, please use the following parts:

- Ref.# 17 - 545081897 - Kit - Fuel Line
- Ref.# 20 - 545105105 - Assy - Fuel Tank (Incl. filter, lines,cap)



Serial Number - 2009-001N and higher, please use the following parts:

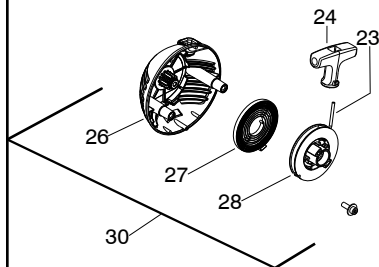
- Page 2, Ref.# 14 - 530069599 - Kit - Fuel Line (incl. 15)
- Page 2, Ref.# 15 - 530023877 - Fitting - Fuel Line
- Page 2, Ref.# 19 - 545180870 - Kit - Fuel Tank Assy



Parts List No. 545192138		Husqvarna ® PARTS LIST	MODEL 128LD (Loves)
Date 3/09/10	Replaces 545192138 - 8/28/09		NOTE : Illustration may differ from actual model due to design changes.

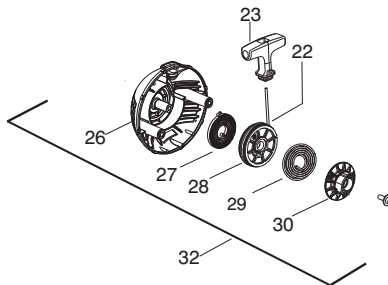
***** **Service Reference** *****

Note : Due to product improvements, your unit may have a different starter housing assembly. Please refer to the serial number on your unit and order the parts below.



Serial Number - 2008-365N and lower, please use the following parts:

- Ref.# 23 - 545029901 - Kit - Rope
- Ref.# 24 - 530150318 - Handle - Starter
- Ref.# 26 - 545029603 - Starter Hsg w/eyelet
- Ref.# 27 - 545029801 - Kit - Starter Spring
- Ref.# 28 - 545029701 - Kit - Starter Pulley
- Ref.# 30 - 545106301 - Assy - Starter Housing

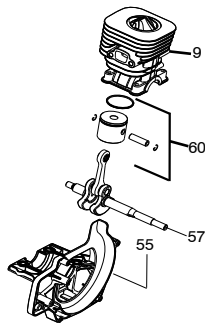


Serial Number - 2009-001N and higher, please use the following parts:

- Page 2, Ref.# 22 - 545008079 - Kit - Rope
- Page 2, Ref.# 23 - 545043205 - Handle - Starter
- Page 2, Ref.# 26 - 576382101 - Starter Hsg (KIT)
- Page 2, Ref.# 27 - 545008087 - Kit - Spring
- Page 2, Ref.# 28 - 545008078 - Kit - Starter Pulley
- Page 2, Ref.# 29 - 544038802 - Spring - Driver
- Page 2, Ref.# 30 - 544038702 - Pulley - Driver
- Page 2, Ref.# 32 - 576368301 - Assy - Starter Housing

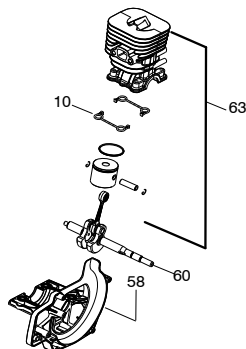
***** **Service Reference** *****

Note : Due to product improvements, your unit may have a different piston, cylinder & crankcase. Please refer to the serial number on your unit and order the parts below.



Serial Number - 2008-365N and lower, please use the following parts:

- Ref.# 9,55,60 - 545003378 Kit - Cyl., Piston, Crankcase
- Ref.# 57 - 545030001 Kit - Crankshaft



Serial Number - 2009-001N and higher, please use the following parts:

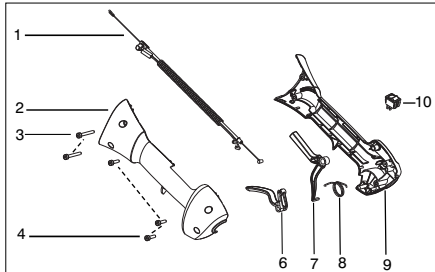
- Page 2, Ref.# 10 - 545008084 Seal - Cylinder (kit)
- Page 2, Ref.# 58 - 545195601 Crankcase
- Page 2, Ref.# 60 - 545195202 Assy-Crankshaft
- Page 2, Ref.# 63 - 545008082 Kit - Cylinder / Piston

Parts List No. 545192138		Husqvarna ® PARTS LIST	MODEL 128LD (Lowes)
Date 3/09/10	Replaces 545192138 - 8/28/09		NOTE : Illustration may differ from actual model due to design changes.

***** **Service Reference** *****

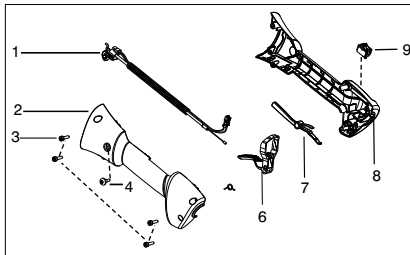
Note : Due to product improvements, your unit may have a different throttle housing assembly.
Please refer to the serial number on your unit and order the parts below.

Serial Number - 2010-72N and lower, please use the following parts:



- Ref.# 1 - 545125301 - Assy-Cable/Wire Harness
- Ref.# 2 - 545062001 - Housing-throttle (RH)
- Ref.# 3 - 530016448 - Screw
- Ref.# 4 - 530016449 - Screw
- Ref.# 6 - 545066001 - Trigger
- Ref.# 7 - 530059804 - Lockout - Throttle
- Ref.# 8 - 545045601 - Spring - Lockout
- Ref.# 9 - 545067001 - Housing-throttle (LH)
- Ref.#10- 545030601 - Kit - Switch

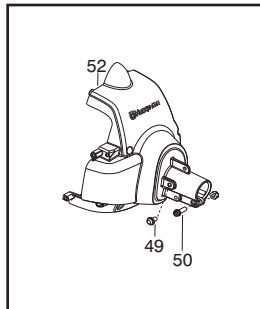
Serial Number - 2010-73N and higher, please use the following parts:



- Ref.# 1 - 576139401 - Assy. - Cable/Wire Harness
- Ref.# 2 - 545223001 - Housing-throttle (RH)
- Ref.# 3 - 530016449 - Screw
- Ref.# 4 - 530015805 - Screw
- Ref.# 6 - 574355301 - Trigger
- Ref.# 7 - 574355401 - Lockout - Throttle
- Ref.# 8 - 545223201 - Housing-throttle (LH)
- Ref.# 9 - 545049309 - Switch

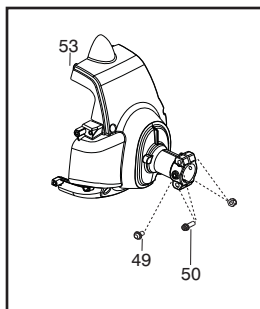
***** **Service Reference** *****

Note : Due to product improvements, your unit may have a different fan housing assembly.
Please refer to the serial number on your unit and order the parts below.



Serial Number - 2010-72N and lower, please use the following parts:

- Ref.# 49 - 530016469 - Screw
- Ref.# 50 - 530016470 - Screw
- Ref.# 52 - 545017501 - Assy. - Fan Housing



Serial Number - 2010-73N and higher, please use the following parts:

- Ref.# 49 - 530015805 - Screw
- Ref.# 50 - 530015774 - Screw
- Ref.# 53 - 545205201 - Assy. - Fan Housing