

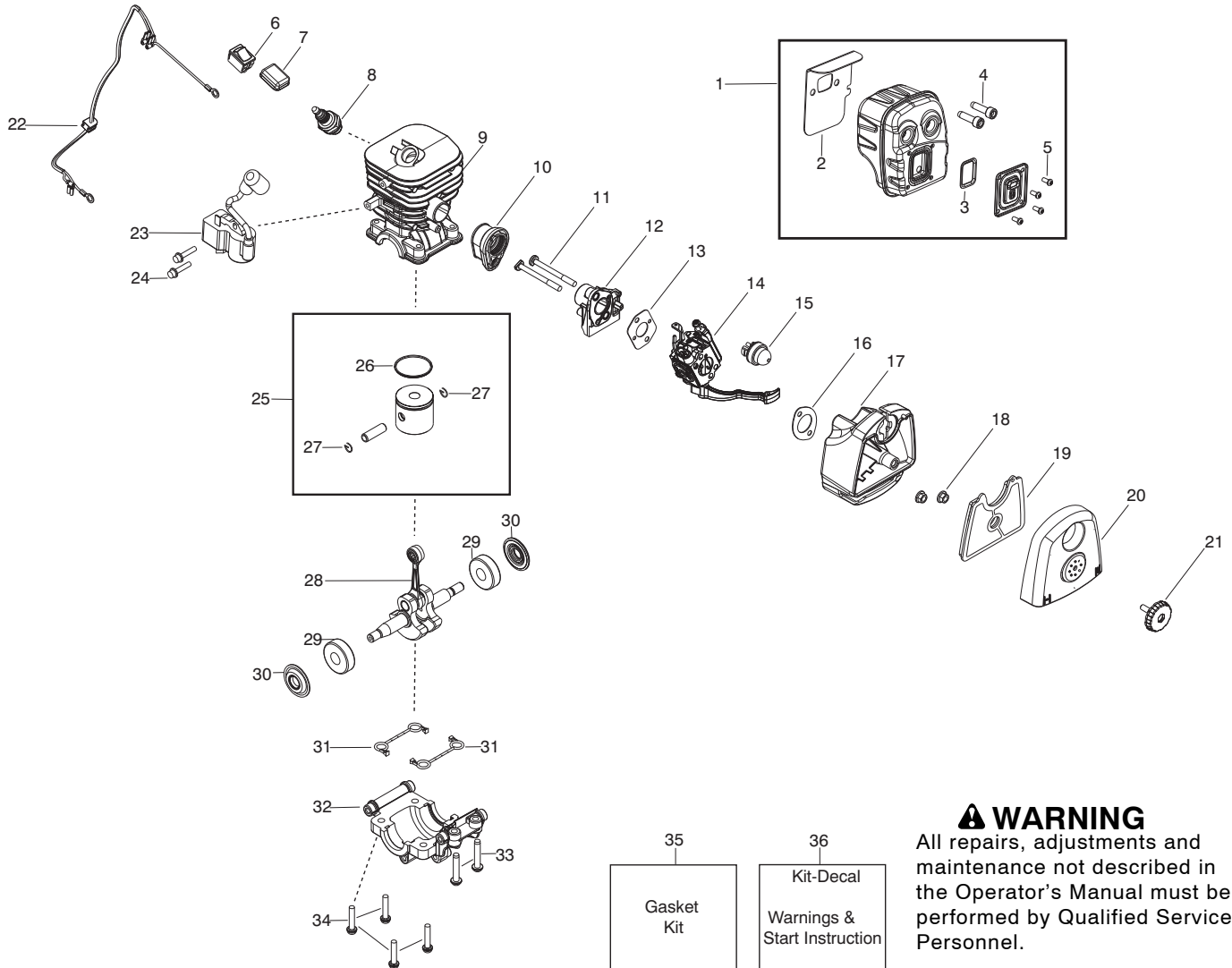
**⚠ WARNING**

All repairs, adjustments and maintenance not described in the Operator's Manual must be performed by Qualified Service Personnel.

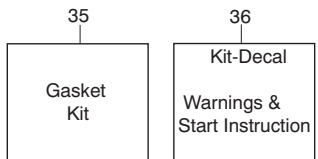
Ref.	Part No.	Description	Ref.	Part No.	Description
1.	545081817	Kit - Rope	29.	530095646	Assy - Fuel pickup
2.	545043204	Handle - Starter	30.	545108901	Assy - Fuel tank (Incl. 26,27,28,29)
3.	530015814	Screw	31.	530015814	Screw
4.	545081822	Kit - Cruise control (Incl. 5,6,7)	32.	★★★★★	Scroll - Flywheel
5.	530015147	Washer - Wave	33.	530015814	Screw
6.	545111501	Ratchet - Cruise control	34.	530015810	Screw
7.	530015814	Screw	35.	545088801	Assy - Flywheel
8.	545119002	Handle - Assist	36.	530015828	Washer
9.	545157901	Assy. - Muffler guard	37.	530016134	Nut - Flywheel
10.	545108701	Assy. - Knob tube clamp	38.	545108801	Cover - Motor housing
11.	545111301	Wire - Linkage	39.	545112801	Screw
12.	545111601	Trigger - Throttle	40.	545089001	Hub
13.	545131701	Wire - Handle ground	41.	545115901	Spring - EPS2
14.	545173201	Impeller	42.	545006084	Kit - Starter (Incl. 39,40,41)
15.	530015197	Nut - Blower tube	43.	530042095	Spring - Starter
16.	545111101	Spring - Vac door	44.	545111801	Housing - Starter Cover
17.	545111201	Cover - Vac door	45.	530015810	Screw
18.	530015814	Screw			
19.	575533201	Assy - Outer scroll (Incl. 16,17)			
20.	545147101	Nut - Impeller			
21.	★★★★★	Blade - Mulch	<b>Not Shown</b>		
22.	★★★★★	Washer			
23.	545164501	Washer - Impeller			
24.	530016445	Screw			
25.	545110001	Scroll - Inner	545154658		Manual - Operators
26.	530047721	Bulb - Purge			
27.	545081841	Kit - Fuel line grommet (Incl. 26,29)			
28.	530150350	Assy - Fuel cap with retainer			

✓ = New Part Number For This IPL

★ = Refer to the Service Reference Indicated for more information. (Located at the END of the IPL)



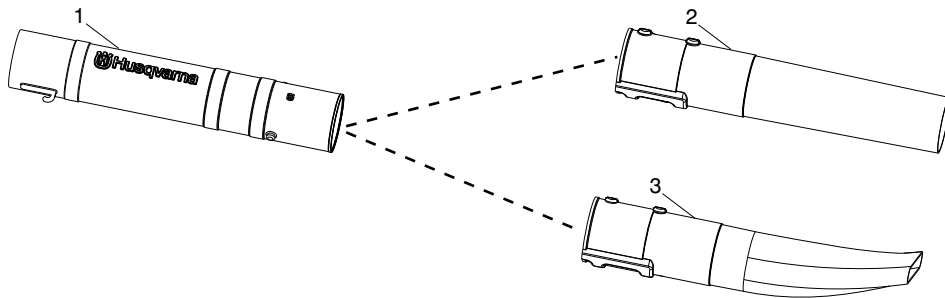
**⚠ WARNING**  
All repairs, adjustments and maintenance not described in the Operator's Manual must be performed by Qualified Service Personnel.



Ref.	Part No.	Description	Ref.	Part No.	Description
1.	545111901	Assy - Muffler (Incl. 2,3,4,5)	23.	545108101	Module - Ignition
2.	545081813	Gasket - Muffler (kit)	24.	530016456	Screw
3.	545081810	Kit - Spark Screen (Incl. 5)	25.	545081814	Kit - Piston (Incl. 26,27)
4.	530058982	Bolt - Muffler	26.	530019283	Ring - Piston
5.	530015241	Screw	27.	530015162	Retainer - Piston pin
6.	545049301	Switch	28.	545081816	Kit - Crankshaft
7.	545128201	Protector - Switch	29.	545013401	Bearing
8.	952030249	Accy - Spark Plug (RCJ6-Y)	30.	545081815	Kit - Crankshaft seal
9.	★ ★ ★ ★ ★	Cylinder - Chrome	31.	545081813	Seal - Cylinder (kit)
10.	545132501	Boot - Carb.	32.	545068301	Cap - Bearing
11.	530016187	Screw	33.	530015940	Screw
12.	545133301	Plate - Carb.	34.	530015897	Screw
13.	545081813	Gasket - Carb. (kit)	35.	545081813	Kit - Gasket (Incl. 2,13,16,31)
14.	545081811	Kit - Carb. (Zama W37) (Incl. 13,16)	36.	545081859	Kit - Decal
15.	530047721	Bulb - Purge (Included with #26 on page 1)	<b>Not Shown</b>		
16.	545081813	Gasket - Airbox (kit)	✓ 545134802	Decal -Starter Cover	
17.	545109801	Base - Airbox			
18.	530016101	Nut - Carb screw			
19.	545112101	Filter - Air			
20.	545176801	Cover - Airbox			
21.	530059796	Assy - Airbox Knob			
22.	545108202	Assy - Leadwire			

✓ = New Part Number For This IPL      ★ = Refer to the Service Reference Indicated for more information. (Located at the END of the IPL)

<b>Parts List No.</b> 545103439		<b>Husqvarna</b> PARTS LIST	<b>MODEL</b> HVA 125BX (US)
<b>Date</b> 1/29/10	<b>Replaces</b> 545103439 - 10/13/08		<b>NOTE</b> : Illustration may differ from actual model due to design changes.



**⚠ WARNING**

All repairs, adjustments and maintenance not described in the Operator's Manual must be performed by Qualified Service Personnel.

Ref.	Part No.	Description
1.	545140201	Assy - Tube - Upper Blower w/barrier
2.	545118001	Tube - Lower blower (round)
3.	545119501	Tube - Lower blower (flare)

✓ = New Part Number For This IPL

★ = Refer to the Service Reference Indicated for more information.(Located at the END of the IPL)

<b>Parts List No.</b> 545103439		 <b>Husqvarna</b> PARTS LIST	<b>MODEL</b> HVA 125BX (US)
<b>Date</b> 1/29/10	<b>Replaces</b> 545103439 - 10/13/08		<b>NOTE</b> : Illustration may differ from actual model due to design changes.

\*\*\*\*\* **Service Reference** \*\*\*\*\*

Note : Due to product improvements, please refer to the serial number on your unit and order the parts below.

Serial Number - 2008-233N and lower, please use the following parts:

Page 1, Ref.# 32 - 545008035 Kit - Cylinder and Flywheel Scroll

Page 2, Ref.# 9 - 545008035 Kit - Cylinder and Flywheel Scroll

Serial Number - 2008-234N and higher, please use the following parts:

Page 1, Ref.# 32 - 545132801 Flywheel Scroll

Page 2, Ref.# 9 - 545132601 Cylinder

\*\*\*\*\* **Service Reference** \*\*\*\*\*

Note : Due to product improvements, please refer to the serial number on your unit and order the parts below.

Serial Number - 2008-292N and lower, please use the following parts:

Page 1, Ref.# 21 - 545008036 Kit - Mulch Blade

Page 1, Ref.# 22 - 545008036 Kit - Mulch Blade

Serial Number - 2008-293N and higher, please use the following parts:

Page 1, Ref.# 21 - 545202801 Mulch Blade

Page 1, Ref.# 22 - 530015127 Washer