

Homelite®

- GB PARTS LIST
- F LISTE DE PIÈCES
- D TEILELISTE
- I ELENCO DEI PEZZI
- E LISTA DE PIEZAS

z4400 UT10765

d4400b UT10750

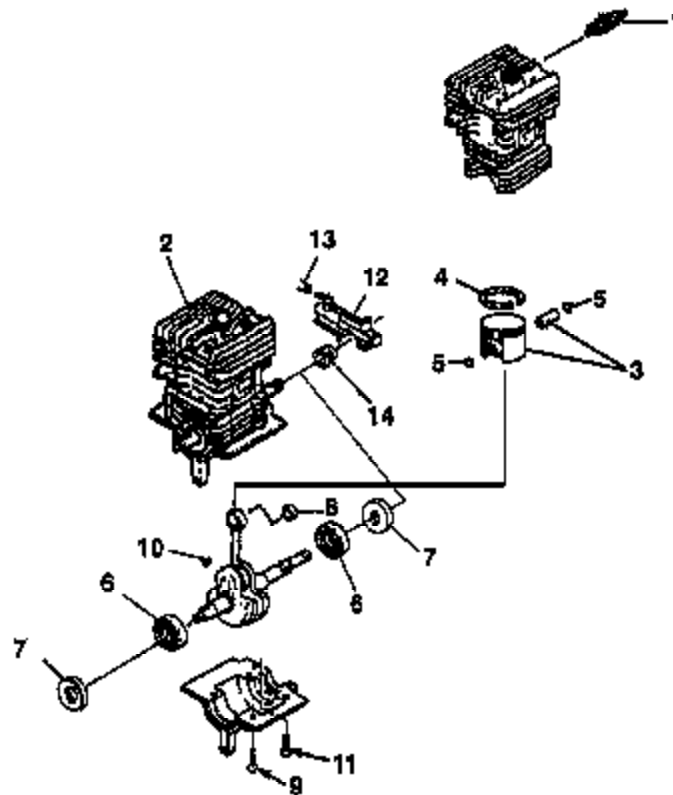
i4400b UT10764
(Int'l)

- GB CHAIN SAW
- F SCIE A CHAÎNE
- D MOTOSEGHE
- I MOTORSÄGENBESITZER
- E MOTOSIERRA

Printed in U.S.A.
Imprimé aux E.-U.
Gedruckt in den U.S.A.
Stampato negli Stati Uniti
Impreso en EE. UU.

P/N 19461

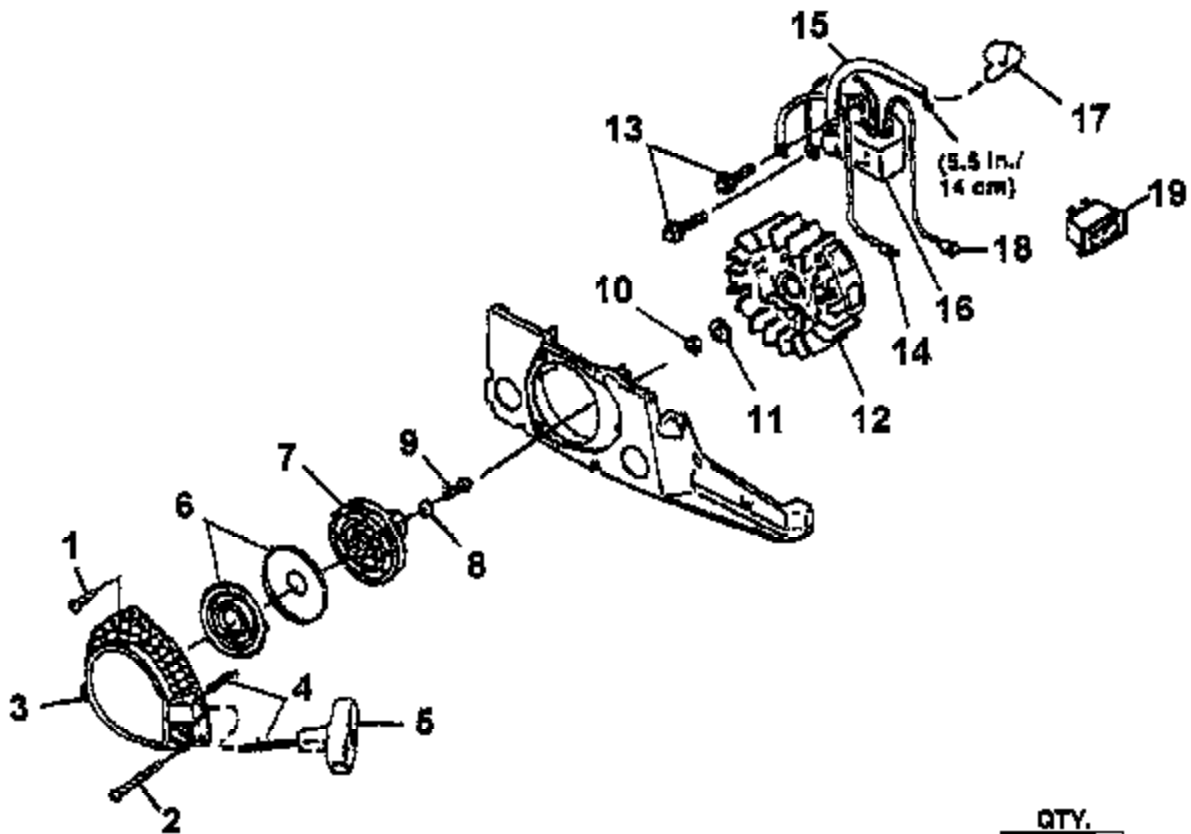
ENGINE INTERNAL



NO.	PART NO.	DESCRIPTION	QTY.		
			24488	041990	14999
1	98217 S	SPARK PLUG (RCJ6Y)	1	1	1
2	• A 07275	SHORT BLOCK	1	1	1
3	• A 08213	PISTON & PIN	1	1	1
4	07278	RING, PISTON ASSEMBLY	1	1	1
		WRIST PIN	1	1	1
5	64813	RING, WRIST PIN RETAIN.	2	2	2
6	A 08340	BEARING & CAP, CRANKSHAFT	2	2	2
7	08339	SEAL, SHAFT	2	2	2
8	70277	BEARING, NEEDLE	1	1	1
9	80801	SCREW, Hex Hd. (12-24 X 7/8")	4	4	4
10	75078	KEY, WOODRUFF	1	1	1
11	82148	SCREW, FIL HD. (8-32 X 5/8") (OIL PUMP)	2	2	2
12	A 02802 A	OIL PUMP	1	1	1
13	02548	TUBING, OIL (TO GUIDE BAR)	1	1	1
14	06342	WORM GEAR, LEFT HAND	1	1	1

Assembly
 Ensemble
 Baueilze
 Comples
 Conjuntos

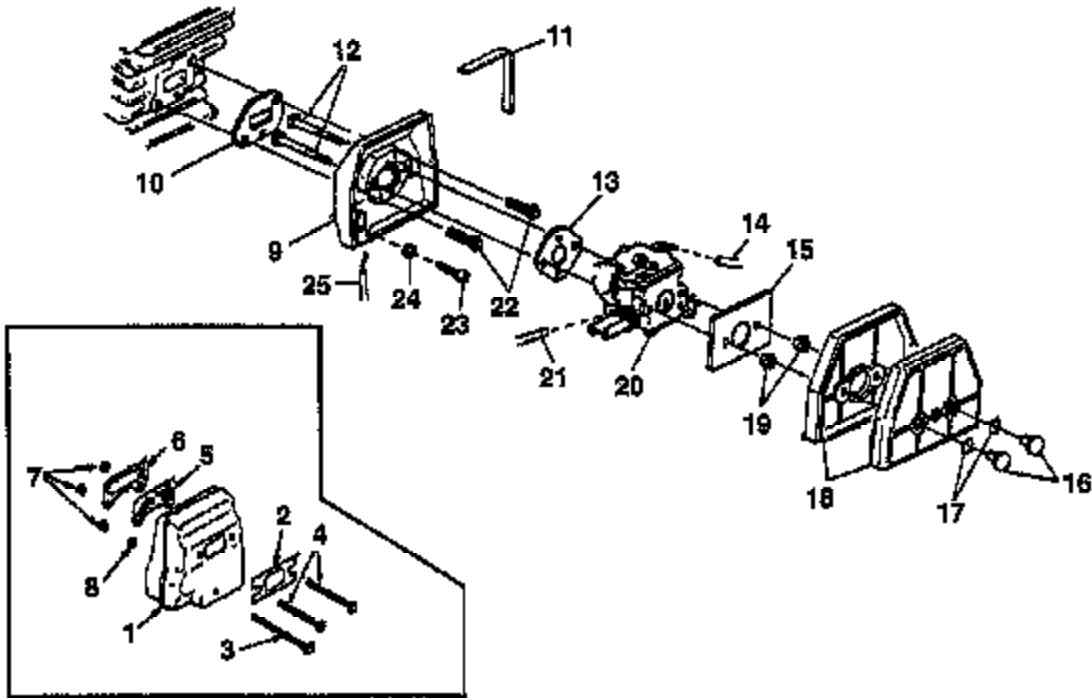
STARTER - IGNITION



NO.	PART NO.	DESCRIPTION	QTY.		
			2400	14400B	14400C
1	82548	SCREW-Thread Form (8-18 x 5/8")	4	4	4
2	82544	SCREW-Thread Form (8-16 x 2")	1	1	1
3	*A 04778 A	STARTER - COMPLETE	1	1	1
4	97899 01	ROPE, STARTER (48")	1	1	1
5	02264	GRIP, STARTER	1	1	1
6	A 97908	SPRING & CONTAINER	1	1	1
7	97768 B	PULLEY	1	1	1
8	94062	WASHER, RETAINING	1	1	1
9	82409	SCREW Plastite(10-14 x 5/8")	1	1	1
10	81255	NUT, LOCK	1	1	1
11	95479 A	WASHER, FLAT	1	1	1
12	A 06949	ROTOR & STARTER PAWLS	1	1	1
13	88052	SCREW, Sems Hex Hd. (10-24 x 7/8")	2	2	2
14	A 01821 A	IGNITION GROUND WIRE	1	1	1
15	96098	SLEEVE, Insulating	1	1	1
16	*A 01548	IGNITION MODULE	1	1	1
17	A 02597	SPARK PLUG BOOT KIT	1	1	1
18	A 01822 A	IGNITION WIRE	1	1	1
19	01802	SWITCH	1	1	1

Assembly
 Ensemble
 Baugätze
 Composés
 Conjuntos

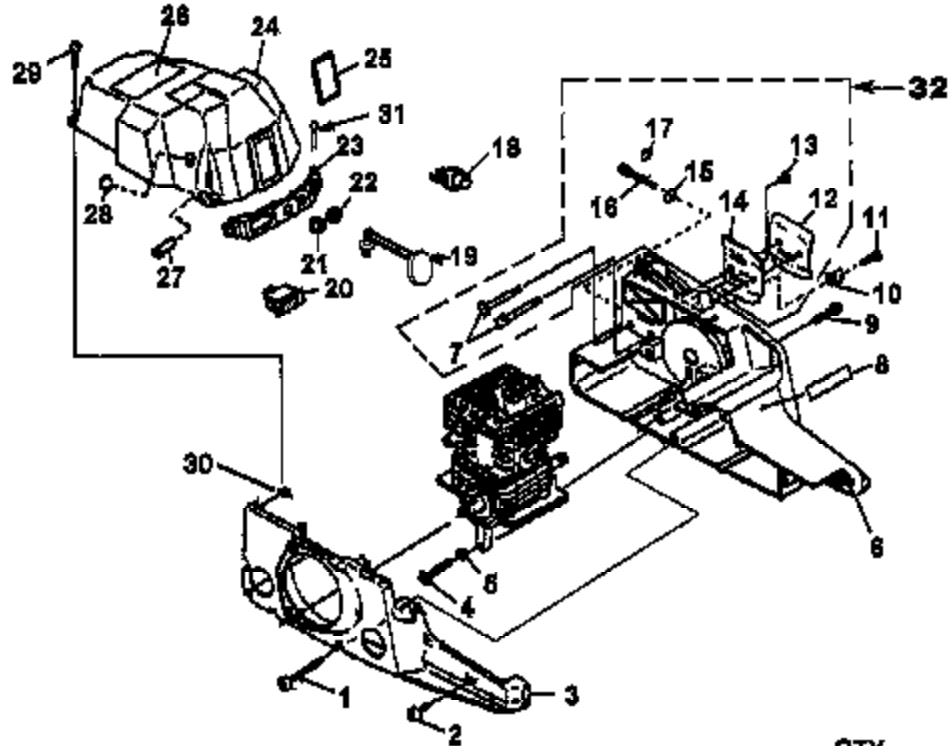
CARBURETOR - MUFFLER



NO.	PART NO.	DESCRIPTION	QTY.		
			Z4400	04400B	04400C
1	A 04414	MUFFLER - Complete	1	1	1
2	01543 B	GASKET-Muffler	1	1	1
3	02178	SCREW- Square Hd. (10-32 x 2 1/2)	1	1	1
4	02508	SCREW- Square Hd. (10-32 x 2 1/4)	2	2	2
5	01532	SCREEN-Spark Arrestor	1	1	1
6	01531 A	COVER- Exhaust	1	1	1
7	81208	NUT Locking Hex (10-32)	3	3	3
8	84009	WASHER- Flat (#12)	1	1	1
9	A 02583	SPACER-Carburetor	1	1	1
10	01029	GASKET- Carburetor Spacer	1	1	1
11	01823	FOAM- Adhesive	1	1	1
12	00906 A	SCREW- Carburetor Retainer	2	2	2
13	98338	GASKET-Carburetor	1	1	1
14	70310 38	TUBING-Rubber (9')	1	1	1
15	02896	RETAINER PLATE	1	1	1
16	01178	RETAINER NUT- Filter	2	2	2
17	02718	"O" RING	2	2	2
18	A 02582 A	AIR FILTER	1	1	1
19	81009	NUT- Hex (#8-32)	2	2	2
20	A 03628	CARBURETOR (Walbro WT-452)	1	1	1
21	70310 18	TUBING- Rubber (4 3/4')	1	1	1
22	82430	SCREW Mach. Hex Hd. (8-32 x 7/8")	2	2	2
23	82513	SCREW Thread Form (8-19 x 5/8")	1	1	1
24	84123	WASHER Flat (#6)	1	1	1
25	D0997 D	CABLE Throttle	1	1	1

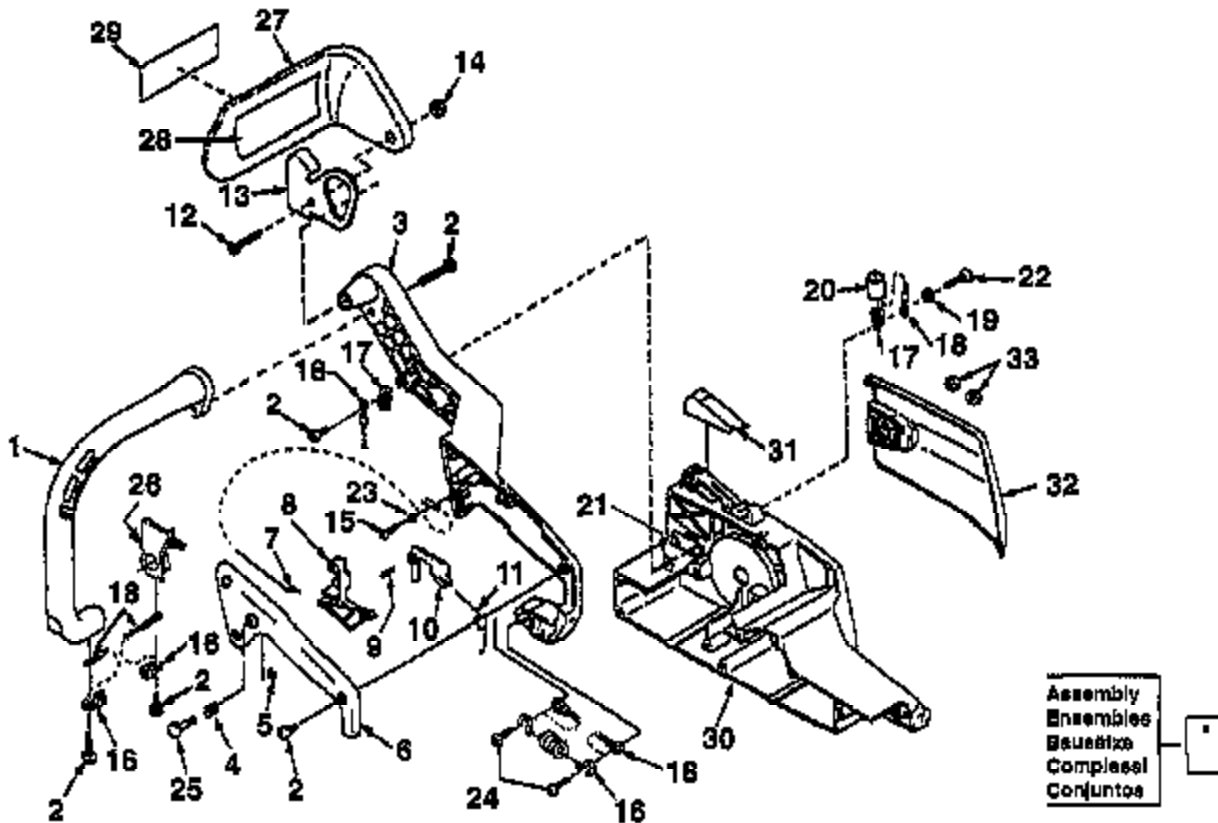
Assembly
 Ensembles
 Baugätze
 Complies
 Conjuntos

ENGINE HOUSING



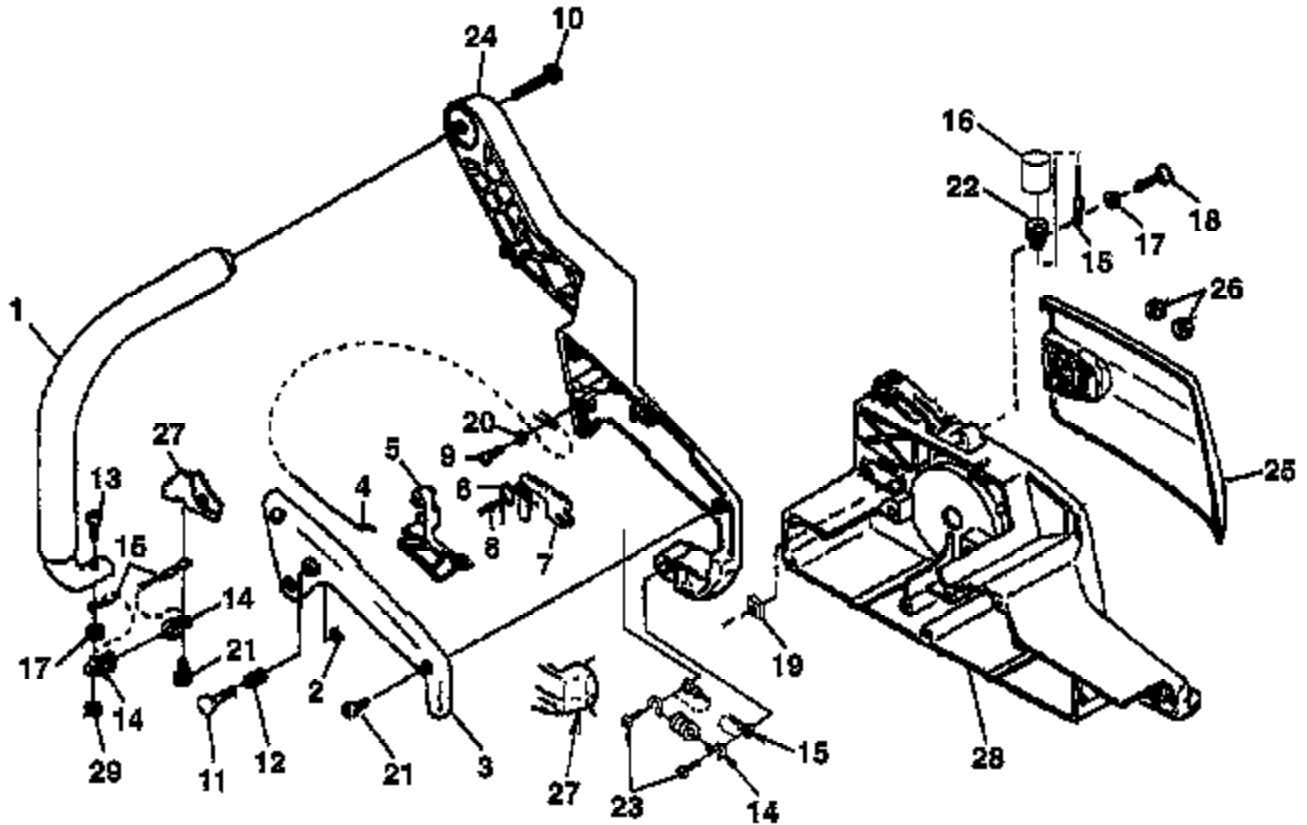
NO.	PART NO.	DESCRIPTION	QTY.		
			27408	01408	1408B
1	82645	SCREW- Thread Form (8-16 x 1 3/4")	3	3	3
2	82648	SCREW- Thread Form. (8-16 x 5/8")	4	4	4
3	00207 1B	HOUSING- Starter Side	1	1	1
4	82688	SCREW-Thread Form. (10-14 x 1 1/8")	1	1	1
5	89058	WASHER- Lock	1	1	1
6	*A 09720 B	HOUSING- Drive Side	1	1	1
7	03182	BOLT- Guide Bar	2	2	2
8	01805 A	DECAL- Panel	1	1	1
9	80864	SCREW-Hex Hd. (12-24 x 1")	2	2	2
10	98212	STOP- Chain	1	1	1
11	82837	SCREW- Thread Form (10-14 x 7/8")	1	1	1
12	01170	PLATE- Guide Bar (Outer)	1	1	1
13	88813	SCREW- Thread Form. (8-19 x 1/2")	1	1	1
14	98278	PLATE- Guide Bar (Inner)	1	1	1
15	85112 f	PIN- Adjusting	1	1	1
16	03139	SCREW- Guide Bar Adjusting	1	1	1
17	89589	RING- Snap	1	1	1
18	01188	BULB- Primer	1	1	1
19	08365	ROD- Choke	1	1	1
20	01802	SWITCH- Ign.	1	1	1
21	88889	BOOT- Throttle Cable	1	1	1
22	84862	GROMMET- Choke	1	1	1
23	01189	PANEL- Control	1	1	1
24	*A 02581 D	CYLINDER COVER	1	1	1
25	01173 A	SCREEN- Air Inlet	1	1	1
26	02606	LABEL- Warning	1	1	1
27	01172	GROMMET- Carburetor	1	1	1
28	01179 A	PLUG- Idle Speed	1	1	1
29	95792	SCREW- Round Hd. (10-24 x .710)	3	3	3
30	70810	NUT- Square (10-24)	3	3	3
31	88894	PIN- Cotter	1	1	1
32	A 08885	GUIDE BAR FASTENER KIT	1	1	1

HANDLE - z4400



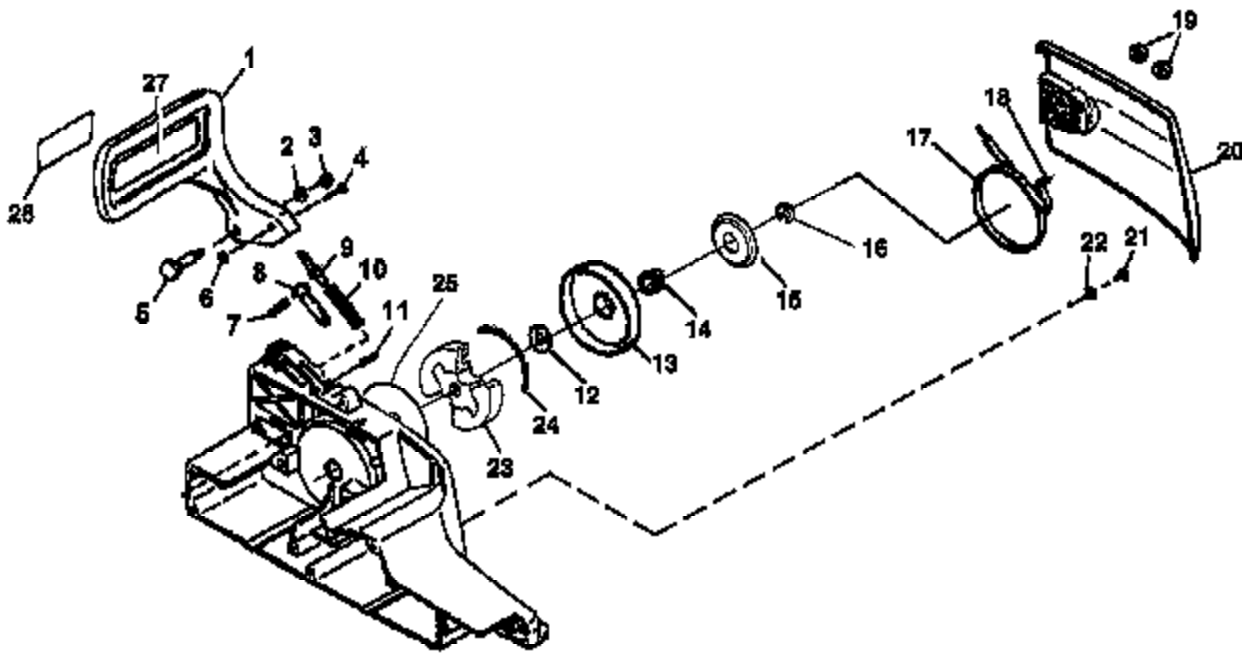
NO.	PART NO.	DESCRIPTION	QTY.
*	*A 07217	HANDLE KIT	1
1	*A 01178	HANDLE BAR	1
2	82548	SCREW, Thread Form (8-18 X 5/8")	7
3	07164	HANDLE-Rear	1
4	98020	SPRING-Compression	1
5	58409	RING, Retaining	1
8	00210 C	COVER-Rear Handle	1
7	00997 D	CABLE-Throttle	1
8	A 03908 A	TRIGGER & SWIVEL	1
9	70253	PIN-Dowel	1
10	83385 A	LOCK-Trigger	1
11	02316	SPRING-Trottle	1
12	80402 A	SCREW-Hex Cap	1
13	00258	MOUNTING BRACKET-Handguard	1
14	81258	NUT-Flange Hex	1
15	82513	SCREW, Thread Form (#8-18 X 7/8")	2
	*A 07214	ISOLATOR KIT	1
16	01166	SPRING-Extension	2
17	02819	SPRING-Extension	1
18	03683	RETAINER-Spring	3
19	84008	WASHER-Flat (#10)	1
20	01813	SLEEVE-Spring	1
21	70810	NUT-Square (#10-24)	1
22	82582	SCREW-Pan Hd. (#10-24 X 7/8")	1
23	84123	WASHER-Flat	2
24	82548	SCREW-Thread Form (8-16 X 1/2)	2
25	95871	PIN-Throttle Lock	1
26	00207 1B	HOUSING-Starter Side	1
27	*A 85088 A	HANDGUARD	1
28	02861	DECAL-Kickback	1
29	00317 A	DECAL-Kickback	1
30	A 03720 B	ENGINE HOUSING-(Drive Side)	1
31	00234	COVER-Snap On	1
32	A 00228 A	DRIVE CASE COVER	1
33	81198	NUT-Hex (5/16"-18)	2

HANDLES - d4400b - i4400b



NO.	PART NO.	DESCRIPTION	QTY.	
			ASSEMB	USED
	*A 07215	HANDLE KIT	1	1
1	A 03496	HANDLE BAR	1	1
2	58409	RING, RETAINING	1	1
3	00210 C	COVER, REAR HANDLE	1	1
4	00997 D	CABLE, THROTTLE	1	1
5	A 03608 A	TRIGGER, THROTTLE	1	1
6	02318	SPRING, THROTTLE	1	1
7	93985 A	LOCK, THROTTLE	1	1
8	70253	PIN, DOWEL	1	1
9	82513	SCREW, THREAD FORM (8-18 X 1/2")	1	1
10	80891	SCREW, HEX Hd (12-24 X 7/8")	1	1
11	95671	PIN, THROTTLE LOCK	1	1
12	95020	SPRING, COMPRESSION	1	1
13	86620	SCREW, TORX (10-24 X 1/2")	1	1
	*A 07214	ISOLATOR KIT	1	1
14	01188	SPRING, EXTENSION	2	2
15	03583	RETAINER, SPRING	3	3
16	01813	SLEEVE, SPRING	2	2
17	84008	WASHER, FLAT (#12)	2	2
18	82562	SCREW, PAN Hd. (10-24 X 7/8")	1	1
19	70810	NUT, SQUARE (# 10-24)	1	1
20	84123	WASHER, FLAT	1	1
21	82548	SCREW, THREAD FORM (8-16 X 5/8")	5	5
22	02813	SPRING, EXTENSION	1	1
23	82548	SCREW, THREAD FORM (8-16 X 1/2")	2	2
24	07183	HANDLE, REAR	1	1
25	A 00228 A	COVER, DRIVE CASE	1	1
26	81196	NUT, HEX	2	2
27	00207 1B	HSG., STARTER SIDE	1	1
28	A 03720 B	ENG. HSG. DRIVE SIDE	1	1
29	81281	NUT, HEX	1	1

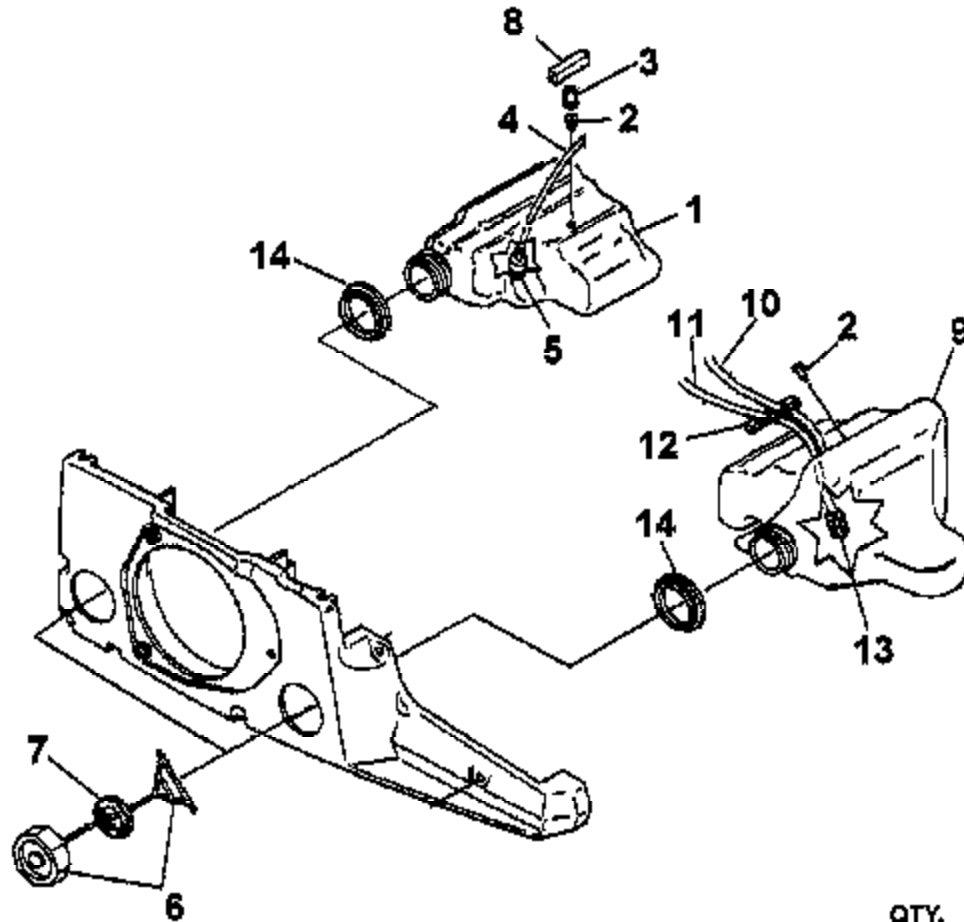
CLUTCH & CHAIN BRAKE



NO.	PART NO.	DESCRIPTION	QTY.		
			26480	04488	04489
1	A 08757	GUARD, HAND	1	1	1
2	83203	WASHER, BELLVILLE	1	1	1
3	88487	NUT - (M5)	1	1	1
4	88422 A	PIN	1	1	1
5	98481	SCREW, SHOULDER	1	1	1
6	01820	RING, RETAINER	1	1	1
7	98308	SPRING, COIL	1	1	1
8	A 99317 A	BRAKE LATCH ASSY.	1	1	1
9	A 00868 A	ADJUSTER, BRAKE	1	1	1
10	00890	SPRING, COMPRESSION	1	1	1
11	98466	PIN	1	1	1
12	85027	WASHER, THRUST	1	1	1
13	A 07274	SPROCKET & DRUM & BEARING	1	1	1
14	70277	BEARING, NEEDLE	1	1	1
15	08341	SHIELD, Dust	1	1	1
16	08948	E-Clip	1	1	1
17	A 08298 B	BRAKE BAND ASSY	1	1	1
18	08672	PIN, DOWEL	1	1	1
19	81198	NUT, HEX	2	2	2
20	A 00828 A	COVER, DRIVE CASE	1	1	1
21	82513	SCREW, THREAD FORM (#6)	1	1	1
22	01180	RETAINER, BRAKE BAND	1	1	1
23	A 06349	CLUTCH ASSY.	1	1	1
24	06348	SPRING, CLUTCH	1	1	1
25	93843	WASHER, FLAT	1	1	1
26	02551 A	LABEL, KICKBACK	1	1	1
27	02861	DECAL, SAFETY	1	1	1

Assembly
 Ensemble
 Baugteile
 Component
 Conjuntos

FUEL & OIL TANKS



NO.	PART NO.	DESCRIPTION	QTY.		
			24400	44400B	44400C
1	• A 06636	OIL TANK ASSY.	1	1	1
2	03134	VALVE-Check	1	1	1
3	03585	PIN-Spirol	1	1	1
4	70310 29	TUBING- Rubber (7 1/4")	1	1	1
5	A 68583	FILTER- Oil	1	1	1
6	A 00904 A	CAP- Tank (w/Retainer)	1	1	1
7	02762 A	GASKET-Fuel Cap	1	1	1
8	68443	FILTER- Oil Tank Valve	1	1	1
9	• A 06637	FUEL TANK ASSY.	1	1	1
2	03134	VALVE- Check	1	1	1
6	A 00904 A	CAP- Tank (w/Retainer)	1	1	1
7	02762 A	GASKET-Fuel Cap	1	1	1
10	70310 21	TUBING-Rubber (5 1/4")	1	1	1
11	70310 36	TUBING- Rubber (9")	1	1	1
12	02952	FILTER- Foam	1	1	1
13	49422	FILTER- Fuel	1	1	1
14	00893	SAWDUST SEAL	2	2	2

Assembly
 Ensembles
 Baugteile
 Componentes
 Conjuntos

**ACCESSORIES
ACCESSOIRES
ZUBEHÖR
ACCESSORI
ACCESORIOS**

BUMPER SPIKE KIT _____ A-02177	COMPRESSION TESTER _____ 94194
Jeu de crampon d'amortisseur	Appareil d'essai de compression
Stoßfänger-Spikesatz	Verdichtungs-Prüfgerät
Kit della punta del paraurti	Tester a compressione
Juego de punta del amortiguador	Medidor de compresión
RUBBER TUBING (10') _____ 70310-99	CARBURETOR REPAIR TOOL _____ 17769
Tubes en caoutchouc (3,05 m)	Outil de réparation de carburateur
Gummrohr (3,05 m)	Vergasers-Reparaturwerkzeug
Dotto di gomma (3,05 m)	Atrezzo di riparazione del carburatore
Tubo de caucho (3,05 m)	Herramienta de reparación del carburador
GREASE- Multi-Purpose (Sprocket bearing-PT guide bar) _____ 18463	SHIM (.0125") _____ 24306
Grasse universelle (Pilier de pignon-PT - lame-guide)	Cale (0,31mm)
Mahrschweck-Schmiermittel (Kettenradlager - PT - Führungsschiene)	Distanzstück (0,31mm)
Grasso multiscopo (Cuscinetto della ruota dentata - PT - barra di guida)	Zeppa (0,31mm)
Grasa de uso general (Cojinete de la rueda dentada - PT - barra guía)	Cales (0,31mm)
STARTING ROPE (250 ft. Reel) _____ 98052-A	DIGITAL TACHOMETER _____ 18416
Cordon de lanouir (76 m bobine)	Compte-tours numérique
Startersail (76 m Spule)	Digital-Drehzahlmesser
Corda d'avviamento (bobina da 76 m)	Tachometro digitale
Cuerda de arranque (carrete de 76 m)	Tacómetro digital
SAFE-T-TIP® _____ A 78776 B	CLUTCH ASSEMBLY TOOL _____ 16080
SAFE-T-TIP®	Outil de montage d'embrayage
SAFE-T-TIP®	Kupplungsassemblierwerkzeug
SAFE-T-TIP®	Atrezzo del gruppo frizione
SAFE-T-TIP®	Herramienta de armado del embrague
GUIDE BAR, (power tip) (16") _____ PT-16321-H6	SEALANT SILICON _____ 24823
Lame guide, (Extrémité motrice) (40,84cm)	Matériau d'étanchéité au silicone
Führungsschiene, (Antriebspitze) (40,84cm)	Silicon-Dichtungsmasse
Lama, (Punta di potenza) (40,84cm)	Sigillo al silicone
Barra guía, (Punta de potencia) (40,84cm)	Bellador de sílice
GUIDE BAR (power tip) (18") _____ PT-18321-H6	WRENCH (combination) _____ A-24824
Lame guide, (Extrémité motrice) (45,72cm)	Cle combinée
Führungsschiene, (Antriebspitze) (45,72cm)	Schraubenschlüssel Kombination
Lama, (Punta di potenza) (45,72cm)	Clieve combinata
Barra guía, (Punta de potencia) (45,72cm)	Llave combinada
GUIDE BAR, (power tip) (20") _____ PT-20321-H6	PULLER- Magneto Rotor _____ A-24747-A
Lame guide, (Extrémité motrice) (50,80cm)	Extracteur, rotor magnéto
Führungsschiene, (Antriebspitze) (50,80cm)	Abziehwerkzeug-Magnet rotor
Lama, (Punta di potenza) (50,80cm)	Rotore d'estrazione a magneto
Barra guía, (Punta de potencia) (50,80cm)	Extractor-rotor de magneto
GUIDE BAR, (sprocket tip) (16") _____ SP-16321-H6	T-25 TORX DRIVE BIT _____ 24932-02
Lame guide, (Extrémité à pignon) (40,84cm)	Foret torx T-25
Führungsschiene, (Kettenradspitze) (40,84cm)	T-25 Torx-Antriebsbit
Lama, (Punta dentata) (40,84cm)	Punta Torx Drive T-25
Barra guía, (Punta de rueda dentada) (40,84cm)	Brocs de empújia T-25 Torx
GUIDE BAR, (sprocket tip) (20") _____ SP-20321-H6	SHIM (0.015" AIR GAP) _____ 22465
Lame guide, (Extrémité à pignon) (50,80cm)	Cale (écart de 0,38 mm)
Führungsschiene, (Kettenradspitze) (50,80cm)	Distanzschleibe (0,38 mm Luftspalt)
Lama, (Punta dentata) (50,80cm)	Spessore (spinterometro 0,38 mm)
Barra guía, (Punta de rueda dentada) (50,80cm)	Suplemento (espacio de 0,38 mm)
	TESTER (Spark Plug) _____ GP-20322-B
	Appareil de contrôle (bougie)
	Prüfgerät (Zündkerze)
	Tester (candela)
	Probador de bujía
	CLUTCH SPANNER _____ A-01162
	Clé à embrayage
	Kupplungs-Gabelschlüssel
	Chiave della frizione
	Llave para embrague
	CHAIN (32-MD50-67) (16") _____ D1-L7267-AH
	Chaîne (32-MD50-67) (40,84cm)
	Kette (32-MD50-67) (40,84cm)
	Cadena (32-MD50-67) (40,84cm)
	Cadena (32-MD50-67) (40,84cm)
	CHAIN (32-MD50-73) (18") _____ D1-L7273-AH
	Chaîne (32-MD50-73) (45,72cm)
	Kette (32-MD50-73) (45,72cm)
	Cadena (32-MD50-73) (45,72cm)
	Cadena (32-MD50-73) (45,72cm)
	CHAIN (32-MD50-79) (20") _____ D1-L7279-AH
	Chaîne (32-MD50-79) (50,80cm)
	Kette (32-MD50-79) (50,80cm)
	Cadena (32-MD50-79) (50,80cm)
	Cadena (32-MD50-79) (50,80cm)

NOTES NOTES NOTIZEN NOTAS NOTE

CUSTOMER ASSISTANCE
 FOR THE LOCATION OF YOUR NEAREST HOMELITE SERVICING DEALER
 IN THE UNITED STATES, PUERTO RICO, AND THE VIRGIN ISLANDS,
CALL: 1-800-242-4672

HEADQUARTERS
 Homelite, Inc.
 P.O. BOX 7047
CHARLOTTE, N.C. 28241

OVERSEAS OFFICES

NETHERLANDS

Homelite Netherlands B.V.
 A Deere & Company Affiliate
 Haverstraat 24
 2183 GB Nieuw Vennep
 The Netherlands

<p style="text-align: center;">FRANCE</p> <p style="text-align: center;">Homelite Atlantia SARL Groupe Deere & Co. BP 7011 95060 Cergy Pontoise Cedex France</p>	<p style="text-align: center;">AUSTRALIA</p> <p style="text-align: center;">Homelite Pacific Ltd. A Deere & Company Affiliate ACN 006 693 538 94 Rushdale Street P.O. Box 555 MDA Australia</p>
---	---

CANADIAN OFFICES

Homelite Canada Limited
 Homelite Canada Limitée

A Deere & Company Affiliate/
 Une Filiale de Deere & Company
 1850-55eth Avenue
 Lachine, Québec, Canada H8T 3J5
 1-800-363-5716

UNIT 212-214, 590 Ebury Place
 New Westminster, B.C. V3M 6K7
 1-800-867-3128

20-D Voyager Court South
 Etobicoke, Ontario M9W 5M7
 1-800-465-2249

Homelite inc.
 A Subsidiary of Deere & Company

065912