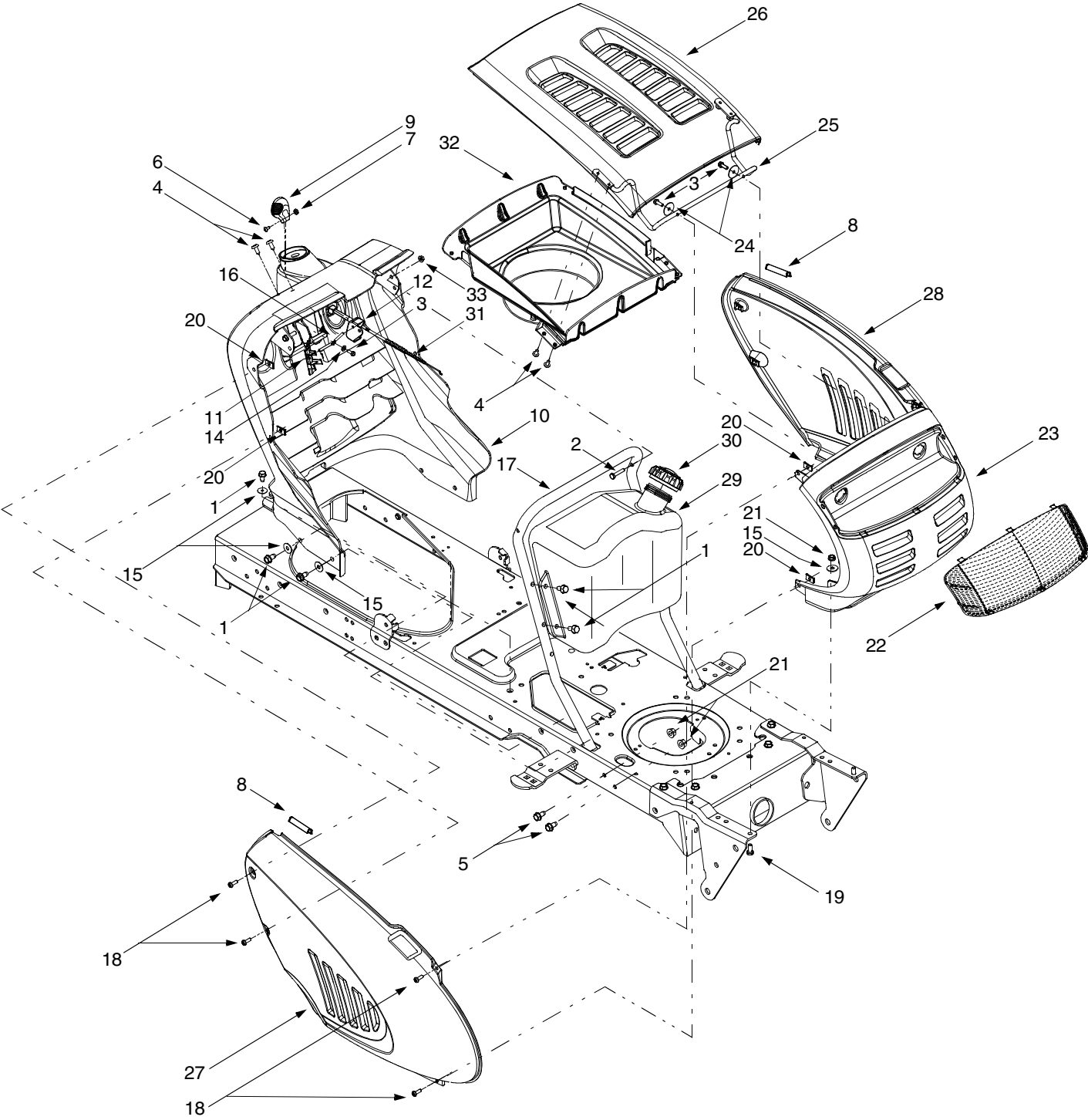


# Model 609



# Tractor Body

REF. NO.	PART NO.	DESCRIPTION
1	710-0604A	Self-tapping Screw, 5/16-18 x .625
2	710-0788	Self-tapping Screw, 1/4-20 x 1.0
3	710-0895	Self-tapping Screw, 1/4-15 x .75
4	710-1017	Torx Self-tapping Screw, 5/16-18 x .625
5	710-1238	Screw, 5/16-18 x .875 (Grade 5)
6	710-3217	Torx Screw, #8-32 x .375
7	712-0142	Hex Nut, 8-32
8	731-0511-5	Five-inch Trim Strip
9	731-1857	Throttle Control Lever
10	731-2122	Dash Panel
11	731-2228	Plastic Plug
12	731-2227	Parking Brake Button
13	736-0119	Lock Washer, 5/16
14	736-0142	Flat Washer, .281 x .5 x .063
15	736-3078	Flat Washer, .349 x 1.0 x .063
16	747-1196	Pivot Rod
17	749-1087	Dash Support Tube
18	710-0924	Pan Phillips Screw, 1/4-20 x .75
19	710-3008	Hex Cap Screw, 5/16-18 x .75
20	712-0292	U-type Speed Nut, 1/4-20
21	712-3004A	Flange Lock Nut, 5/16-18
22	731-2118	Lens, 9-style
23	731-2119	Grille, 9-style
24	736-0211	Flat Washer, .285 x 1.25 x .08
25	747-1162	Hood Hinge Rod
26	783-0783	Hood, 9-style
27	783-0784	RH Side Pane, 9-style
28	783-0785	LH Side Panel, 9-style
29	751-0659	Two-gallon Fuel Tank (shown)
	751-0658A	Three-gallon Fuel Tank
30	751-0603	Fuel Cap (Fits Either Tank)
31	746-1085	Choke Knob/Cable Assembly† (Units w/ B&S Intek Twin)
	746-1088	Choke Knob/Cable Assembly† (Units w/ Kohler Single)
32	731-2269	Hood Plenum (Units w/ Kohler Single)‡
	731-2270	Hood Plenum (Units w/ B&S Intek Twin)‡
33	712-3027	Hex Flange Lock Nut, 1/4-20

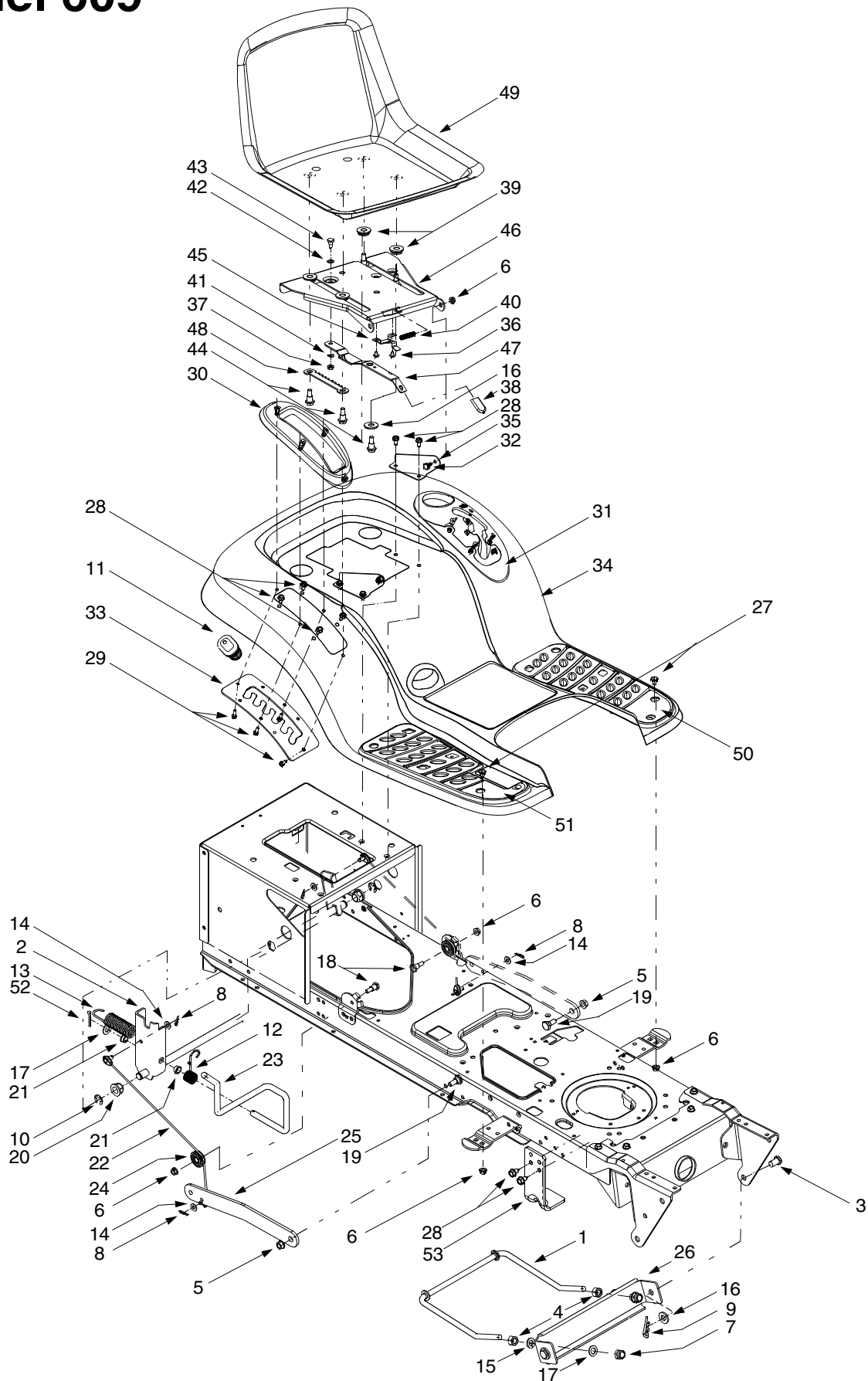
†Units with B&S Intek Single engines have NO choke knob/cable. The choke is activated with the throttle control.

‡Units with B&S Intek Single engines have NO hood plenum.

**NOTE:** For **painted parts**, please refer to the list of color codes below. Please add the applicable color code, wherever needed, to the part number to order a replacement part. For instance, if a part numbered 700-xxxx is painted Powder Black, the part number to order would be 700-xxxx-0637.

MTD Red: 0638  
Oyster Gray: 0662  
Powder Black: 0637

## Model 609



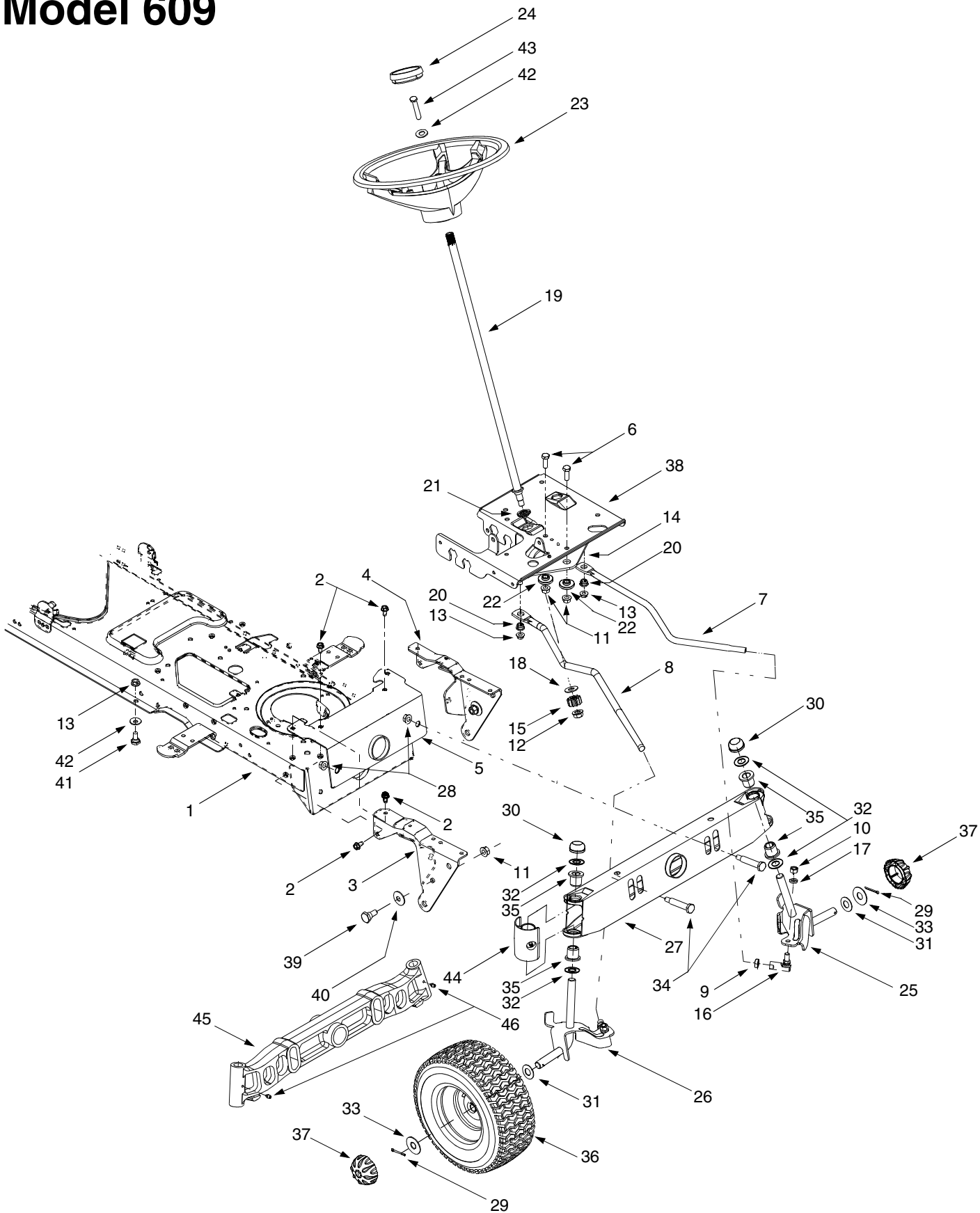
# Lift Assembly

REF. NO.	PART NO.	DESCRIPTION	REF. NO.	PART NO.	DESCRIPTION
1	747-1130	Deck Stabilizer Rod	28	710-0604A	Self-tapping Screw, 5/16-18 x .625
2	683-0197	Lift Shaft Assembly	29	710-0895	Self-tapping Screw, 1/4-15 x .75
3	711-0332	Clevis Pin, .5 x .78	30	731-1990	Lift Lever Cover
4	712-0206	Hex Nut, 1/2-13	31	731-2104A	Shift Lever Cover w/ Cup Holder
5	712-0431	Flange Lock Nut, 3/8-16	32	738-0155	Shoulder Screw, .437 x 1.62
6	712-3004A	Flange Lock Nut, 5/16-18	33	783-0677	Lift Adjustment Bracket
7	712-3083	Hex Nut, 1/2-13	34	783-0685A	Fender
8	714-0104	Internal Cotter Pin	35	783-0715	Seat Mounting Bracket
9	714-0145	Internal Cotter Pin	36	710-1268	Screw, #10-16 x .375
10	716-0106	E-ring	37	712-3027	Hex Flange Lock Nut, 1/4-20
11	720-0311	Handle Grip	38	720-0309A	Seat Adjuster Grip
12	732-0874	Torsion Spring	39	731-1989	Spacer
13	732-0934	Lift-assist Spring, 1.15 x 5.99 (Found on Units w/ 46-inch Decks Only)	40	732-0499	Compression Spring, .41 x 1.5
14	736-0275	Flat Washer, 5/16	41	736-0175	Spring Washer, .265 x .562 x .025
15	736-0921	Lock Washer, 1/2	42	736-0204	Flat Washer, .344 x .62 x .03
16	736-3019	Flat Washer, .31 x 1.062 x .134	43	738-0137A	Shoulder Screw, .340 x .285, 1/4-20
17	736-3084	Flat Washer, .51 x 1.12 x .06	44	738-1007	Shoulder Screw, .50 x .50, 3/8-16
18	738-0138	Hex Cap Screw, 5/16-18 x .62	45	783-0611	Seat Stop
19	738-0143	Shoulder Screw, 3/8-16	46	783-0738	Seat Pivot Bracket
20	741-0225	Hex Flange Bearing	47	783-0739	Seat Adjustment lever
21	741-0715	Snap Flange Bearing	48	783-0753	Seat Adjustment Selector
22	746-0968	Lift Cable, 16.16	49	757-0365A	Seat, Radiant Yellow, Medium Back
23	747-1111	Lift Handle		757-0372	Seat, Radiant Yellow, High Back w/ Holes
24	756-1154	Roller Pulley	50	735-0657	LH Foot Pad
25	783-0678	Arm Lift	51	735-0656	RH Foot Pad
26	783-0720A	Deck Stabilizer Bracket		726-3046	Foot Pad Clips (Not Shown)
27	710-0260	Carriage Bolt, 5/16 x .62	52	714-0111	Cotter Pin
			53	783-0891A	Deck Stop

**NOTE:** For **painted parts**, please refer to the list of color codes below. Please add the applicable color code, wherever needed, to the part number to order a replacement part. For instance, if a part numbered 700-xxxx is painted Powder Black, the part number to order would be 700-xxxx-0637.

MTD Red: 0638  
Oyster Gray: 0662  
Powder Black: 0637

# Model 609



# Steering Assembly

REF. NO.	PART NO.	DESCRIPTION	REF. NO.	PART NO.	DESCRIPTION
1	683-0304	Lower Frame Assembly	28	712-0431	Flange Lock Nut, 3/8-16
2	710-0604A	Self-tapping Screw, 16-18 x .625	29	714-0470	Cotter Pin
3	783-0726A	RH Pivot Support Bracket	30	726-0214	Push Cap, .625
4	783-0727	LH Pivot Support Bracket		726-0341	Push Cap, .750
5	783-0728	Pivot Bar Bracket	31	736-0162	Flat Washer, .64 x 1.0 x .12
6	710-0514	Hex Cap Screw, 3/8-16 x 1 (Grade 5)	32	736-0187	Flat Washer, .64 x 1.24 x .06
7	711-1409A	LH Drag Link		736-0316	Flat Washer, .78 x 1.59 x .06
8	711-1408	RH Drag Link	33	736-0285	Flat Washer, .635 x 1.589 x .06
9	712-0240	Jam Nut, 7/16-20 (Grade 2)	34	738-1011	Shoulder Screw, .5 x 2.2, 3/8-16
10	712-0241	Hex Nut, 3/8-24 (Grade 2)	35	741-0659	Flange Bearing, .632 ID x .937 OD
11	712-0431	Flange Lock Nut, 3/8-16		741-0660	Flange Bearing, .760 ID x .937 OD
12	712-0459	Flange Lock Nut, 7/16-20	36	634-0105A	Wheel Assembly Complete, 15 x 6 x 6
13	712-3004A	Flange Lock Nut, 5/16-18		634-0172	Rim Only
14	717-1550A	Steering Gear, 11/90 Ratio		734-0255	Air Valve (Not Shown)
15	717-1554	Steering Pinion Gear		734-1731	Tire Only, Square Shoulder
16	723-0448A	Ball Joint, 7/16-20		741-0487A	Plastic Flange (Not Shown)
17	736-0169	Lock Washer, 3/8		741-0706	Plastic Flange w/ Fitting (Not Shown)
18	736-3084	Flat Washer, .51 x 1.12 x .06	37	734-2290	Hub Cap
19	738-1001	Steering Shaft, .625 OD x 24.4	38	783-0653C	Steering Support Bracket
20	741-0475	Plastic Bushing, .38 ID	39	738-0143	Shoulder Screw, 3/8-16
21	741-0656	Hex Flange Bearing, 5/8	40	736-0331	Bell Washer, .39 x 1.13 x .062
22	738-0372	Shoulder Spacer, .38 ID	41	738-0140	Shoulder Screw, .435 x .178, 5/16 x .56
23	631-0027	Steering Wheel	42	736-0242	Bell Washer, .34 x .872
24	731-0220	Steering Wheel Cap	43	710-0643	Hex Bolt, 5/16-18 X 1
25	638-0019	LH Axle Assembly, .625 Diameter	44	731-1291A	Pivot Bar End Cap
	638-0021	LH Axle Assembly, .625 / .750 Diameter	45	719-0525B	Cast Iron Pivot Bar (if so equipped)
26	638-0020	RH Axle Assembly, .625 Diameter	46	737-3000	Lube Fitting, 3/16 (if so equipped)
	638-0022	RH Axle Assembly, .625 / .750 Diameter	47	710-1260A	Self-tapping Screw, 5/16-18 x .750
27	683-0128A	Pivot Bar			

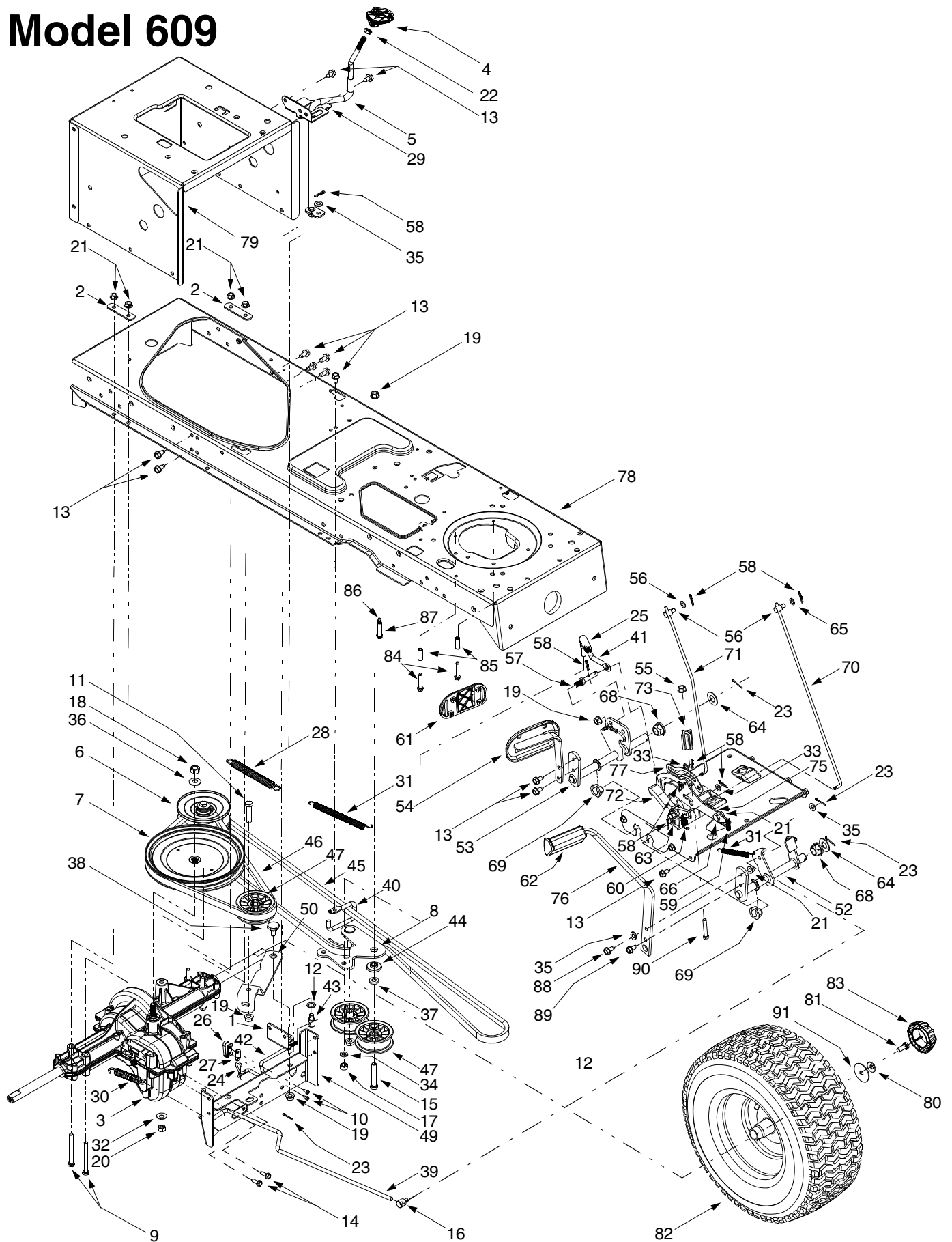
**NOTE:** Units equipped with a 42-inch deck have axles with a .625 diameter.

Units equipped with a 46-inch deck have axles with a .625 / .750 diameter.

**NOTE:** For **painted parts**, please refer to the list of color codes below. Please add the applicable color code, wherever needed, to the part number to order a replacement part. For instance, if a part numbered 700-xxxx is painted Powder Black, the part number to order would be 700-xxxx-0637.

MTD Red: 0638  
Oyster Gray: 0662  
Powder Black: 0637

# Model 609

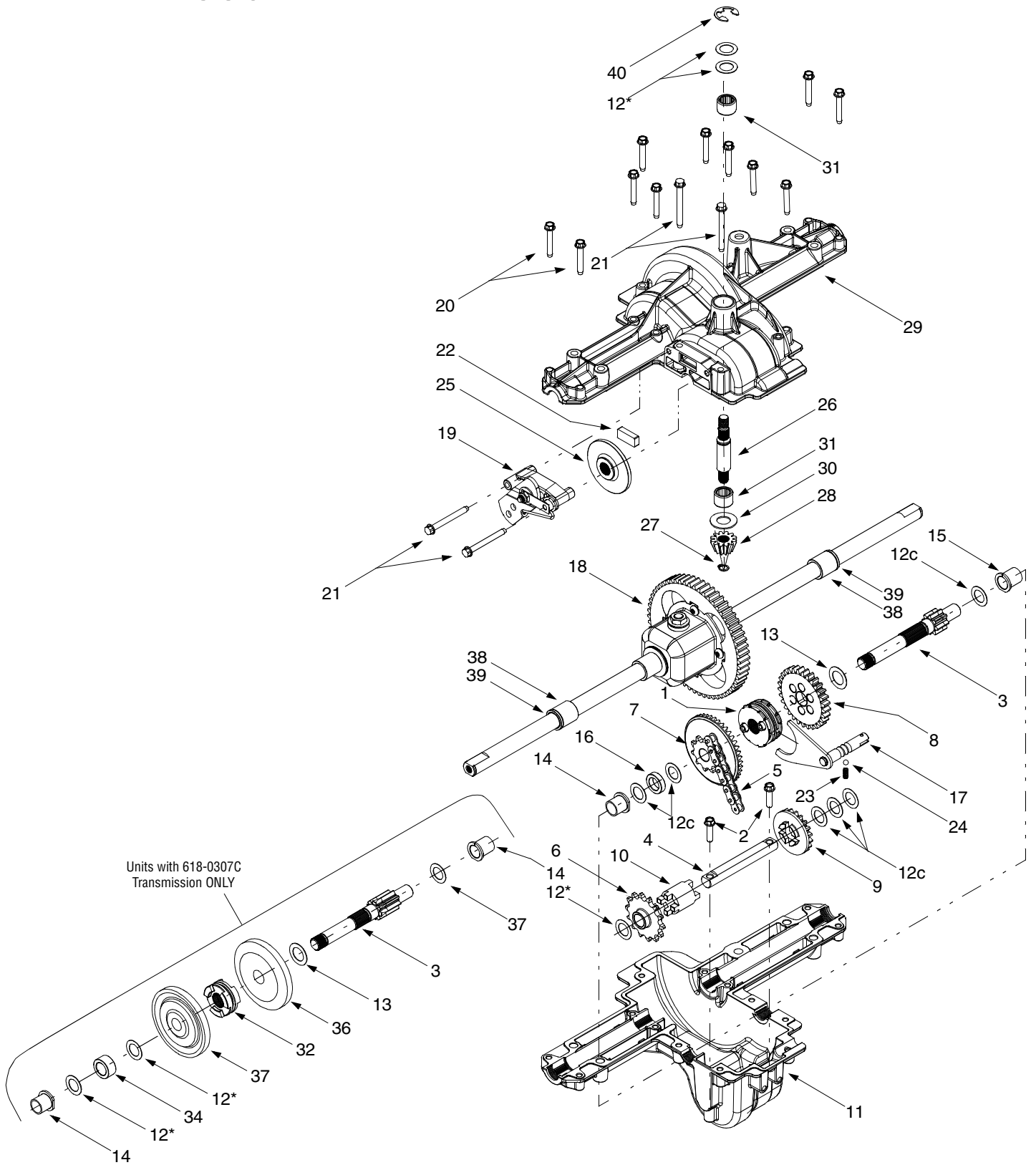


# Drive System

REF. NO.	PART NO.	DESCRIPTION	REF. NO.	PART NO.	DESCRIPTION
1	783-1015	Shift Lever Support	49	783-0667A	Transmission Torque Bracket
2	17840	Transaxle Mounting Bracket	50	783-0669	Idler Bracket
3	618-0307C	Single-speed Transmission Assembly	51	783-0714	Adjustable Shift Bracket
4	631-0009	Shifter Knob	52	647-0031	Brake Control Assembly
5	647-0045	Shift Lever	53	647-0032	Speed Control Assembly
6	656-0048	Variable-speed Pulley Assembly	54	683-0266	Drive Pedal Assembly
7	656-0051A	Transmission Pulley, 8.5 x .5-36	55	712-0431	Flange Lock Nut, 3/8-16
8	683-0251	Double-idler Bracket	56	711-0736	Ferrule, 1/4-20
9	710-0189	Hex Cap Screw, 5/16-18 x 3	57	711-1363	Pin, 3/8-16 x 2.43
10	710-0227	Self-tapping Screw, #8-18 x .5	58	714-0104	Cotter Pin
11	710-0347	Hex Cap Screw, 3/8-16 x 1.75	59	732-0437	Compression Spring, .34 OD x 1.0
12	736-0272	Flat Washer, .51 x 1.0 x .060	60	732-0955	Extension Spring, .50 OD x 1.41
13	710-0604A	Self-tapping Screw, 5/16-18 x .625	61	735-0662	Drive Pedal Pad
14	710-0642	Self-tapping Screw, 1/4-20 x .75	62	735-3049	Brake Pedal Pad
15	710-3011	Hex Cap Screw, 3/8-16 x 2.25	63	736-0140	Flat Washer, .281 x .5 x .0625
16	711-0677	Ferrule, 5/16-18	64	736-0187	Flat Washer, .64 x 1.24 x .06
17	712-0241	Hex Nut, 3/8-24	65	736-0204	Flat Washer, .344 x .062 x .03
18	712-0378	Hex Nut, 7/16-20	66	738-0155	Shoulder Screw, .437 x 1.62
19	712-0431	Flange Lock Nut, 3/8-16	67	738-0507B	Shoulder Screw, .5 x .434
20	712-0798	Hex Nut, 3/8-16	68	741-0225	Hex Flange Bearing
21	712-3004A	Flange Lock Nut, 5/16-18	69	741-3065A	Split Hex Flange Bearing
22	712-3008	Jam Nut, 3/8-16	70	747-1137	Cruise Control Rod
23	714-0111	Cotter Pin	71	747-1138	Brake Lock Control Rod
24	714-0149B	Internal Cotter Pin	72	748-0413	Cruise Latch
25	723-3018	Ball Joint	73	748-0415A	Spacer, 5/16 x 1.54
26	725-1644	Short Spring Switch	74	783-0653B	Steering Support Bracket
27	726-0320	Insulator Nut Plate	75	783-0732	Drive Lockout Bracket
28	732-0384	Extension Spring, .62 Dia. x 6.12	76	783-0773	Brake Pedal
29	732-0525	Compression Spring Clip	77	783-0780	Neutral Return Bracket
30	732-0716	Extension Spring, .59 OD x 4	78	683-0304	Lower Frame Assembly
31	732-0963	Extension Spring, .50 Dia. x 6.37 (hooks to flange, 783-0650, in frame)	79	783-1031	Hitch Plate
32	736-0105	Bell Washer, .401 x .87 x .063	80	736-0242	Bell Washer, .34 x .872
33	736-0140	Flat Washer, .385 x .62 x .063	81	710-0627	Hex Cap Screw, 5/16-24 x .75
34	736-0169	Lock Washer, 3/8	82	634-0177	Wheel Assembly Complete, 20 x 10 x 8
35	736-0275	Flat Washer, 5/16		634-0104	Wheel Assembly Complete, 20 x 8 x 8
36	736-0407	Bell Washer, .45 x 1.0 x .602		634-0077	Rim Only
37	736-3010	Flat Washer, .407 x .812 x .135		734-0255	Air Valve (Not Shown)
38	738-0322	Shoulder Screw, .625 x .217		734-1873	Tire Only, 20 x 10 x 8, Square Shoulder
39	747-1122	Brake Rod		734-1730	Tire Only, 20 x 8 x 8, Square Shoulder
40	747-1123A	Belt Guard	83	734-2290	Hub Cap
41	747-1127	Idler Adjustment Rod, 3/8	84	710-0778	Self-tapping Screw, 1/4-20 x 1.5
42	747-1156	Shift Rod	85	750-0556	Spacer
43	711-0736	Adjustment Ferrule, 1/4-20 x 1.0	86	710-1026	Self-tapping Screw, 1/4-20 x 1.75
44	748-0372	Shoulder Spacer, .38 ID	87	750-0768	Spacer
45	754-0467	Variable-speed Belt	88	710-1260A	Self-tapping Screw, 5/16-18 x .75
46	754-0468	Drive Belt	89	710-1650	Self-tapping Screw, 5/16-18 x .875
47	756-0981	Flat Idler, 2.75 OD	90	710-0859	Hex Cap Screw, 3/8-16 x 2.5
48	783-0637	Shift Lever Support	91	736-0430	Flat Washer, .350 x 1.59 x .062



# Model 609



# Single-speed Transmission

REF. NO.	PART NO.	DESCRIPTION
1	618-0318	Clutch Collar†
2	710-0788	Self-tapping Screw, 1/4-20 x 1.0
3	711-1274	Drive Shaft
4	711-1280	Counter Shaft
5	713-0474	22-link Chain, #420
6	713-0478	14-tooth Sprocket
7	717-1422	Sprocket Bevel Gear, 42/10
8	717-1565	29-tooth Spur Gear
9	717-1569	20-tooth Spur Gear
10	718-0652	Counter Shaft Coupling
11	719-0394	Lower Housing
12a	736-0336	Flat Washer, 5/8 x 1.0 x .030*
12b	736-0337	Flat Washer, 5/8 x 1.0 x .040*
12c	736-0349	Flat Washer, 5/8 x 1.0 x .020*
13	736-0519	Flat Washer, .70 x 1.125 x .031
14	741-0336	Flange Bearing, 5/8 x 3/4 x 3/4
15	741-0337	Flange Bearing, 5/8 x 3/4 x 15/16
16	750-1238	Spacer, .635 x 1.0 x .27
17	611-0112	Detent Shaft Assembly†
	611-0133	Detent Shaft Assembly‡
18	618-0369	Differential Assembly†
	618-0424	Differential Assembly‡
19	661-0006	Brake Assembly
20	710-1325	Self-tapping Screw, 1/4-20 x 1.625
21	710-1206	Self-tapping Screw, 1/4-20 x 2.375
22	717-0678	Brake Pad
23	732-0863	Compression Spring
24	741-0862	Detent Ball
25	761-0202	Brake Disc
26	711-1331	Input Shaft†
	711-1430	Input Shaft‡
27	716-0385	Retaining Ring, .394†
	716-0108	Retaining Ring, .437‡
28	717-1571	12-tooth Bevel Pinion†
	717-1464	14-tooth Bevel Pinion‡
29	719-0391A	Upper Housing
30	736-0335	Thrust Washer, .63 x 1.24 x .062†
	736-0723	Thrust Washer, .635 x 1.25 x .042‡
31	741-0525	Needle Bearing, .625 x .875
32	718-0228	Clutch Collar†
33	711-1431	Drive Shaft‡
34	750-1234	Spacer, .633 x 1.0 x .513
35	717-1362	42-tooth Bevel Gear‡
36	717-1363	42-tooth Bevel Gear†
37	736-0495	Thrust Washer, 1.0 x .632 x .0
38	741-0340	Sleeve Bearing, .75 x 1.0 x 1.0
39	721-0338	Seal, .75 x 1.0 x .125
40	716-0231	E-ring, .75

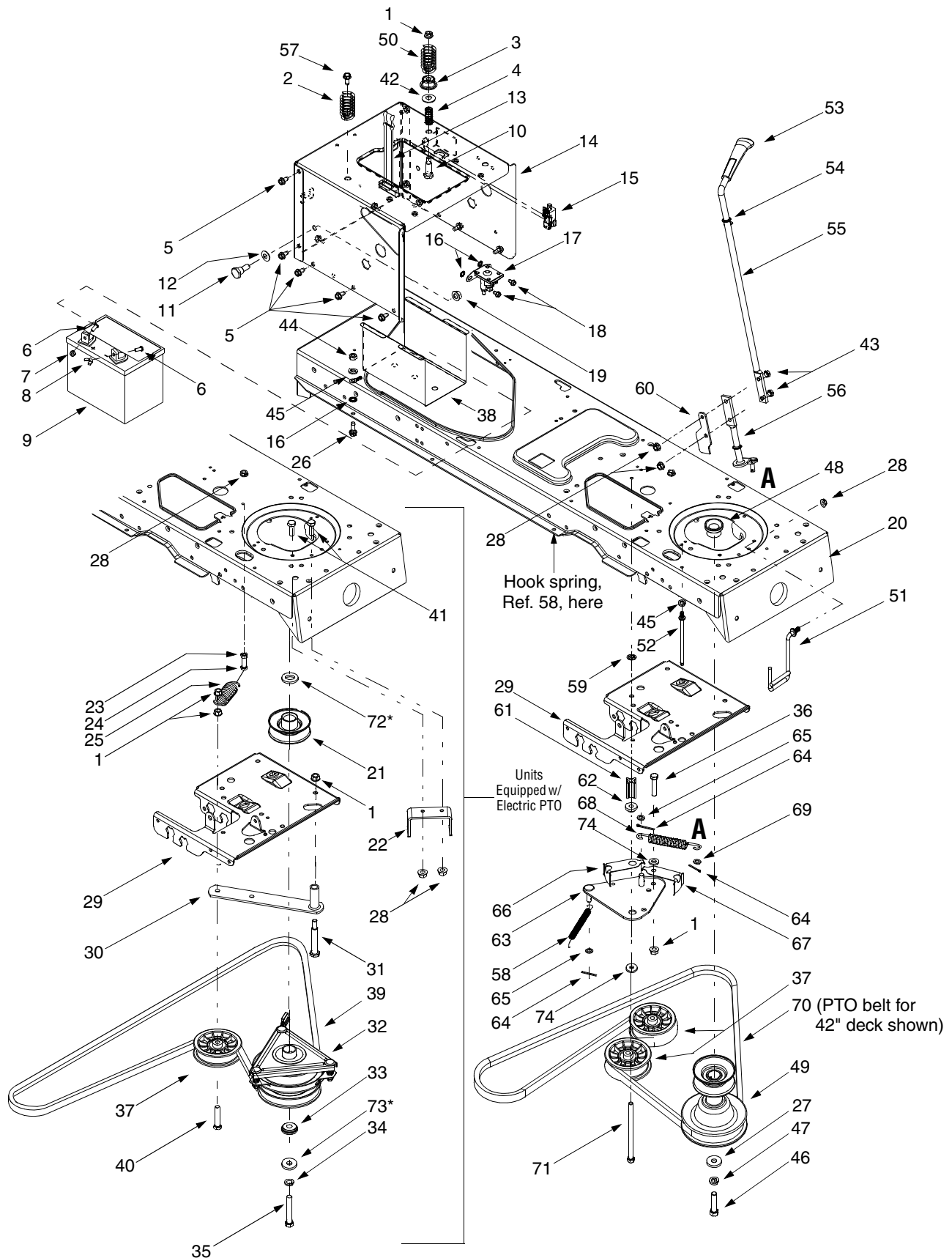
\*If rebuilding transmission for any reason, use applicable flat washer (12a, 12b, or 12c) in this application allowing proper end play as instructed in MTD's Service Manual.

**IMPORTANT:** One of two different transmissions may be found on your lawn tractor (618-0307B & 618-0307C). Refer to the model plate found on the rear right portion of the transmission's lower housing before ordering replacement service parts.

†Used on Single-speed transmission 618-0307B ONLY.

‡Used on Single-speed transmission 618-0307C ONLY.

# Model 609



# Power Take-off System

REF. NO.	PART NO.	DESCRIPTION	REF. NO.	PART NO.	DESCRIPTION
1	712-0431	Flange Lock Nut, 3/8-16	39	754-0472	PTO Belt (42-inch Decks w/ Electric PTO)
2	732-0996	Compression Spring, 1.31 x 3.0		754-0474	PTO Belt (46-inch Decks w/ Electric PTO)
3	783-0733	Spacer Cup, 1.5 OD	40	710-3144	Hex Cap Screw, 3/8-16 x 2.0
4	732-0997	Compression Spring, .66 OD x 1.5	41	710-3025	Hex Cap Screw, 5/16-18 x .625
5	710-0604A	Self-tapping Screw, 5/16-18 x .625	42	736-0105	Bell Washer, .401 x .870 x .063
6	710-0751	Hex Cap Screw, 1/4-20 x .62	43	710-0376	Hex Cap Screw, 5/16-18 x 1.0
7	712-0271	Hex Sems Nut, 1/4-20	44	712-3006	Hex Nut, 1/4-20
8	712-3044	Wing Nut, 1/4-20	45	736-0119	Lock Washer, 5/16
9	725-1706	12-volt Battery, 270 CCA	46	710-3029	Hex Cap Screw, 7/16-20 x 1.25
10	738-1014	Shoulder Screw, .5 x 1.25, 3/8-16	47	736-0171	Lock Washer, 7/16
11	738-1020	Shoulder Screw, .625 x .5, 7/16-20	48	750-0956	Spacer
12	736-0407	Bell Washer, .45 x 1.0 x .062	49	756-0982A	Engine Pulley
13	723-0444	Battery Strap	50	732-0735	Extension Spring, 1.318 x 2.37
14	783-1031	Hitch Plate	51	647-0053	Belt Guard
15	725-1747	Safety Interlock Plunger Switch	52	711-1044	Keeper Pin
16	736-0222	Lock Washer, 1/4	53	731-2111A	PTO Knob
17	725-1426	Solenoid, 12-Volt, 100 Amp	54	736-0108	Flat Washer, .510 x .750 x .033
18	710-0599	Self-tapping Screw, 1/4-20 x .5	55	747-1112A	PTO Handle
19	712-0459	Flange Lock Nut, 7/16-20	56	647-0046	PTO Lever
20	683-0304	Lower Frame Assembly	57	710-0650	Self-tapping Screw, 15/16-18 x .875
21	756-0639A	Engine Pulley, 3.56 OD	58	732-0995	Extension Spring, .5 x 6.0
22	783-1003	Electric Clutch Anti-rotation bracket	59	712-0229	Push Nut, 3/8
23	712-3010	Hex Nut, 5/16-18	60	783-0744A	Engagement Stop Bracket
24	710-3180	Hex Cap Screw, 5/16-18 x 1.75 (Grade 5)	61	748-0415A	Spacer, 3/8 x 1.54
25	732-0978	Extension Spring, 1.2 OD x 3.638	62	738-0372	Shoulder Spacer
26	710-0642	Self-tapping Screw, 1/4-20 x .750	63	683-0302	PTO Engagement Plate
27	736-0322	Flat Washer, .45 x 1.25 x .164	64	714-0470	Cotter Pin, 1/8 x 1.25
28	712-3004A	Flange Lock Nut, 5/16-18	65	736-0140	Flat Washer, .385 x .62 x .063
29	783-0653C	Steering Support Bracket	66	732-0991	Belt Guard
30	683-0301	Idler Bracket Assembly (42-inch decks)	67	732-0990	Belt Guard
	683-0297	Idler Bracket Assembly (46-inch decks)	68	732-0944	Extension Spring, .75 x 5.39
31	738-0982	Shoulder Screw, .498 x 3.245, 3/8-16	69	736-0275	Flat Washer, .344 x .688 x .065†
32	717-1708	Electric PTO Clutch	70	754-0485	PTO Belt (42-inch Decks w/ Manual PTO)
33	738-0785	Shoulder Spacer, 1.38 x .445 x .36		754-0486	PTO Belt (46-inch Decks w/ Manual PTO)
34	736-0171	Lock Washer, 7/16	71	710-0831	Hex Cap Screw, 3/8-16 x 5.5
35	710-3157	Hex Cap Screw, 7/16-20 x 3.25 (Grade 5)	72	736-0277	Flat Washer, 1.031 x 1.62 x .095*
36	710-3011	Hex Cap Screw, 3/8-16 x 2.25 (Grade 5)	73	736-0322	Flat Washer, .45 x 1.25 x .17*
37	756-0627	Flat Idler Pulley, 3.5 OD	74	736-3010	Flat Washer, .407 x .812 x .135
38	783-0349	Battery Tray	75	736-0280	Flat Washer, .395 x 1.12 x .10

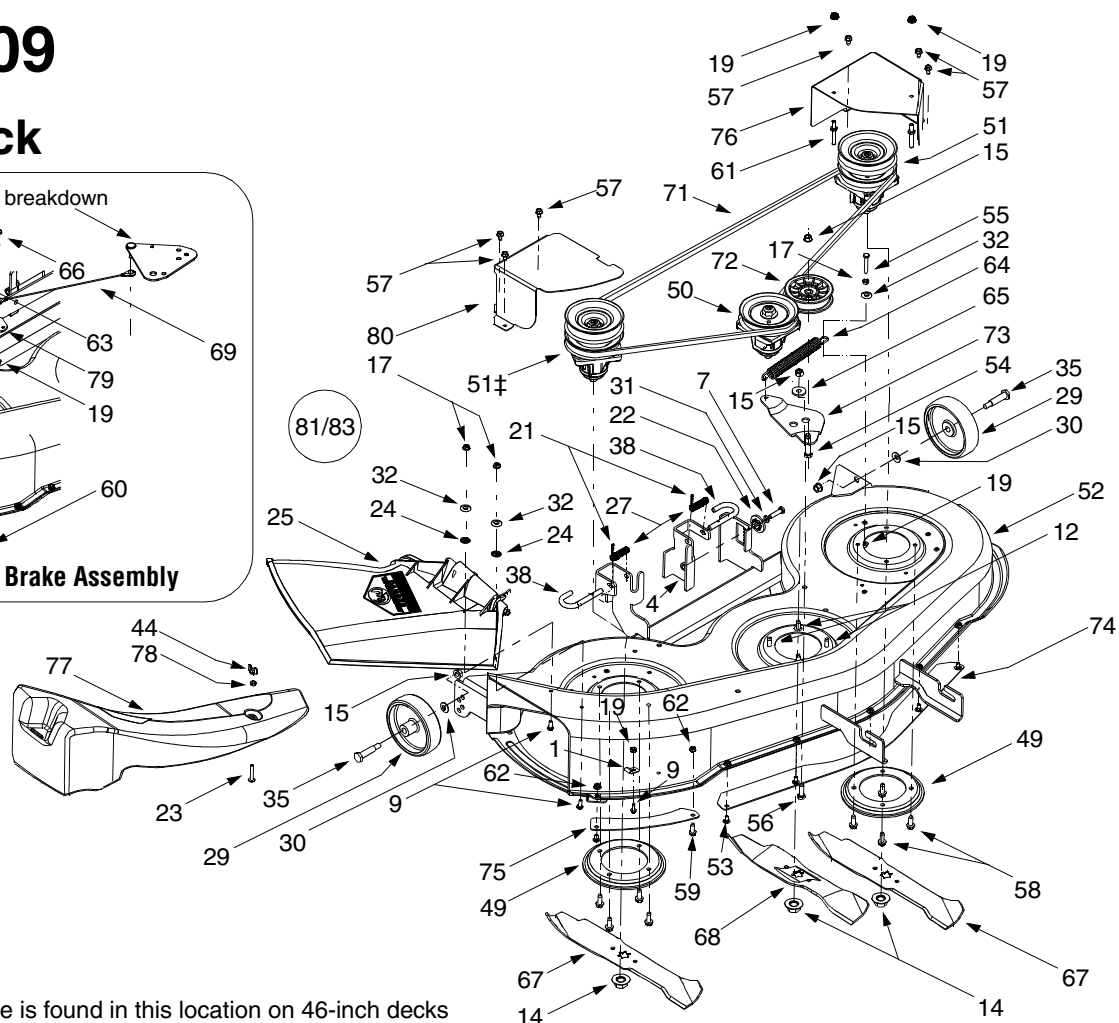
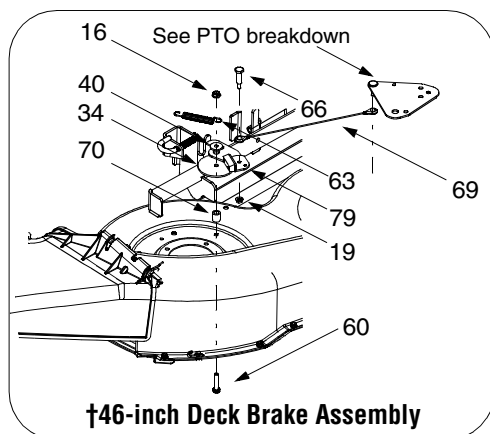
\*Found on units equipped with a Kohler engine ONLY.

**NOTE:** For **painted parts**, please refer to the list of color codes below. Please add the applicable color code, wherever needed, to the part number to order a replacement part. For instance, if a part numbered 700-xxxx is painted Powder Black, the part number to order would be 700-xxxx-0637.

MTD Red: 0638  
Oyster Gray: 0662  
Powder Black: 0637

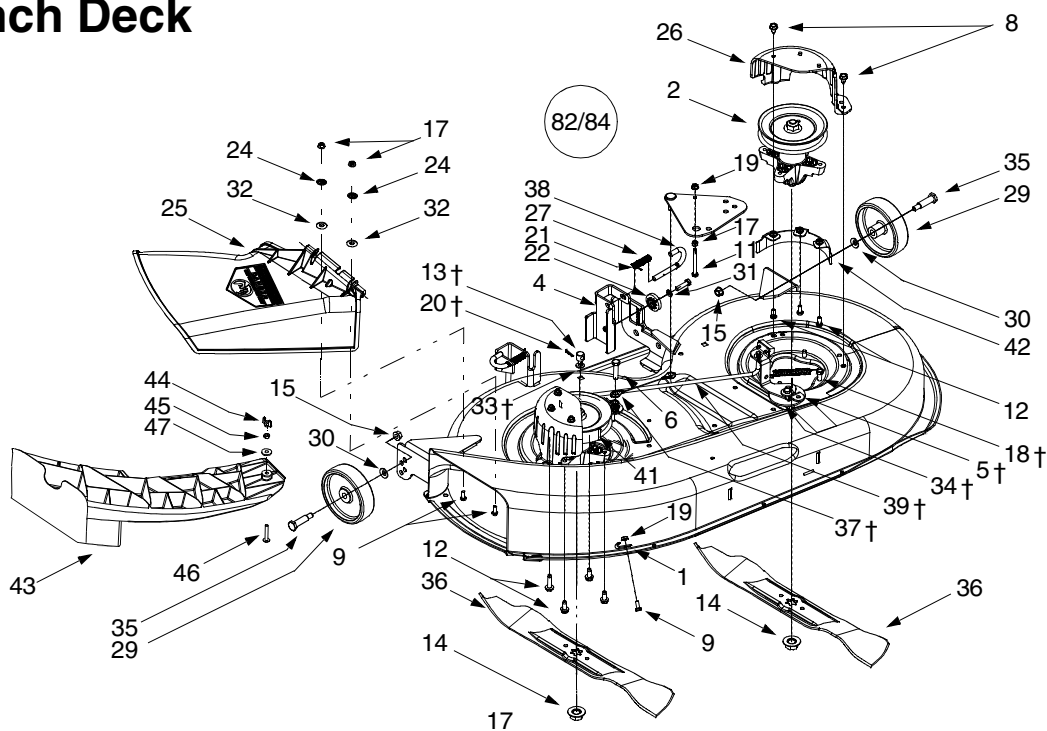
# Model 609

## 46-inch Deck



† A double-pulley spindle is found in this location on 46-inch decks engaged by electric PTOs only. Use 618-0240 on manual PTO decks.

## 42-inch Deck



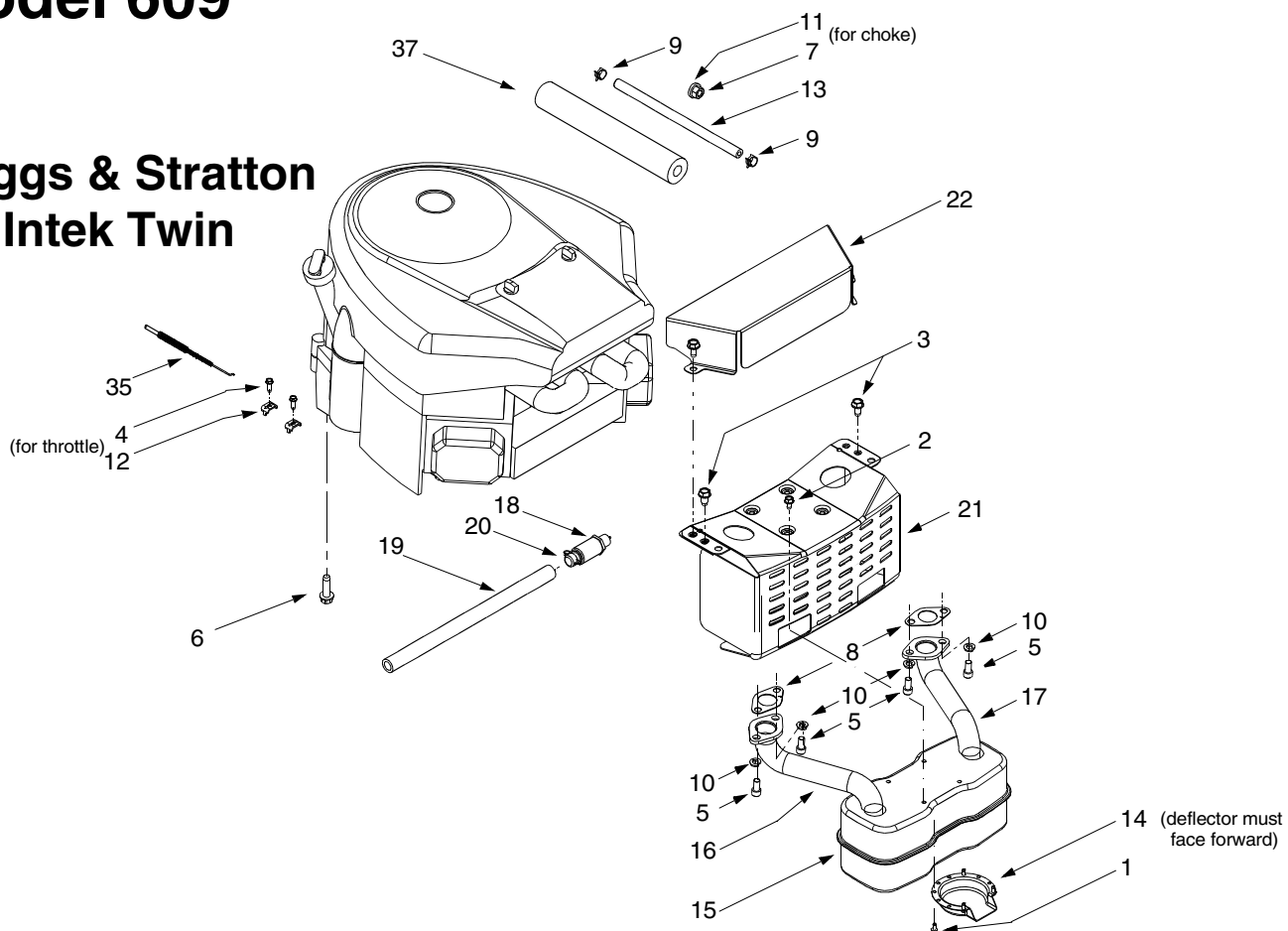
# Cutting Decks

REF. NO.	PART NO.	DESCRIPTION	REF. NO.	PART NO.	DESCRIPTION
1	16606	Retainer Hook	45	712-3006	Hex Nut, 1/4-20
2	618-0324	Spindle Assembly, 5.75 Dia.	46	710-0597	Hex Cap Screw, 1/4-20 x 1.0
3	683-0198C	42-inch Deck Shell	47	736-0173	Flat Washer, .28 x .74 x .063
4	683-0254	Deck Adjustment Bracket w/ Weld Nut	48	17258A	RH Belt Cover Bracket
5	683-0303	Deck Brake Assembly, 42-inch Decks†	49	17928	Reinforcement Spindle Plate
6	710-0520	Hex Cap Screw, 3/8-16 x 1.5	50	618-0240	Spindle Assembly, 5.0 Dia.
7	710-0528	Hex Cap Screw, 5/16-18 x 1.25	51	618-0241	Double Pulley Spindle Assembly ‡
8	710-0604A	Self-tapping Screw, 5/16-18 x .625	52	683-0265C	46-inch Deck Shell
9	710-0751	Hex Cap Screw, 1/4-20 x .62	53	710-0167	Carriage Screw, 1/4-20 x .50
10	710-0817	Self-tapping Screw, 5/16-18 x 1.25	54	710-0347	Hex Cap Screw, 3/8-16 x 1.75
11	710-1122	Hex Cap Screw, 1/4-20 x 2.5	55	710-0501	Hex Cap Screw, 1/4-20 x 2.0
12	710-1260A	Self-tapping Screw, 5/16-18 x .75	56	710-0514	Hex Cap Screw, 3/8-16 x 1.0
13	711-0677	Ferrule, 5/16-18†	57	710-0599	Self-tapping Screw, 1/4-20 x .5
14	712-0417A	Hex Flange Nut, 5/8-18	58	710-0650	Self-tapping Screw, 15/16-18 x .875
15	712-0431	Flange Lock Nut, 3/8-16	59	710-0703	Hex Screw, 1/4-20 x .75
16	712-3004A	Flange Lock Nut, 5/16-18	60	710-0805	Hex Cap Screw, 5/16-18 x 1.5
17	712-3006	Hex Nut, 1/4-20	61	711-0993	Belt Keeper Pin
18	712-3009	Hex Lock Nut, 5/16-18	62	712-0271	Hex Sems Nut, 1/4-20
19	712-3027	Hex Flange Lock Nut, 1/4-20	63	732-0429A	Extension Spring, .5 x 3.97
20	714-0104	Internal Cotter Pin, .072 x 1.12†	64	732-0594A	Extension Spring, .91 x 7.33
21	714-0111	Cotter Pin, 3/32 x 1.0	65	738-0347	Shoulder Spacer, .625 x 1.16
22	717-1553A	Deck Adjustment Gear	66	738-0572	Shoulder Screw, .374 x 1.16
23	710-0578	Screw, 1/4-20 x 1.5	67	742-0611	Three-in-one Blade, Star Center, 16.28"
24	726-0233	Push Nut, .25 x .5	68	742-0612	Three-in-one Blade, Star Center, 14.88"
25	731-1032B	Side Discharge Chute Assembly	69	746-1107	Bracket Cable, 12"
26	731-2231A	Belt Cover	70	750-0807	Spacer, .385 x .625 x .70
27	732-0306	Compression Spring, .406 x .531 x 1.75	71	754-0349	Deck Belt
28	732-0428A	Compression Spring, .50 x 4.35†	72	756-0627	Flat Idler Pulley, 3.5 OD
29	734-0973	Deck Wheel, 5 x 1.38	73	783-0139	Idler Bracket
30	736-0105	Bell Washer, .401 x .87 x .063	74	783-0141	Center Deck Skirt
31	736-0119	Lock Washer, 5/16	75	783-0142	RH Deck Skirt
32	736-0270	Bell Washer, .265 x .75 x .062	76	783-0747	LH Belt Cover
33	736-0275	Flat Washer, .344 x .688 x .065†	77	731-1636	Mulch Plug, 46-inch Decks
34	736-0416	Flat Washer, .320 x 3.0 x .125	78	712-0291	Hex Lock Nut, 1/4-20
35	738-0373	Shoulder Screw, .498 x 1.53	79	17116	Deck Brake Assembly, 46-inch Decks
36	742-0616	Three-in-one Blade, Star Center, 21.23"	80	783-0805A	RH Belt Cover
37	746-0970	Bracket Cable, 5.35"†	81	753-0874	46-inch Deck Assembly Complete (Electric PTO activated, w/o mulch kit)
38	747-1116	Deck Release Pin	82	753-0873	42-inch Deck Assembly Complete (Electric PTO activated, w/o mulch kit)
39	747-1202	Deck Brake Rod†	83	753-0872	46-inch Deck Assembly Complete (Manual PTO activated, w/o mulch kit)
40	748-0324	Shoulder Spacer†	84	753-0871	42-inch Deck Assembly Complete (Manual PTO activated, w/o mulch kit)
41	783-1026	RH Belt Guard Bracket			
42	783-1027	LH Belt Guard Bracket			
43	731-1643A	Mulch Plug, 42-inch Decks			
44	712-3087	Wing Nut, 1/4-20			

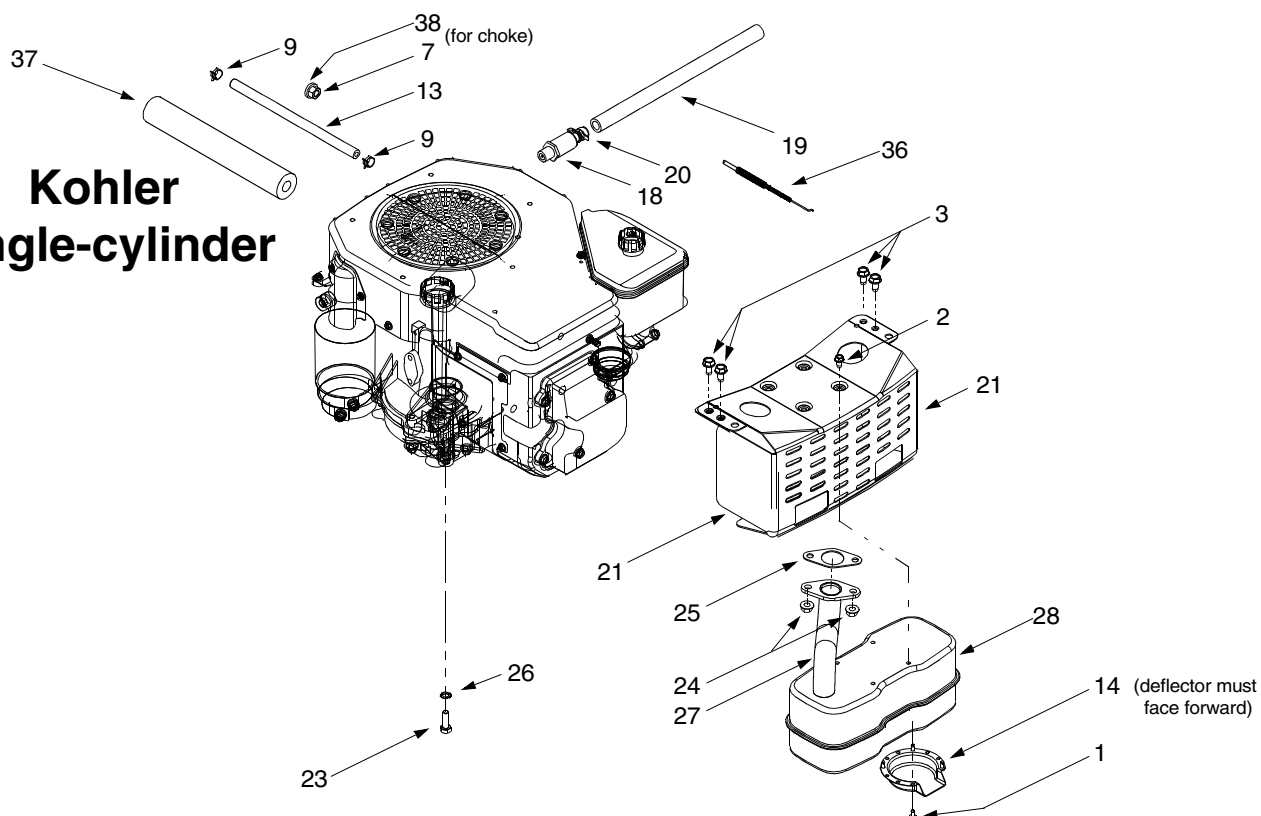
† Found on decks engaged by manual PTOs only.

# Model 609

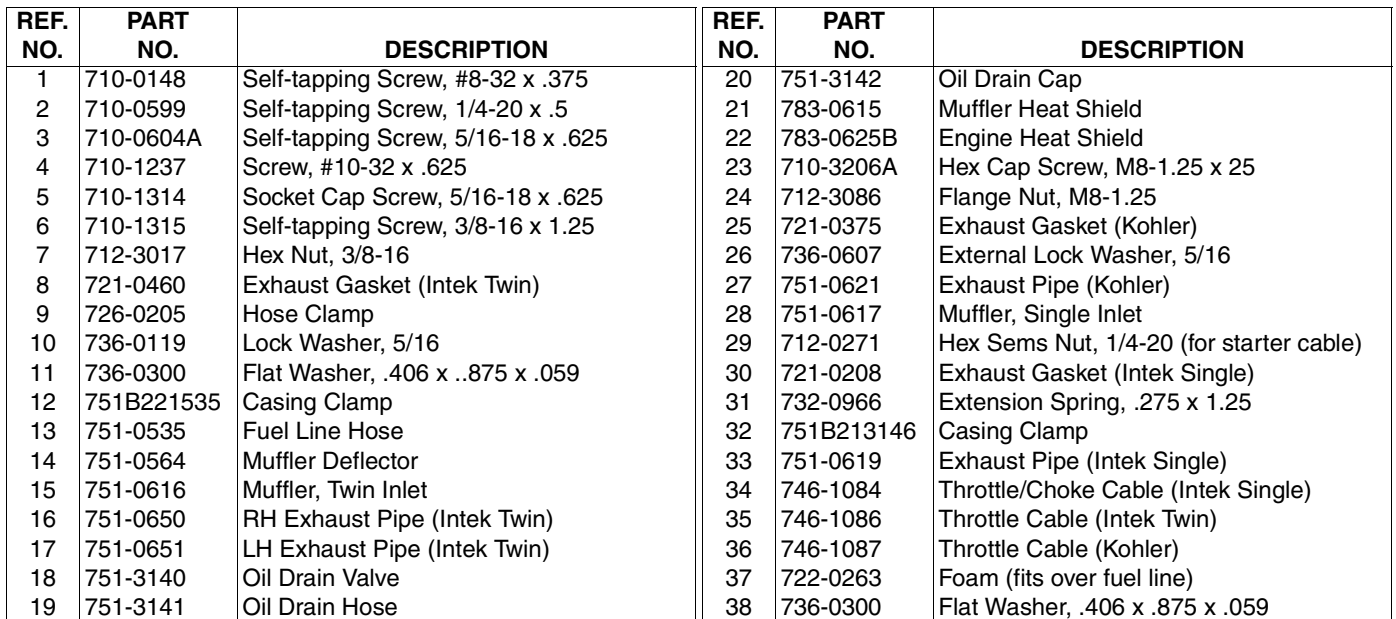
## Briggs & Stratton Intek Twin



## Kohler Single-cylinder



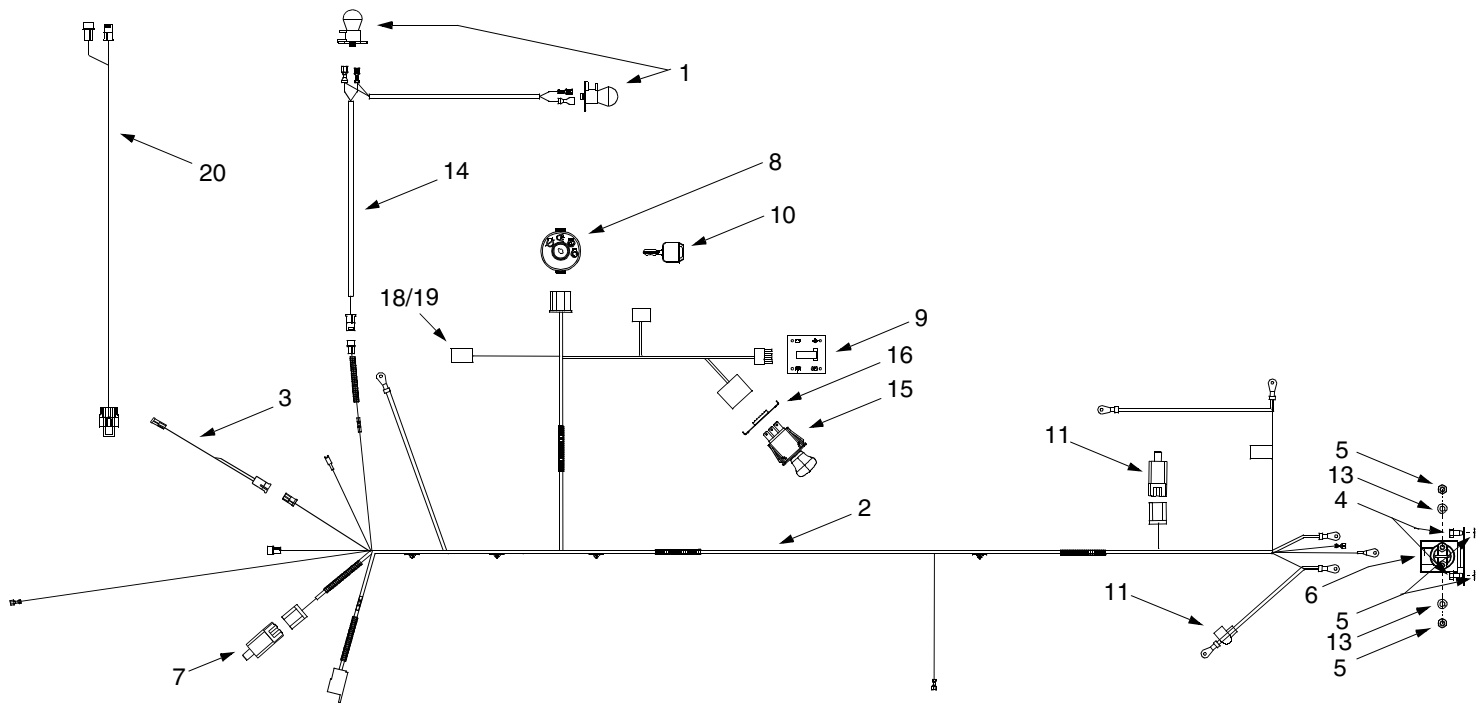
# Briggs & Stratton Intek Single





# Model 609

# Electrical System



Electric PTO harness shown. Manual PTO harness will vary slightly

REF. NO.	PART NO.	DESCRIPTION
1	625-0051	Bulb/Socket Headlight Assembly
2	629-0939	Wiring Harness w/o Ref. 14 (units w/ Electric PTO)
	629-0944	Wiring Harness w/o Ref. 14 (units w/ Manual PTO)
3	629-0126	Harness Adapter, #18 x 5
4	710-0599	Self Tapping Screw, 1/4-20 x .5
5	712-3006	Hex Nut, 1/4-20
6	725-1426	Solenoid, 12-volt, 100 Amp
7	725-1657A	Snap Mount Safety Interlock Switch (Brake)
8	725-1741	Ignition Switch
9	725-1743	Systems Indicator Monitor w/ Hour Meter (shown)
	725-1758	Systems Indicator Monitor w/ Ammeter
10	725-1745	Ignition Key
11	725-1747	Safety Plunger Switch (Seat)
12	736-0222	External Lock Washer, 1/4
13	736-0329	Lock Washer, 1/4
14	629-0309	Headlight Harness
15	725-1752	Electric PTO Switch†
16	783-0462	Retainer Bracket†
17	725-3007A	Positive Terminal Cover (Boot)
18	729-0357	Fuse Holder
19	725-1381	20-amp Fuse
20	629-0924	Harness Adapter (for Kohler Engines)

† Found on tractors engaged by an electric PTO only.

# **Notes**

# MANUFACTURER'S LIMITED WARRANTY FOR:



The limited warranty set forth below is given by MTD PRODUCTS INC ("MTD") with respect to new merchandise purchased and used in the United States, its possessions and territories.

MTD warrants this product against defects in material and workmanship for a period of two (2) years commencing on the date of original purchase and will, at its option, repair or replace, free of charge, any part found to be defective in material or workmanship. This limited warranty shall only apply if this product has been operated and maintained in accordance with the Operator's Manual furnished with the product, and has not been subject to misuse, abuse, commercial use, neglect, accident, improper maintenance, alteration, vandalism, theft, fire, water or damage because of other peril or natural disaster. Damage resulting from the installation or use of any accessory or attachment not approved by MTD Products Inc. for use with the product(s) covered by this manual will void your warranty as to any resulting damages.

Normal wear parts or components thereof are subject to separate terms as follows: All normal wear part or component failures will be covered on the product for a period of 90 days regardless of cause. After 90 days, but within the two year period, normal wear part failures will be covered ONLY IF caused by defects in material or workmanship of OTHER component parts. Normal wear parts and components include, but are not limited to, belts, blades, blade adapters, grass bags, rider deck wheels, seats, snow thrower skid shoes, shave plates and tires. Batteries are covered by a 90-day limited replacement warranty.

**HOW TO OBTAIN SERVICE:** Warranty service is available, WITH PROOF OF PURCHASE THROUGH YOUR LOCAL AUTHORIZED SERVICE DEALER. To locate the dealer in your area, please check for a listing in the Yellow Pages or contact the Customer Service Department of MTD PRODUCTS INC by calling 1-800-800-7310 or writing to P.O. Box 368022, Cleveland, Ohio 44136-9722.

**This limited warranty does not provide coverage in the following cases:**

- a. The engine or component parts thereof. These items carry a separate manufacturer's warranty. Please refer to the applicable manufacturer's warranty on these items.
- b. Log splitter pumps, valves and cylinders have a separate one year warranty.

c. Routine maintenance items such as lubricants, filters, blade sharpening and tune-ups, or adjustments such as brake adjustments, clutch adjustments or deck adjustments; and normal deterioration of the exterior finish due to use or exposure.

d. MTD does not extend any warranty for products sold or exported outside of the United States of America, its possessions and territories, except those sold through MTD's authorized channels of export distribution.

**No implied warranty, including any implied warranty of merchantability or fitness for a particular purpose, applies after the applicable period of express written warranty above as to the parts as identified. No other express warranty or guaranty, whether written or oral, except as mentioned above, given by any person or entity, including a dealer or retailer, with respect to any product shall bind MTD. During the period of the Warranty, the exclusive remedy is repair or replacement of the product as set forth above.** (Some states do not allow limitations on how long an implied warranty lasts, so the above limitation may not apply to you.)

**The provisions as set forth in this Warranty provide the sole and exclusive remedy arising from the sales. MTD shall not be liable for incidental or consequential loss or damages including, without limitation, expenses incurred for substitute or replacement lawn care services, for transportation or for related expenses, or for rental expenses to temporarily replace a warranted product.** (Some states do not allow the exclusion or limitation of incidental or consequential damages, so the above exclusion or limitation may not apply to you.)

In no event shall recovery of any kind be greater than the amount of the purchase price of the product sold. Alteration of the safety features of the product shall void this Warranty. You assume the risk and liability for loss, damage, or injury to you and your property and/or to others and their property arising out of the use or misuse or inability to use the product.

This limited warranty shall not extend to anyone other than the original purchaser, original lessee or the person for whom it was purchased as a gift.

**How State Law Relates to this Warranty:** This limited warranty gives you specific legal rights, and you may also have other rights which vary from state to state.