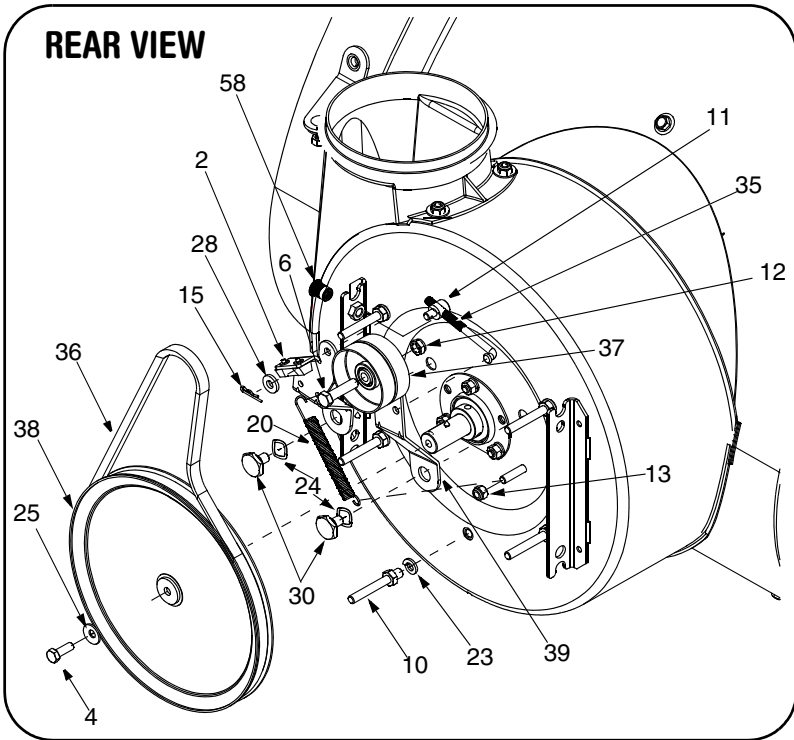
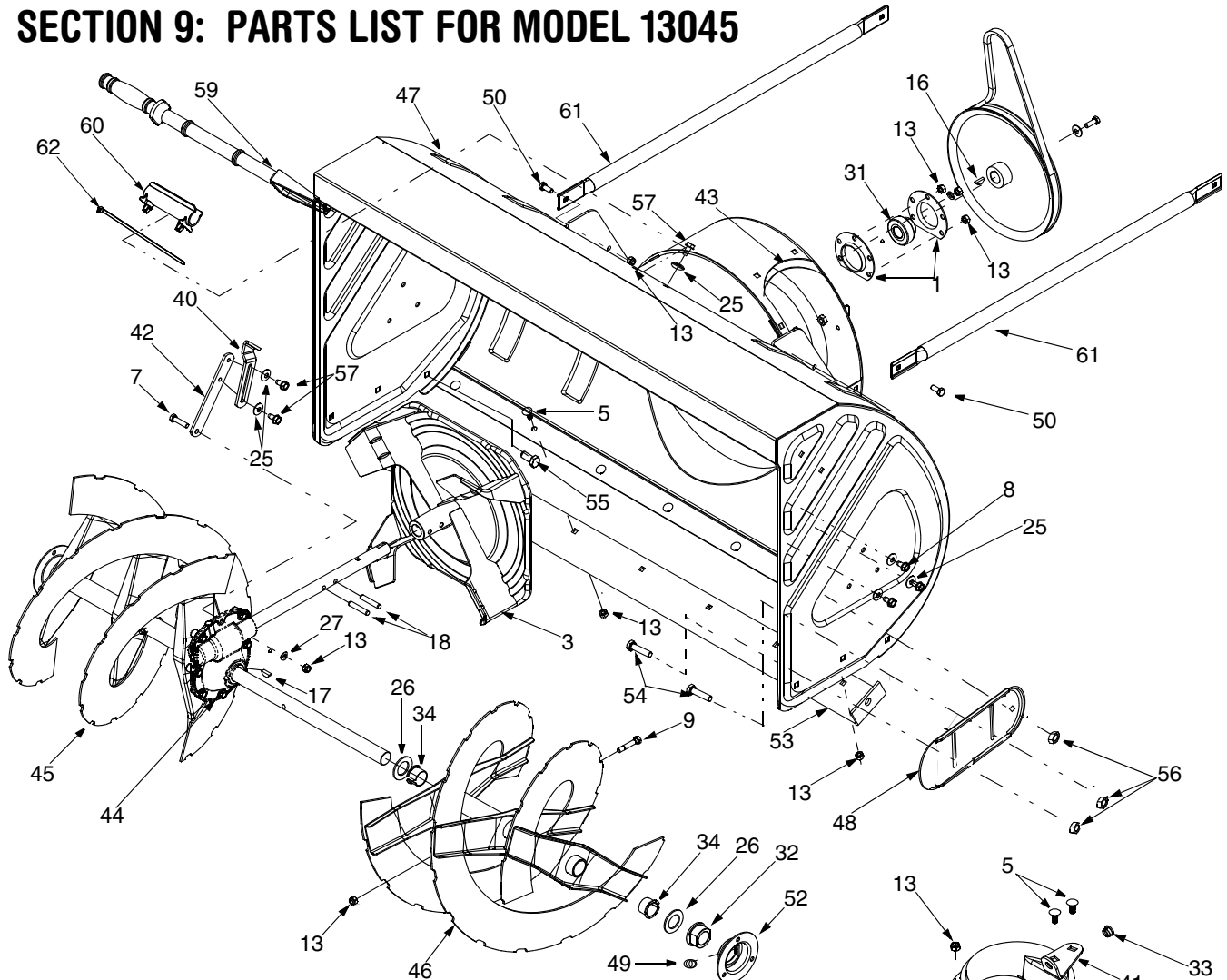


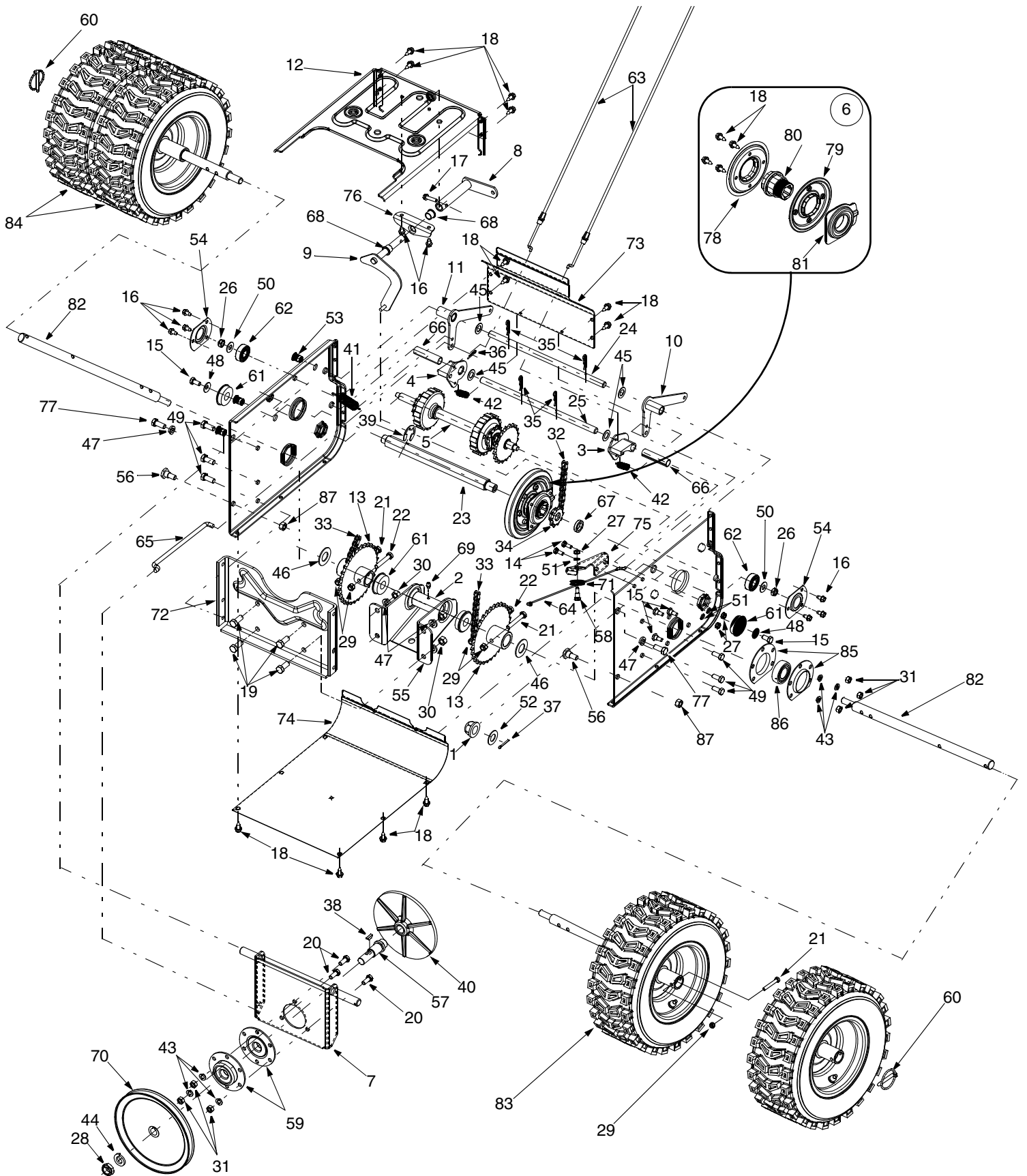
SECTION 9: PARTS LIST FOR MODEL 13045



Model 13045

Ref. No.	Part No.	Part Description	Ref. No.	Part No.	Part Description
1.	05244A	Bearing Housing	34.	741-0494	Flange Bushing
2.	618-0281A	Auger Brake Bracket Assembly	35.	747-0980	Auger Idler Rod
3.	684-0090A	16" Impeller Assembly	36.	754-0222A	V-Belt
4.	710-0371	Hex Lock Bolt 5/16-18 x.875"	37.	756-0178	Flat Idler
5.	710-0451	Carriage Bolt 5/16-18 x .750"	38.	756-0243	Pulley
6.	710-0459A	Hex Screw, Special 3/8-24 x 1.5"	39.	784-0385A	Auger Idler Bracket
7.	710-0528	Hex Screw 5/16-18 x 1.25"	40.	784-5076	Support Bracket
8.	710-0726	Self-Tapp. Screw 5/16-12 x.750"	41.	784-5123	Chute Directional Control Bracket
9.	710-0891	Shear Bolt 5/16-18 x 1.75"	42.	784-5710	Support Plate
10.	711-0640	Stud	43.	784-5711	Chute Bracket
11.	711-0677	Ferrule	44.	618-0436	Gear Assembly
12.	712-0116	Jam Nut 3/8-24	45.	684-0072	Spiral Assembly RH
13.	712-04063	Flange Lock Nut, 5/16-18	46.	684-0073	Spiral Assembly LH
15.	714-0104	Hairpin Clip	47.	684-04008	45" Auger Housing Assembly
16.	714-0126	Key	48.	784-5697	Slide Shoe
17.	714-0135	Key	49.	737-3000	Lube Fitting
18.	715-0118	Spiral Pin	50.	710-3008	Screw, 5/16-18 x.75"
19.	731-1696A	Chute Adapter	52.	784-0315	Bearing Housing
20.	732-0858	Extension Spring	53.	784-5696B	45" Shave Plate
23.	736-0169	Lock Washer	54.	710-0389	Carriage Screw
24.	736-0174	Wave Washer	55.	710-3168	Carriage Bolt
25.	736-0242	Belleville Washer	56.	712-04065	Flange Lock Nut, 3/8-16
26.	736-0250	Flat Washer	57.	710-1260A	Screw, 5/16-18 x.75
27.	736-0271	Spring Washer	58.	712-0717	Insert Nut, 3/8-16
28.	736-3008	Flat Washer	59.	731-2643	Clean-out Tool
30.	738-0281	Shoulder Screw	60.	731-2635	Clean-out Tool Mount
31.	741-04024	Self-Aligning Bearing	61.	749-1117	Support Tube
32.	741-0192	Flange Bearing w/ Flats	62.	725-0157	Cable Tie
33.	741-0475	Plastic Bushing			

Model 13045

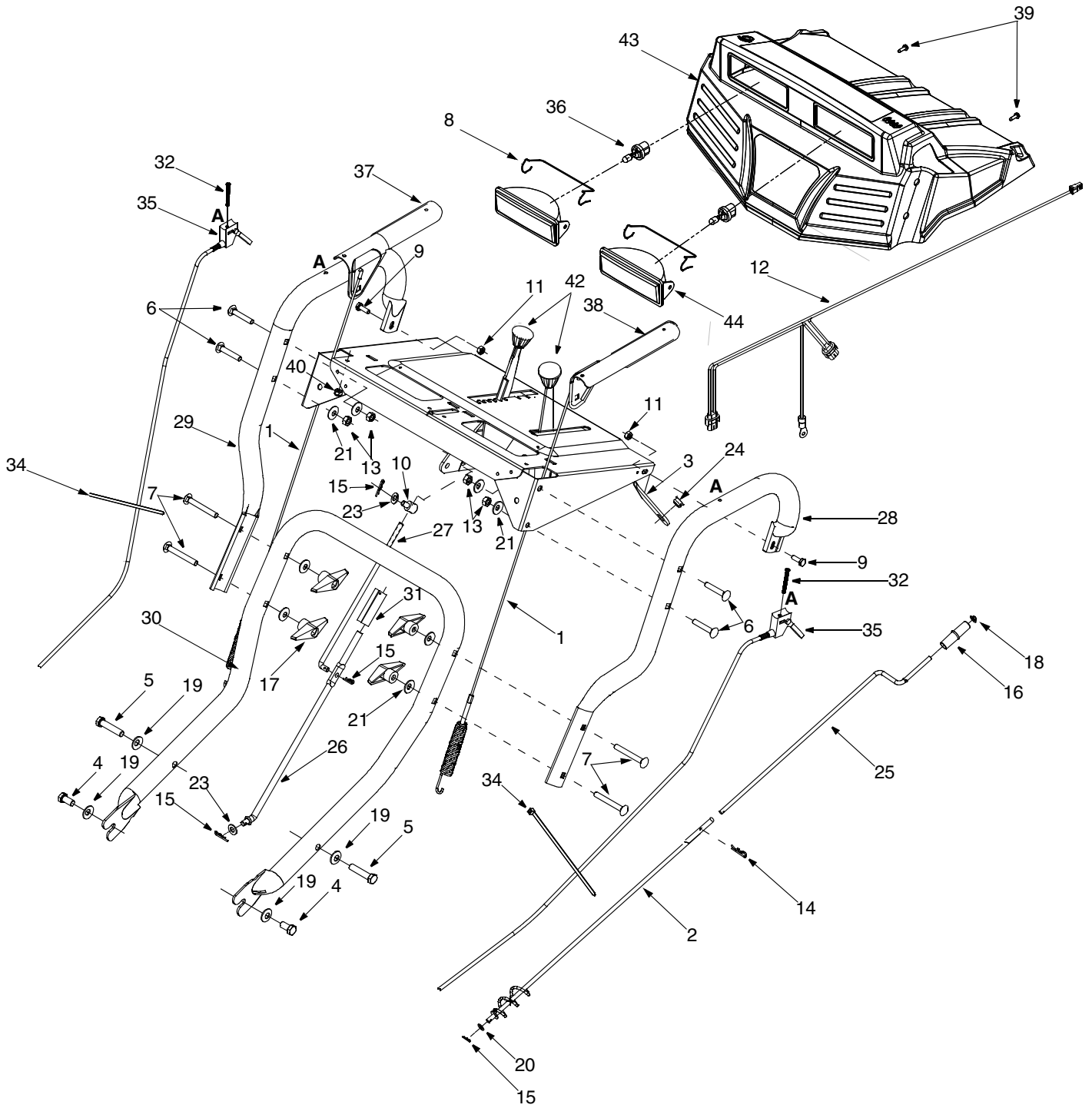


Model 13045

Ref. No.	Part No.	Part Description	Ref. No.	Part No.	Part Description
1.	741-0225	Hex Flange Bearing	49.	710-0726	Self-tapping Screw, 5/16-12 x.750
2.	750-1302A	Spacer,.6725 x 1.125 x 2.485	50.	736-0300	Flat Washer
3.	618-0279	Dogg Assembly LH	51.	736-0329	Lock Washer
4.	618-0280	Dogg Assembly RH	52.	736-0623	Flat Washer
5.	618-0282D	Drive Shaft Assembly	53.	712-0717	Nut Insert, 3/8-16
6.	618-04178	Friction Wheel Assembly	54.	784-0404	Bearing Retainer Bracket
7.	684-0162	Support Bracket Assembly	55.	784-0407	Axle Bearing Support Bracket
8.	684-0161	Shift Arm Assembly	56.	738-0143	Shoulder Screw
9.	684-04103	Shift Rod Assembly	57.	738-0279	Drive Plate Spindle
10.	684-0118	Auger Actuator Bracket Assy.	58.	738-0924	Shoulder Screw 1/4-28 x .375"
11.	684-0119	Drive Actuator Bracket Assy.	59.	741-0163A	Bearing Housing Assembly
12.	790-00016	Frame Assembly	60.	714-0151A	Click Pin
13.	684-0122	Sprocket Assembly	61.	741-0563	Ball Bearing
14.	710-0195	Hex Screw, 1/4-28 x.625"	62.	741-0747	Ball Bearing
15.	710-0538	Hex Screw, 5/16-18 x.625"	63.	746-0949A	Steer Cable
16.	710-0599	Self-tapping Screw, 1/4-20 x.5	64.	746-0951	Auger Idler Cable
17.	710-0788	Self-tapping Screw, 1/4-20 x 1"	65.	747-0973	Drive Clutch Rod
18.	710-0896	Self-tapping Screw, 1/4-14 x.625"	66.	750-0903	Split Spacer
19.	710-3001	Hex Screw 3/8-16 x .880"	67.	750-0997	Spacer
20.	710-3008	Hex Screw 5/16-18 x .75"	68.	741-0748	Flange Bearing
21.	710-3103	Hex Screw 5/16-18 x 2"	69.	737-3000	Lube Fitting, 3/16
22.	710-3180	Hex Screw 5/16-18 x 1.75"	70.	756-0344	Drive Pulley
23.	711-04279	Hex Drive Shaft	71.	756-0625	Roller Cable
24.	711-1193	Actuator Shaft	72.	784-0406	Frame Support Bracket
25.	711-1194	Actuator Drive Shaft	73.	784-0379	Upper Frame Cover
26.	712-0116	Lock Nut	74.	784-0380	Lower Frame Cover
27.	712-0138	Hex Nut 1/4-28	75.	784-0384	Auger Cable Bracket
28.	712-0221	Jam Lock Nut	76.	784-0403	Shift Bracket
29.	712-04063	Flange Lock Nut, 5/16-18	77.	710-1879	Hex Screw 3/8-16 x.880
30.	712-0798	Hex Nut 3/8-16	78.	718-04034	Bonded Friction Wheel
31.	712-3010	Hex Nut 5/16-18	79.	790-00011	Friction Wheel Plate
32.	713-0284	Chain	80.	718-04070	Friction Wheel Hub
33.	713-0286	Chain	81.	618-04169	Friction Wheel Bearing Assembly
34.	713-04015	Sprocket, 10T	82.	738-1166A	Wheel Axle
35.	714-0101	Hairpin Clip	83.	634-0225	Wheel Assembly, LH*
36.	714-0104	Hairpin Clip	—	734-2031	X-Trac Tire Only
37.	714-0115	Cotter Pin	—	734-1124	Rim Only
38.	714-0388	Key	—	734-0255	Air Valve Only
39.	716-0136	Retainer Ring	—	741-0246A	Bearing
40.	717-0302	Drive Plate	84.	634-0226	Wheel Assembly, RH*
41.	732-0121	Extension Spring	—	734-2031	X-Trac Tire Only
42.	732-0209	Extension Spring	—	734-1124	Rim Only
43.	736-0119	Lock Washer 5/16	—	734-0255	Air Valve Only
44.	736-0158	Lock Washer 5/8	—	741-0246A	Bearing
45.	736-0160	Flat Washer	85.	05244A	Bearing Housing
46.	736-0163	Flat Washer	86.	741-04025	Self Aligning Bearing
47.	736-0217	Lock Washer	87.	712-04065	Flange Lock Nut, 3/8-16
48.	736-0242	Bell Washer			

*Note: Two wheel assemblies are found on both the left-hand & right-hand sides.

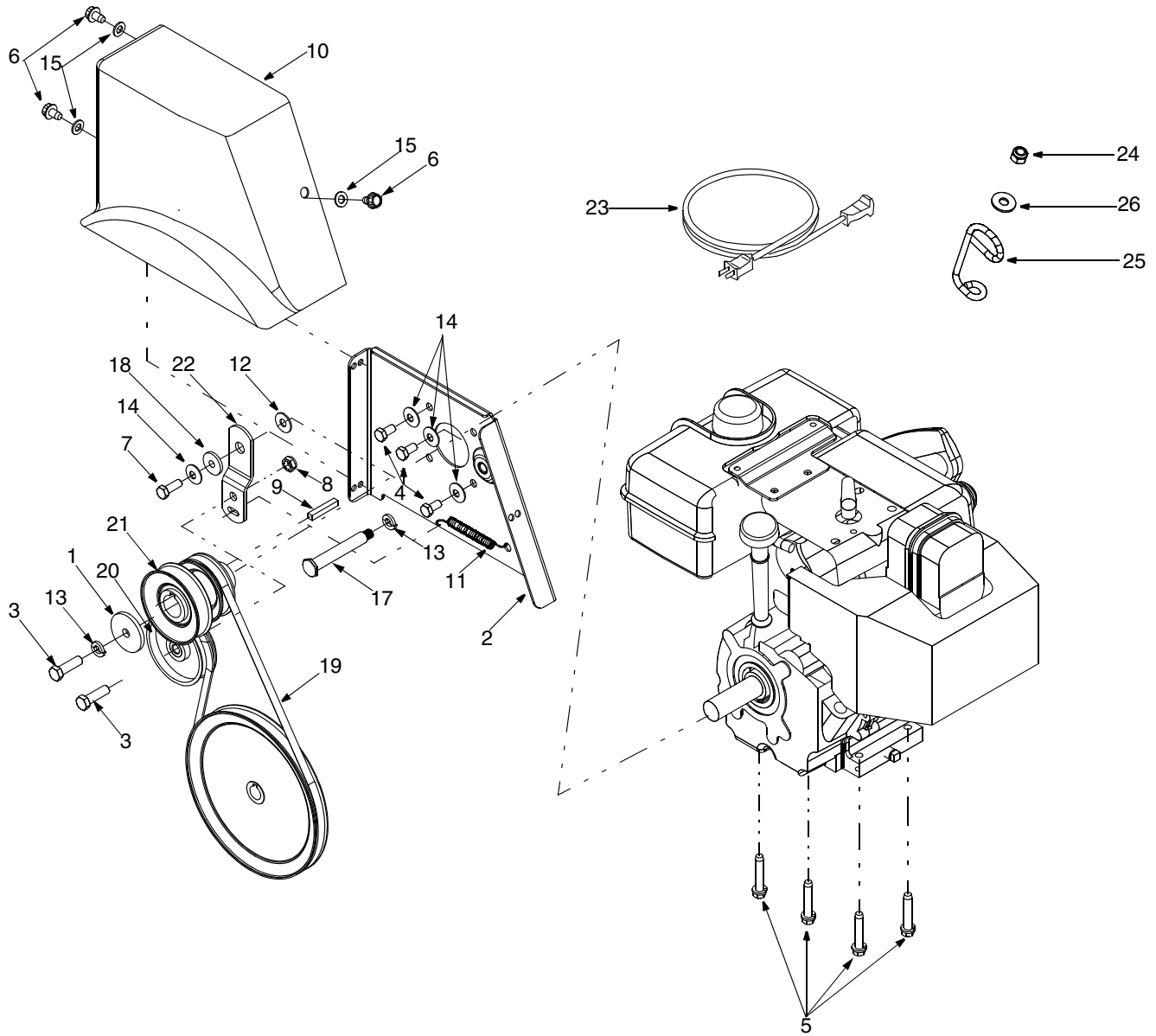
Model 13045



Model 13045

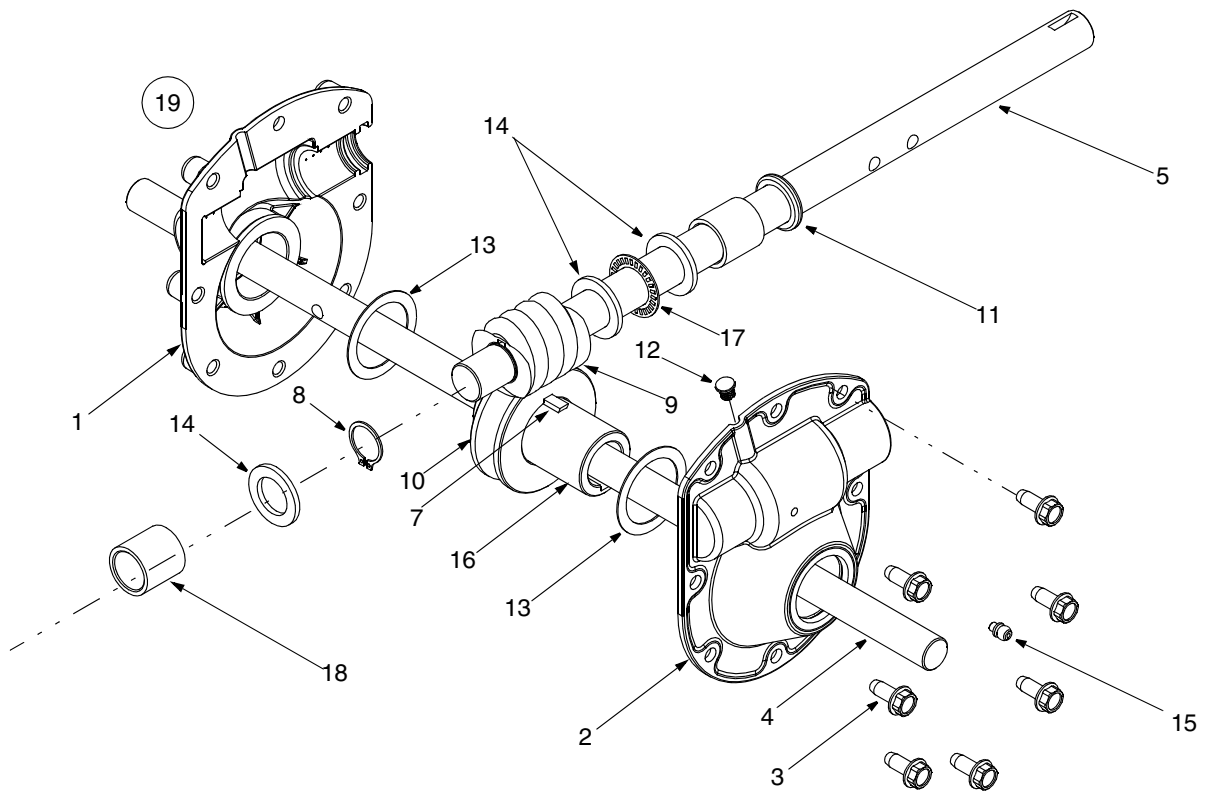
Ref. No.	Part No.	Part Description
1.	646-0012	Auger/Drive Cable Assembly
2.	684-0053B	Lower Chute Directional Control
3.	705-5266	Split Chute Directional Control Brkt.
4.	710-1879	Hex Screw, 3/8-16 x .88"
5.	710-1878	Hex Screw, 3/8-16 x 1.75"
6.	710-0458	Carriage Bolt 5/16-18 x 1.75"
7.	710-0572	Carriage Bolt 5/16-18 x 2.5"
8.	747-1136	Lamp Retainer
9.	710-0597	Hex Screw 1/4-20 x 1.00"
10.	711-0677	Ferrule
11.	712-04064	Flange Lock Nut, 1/4-20
12.	629-04010	Lamp Wire Harness
13.	712-3010	Hex Nut
14.	714-0101	Hairpin Clip
15.	714-0104	Hairpin Clip
16.	720-0201A	Chute Directional Control Knob
17.	720-0284	Knob
18.	726-0100	Push Cap
19.	736-0105	Bell Washer
20.	736-0185	Flat Washer
21.	736-0242	Belleville Washer
23.	736-0275	Flat Washer
24.	741-0475	Plastic Bushing
25.	747-0624	Chute Directional Control
26.	747-0983A	Lower Shift Rod
27.	747-0997	Upper Shift Rod
28.	749-0989A	Upper Handle LH
29.	749-0990A	Upper Handle RH
30.	749-0991	Lower Handle
31.	750-0963	Shift Rod Connector
32.	710-1625	Oval C-Sunk Screw
34.	725-0157	Cable Tie
35.	746-0950A	Trigger Control
36.	725-1658	Halogen Lamp
37.	705-5218	Handle Engagement RH
38.	705-5219	Handle Engagement LH
39.	710-1003	Special B Screw
40.	712-0271	Hex Sems Nut
42.	720-0232	Shift Knob
43.	731-04069	Handle Panel
44.	725-1672	Lens Assembly

Model 13045



Ref. No.	Part No.	Description	Ref. No.	Part No.	Description
1.	07386	Washer	14.	736-0242	Belleville Washer
2.	684-0123A	Belt Cover Bracket Assembly	15.	736-0264	Flat Washer
3.	710-0191	Hex Screw 3/8-24 x 1.25"	17.	738-0215A	Shoulder Screw
4.	710-0237	Hex Screw 5/16-24 x .625"	18.	748-0234	Shoulder Spacer
5.	710-0502A	Self-tapping Sems Screw	19.	754-0131	V-Belt
6.	710-0607	TT Screw 5/16-18 x 0.5"	20.	756-0240	Flat Idler
7.	710-1245B	Hex Lock Screw 5/16-24 x 1.25"	21.	756-0241B	Double Pulley
8.	712-0116	Jam Nut	22.	784-5726	Idler Bracket
9.	714-0118	Key	23.	629-0071	Extension Cord, 110V, 3-prong
10.	731-2531	Belt Cover	24.	712-0324	Hex Lock Nut 1/4-20
11.	732-0303	Extension Spring	25.	732-0705	Cable Control Wire
12.	736-0159	5/16 Washer	26.	736-0173	Flat Washer
13.	736-0217	Lock Washer			

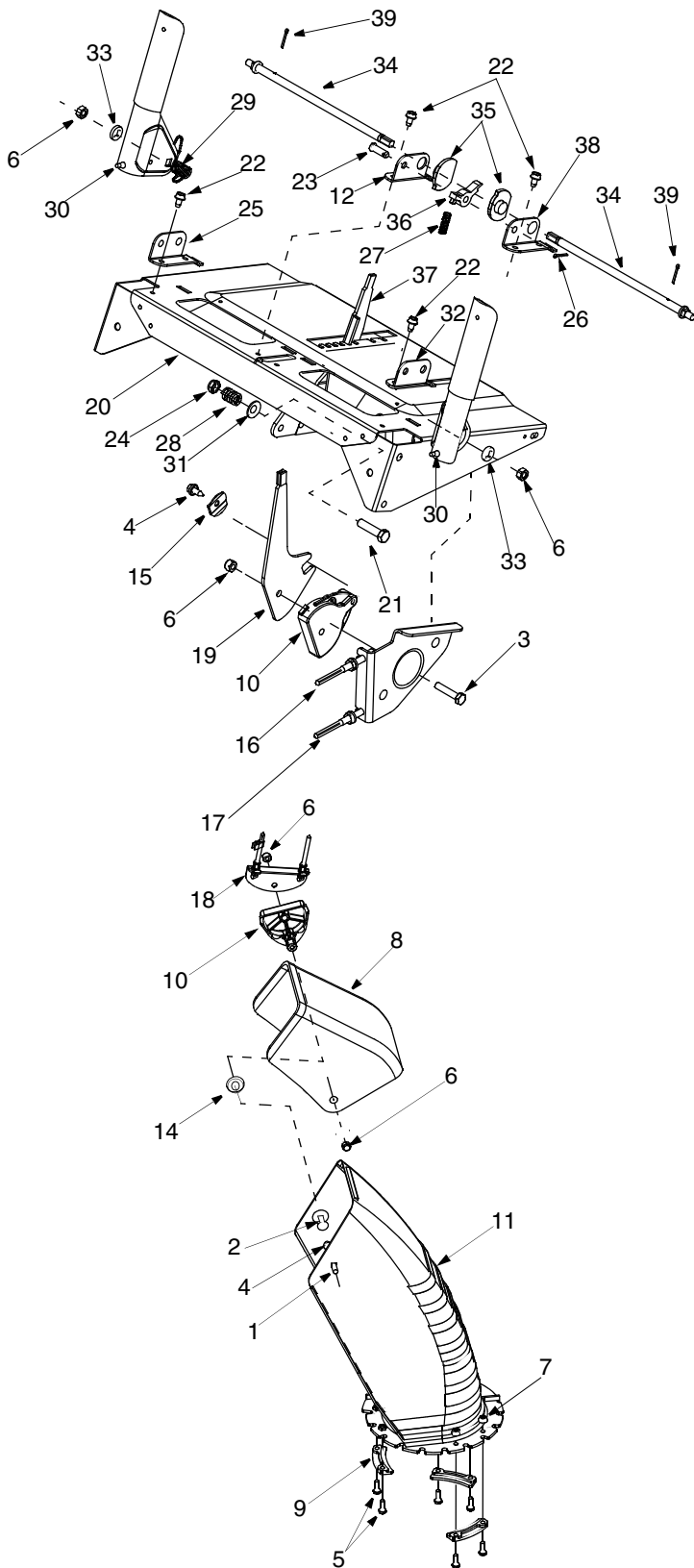
Model 13045



Ref. No.	Part No.	Description
1.	618-0246	Housing Assembly, RH
2.	618-0435	Housing Assembly, LH
3.	710-1260A	Screw, 5/16-18 x 0.75
4.	738-0492	Spiral Axle
5.	711-1133	Auger Drive Shaft
6.	714-0126	Hi Pro Key, 3/16 x 3/4 (Not Shown)
7.	714-0135	#91 Woodruff Key 1/4 x 3/4
8.	716-0111	Snap Ring,.875 Dia.
9.	717-0299	Double Thread Worm Gear LH
10.	717-1425	Worm Gear, LH
11.	721-0145	Oil Seal,.875 ID
12.	721-0325	Plug, 1/4 x.437
13.	736-0266	Flat Washer, 1.52 x 2.0
14.	736-0291	Flat Washer,.88 x 1.38
15.	737-3000	Lube Fitting, 3/16 Drive
16.	738-0275	Worm Gear Shaft
17.	741-0184	Thrust Bearing,.877 ID
18.	741-0217	Sleeve Bearing,.877 x.125 x 1.11
19.	618-0436	Auger Gearbox Assembly Complete

NOTE: When rebuilding a gearbox assembly, include 3 oz. of Shell Alvania EP Lead-Free Grease (Part No. 737-0168).

Model 13045



Ref. No.	Part No.	Description
1.	710-0276	Carriage Screw
2.	710-0458	Carriage Bolt 5/16-18 x 1.75"
3.	710-0805	Hex Bolt 5/16-18 x 1.5"
4.	710-0895	Hex Screw 1/4-15 x .750"
5.	710-0597	Hex Screw 1/4-20 x 1.00"
6.	712-04063	Flange Lock Nut, 5/16-18
7.	712-04064	Flange Lock Nut, 1/4-20
8.	731-0846C	Upper Chute
9.	731-0851A	Chute Flange Keeper
10.	731-1313C	Chute Tilt Cable Guide
11.	731-0903D	Lower Chute
12.	784-5680	Handle Suppt. Bracket 5/8 RH
14.	736-0231	Flat Washer
15.	736-0506A	Special Washer
16.	746-0902	Chute Control Cable
17.	746-0903	Chute Cable w/Clip
18.	784-5594	Cable Bracket
19.	784-5604	Chute Tilt Handle
20.	684-0102	Handle Panel Assembly w/ Tilt
21.	710-0459A	Hex Bolt 3/8-24 x 1.5"
22.	710-0599	TT Screw 1/4-20 x 0.5"
23.	711-0653	Clevis Pin
24.	712-0116	Jam Nut
25.	784-5682	Handle Suppt. Bracket 3/8 RH
26.	714-0104	Cotter Pin
27.	732-0145	Spring
28.	732-0193	Spring
29.	732-0746	Torsion Spring
30.	735-0199A	Rubber Bumper
31.	736-0105	Bell Washer
32.	784-5681	Handle Suppt. Bracket 3/8 LH
33.	736-0509	Special Washer
34.	747-0877	Cam Rod
35.	748-0362	Cam Handle Lock
36.	748-0363	Handle Lock Pawl
37.	784-5619A	Shift Handle
38.	784-5679	Handle Suppt. Bracket 5/8 LH
39.	714-0507	Cotter Pin