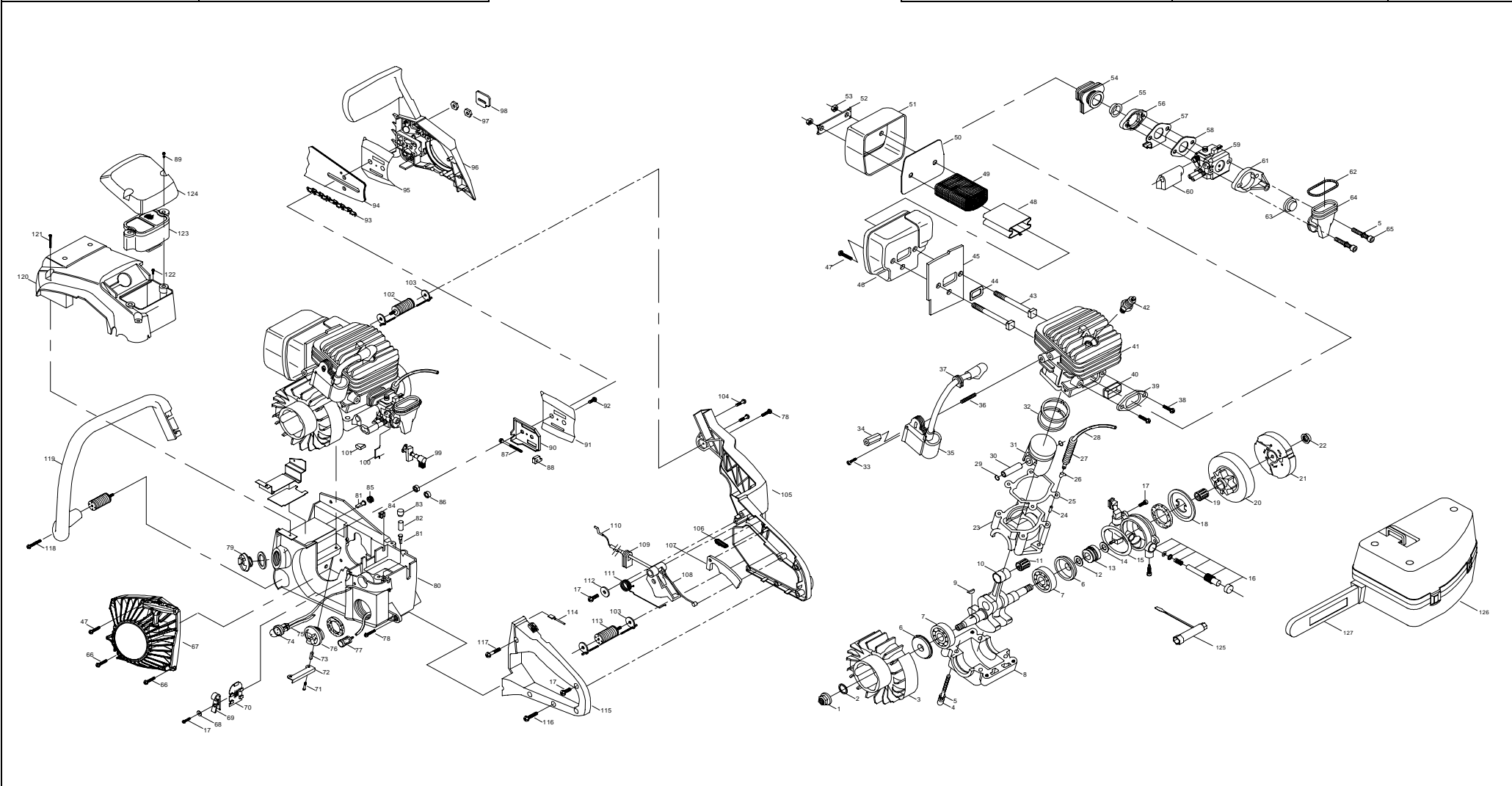




# SERVICE SPARE PARTS LIST

SPECIFY MODEL NO. WHEN ORDERING PARTS	
50CC 20" Gas Chain Saw	
MODEL NO.	TB5020CC

DATE	REVISED DATE	PAGE
5/25/2005	N/A	1/2





**SERVICE SPARE PARTS LIST**

<b>SPECIFY MODEL NO. WHEN ORDERING PARTS</b>		<b>DATE</b>	<b>REVISED DATE</b>	<b>PAGE</b>
<b>50CC 20" Gas Chain Saw</b>		<b>5/25/2005</b>	<b>N/A</b>	<b>2/2</b>
<b>MODEL NO.</b>	<b>TB5020CC</b>			

No.	Parts No.	Description	Q	No.	Parts No.	Description	Q	No.	Parts No.	Description	Q	No.	Parts No.	Description	Q
1	9NAB-5/16-24	NUT	1	33	9SKKBY10/24-0.75	SCREW	1	65	9SREB-10/24-1.625	SCREW	2	97	9NAZ-5/16-18	NUT	2
2	9WOC-08	NUT	1	34	9124-310205	SPACER	1	66	9SKKBY10/14-0.625	SCREW	3	98	9072-310206	PLATE	1
3	9228-31B206	FLYWHEEL	1	35	9288-310201-CH	IGNITION ASS'Y	1	67	9228-31B205	STARTER ASS'Y	1	99	9228-31C201	CHOKE ASS'Y	1
4	9SREB-10/24-2.75	SCREW	4	36	9191-310201	STUD	1	68	9WFZ-0.18	WASHER	1	100	9114-310202	ROD, CHOKE	1
5	9WFB-0.2	WASHER	7	37	9012-330301	GROMMET	1	69	9223-310201	WIRE	1	101	9013-310202	PLUG	1
6	9157-310201	SEAL	2	38	9SKKBY10/24-0.62	SCREW	2	70	9183-310202	SCREEN	1	102	9228-310213	ISOLATOR ASS'Y	1
7	9DB-620201	BEARING	2	39	9014-310203	FLANGE	1	71	9SKKBY10/24-1	SCREW	4	103	9228-310214	CABLE ASS'Y	2
8	9072-3102Y1F	CRANKCASE LOWER	1	40	9131-310202	EYELET	1	72	9043-310201	PLATE	2	104	9SGKBY10/24-0.5	SCREW	2
9	9221-310001	KEY	1	41	9292-31C201F	CYLINDER	1	73	9124-310206	SPACE	4	105	9068-310203	FRAME, REAR	1
10	9228-310203A	C'SHAFT/C'ROD ASS'Y	1	42	9295-320001	SPARK PLUG	1	74	9142-310002	PRIMER, REMOTE	1	106	9017-31C201	PLUG	1
11	9155-310201	BEARING	1	43	9STDZY10/24-2.79	SCREW	2	75	9129-310214	HOSE	1	107	9028-310201	RELEASE, TRIGGER	1
12	6014-M96A01	WASHER	1	44	9014-310208	WASHER	1	76	9228-310206	CAP, FUEL	1	108	9028-310202	TRIGGER	1
13	9073-310201	GEAR, WORM	1	45	9082-310201	BAFFLER	1	77	9182-310503	FILTER, FUEL	1	109	9124-310209	GROMMET	1
14	9WFN-0.4	WASHER	2	46	9228-310217	MUFFLER BODY ASS'Y	1	78	9SKKZY10/14-01	SCREW	2	110	9010-310201	CABLE	1
15	9076-310201	O RING	1	47	9SKKBY10/24-0.5	SCREW	2	79	9228-310207	CAP, OIL	1	111	9024-310206	SPRING	1
16	9228-310235	PUMP ASS'Y	1	48	9211-310201	PLATE	1	80	9228-310205	FUEL/OIL TANK ASS'Y	1	112	9WFB-4.9-17	WASHER	1
17	9SKKBY8/16-0.5	SCREW	6	49	9183-310201	SCREEN	1	81	9070-310002	VALVE DUCKBILL	2	113	9228-310222	ISOLATOR ASS'Y	1
18	9WDZ-0.722	WASHER	1	50	9082-310205	BAFFLER	1	82	6182-210101	FILTER	1	114	9010-310203	WIRE ASS'Y	1
19	9155-310203	BEARING	1	51	9017-310204	COVER, MUFFLER	1	83	9129-310209	HOSE	1	115	9228-310232	COVER ASS'Y, HANDLE	1
20	9228-310211	DRUM SPRKT ASS'Y	1	52	9158-310201	LOCKPLATE	1	84	9013-310201	PLUG	1	116	9SKKBY8/16-0.625	SCREW	3
21	9228-310210	CLUTCH ASS'Y	1	53	9NAC-10/24	NUT	2	85	9252-310002	FILTER	1	117	9SKKBY-8/16-1	SCREW	1
22	9NHC-09	NUT	1	54	9124-310202	BOOT, CARBURETOR	1	86	9131-310206	WASHER	2	118	95JKB-12/14-1.5	SCREW	1
23	9072-3102Y2F	CRANKCASE UPPER	1	55	9131-310203	EYELET	1	87	9214-310201	SCREW	1	119	9228-31B202	HANDLE ASS'Y	1
24	9124-310201	FITTING, PULSE LINE	1	56	9014-310204	FLANGE	1	88	9035-310201	NUT	1	120	9228-310216	COVER ASS'Y	1
25	9014-3102Y1	GASKET	1	57	9102-310202	PLATE	1	89	9214-310101	SCREW	2	121	9SKKBY10/14-02	SCREW	2
26	9036-310201	CLAMP, WIRE HOSE	1	58	9014-310202	GASKET	1	90	9043-310203	PLATE, BAR	1	122	9SKKBY10/14-0.68	SCREW	1
27	9059-310201	CONDUIT, FLEX	1	59	9287-31C201	CARBURETOR	1	91	9043-310202	PLATE, FLANGE	1	123	9228-310204	AIR CLEANER ASS'Y	1
28	9129-310004	HOSE	1	60	9124-310203	BOOT	1	92	9SKKBY6/19-0.375	SCREW	1	124	9067-310202	COVER	1
29	9CA-0.46	RING	2	61	9014-31C201	FLANGE	1	93	9220-31B203	20" CHAIN	1	125	9042-310201	WRENCH	1
30	9PC-10-32.5	PIN	1	62	9024-310202	SPRING	1	94	9040-31B203	20" BAR	1	126	9120-MD0701	CARRY CASE	1
31	9290-31C201	PISTON	1	63	9131-310204	EYELET	1	95	9082-310204	PLATE	1	127	9017-310214	SCABBARD	1
32	9189-31C201	RING, PISTON	2	64	9124-310204	BOOT	1	96	9228-310241	CHAIN BRAKE ASS'Y	1				

<b>REVISION</b>	<b>DATE</b>
	<b>May-05</b>