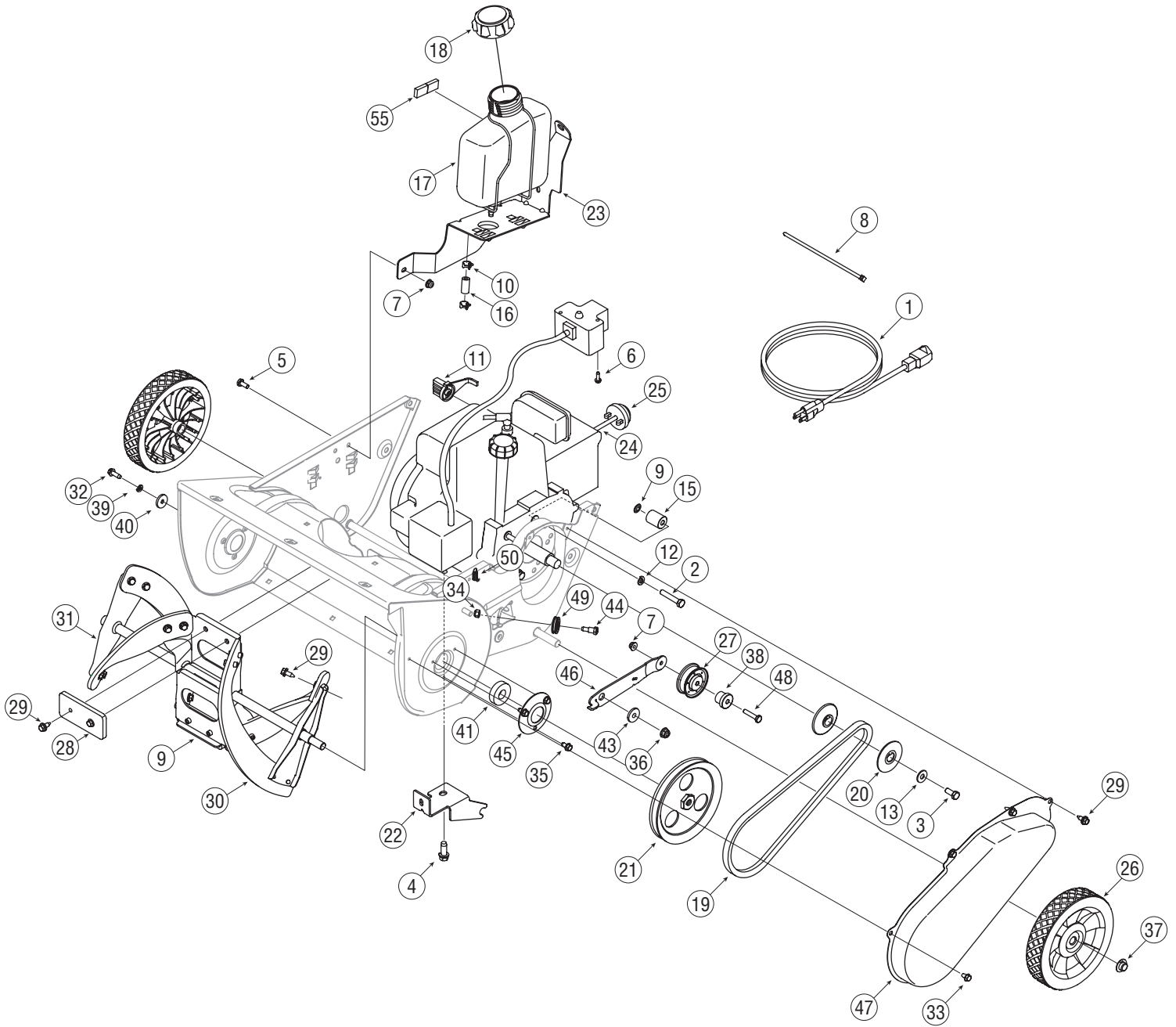


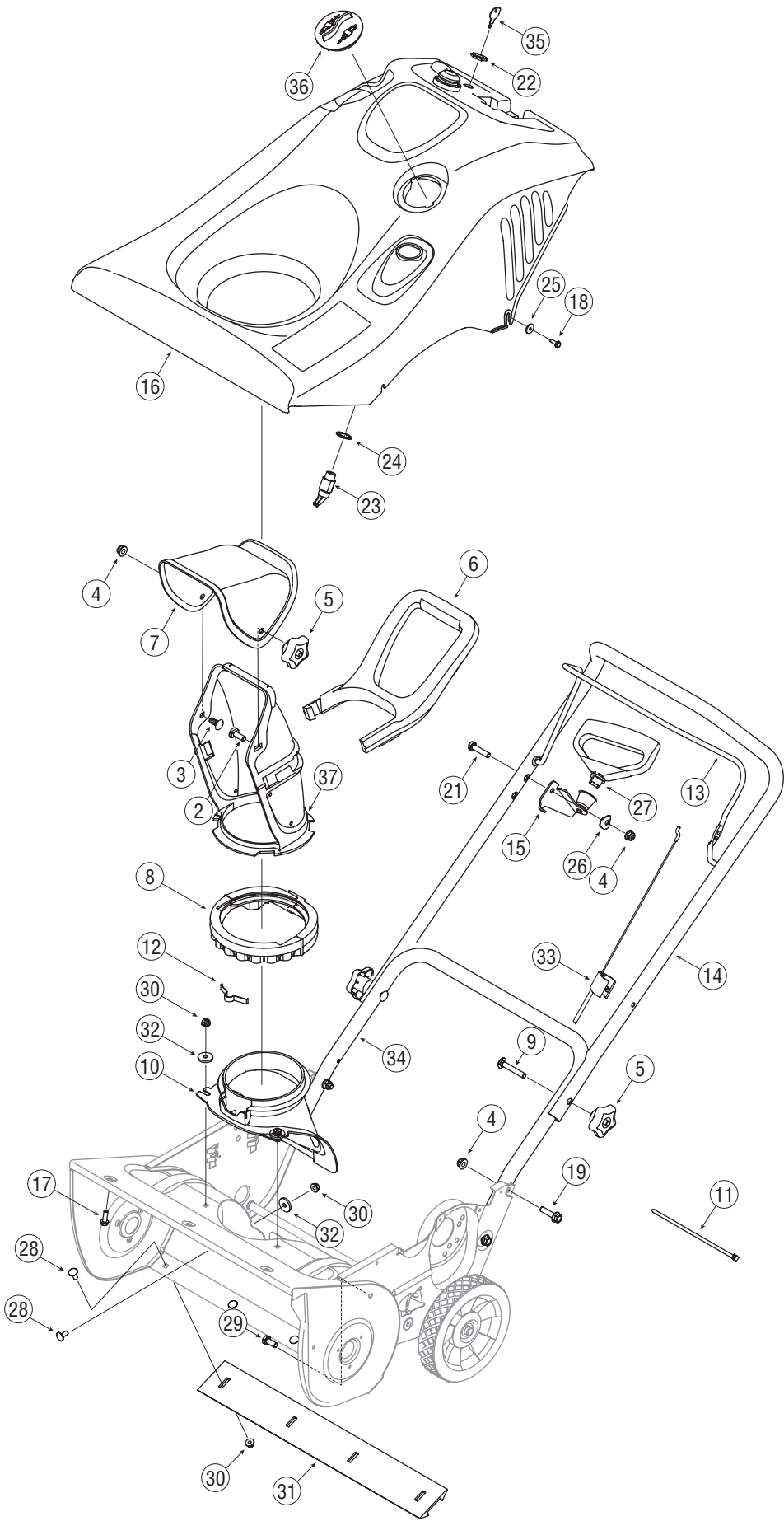
# Model Series 2B5-295



REF NO.	PART No.	DESCRIPTION	Qty.	REF NO.	PART No.	DESCRIPTION	Qty.
1	629-0071	Extension Cord	1	26	734-04204	Wheel 5 Lug Diamond Design	2
2	710-0409	Hex Screw, 5/16-24 x 1.75	4	27	684-04168	Idler Pulley (1/4" hole)	1
3	710-0627	Hex Screw, 5/16-24 x .75	1	28	735-04033	Rubber Paddle	2
4	710-0654A	Self Tapping Screw, 3/8-16 x 1	2	29	710-0896	Hex Screw, 1/4-20 x .62	24
5	710-0751	Hex Screw, 1/4-20 x .62	1	30	735-04032	Crescent Spiral	4
6	710-1003	Screw, #10-16 x .625	2	31	684-04228	Auger Assembly	1
7	712-04064	Hex Flange Lock Nut, 1/4-20	9	32	710-0642	Hex Screw 1/4-20 x .75 Gr. 5	1
8	726-0154	Push Mount Cable Tie	1	33	710-0653	Self-tapping Screw 1/4-20 x .375	1
9	684-04228	Auger Assembly	1	34	712-0896	Hex Lock Nut 1/4-28	1
10	726-0205	Clamp, Hose	2	35	710-0352	Self-tapping Screw, 1/4-14 x .375"	6
11	731-2825	Knob, Choke	1	36	712-04063	Hex Flange Lock Nut, 5/16-18	1
12	736-0119	Washer, Lock 5/16	4	37	726-0299	Push Cap, 1/2"	2
13	736-0242	Flat Washer .340 x .872 x .060	1	38	750-04571	Shoulder Spacer .260 x .785 x .538	1
14	747-04236	Gas Tank Support Wire	1	39	736-0329	Lock Washer, 1/4	1
15	750-04297B	Spacer, Engine	4	40	736-0176	Flat Washer .265 x .938 x .120	1
16	751-0535	Hose, Fuel Line	18	41	741-04188	Ball Bearing .625 x 37 x 12	2
17	751-10023	Tank, Fuel	1	42	684-04227	Auger Assembly Housing	1
18	751-10278	Cap, Fuel	1	43	748-0234	Shoulder Spacer .25	1
19	754-0101A	V-Belt, 1/2	1	44	738-0924A	Carriage Screw 1/4-28	1
20	756-0416B	Pulley Half, .625 ID x 2.25 OD	2	45	790-00249	Bearing Cup	2
21	756-04232	Pulley, 1/2 x 6.0 OD	1	46	790-00238	Idler Brkt. w/ brake (Pulley hole 1/4")	1
22	790-00216	Bracket, Engine	1	47	790-00045A	Belt Cover	1
23	790-00134	Bracket Support Gas Tank	1	48	710-0106	Hex Screw, 1/4-20 x 1.00 Gr. 5	1
24	7511152847	Primer Hose Line	4	49	756-0625	Cable Roller	1
25	7512B1476	Primer	1	50	732-0357A	Extension Spring	1

NOTES: For a proper working machine, use Factory Approved Parts. V-belts are designed to engage and disengage safely. A substitute (non OEM) V-belt can be dangerous by not disengaging completely.

NOTE: Snow thrower features/components vary by model. NOT all parts listed above and pictured on the previous page are standard equipment.



REF NO.	PART NUMBER	DESCRIPTION	Qty.
1	684-04127	Chute Assembly (Incl. Ref. 37-41)	1
2	710-04071	Carriage Bolt 5/16-18 x 1.0"	1
3	710-0451	Carriage Bolt 5/16-18 x 0.750"	1
4	712-04063	Flange Lock Nut, 5/16-18	6
5	720-04072	Star Knob Assembly	1
6	731-04388A	Chute Handle	1
7	731-04426A	Upper Chute	1
8	731-04353	Ring-Lower Chute	1
9	710-04532	Carriage Bolt 5/16-18 x 2.0 Gr. 5	2
10	731-04886	Chute, Adapter 5" Dia	1
11	725-0157	Cable Tie	1
12	732-04111	Chute Adjustment Spring	1
13	747-04159	Bail, Gull Wing	1
14	749-04106	Upper Handle, Gull Wing	1
15	684-0178	Mitten Grip Bracket	1
16	684-04211	Shroud Assembly, Gray (Incl. Spark Plug Cover)	1
17	710-0895	Screw, 1/4-15 x .75	3
18	710-1003	Self-tapping Screw, #10-16 x .625"	5
19	710-1090	Hex Flange Screw, 5/16-18 x 1.25	2
20	710-1882	Hex Flange Screw 5/16-18 x 1.50 Gr. 5	2
21	710-3083	Hex Screw, 5/16-18 x 1.375	1
22	712-0252	Hex Nut 5/8-32 x .12 Special	1
23	725-2018	Key Switch-Electric Start	1
24	736-0225	Lock Washer Internal .625 x 1.058	1
25	736-0400	Flat Washer .194" x .62" x .063	5
26	736-0451	Saddle Washer .320 x .93	1
27	7510009636	Recoil Handle, Mitten	1
28	710-0134	Screw, 1/4-20 x .62	8
29	710-3008	Truss Machine Screw, 5/16-18 x .75	1
30	712-04064	Hex Flange Lock Nut, 1/4-20	9
31	731-1033	Shave Plate, 19.88	1
32	736-0176	Flat Washer .265 x .938 x .120	4
33	746-04237	Control Cable	1
34	749-04114	Lower Handle	1
35	725-0201	Ignition Key	2
36	684-0189	Spark Plug Cover	1
37	731-04127	Lower Chute 5" Dia.	1