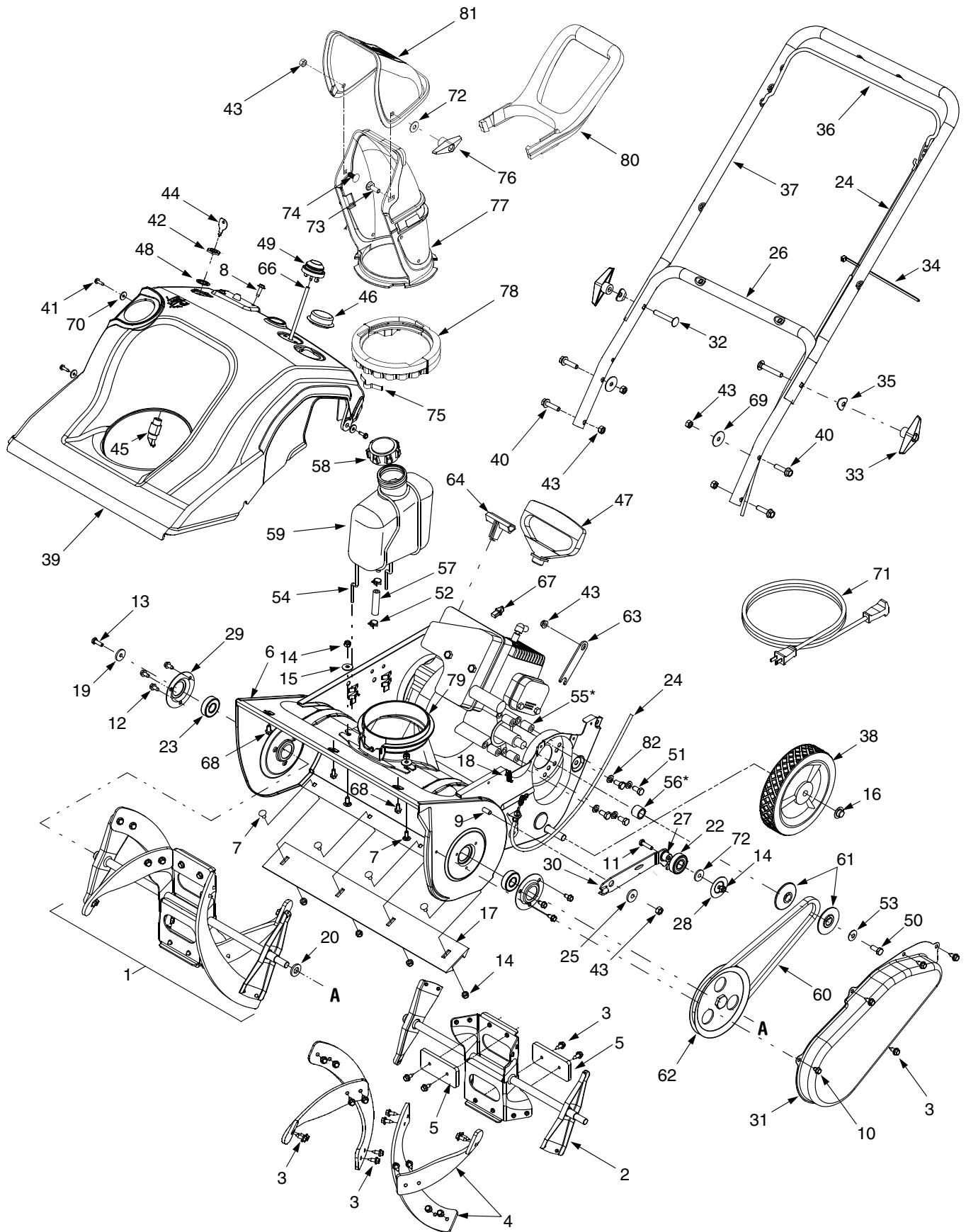


# SECTION 10: PARTS LIST



REF. NO.	PART NO.	DESCRIPTION	REF. NO.	PART NO.	DESCRIPTION
1	684-04027A	Auger Assembly Complete, 21"	44	725-0201	Key
2	684-04025	Auger Weldment Assembly, 21"	45	725-2018	Key Switch
3	710-0896	Self-tapping Screw, 1/4-14 x 0.625"	46	731-1133C	Plastic Cap, 1.75 Dia x .72
4	735-04032	Rubber Spiral	47	7510009636	Recoil Handle (Mitten Grip)
5	735-04033	Rubber Paddle	48	736-0225	Lock Washer Internal, .625 x 1.058
6	684-04028	Auger Housing Assembly 21"	49	7512B1476	Primer Button
7	710-0134	Carriage Bolt, 1/4-20 x .62"	50	710-0627	Hex Screw, 5/16-24 x .75 Gr. 75
8	710-1003	Screw, #10-16 x .625	51	710-0805*	Hex Screw, 5/16-18 x 1.50 Gr. 5
9	710-3008	Screw, 5/16-18 x .75		710-3025**	Hex Screw, 5/16-18 x .625 Gr. 5
10	710-0653	Self-tapping Screw, 1/4-20 x .375	52	726-0205	Hose Clamp
11	710-0597	Hex Screw, 1/4-20 x 1.00 Gr. 5	53	736-0242	Cupped Washer, .340 x .872 x .060
12	710-1005	Hex Cap Screw, 1/4-14 x .50"	54	747-04150	Gas Tank Wire Support
13	710-0433	Hex Cap Screw, 1/4-20 x .625"	55	750-0589*	Spacer, .325 ID x .625 OD x .88
14	712-04064	Hex Flange Lock Nut, 1/4-20	56	750-0716*	Spacer
15	736-0176	Flat Washer, .265 x .938 x .120	57	751-0535-17	Fuel Line
16	726-0299	Push Cap, 1/2"	58	751-10049	Fuel Cap
17	731-1033	Shave Plate, 2.66 x 19.88	59	751-10023	Fuel Tank, 2 Quart
18	732-0357A	Extension Spring, .33 OD x 1.12	60	754-0367*	V-Belt, 3/8
19	736-0176	Flat Washer, .265 x .938 x .120		754-0101A**	V-Belt, 1/2
20	736-0326	Flat Washer, .510 x 1.00 x .125	61	756-0416B	Pulley Half, .625 ID x 2.25 OD
22	741-0919	Ball Bearing	62	756-0550*	Pulley, 3/8 x 1/2-20 x 6.0
23	741-0600	Ball Bearing, 17 x 40 x 12		756-0475**	Pulley, 1/2 x 1/2-20 x 6.0
24	746-04091	Clutch Cable	63	790-00048	Mounting Bracket Support
25	748-0234	Shoulder Spacer	64	7519630	Recoil Handle
26	749-04114	Lower Handle	65	712-3004A	Hex Flange Lock Nut 5/16-18 Gr. 5
27	750-04230	Flange Spacer	66	723-0345	Primer Tube
28	790-00062	Belt Keeper	67	7511824110	Choke Lever Knob
29	784-5174	Bearing Cup	68	710-04187	Hex Screw, 1/4-15 x .50
30	790-00039	Idler Bracket w/ Brake	69	736-0362	Flat Washer, .320 x 1.25
31	790-00045	Belt Cover	70	736-0400	Flat Washer, .194 x .62 x .063
32	710-0487	Carriage Bolt, 5/16-18 x 2.0	71	629-0236	Extension Cord, 2-Prong
33	720-0284	Handle Knob Assembly, 5/16-18	72	736-0159	Flat Washer, .349 x .879 x .063
34	725-0157	Cable Tie	73	710-04071	Carriage Screw, 5/16-18 x 1.0
35	736-0451	Saddle Washer, .320 ID x .93	74	710-0451	Carriage Bolt, 5/16-18 x .075
36	747-04165	Bail	75	732-04111	Chute Adjustment Spring
37	749-1092A	Upper Handle	76	720-0284	Handle Knob Assembly, 5/16-18
38	734-04070	Wheel-3 spoke, 7 x 1.61	77	731-04127	Lower Chute 5" Dia
39	684-04043*	Shroud Assembly	78	731-04353	Lower Chute Ring
	684-04044**	Shroud Assembly	79	731-04886	Chute Adapter, 5" Dia
40	710-1882	Hex Flange Screw 5/16-18 x 1.50 Gr. 5	80	731-04388	Chute Handle
41	710-1003	Hex Cap Screw, #10-16 x .625"	81	731-04426	Upper Chute w/ Export Label
42	712-0252	Hex Nut, 5/8-32 x .12	82	736-0119	Lock Washer, 5/16
43	712-04063	Hex Flange Lock Nut, 5/16-18, Gr. 5			

\* Model 240 only

\*\* Model 250/S250, 250/S250 & 230/S230

**IMPORTANT:** For a proper working machine, use Factory Approved Parts. **V-belts** are designed to engage and disengage safely. A substitute (non OEM) V-belt can be dangerous by not disengaging completely.

**NOTE:** Snow thrower features/components vary by model. NOT all parts listed above and pictured on the previous page are standard equipment.