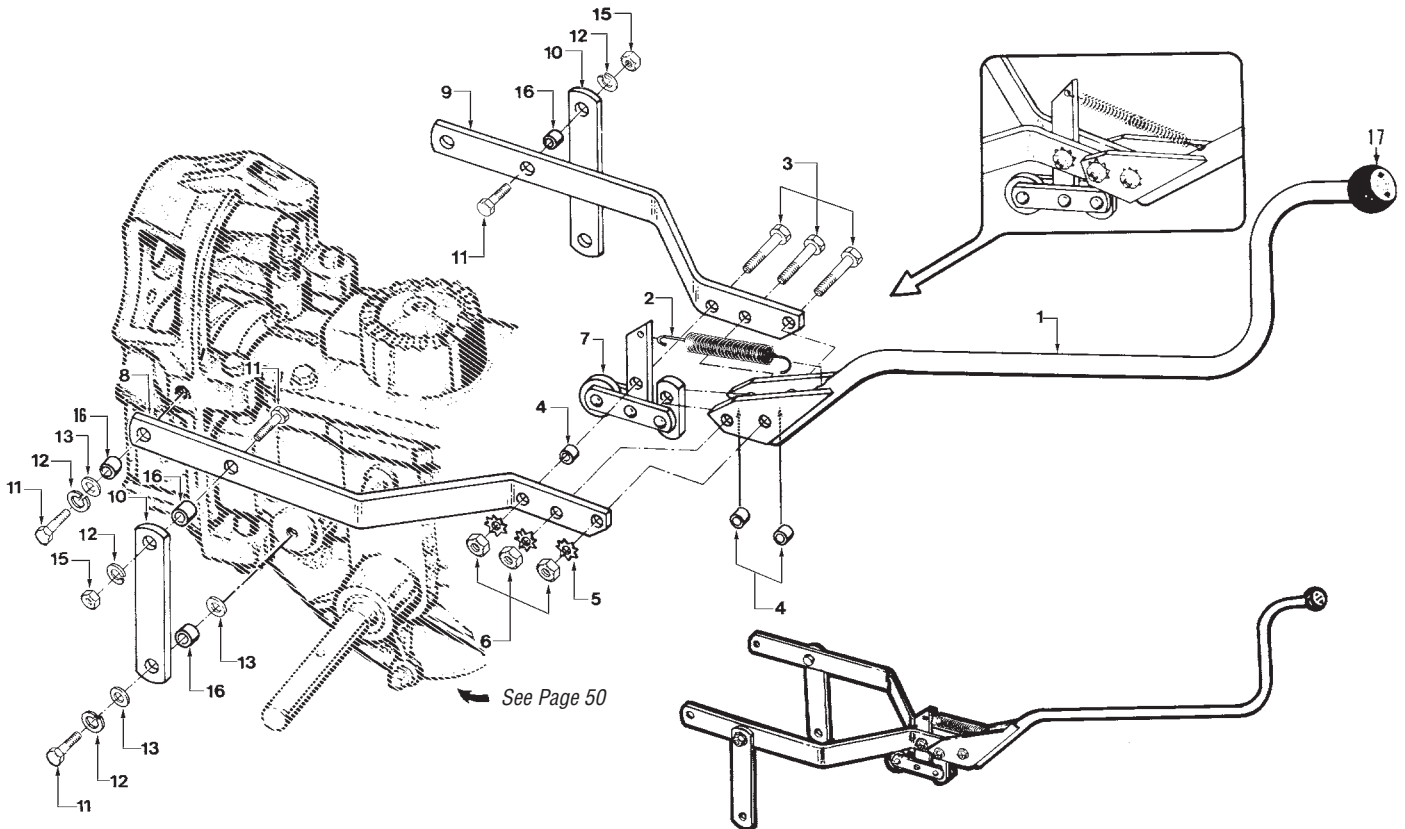


MODELS 21A-682J, 21AE686N & 21AE682L

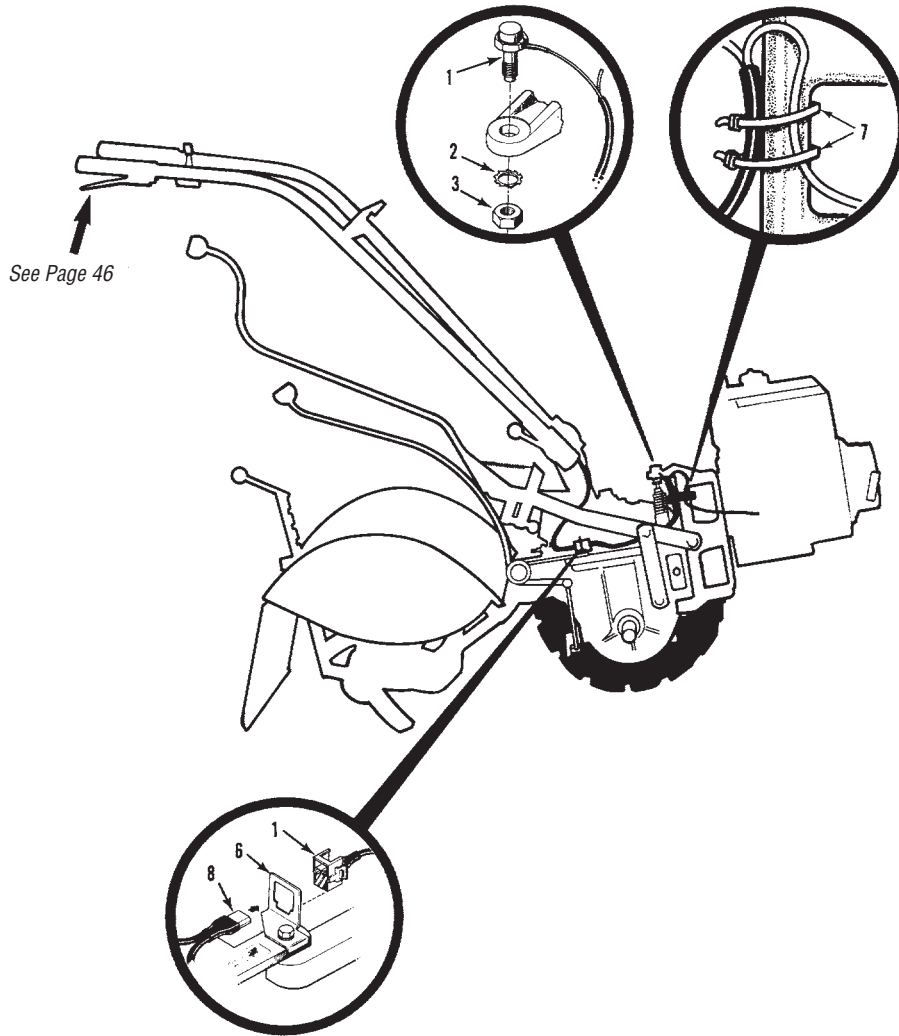
WHEELS/TINES/PTO DRIVE LEVER & YOKE ASSEMBLY



| REF No. | PART No. | DESCRIPTION | QTY. |
|---------|-----------|---|------|
| 1 | 647-04006 | Lever Assembly-Wheels/Tines/ PTO Drive (Includes Ref. 17)..... | 1 |
| 2 | 1908156 | Spring-clutch pawl..... | 1 |
| 3 | 710-0805 | Bolt-hex hd., 5/16-18 x 1-1/2"..... | 3 |
| 4 | GW-2447 | Bushing-3/8"..... | 3 |
| 5 | 1177548 | Lockwasher-external tooth, 5/16"..... | 3 |
| 6 | 712-0267 | Nut-hex, 5/16"-18..... | 3 |
| 7 | 1916265 | Roller Assembly..... | 1 |
| 8 | GW-2165-1 | Yoke-left side..... | 1 |

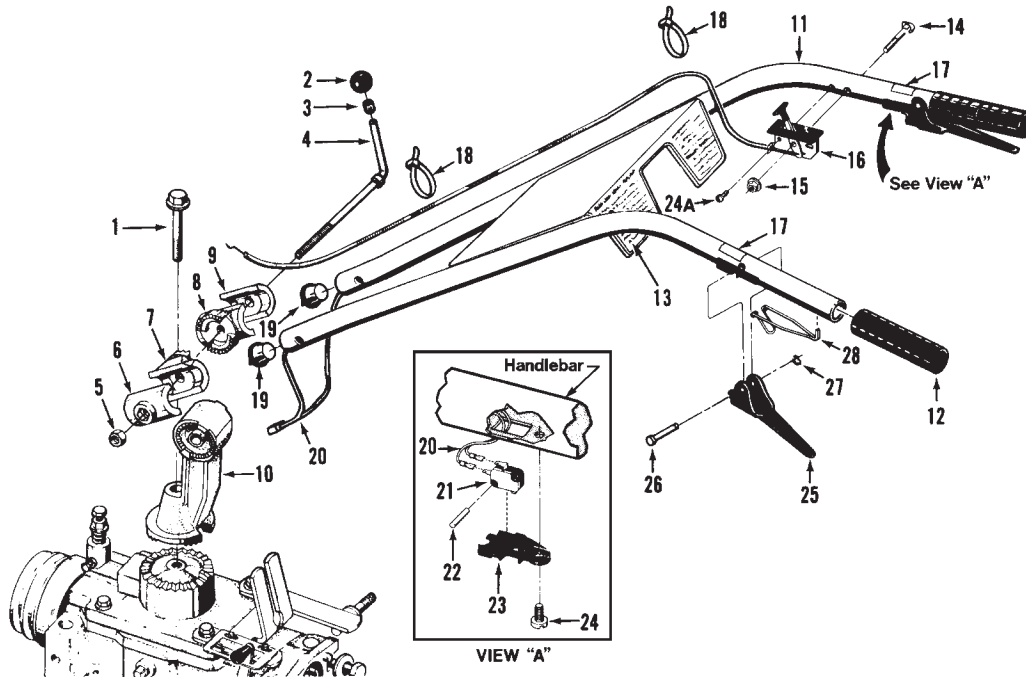
| REF No. | PART No. | DESCRIPTION | QTY. |
|---------|-----------|--|------|
| 9 | GW-2165-2 | Yoke-right side..... | 1 |
| 10 | GW-2164 | Link-yoke pivot, left & right, 6-7/8" long..... | 2 |
| 11 | 710-0514 | Bolt-hex hd., 3/8-16 x 1"..... | 6 |
| 12 | 736-0169 | Lockwasher-spring lock, 3/8"..... | 6 |
| 13 | 736-3050 | Washer-flat, 3/8", S.A.E..... | 6 |
| 15 | 712-0798 | Nut-hex, 3/8"-16..... | 2 |
| 16 | 1113-1 | Bushing-spacer, 19/64" (.300")..... | 6 |
| 17 | GW-2595 | Knob..... | 1 |

FORWARD INTERLOCK SYSTEM



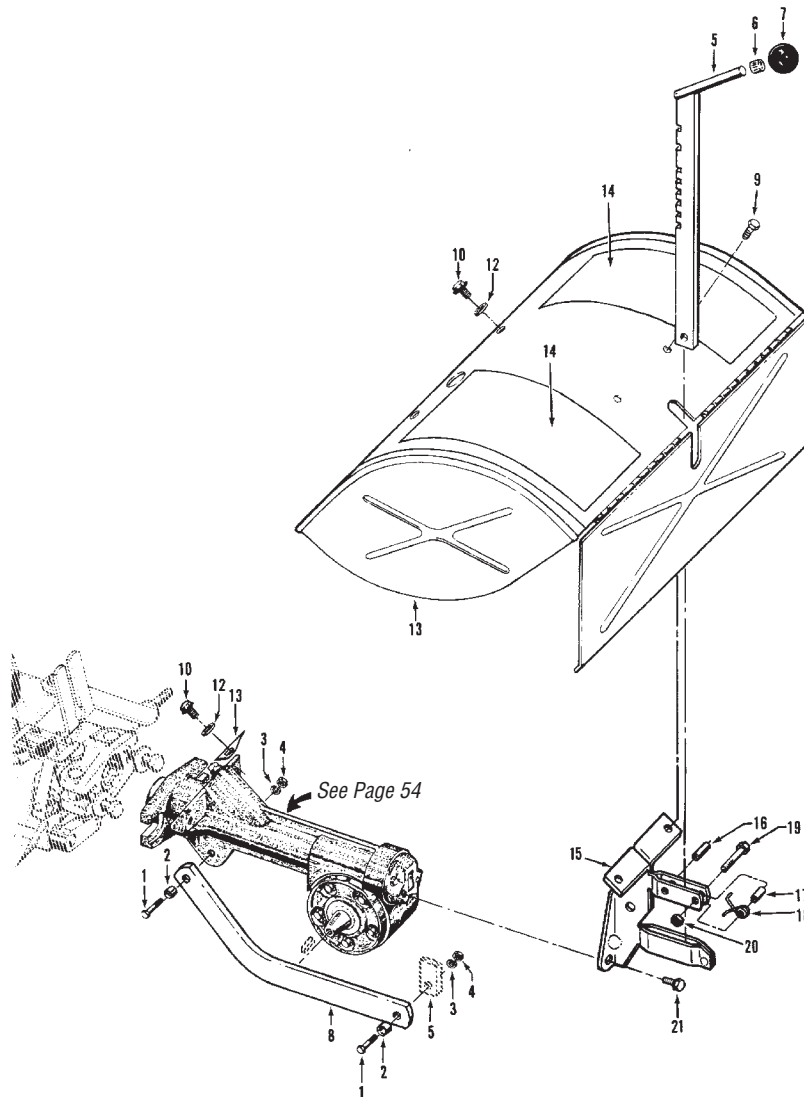
| REF No. | PART No. | DESCRIPTION | QTY. | REF No. | PART No. | DESCRIPTION | QTY. |
|---------|-----------|---|------|---------|----------|--|------|
| 1 | 629-04017 | Engine Wire Harness Assy–forward interlock system (Incl. one red and one black wire, plug connector, neutral switch and PVC tubing. Parts not available separately..... | 1 | 2 | GW-9971 | Lockwasher–external tooth, 7/16"..... | 1 |
| | | | | 3 | 1186246 | Nut–hex, 7/16"-20 | 1 |
| | | | | 6 | GW-9205 | Clip–for plug connector | 1 |
| | | | | 7 | 725-0157 | Tie–plastic | 2 |
| | | | | 8 | GW-2551 | Handlebar Wire Harness Assy–(see page 46, Ref. No. 20) | 1 |

HANDLEBAR ASSEMBLY



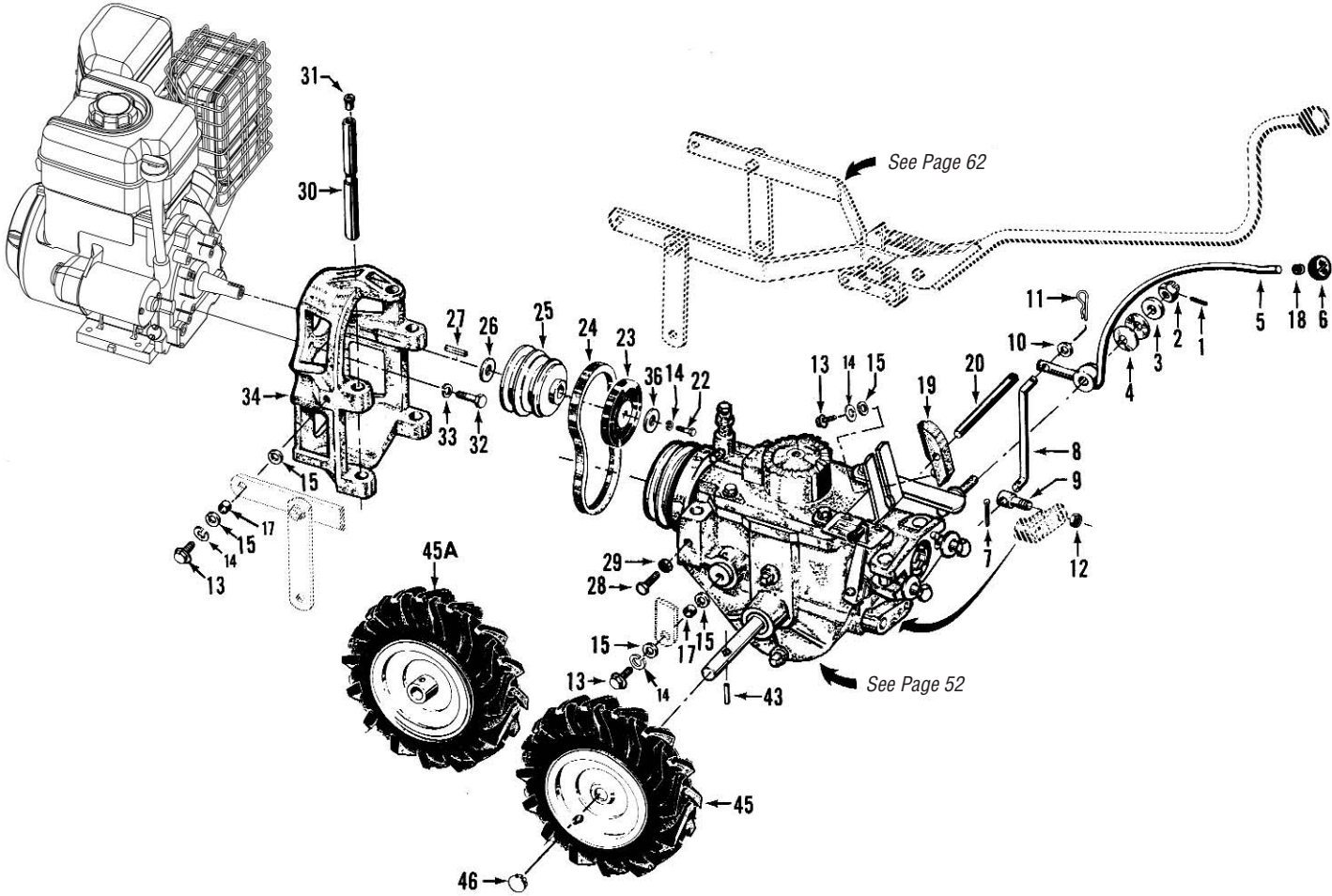
| REF No. | PART No. | DESCRIPTION | QTY. | REF No. | PART No. | DESCRIPTION | QTY. |
|---------|-----------|---|------|---------|-----------|---|------|
| 1 | GW-9548 | Bolt-Hex hd., flanged self-locking Grade 5, 1/2-13 x 3-1/2" | 1 | 17 | 777120946 | Decal-Forward Interlock Lever | 2 |
| 2 | GW-9119 | Knob-handlebar height adjustment | 1 | 18 | 725-0157 | Tie-plastic | 2 |
| 3 | GW-9120 | Ring-retaining (tolerance ring) | 1 | 19 | GW-9219 | Plug-wire harness retainer | 2 |
| 4 | GW-2657 | Stud-handlebar height adjustment | 1 | 20 | GW-2551 | Handlebar Wire Harness Assy-forward interlock system..... | 1 |
| 5 | 1186233 | Nut-hex, 1/2"-13..... | 1 | 21 | GW-9250 | Handlebar Switch-forward interlock system..... | 2 |
| 6 | GW-1021-1 | Clamp-left, handlebar height adjustment | 1 | 22 | GW-9385 | Lock Pin-handlebar switch..... | 2 |
| 7 | GW-2542-1 | Ratchet-left, handlebar height adjustment | 1 | 23 | GW-2543 | Switch Housing-handlebar switch. | 2 |
| 8 | GW-2542-2 | Ratchet-right, handlebar height adjustment | 1 | — | GW-2563 | Switch Assembly | 1 |
| 9 | 1901784 | Clamp-right, handlebar height adjustment | 1 | 24 | 1186009 | Screw-pan head, 10-24 x 1/2", thread-forming | 2 |
| 10 | GW-2534A | Base-handlebar mounting..... | 1 | 24A | GW-9733 | Screw-phillips head, 10-32 x 1/2", thread-forming | 1 |
| 11 | GW-2717 | Handlebars | 1 | 25 | 786-04003 | Lever-Operator Presence Control.. | 2 |
| 12 | GW-9125 | Grip-handlebars | 2 | 26 | GW-9199 | Pivot Pin-forward interlock lever... | 2 |
| 13 | 777122026 | Decal-Control panel | 1 | 27 | GW-9514 | Retaining Ring-clip ring-forward interlock lever..... | 2 |
| 14 | 1918111 | Bolt-curved hd, GR5, 1/4-20 x 2" .. | 1 | 28 | GW-9387 | Return Spring-fwd interlock lever . | 2 |
| 15 | 1186389 | Nut-hex, flanged self-locking, whiz lock, 1/4"-20..... | 1 | - | 777D06526 | Label - Troy-Bilt Horse..... | 1 |
| 16 | 1909286 | Throttle Control & Cable..... | 1 | - | 777D06527 | Label - Troy-Bilt Horse "Big Red" . | 1 |

DEPTH REGULATOR & TINE HOOD ASSEMBLIES



| REF No. | PART No. | DESCRIPTION | QTY. | REF No. | PART No. | DESCRIPTION | QTY. |
|---------|-----------|---|------|---------|-----------|---|------|
| 1 | 710-3005 | Bolt-hex hd., 3/8-16 x 1-1/4" | 2 | 12 | GW-9929 | Washer-flat, 5/16" | 2 |
| 2 | GW-1113-1 | Bushing-19/64" (.300" lg.) | 2 | 13 | 686-04027 | Hood | 1 |
| 3 | 736-0169 | Lockwasher-spring lock, 3/8" | 2 | 14 | 777I22027 | Decal-hood, operating inst. (LH) .. | 1 |
| 4 | 712-3017 | Nut-hex, 3/8"-16 | 2 | | 777S32049 | Decal-hood, operating inst. (RH) .. | 1 |
| 5 | GW-20795 | Bar-depth regulator | 1 | 15 | GW-2525 | Bracket | 1 |
| 6 | GW-9120 | Ring-retaining | 1 | 16 | 1185469 | Pin-roll (spiro) 1/4" x 1" | 1 |
| 7 | GW-9119 | Knob-depth regulator | 1 | 17 | GW-9534 | Spacer | 1 |
| 8 | GW-2121 | Bar-drag, depth regulator | 1 | 18 | GW-9384 | Spring | 1 |
| 9 | 710-0599 | Screw-thread-forming, 1/4-20 x 1/2" | 2 | 19 | 710-0597 | Bolt-hex hd., 1/4-20x1" | 1 |
| 10 | 1186329 | Bolt-flanged hex hd., 5/16-18 x 3/4" | 2 | 20 | 1110106 | Locknut-1/4"-20 | 1 |
| | | | | 21 | 710-04049 | Bolt-flanged hex hd., 5/16-18 x 5/8" | 2 |

WHEEL SPEED LEVER, BELT DRIVE SYSTEM, ENGINES, WHEELS



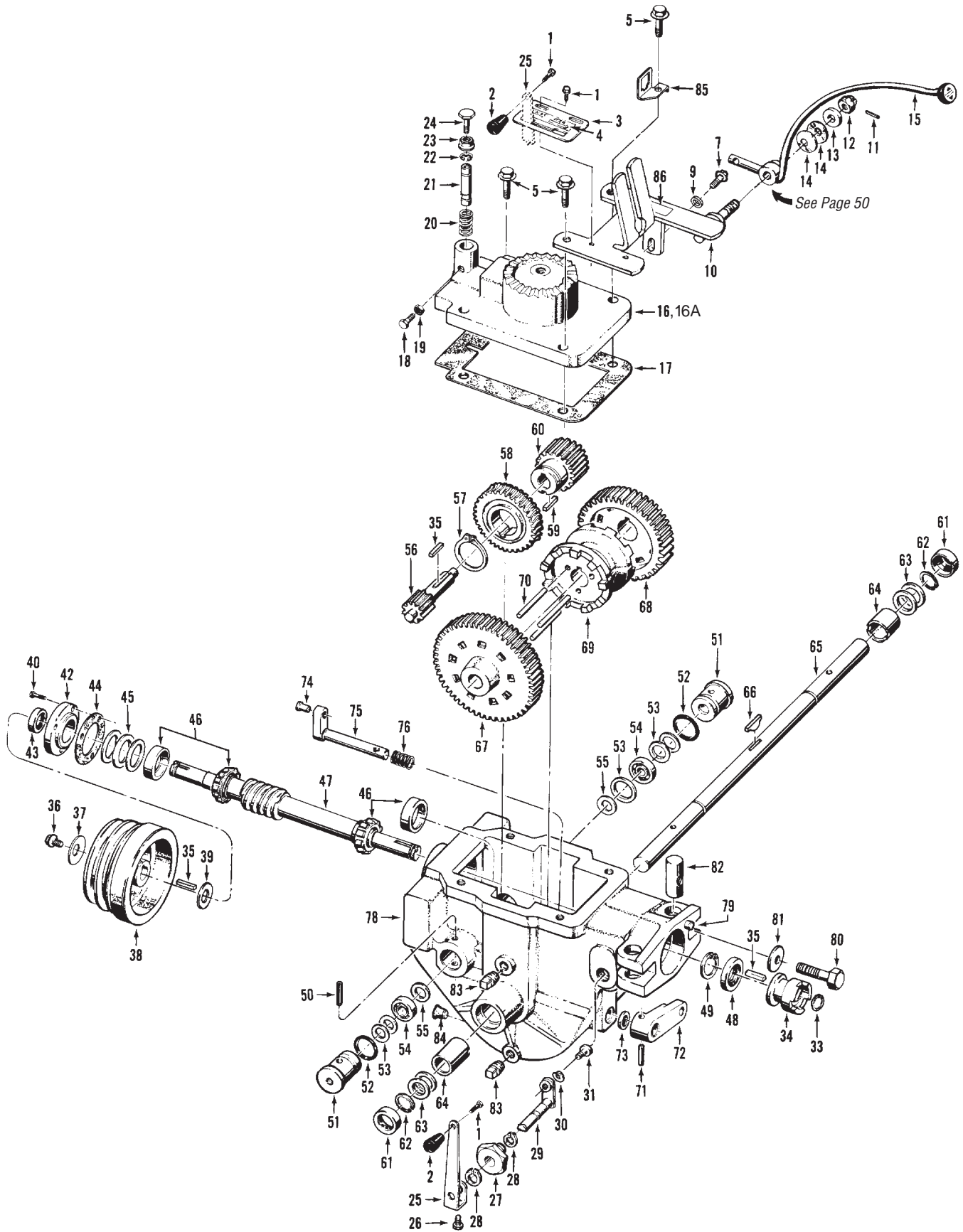
| REF No. | PART No. | DESCRIPTION | QTY. | REF No. | PART No. | DESCRIPTION | QTY. |
|--------------------------|-----------|---|------|------------------------------------|-----------|--|------|
| WHEEL SPEED LEVER | | | | ENGINES AND ENGINE MOUNT | | | |
| 1 | GW-9362 | Pin-spring, 1/8"..... | 1 | 28 | 710-0376 | Bolt-hex hd., 5/16-18 x 1", Grade 5..... | 2 |
| 2 | GW-9838 | Nut-castle (slotted), 1/2"-20 | 1 | 29 | 712-3010 | Nut, hex, 5/16-18..... | 1 |
| 3 | GW-9934 | Washer-shoulder, 1/2"..... | 1 | 30 | GW-1034 | Bar-engine mounting..... | 2 |
| 4 | GW-9932 | Washer-disc spring | 2 | 31 | GW-9147 | Plug-thread protector, red plastic.... | 2 |
| 5 | GW-2178 | Lever-wheel speed shift..... | 1 | 32 | GW-9572 | Bolt-hex hd., 5/16-24 x 1-1/8" | 4 |
| 6 | 1902240 | Knob-wheel speed shift lever..... | 1 | 33 | 736-0119 | Lockwasher-spring lock, 5/16" | 4 |
| 7 | GW-9317 | Pin-cotter, 3/32" x 1"..... | 1 | 34 | GW-2553 | Mount- engine to tiller | 1 |
| 8 | GW-1231 | Rod-connecting rod, wheel speed shift lever | 1 | 35 | * | Briggs & Stratton Engine-Recoil or electric start. (Electric start requires key switch starting system.) | 1 |
| 9 | GW-1033 | Swivel-connecting rod..... | 1 | | | | |
| 10 | 736-0275 | Washer-flat, 5/16", S.A.E. | 1 | 36 | 736-3052 | Washer, flat, .406 x 1.0 x .105..... | 1 |
| 11 | GW-9338 | Pin-hair cotter..... | 1 | - | 777S30647 | Decal-hot surface warning | 1 |
| 12 | 712-0158 | Locknut-hex hd., 5/16"-18 | 1 | WHEEL & TIRE ASSEMBLIES | | | |
| 13 | 710-0514 | Bolt-flanged hex hd., 3/8-16 x 1" | 5 | 43 | 1915072 | Pin- roll, 5/16" x 1-1/2"..... | 2 |
| 14 | 736-0169 | Lockwasher-spring lock, 3/8" | 5 | 45 | 1915056 | **Wheel & Tire Assy- bar tread, left side, 4:80 x 8" tubeless tire with valve stem, on one-piece steel wheel. | 1 |
| 15 | 736-3050 | Washer-flat, 3/8", S.A.E. | 8 | 45A | 1915057 | **Wheel & Tire Assy-bar tread, right side. Same as above but for right side of tiller..... | 1 |
| 17 | GW-1113-1 | Bushing-spacer, 19/64" (.300"lg.).... | 4 | 46 | 1902020 | Cap-wheel hub | 2 |
| 18 | GW-9120 | Ring-retaining (tolerance ring) | 1 | BELT DRIVE SYSTEM | | | |
| 19 | GW-2102 | Block- belt adjustment, 3-7/8" | 1 | | | | |
| 20 | GW-2100 | Rod- belt adjust., 7" with measuring gauge | 1 | | | | |
| 21 | 777120942 | Decal- engine stabilization | 1 | | | | |
| 22 | 1100012 | Bolt-hex hd., 3/8-24 x 1-1/2" | 1 | | | | |
| 23 | GW-2111 | Disc-reverse | 1 | | | | |
| 24 | GW-9245 | Belt-forward drive (no substitute due to extra strength required) | 1 | | | | |
| 25 | GW-1483 | Pulley-engine power take off | 1 | | | | |
| 26 | GW-1138-1 | Shim-engine pulley, 1/16" As Req'd | | | | | |
| 26 | GW-1138-2 | Shim-as above, 1/32" As Req'd | | | | | |
| 27 | GW-9303 | Key-engine pulley, 3/16"sq. x 2-1/2" 1 | | | | | |

* Contact an authorized engine dealer, Troy-Bilt dealer or the Factory for replacement engine information.

Contact an authorized engine dealer for engine service or parts. Refer to the engine name-plate for engine model and type information.

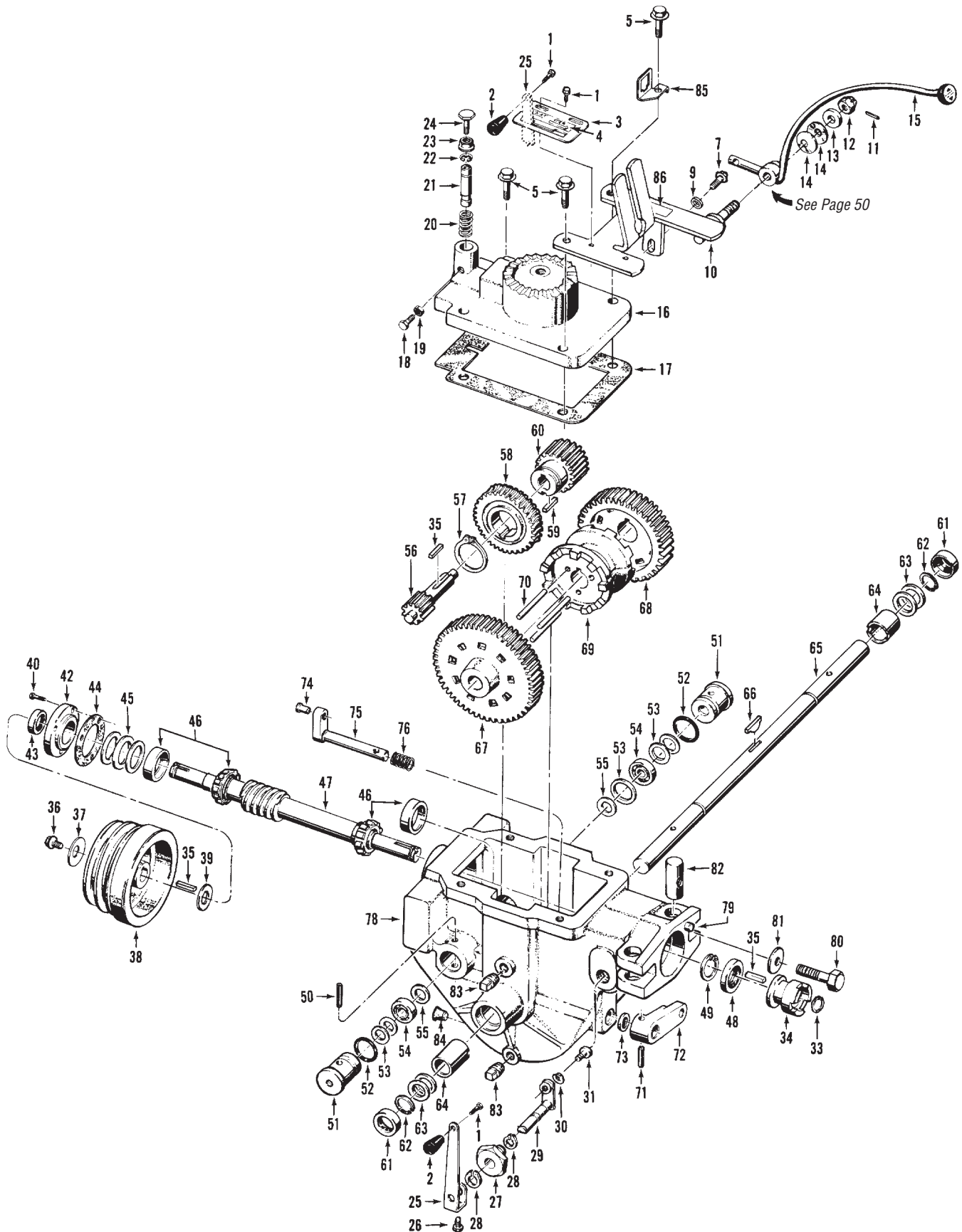
** For correct traction and directional control, Bar Tread Tires should be mounted on the tiller so the closed end of the "V" in the tire tread on top of the tire faces forward.

POWER UNIT TRANSMISSION ASSEMBLIES



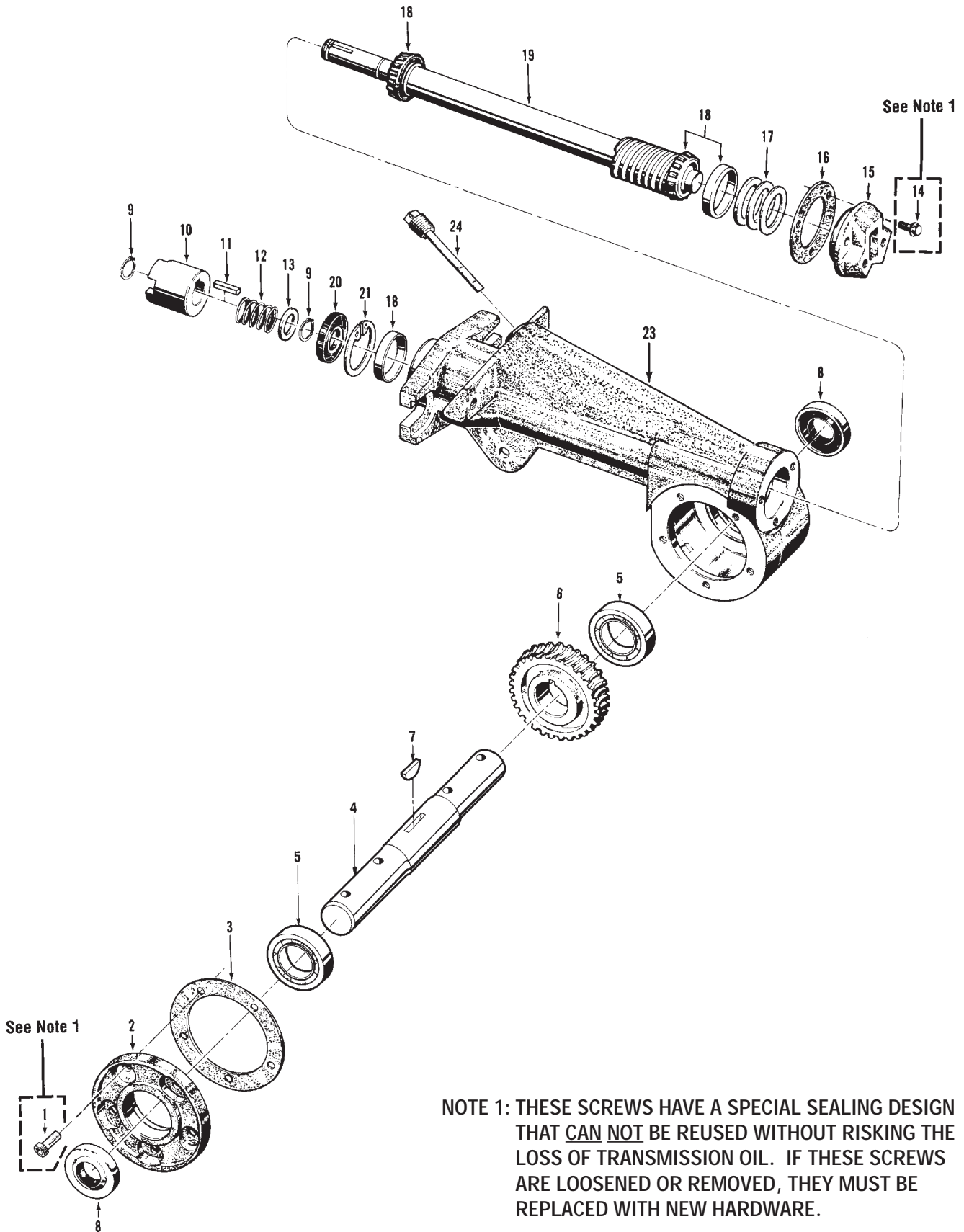
| REF No. | PART No. | DESCRIPTION | QTY. | REF No. | PART No. | DESCRIPTION | QTY. |
|--|-----------|--|------|-------------------------------|-----------|---|----------|
| TRANSMISSION COVER & SHIFT LEVER BRACKET ASSEMBLIES | | | | | | | |
| 1 | 1186299 | Bolt-hex hd., #10-32 x 3/8", self-locking flange | 3 | 35 | GW-9301 | Key-3/16 sq. x 1" | 3 |
| 2 | GW-9463 | Knob-tines/PTO clutch lever, tapered, plastic | 1 | 36 | 1100004 | Bolt-hex hd., 5/16-24 x 3/4", self-locking flange, Grade 5 | 1 |
| 3 | GW-2124 | Detent Plate-tines/PTO clutch lever | 1 | 37 | GW-9944 | Washer-disc spring (concave)..... | 1 |
| 4 | 777120945 | Decal-operating instructions, detent plate..... | 1 | 38 | GW-2107 | Pulley-transmission drive, cast iron | 1 |
| 5 | 1186349 | Bolt-flanged hex hd., 3/8-16 x 1-1/2" | 4 | 39 | GW-50027 | Washer-flat, hardened shoulder 1-1/4"..... | 1 |
| 7 | 1186329 | Bolt-flanged hex hd., 5/16-18 x 3/4", Grade 5 | 1 | 40 | 1186310 | Bolt-hex hd., 1/4-20 x 3/4", front bearing cap | 3 |
| 9 | 736-0275 | Washer-flat, 5/16", S.A.E. | 1 | 42 | 718-04007 | Cap-front bearing | 1 |
| 10 | GW-2149 | Bracket-shift levers..... | 1 | 43 | 1983632 | Seal-oil, front bearing cap | 1 |
| 11 | GW-9362 | Pin-spring, 1/8" | 1 | 44 | GW-1124-2 | Gasket-front bearing cap | 1 |
| 12 | GW-9838 | Nut-castle (slotted), 1/2"-20, call Tech Service for tightening instructions. | 1 | 45 | GW-1224-1 | Shim-front bearing cap, .010" thick | As Req'd |
| 13 | GW-9934 | Washer-shoulder, 1/2" | 1 | 45 | GW-1224-2 | Shim-as above, .030"..... | As Req'd |
| 14 | GW-9932 | Washer-disc spring | 2 | 45 | GW-1224-3 | Shim-as above, .005"..... | As Req'd |
| 15 | GW-2178 | Lever-wheel speed shift..... | 1 | 45 | GW-1224-4 | Shim-as above, .062"..... | As Req'd |
| 16 | GW-2523 | Cover-power unit transmission ... | 1 | 46 | GW-1714 | Bearing & Race (incl. one bearing GW-9400 and one cup (race) GW-9401) ... | 2 |
| 17 | GW-1123 | Gasket-transmission cover | 1 | 47 | GW-2655 | Shaft-main drive, power unit | 1 |
| 18 | 710-0376 | Bolt-hex hd., 5/16-18 x 1", Grade 5, (remove with care) | 1 | 48 | 721-04030 | Seal-oil, drive shaft, rear | 1 |
| 19 | 712-0267 | Nut-hex, 5/16"-18 | 1 | 49 | GW-9517 | Retaining Ring-(snap ring), internal..... | 1 |
| 20 | 1901439 | Spring-neutral plunger (remove with care)..... | 1 | PINION SHAFT ASSEMBLY | | | |
| 21 | GW-1035-1 | Plunger-neutral (remove with care) | 1 | 50 | 715-0121 | Pin-roll (spiral), 1/4 x 2" | 2 |
| 22 | 1901440 | Clip Ring-retains neutral plunger.. | 1 | 51 | 718-04006 | Plug-retaining, pinion bearing | 2 |
| 23 | 1186393 | Nut-hex, flange locknut, 3/8"-16 ... | 1 | 52 | GW-9604 | O-Ring-retaining plug..... | 2 |
| 24 | 1902004 | Bolt-hex hd., 3/8-16x1-1/2", threaded full length..... | 1 | 53 | GW-1132-1 | Shim-retaining plug, 1-1/64" inner dia., .033" thick (on right side only one GW-1132-1 shim is also used between bearing and washer, Ref. No.'s 54 & 55)..... | As Req'd |
| TINES/PTO CLUTCH LEVER ASSEMBLY | | | | 53 | GW-1132-2 | Shim-same as GW-1132-1, .062". | As Req'd |
| 25 | 786-04002 | Lever-eccentric, tines/PTO clutch. | 1 | 53 | GW-1132-3 | Shim-same as GW-1132-1, .010" | As Req'd |
| 26 | 710-3013 | Bolt-hex hd., 1/4-20 x 1/2" | 1 | 54 | GW-9404 | Bearing-ball, pinion shaft | 2 |
| 27 | GW-2123 | Bushing-tines/PTO clutch lever eccentric shaft | 1 | 55 | GW-1126 | Washer-pinion shaft | 2 |
| 28 | GW-9516 | Retaining Ring-(snap ring), external..... | 2 | 56 | GW-1222 | Stem Pinion-slow speed gear & shaft | 1 |
| 29 | GW-2461 | Eccentric-shaft, tines/PTO clutch lever..... | 1 | 57 | GW-9502 | Ring-retaining, external | 1 |
| 30 | GW-9911 | Lockwasher-hi-collar, 1/4"..... | 1 | 58 | GW-2656 | Worm Gear-bronze, wheel drive ... | 1 |
| 31 | GW-9672 | Screw-socket hd., 1/4-20 x 3/8" ... | 1 | 59 | GW-9300 | Key-3/16" x 5/8" | 1 |
| DRIVE SHAFT ASSEMBLY | | | | 60 | GW-1233 | Gear-fast speed pinion | 1 |
| 33 | 716-0101 | Retaining Ring-external | 1 | (continued on page 55) | | | |
| 34 | 1909139 | Dog Clutch-power unit | 1 | | | | |

POWER UNIT TRANSMISSION ASSEMBLIES
(Continued from page 53)



| REF No. | PART No. | DESCRIPTION | QTY. | REF No. | PART No. | DESCRIPTION | QTY. |
|---------------------------------|-----------|--|----------|------------------------------|-----------|--|------|
| (continued from page 53) | | | | | | | |
| WHEEL SHAFT ASSEMBLY | | | | | | | |
| 61 | 721-04031 | Seal-oil, wheel shaft | 2 | 75 | 611-04003 | Eccentric Shaft-wheel speed shifting | 1 |
| 62 | 1909950 | Retaining ring-external | 2 | 76 | GW-1441 | Spring-eccentric shaft | 1 |
| 63 | GW-1166-1 | Shim-wheel shaft, 1-1/64" inner dia., .062" thick..... | As Req'd | TRANSMISSION HOUSING | | | |
| 63 | GW-1166-2 | Shim-as above, .030" thick | As Req'd | 78 | GW-2109 | Housing-power unit transmission (Empty housing without covers, shafts, gears, seals, etc.) | 1 |
| 63 | GW-1166-3 | Shim-as above, .015" thick | As Req'd | 79 | GW-9359 | Pin-alignment..... | 1 |
| 63 | GW-1166-4 | Shim-as above, .010" thick | As Req'd | MISCELLANEOUS PARTS | | | |
| 63 | GW-1166-5 | Shim-same as above, .005" thick | As Req'd | 80 | 1100067 | Bolt-hex hd., 1/2-13 x 2" Grade 5 . | 2 |
| 64 | GW-1086 | Bushing-bronze, wheel shaft bearing | 2 | 81 | GW-9928 | Washer-disc spring (concave), domed side faces bolt head | 2 |
| 65 | 611-04025 | Shaft-wheel, 15-5/8"..... | 1 | 82 | GW-2126 | Post-with threaded hole for Ref. No. 80..... | 2 |
| 66 | GW-9357 | Key-Hi Pro, 1/4" x 1-3/4"..... | 1 | 83 | 1105620 | Plug-pipe, 1/4"..... | 2 |
| 67 | GW-1223 | Gear-slow speed, wheel drive..... | 1 | 84 | GW-9122 | Plug-red plastic, thread protector. | 1 |
| 68 | GW-1232 | Gear-fast speed, wheel drive | 1 | 85 | GW-9205 | Clip-forward interlock system plug connector (see page 47)..... | 1 |
| 69 | GW-1237 | Dog Clutch-wheel drive | 1 | 86 | 777120944 | Decal-forward interlock wire harness..... | 1 |
| 70 | GW-1112 | Pin-clutch guide, 1/4" diameter | 3 | TRANSMISSION ASSEMBLY | | | |
| ECCENTRIC SHAFT ASSEMBLY | | | | — | 618-04004 | Transmission -power unit (Does NOT include Ref. 35-39. Does NOT include Shift Lever and Bracket Assemblies, Ref. 3, 4, 10, 15, 85, 86, etc.) | 1 |
| 71 | 1911372 | Pin-roll, 3/16" x 1-1/4" (spirol) | 1 | | | | |
| 72 | 619-04000 | Lever-eccentric, wheel speed shifting | 1 | | | | |
| 73 | 721-04034 | Seal-oil, eccentric shaft | 1 | | | | |
| 74 | GW-1442 | Pin-eccentric shaft, wheel speed shifting | 1 | | | | |

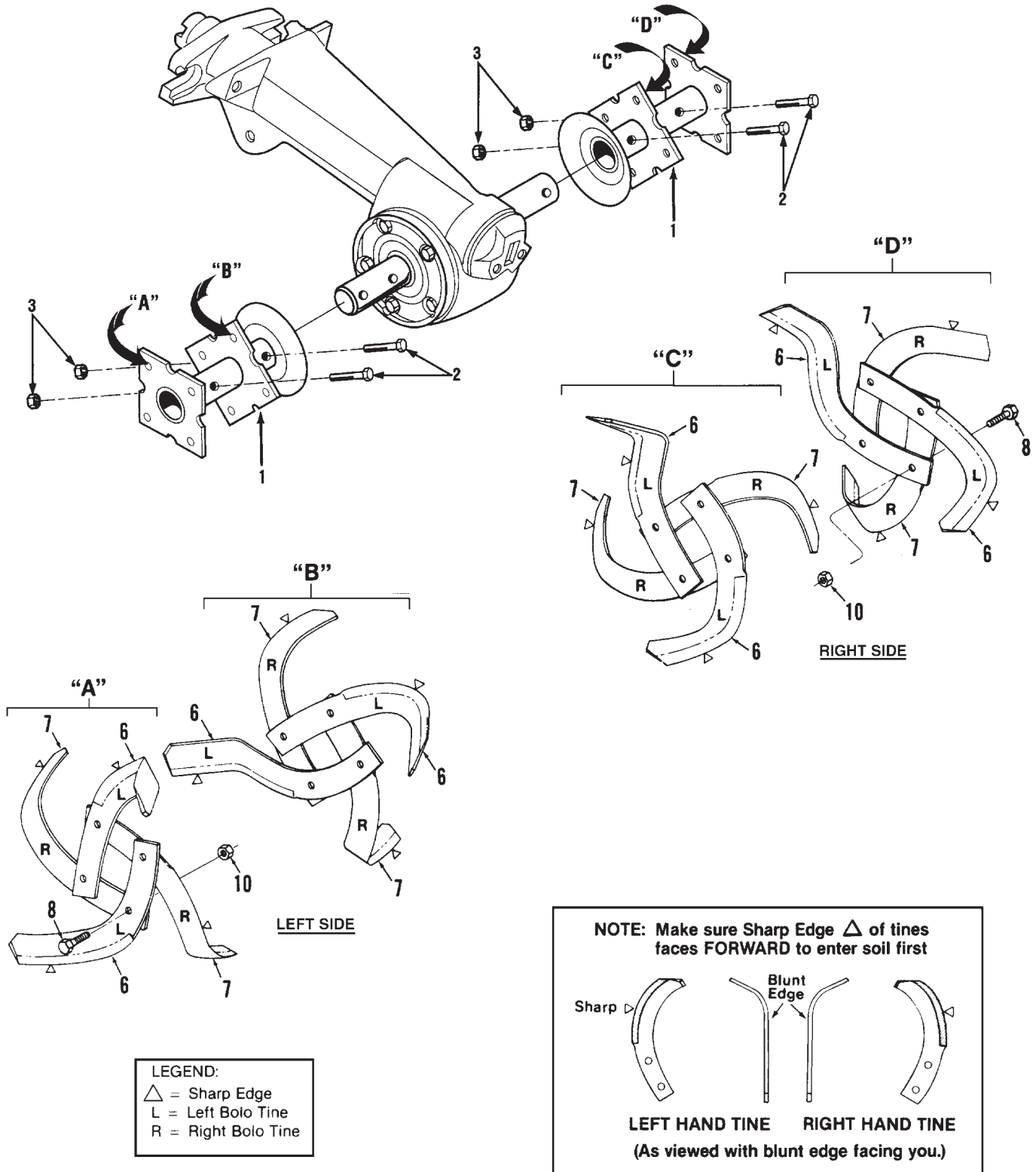
TILLER ATTACHMENT TRANSMISSION ASSEMBLIES



NOTE 1: THESE SCREWS HAVE A SPECIAL SEALING DESIGN THAT CAN NOT BE REUSED WITHOUT RISKING THE LOSS OF TRANSMISSION OIL. IF THESE SCREWS ARE LOOSENED OR REMOVED, THEY MUST BE REPLACED WITH NEW HARDWARE.

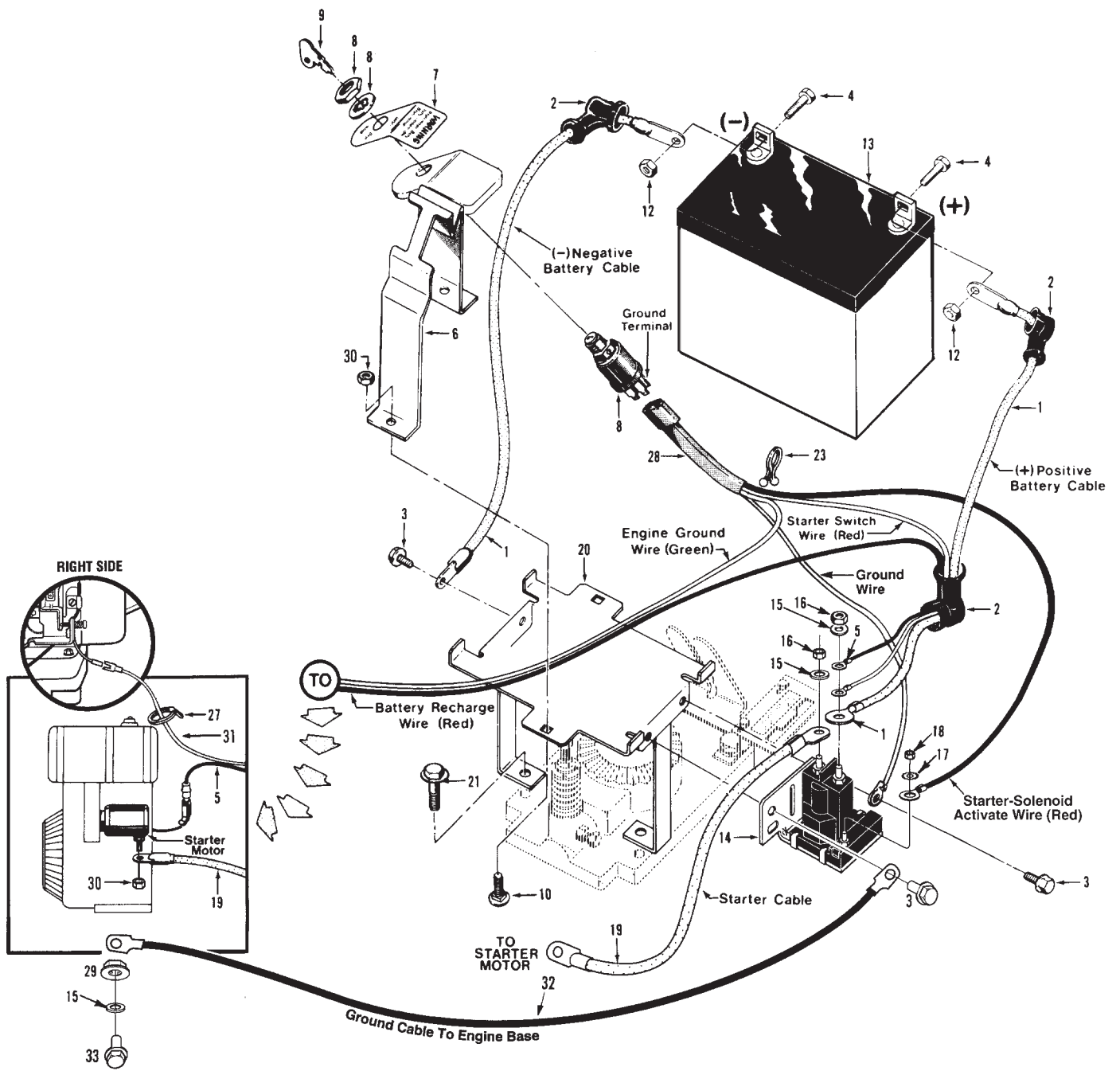
| REF No. | PART No. | DESCRIPTION | QTY. | REF No. | PART No. | DESCRIPTION | QTY. |
|------------------------------------|-----------|---|----------|--|-----------|--|----------|
| 1 | 1915068 | Screw-self-sealing, 1/4"-20 x 5/8" | 5 | 17 | GW-1224-2 | Shim-same as above, .030" thick..... | As Req'd |
| 2 | GW-20873 | Cover-tiller housing | 1 | 17 | GW-1224-3 | Shim-same as above, .005" thick..... | As Req'd |
| 3 | GW-1129-1 | Gasket-tiller housing cover, .010" thick..... | As Req'd | 17 | GW-1224-4 | Shim-same as above, .062" thick..... | As Req'd |
| 3 | GW-1129-2 | Gasket-same as above, .030" thick..... | As Req'd | 18 | GW-1714 | Bearing & Race | 2 |
| 4 | 711-04082 | Shaft-tiller tine..... | 1 | | | (incl. one bearing GW-9400 and one cup (race) GW-9401) | |
| 5 | 741-3037 | Ball Bearing..... | 2 | 19 | GW-2653 | Shaft-main tiller drive | 1 |
| 6 | 1901976 | Worm Gear-bronze, tiller tine shaft | 1 | 20 | 721-04030 | Seal-oil, drive shaft, front | 1 |
| 7 | GW-1104 | Key-tiller tine shaft, woodruff key. | 1 | 21 | GW-9517 | Retaining Ring-internal..... | 1 |
| 8 | 721-04035 | Seal-oil, tiller tine shaft..... | 2 | | | | |
| TILLER DRIVE SHAFT ASSEMBLY | | | | TRANSMISSION HOUSING AND DIPSTICK | | | |
| 9 | 716-0101 | Retaining Ring-external | 2 | 23 | 1901971 | Housing-tiller attachment (Empty housing without shafts, gears, seals, dipstick, etc.) | 1 |
| 10 | 1909138 | Dog Clutch-tiller drive shaft..... | 1 | 24 | 1909157 | Dipstick-oil, tiller attachment..... | 1 |
| 11 | GW-9301 | Key-3/16" x 1" | 1 | TRANSMISSION ASSEMBLY | | | |
| 12 | GW-2127 | Spring-dog clutch..... | 1 | — | 618-04003 | Transmission -Tiller (Includes Ref. 1-24) | 1 |
| 13 | GW-1138-1 | Shim-dog clutch, 1/16"(.62") thick.. | 1 | | | | |
| 14 | 1915069 | Screw-self-sealing, 1/4"-20 x 7/8" | 3 | | | | |
| 15 | GW-1115 | Cap-rear bearing..... | 1 | | | | |
| 16 | GW-1124-2 | Gasket-rear bearing cap | 1 | | | | |
| 17 | GW-1224-1 | Shim-front bearing cap, .010" thick..... | As Req'd | | | | |

BOLO TINE ASSEMBLIES



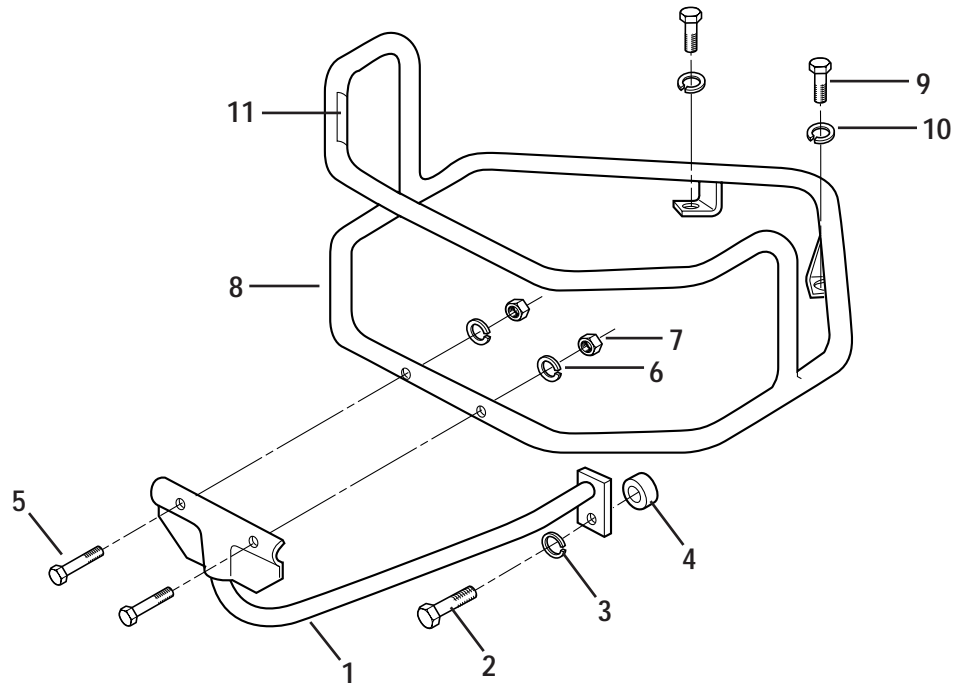
| REF No. | PART No. | DESCRIPTION | QTY. | REF No. | PART No. | DESCRIPTION | QTY. |
|-------------------------------|-------------|---|------|--|-----------|--|------|
| STANDARD TILLING TINES | | | | CUSTOM TILLING TINES | | | |
| 1 | 1901975 | Tine Holder—welded steel, fits left or right sides..... | 2 | Special hard-faced, high-chrome carbon alloy tines that are thicker than standard Bolo Tines. These tines better resist the abrasive action of rocky, gritty or sandy soil as compared to standard Bolo Tines, and are especially suited for custom tilling or market gardening. | | | |
| 2 | 710-3096 | Bolt—hex hd., 3/8-16 x 2"..... | 4 | | | | |
| 3 | 712-3000 | Locknut—hex, 3/8"-16 | | | | | |
| 6 | GW-1270-1A | Bolo Tine—single, left hand. Used on left and right side tine assy. Tine is stamped either "EL" or "AL". (incl Ref 8 & 10, two each) | 8 | | | | |
| 7 | GW-1270-2A | Bolo Tine—single, right hand. Used on left and right side tine assy. Tine is stamped either "ER" or "AR" (incl Ref 8 & 10, two each) | 8 | | | | |
| 8 | 710-3005 | Bolt—hex hd., 3/8-16 x 1"..... | 16 | --- | GW-10802 | Custom Tilling Tine Kit—(Incl. eight each of Part GW-2475-1 and GW-2475-2 tines and sixteen each of Ref. No.'s 8 and 10..... | 1 |
| 10 | 712-0375 | Locknut—hex, 3/8"-16..... | 20 | --- | GW-2475-1 | Bolo Tine, Custom Tilling—single, left hand..... | 8 |
| --- | 290-253-081 | Tine Replacement Kit—unassembled (Incl. eight each of Ref. No.'s 6, and 7, sixteen each of Ref. No.'s 8 and 10). Includes easy-to-follow installation instruction. DOES NOT INCLUDE tine holders, holder mounting hardware, or tine shaft keys..... | 1 | --- | GW-2475-2 | Bolo Tine, Custom Tilling—single, right hand..... | 8 |

ELECTRIC START SYSTEM



| REF No. | PART No. | DESCRIPTION | QTY. | REF No. | PART No. | DESCRIPTION | QTY. |
|---------|-----------|--|------|---------|-----------|---|------|
| 1 | GW-96515 | Cable–battery, positive and negative terminals..... | 2 | 14 | GW-96514 | Solenoid–starter, includes nuts and washers for cables and wires... | 1 |
| 2 | GW-97020 | Boot–terminal insulating | 3 | 15 | 736-0119 | Lockwasher–5/16" | 3 |
| 3 | GW-9552 | Screw–self-threading, 1/4-20 x 1/2" | 3 | 16 | 1186211 | Nut–hex, 5/16"-24 | 2 |
| 4 | 1186309 | Bolt–hex hd., 1/4-20 x 5/8" | 2 | 17 | 736-0147 | Lockwasher–external tooth, #10.. | 1 |
| 5 | 1901894 | Wire–recharge (red) | 1 | 18 | GW-9853 | Nut–hex, #10-32,..... | 1 |
| 6 | GW-2614 | Battery Hold-down Clamp–with attached Key Switch Plate | 1 | 19 | GW-96510 | Cable–solenoid to starter motor .. | 1 |
| 7 | 777S30648 | Decal–ignition switch instruc..... | 1 | 20 | GW-2557 | Battery Bracket | 1 |
| 8 | 725-0267A | Key Switch–includes two ignition keys (Ref. No. 9), one lockwasher, and one mounting nut (lock-washer and nut not available separately)..... | 1 | 21 | 1186349 | Bolt–flanged hex hd., 3/8-16 x 1-1/2" | 2 |
| 9 | 725-0201 | Key–ignition, one pair..... | 1 | 23 | GW-9265 | Tie–plastic, wire retaining..... | 1 |
| 10 | 1186073 | Bolt–carriage, 1/4-20 x 1-1/4" | 2 | 27 | 725-0157 | Tie–plastic | 2 |
| 11 | 1100241 | Lockwasher–spring lock, 1/4" | 2 | 28 | 1908118 | Wire Harness & Connecting Terminal Assembly | 1 |
| 12 | 712-3006 | Nut–hex, 1/4"-20 | 2 | 29 | 712-3010 | Nut–flange lock, 5/16"-18 | 1 |
| 13 | 725-1706 | Battery–12 volt, 270 CCA..... | 1 | 30 | 1186389 | Locknut–hex, 1/4"-20 | 3 |
| | | | | 31 | 629-04018 | Ground Wire Assembly..... | 1 |
| | | | | 32 | 1901202 | Cable–ground, solenoid to engine block | 1 |
| | | | | 33 | 710-3180 | Bolt–flange lock, 5/16-18 x 1"..... | 1 |

BUMPER ATTACHMENT



| REF No. | PART No. | DESCRIPTION | QTY. | REF No. | PART No. | DESCRIPTION | QTY. |
|---------|-------------|---|------|---------|-----------|-------------------------------------|------|
| --- | 290-255-081 | Bumper Attachment. Includes Ref. Nos. 1 through 11) | 1 | 6 | 736-0119 | Lockwasher - spring lock, 5/16" .. | 2 |
| 1 | 1910730 | Brace - bumper bottom | 1 | 7 | 712-3010 | Nut - hex, 5/16"-18 | 2 |
| 2 | 710-3181 | Bolt - hex hd., 1/2-13 x 1-1/2" | 1 | 8 | 1910731 | Bumper wraparound | 1 |
| 3 | 736-0921 | Lockwasher - spring lock, 1/2" | 1 | 9 | 710-0514 | Bolt - hex hd., 3/8-16 x 1" | 2 |
| 4 | 1909748 | Spacer, 1/2" | 1 | 10 | 736-0169 | Lockwasher - spring lock, 3/8" | 2 |
| 5 | 710-0805 | Bolt - hex hd., 5/16-18 x 1-1/2" ... | 2 | 11 | 777S30653 | Decal - for bumper | 1 |