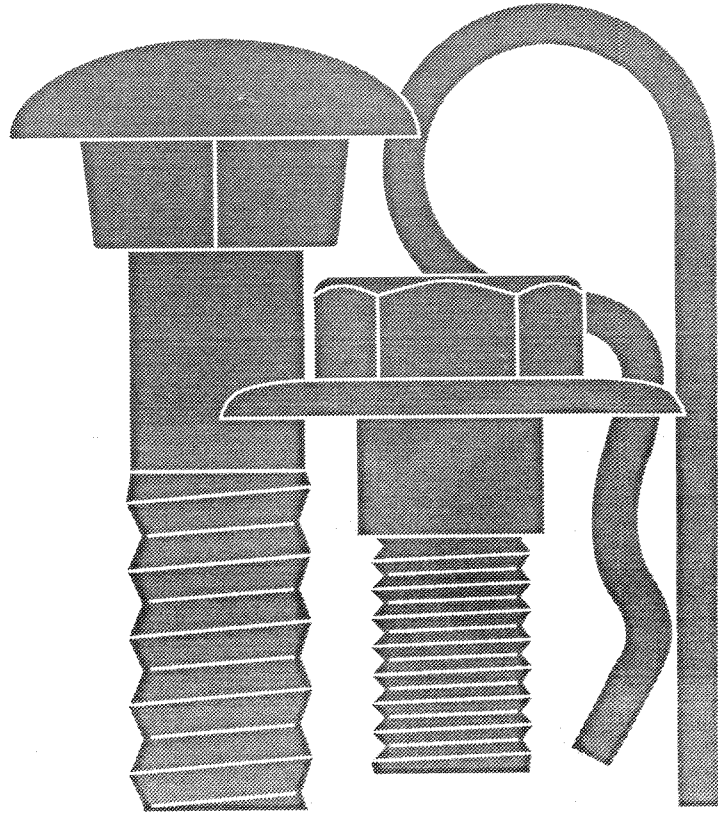


Do Not REMOVE

FILE COPY



R REPAIR PARTS

Lawn Rider

Model No. RE1036A

Rally

127612 11.08.90

Printed in U.S.A.

HOW TO USE THIS MANUAL

This manual is designed to provide the customer with a means to identify the parts on his/her tractor when ordering repair parts. The illustrations may or may not represent the actual assemblies; therefore, it is not recommended to use this manual as a guide to assemble or disassemble the tractor. Some hardware and parts are drawn larger in order to more readily identify them.

Each tractor has its own model number.

The model number for your tractor can be found on the fender under the seat.

When ordering parts, always give the following information:

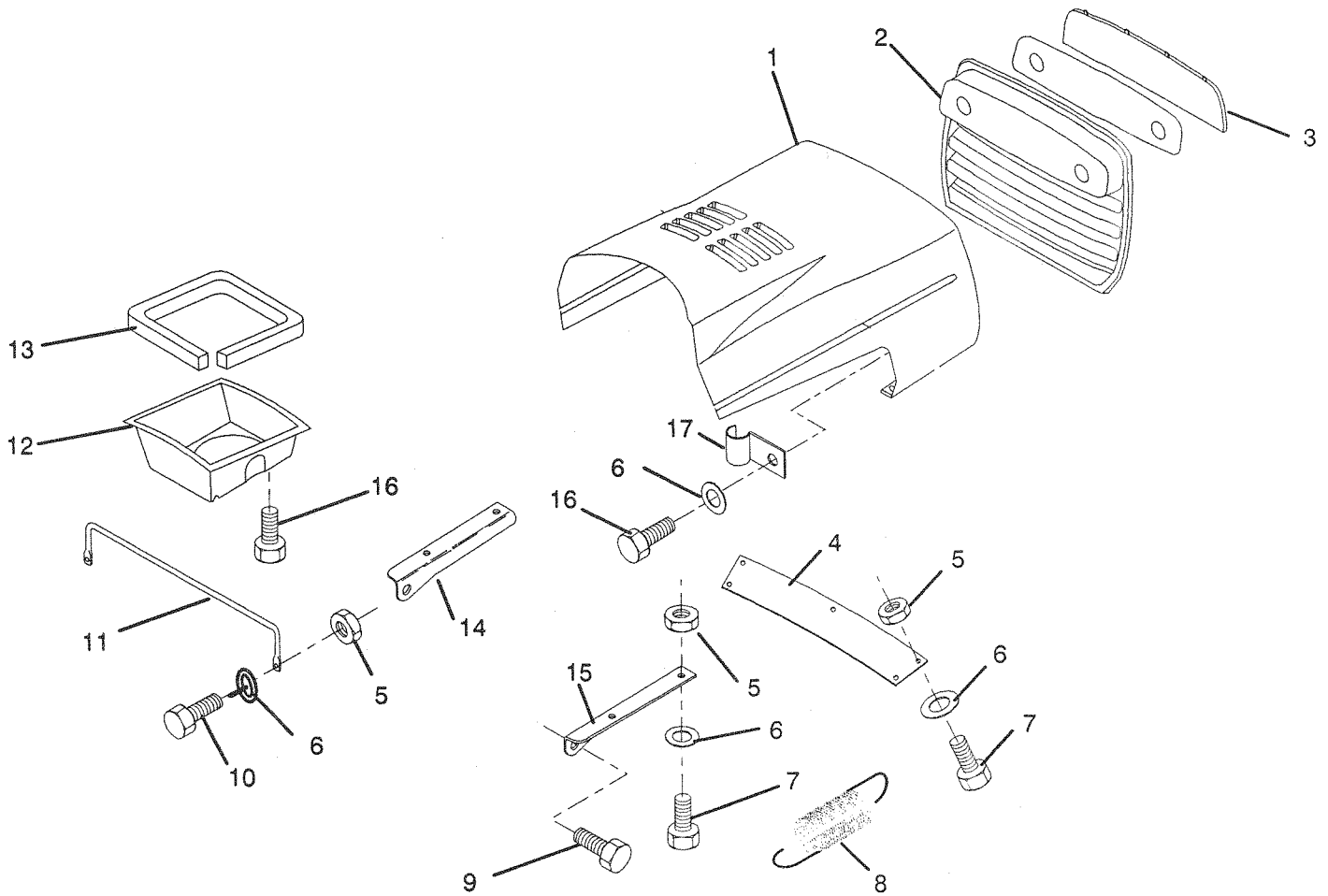
- Product – "Lawn Rider"
- Model Number – "RE1036A"
- Part Number
- Part Description

TABLE OF CONTENTS

DASH	6
ENGINE / THROTTLE	11
ELECTRICAL	19
FENDER / CHASSIS	4
FRONT AXLE	9
GROUND DRIVE	12
HOOD	3
MOWER LIFT LEVER	14
MOWER DECK	15 – 18
BRAKE / REAR MOWER LIFT ASM.	10
SEAT	5
SECTOR GEAR / AXLE SUPPORT	8
STEERING WHEEL	7
TRANSAXLE	13

ILLUSTRATED PARTS BREAKDOWN

HOOD



KEY NO.	PART NO.	DESCRIPTION
1	122032X014	Hood
2	127176X366	Grill
3	127178	Lens
4	122550X423	Strap, Grill
5	73510400	Nut, Hex, Keps 1/4-20 UNC
6	19091016	Washer, 9/32 x 5/8 x 16 Gauge
7	74780410	Bolt, Hex Fin. 1/4- 20 UNC x 5/8 Grade 5
8	124657X	Extension, Spring
9	126675X	Bolt, Shoulder, Thread Forming
10	74780412	Bolt, Hex Fin. 1/4-20 x 3/4 Gr. 5
11	123693X	Brace, Hood
12	123840X	Duct, Air
13	120537X	Strip, Foam

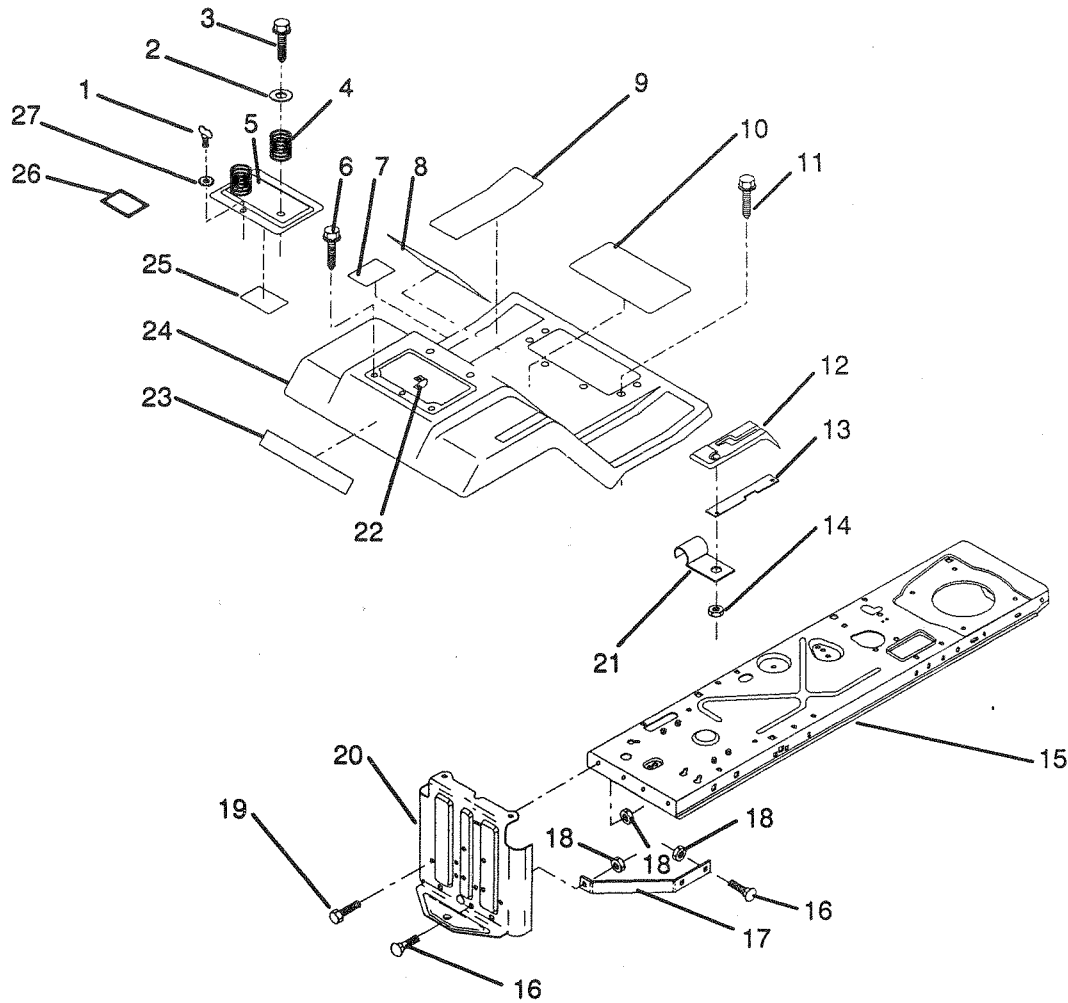
KEY NO.	PART NO.	DESCRIPTION
14	122548X	Bracket, Hood, L.H.
15	122549X	Bracket, Hood, R.H.
16	17411310	Screw, Fin. Hex #13-16 Hi-Lo x 5/8
17	2751R	Clip, Fuel Line
-	126860X	Decal, Light Box
-	128195	Decal, Stripe, Hood, L.H.
-	128194	Decal, Stripe, Hood, R.H.
-	127032	Decal, 10 H.P.
-	127036	Decal, Grill Logo

NOTE: All component dimensions given in U.S. inches
1 inch = 25.4 mm

HARDWARE SHOWN LARGER FOR EASIER IDENTIFICATION

ILLUSTRATED PARTS BREAKDOWN

FENDER / CHASSIS



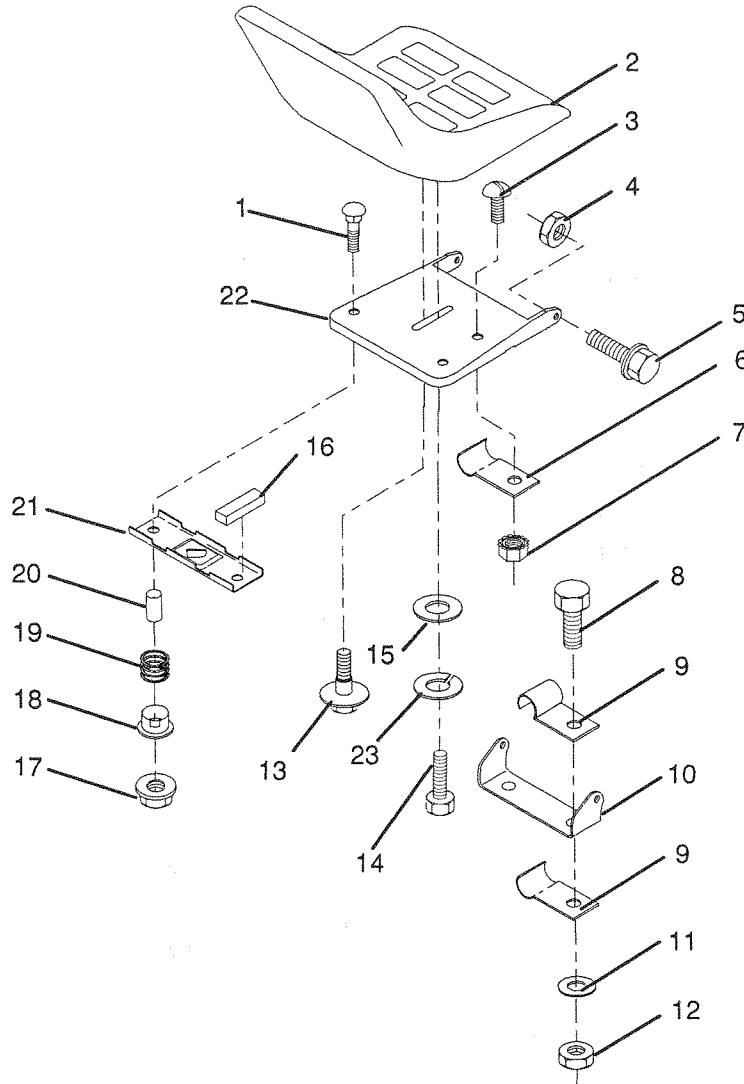
KEY NO.	PART NO.	DESCRIPTION	KEY NO.	PART NO.	DESCRIPTION
1	123650X	Stud, 1/4 Turn	16	72140506	Bolt, Carriage
2	19132012	Washer 13/32 x 1- 1/4 x 12 Ga.	17	123379X	Brace, Drawbar
3	17490612	Screw, Hex Wsh. Thd. Roll. 3/8-16 x 3/4	18	73680500	Nut, Crownlock 5/16-18
4	124181X	Spring, Compression, Seat	19	74760512	Bolt, Hex Head 5/16-18 UNC x 3/4
5	122008X419	Door, Fender	20	121904X	Drawbar
6	17490508	Screw, Hex Wsh. Thd. Roll. 5/16-18 x 1/2	21	126470X	Clip, Insulated
7	123408X	Decal, Ground Drive Schematic	22	105839X	Receptacle, 1/4 Turn
8	120822X	Decal, Caution	23	127037	Decal, Fender
9	124144X	Pad, Footrest	24	124332X419	Fender/Footrest
10	123637X	Decal, Operating Instructions	25	121549X	Decal, Battery Caution
11	17490512	Screw, Hex Wsh. Thd. Roll. 5/16-18 x 3/4	26	125690X	Decal, 100 DBA
12	126933X	Console, Shift Control	27	105838X	Retainer 1/4 Turn
13	124602X	Bar, Shift Lock			
14	124346X	Palnut			
15	123645X	Assembly, Frame			

NOTE: All component dimensions given in U.S. inches
1 inch = 25.4 mm

HARDWARE SHOWN LARGER FOR EASIER IDENTIFICATION

ILLUSTRATED PARTS BREAKDOWN

SEAT



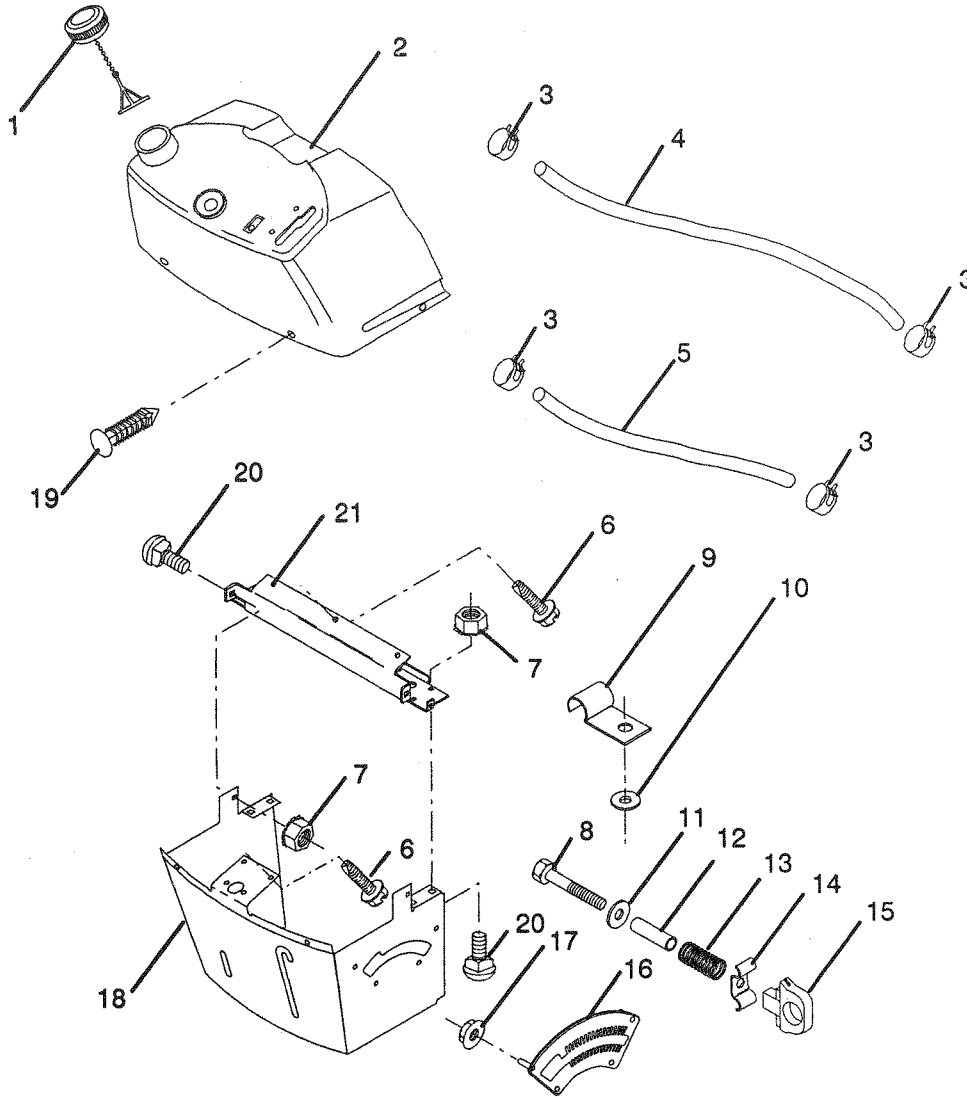
KEY NO.	PART NO.	DESCRIPTION	KEY NO.	PART NO.	DESCRIPTION
1	72170410	Bolt, Carriage 1/4-20 x 1-1/4	13	127018X	Bolt, Shoulder
2	127422X	Seat	14	74780814	Bolt, Hex 1/2 - 13 x 7/8 Gr. 5
3	74641008	Screw, Slotted Pan Head #10-32 x 1/2	15	19171912	Washer 17/32 x 1-3/16 x 12 Ga.
4	73680500	Nut, Crownlock 5/16-18	16	121251X	Strip, Foam
5	105529X	Bolt, Shoulder 5/16-18 UNC	17	123976X	Nut, Hex, Large, Flange Lock
6	4171R	Clip, Insulated	18	121248X	Bushing, Snap
7	73951000	Nut, Keps #10-32 UNF	19	121250X	Spring, Compression
8	74760612	Bolt, Fin. Hex 3/8-16 UNC x 3/4	20	121249X	Spacer, Split 28 Id. x .88 Large
9	126471X	Clip, Insulated	21	121246X	Bracket, Switch, Mounting
10	126656X	Bracket, Pivot, Seat	22	124294X	Pan, Seat
11	19131210	Washer 13/32 x 3/4 x 10 Ga.	23	10040800	Lockwasher 1/2"
12	73680600	Nut, Crownlock 3/8-16 UNC			

NOTE: All component dimensions given in U.S. inches
1 inch = 25.4 mm

HARDWARE SHOWN LARGER FOR EASIER IDENTIFICATION

ILLUSTRATED PARTS BREAKDOWN

DASH



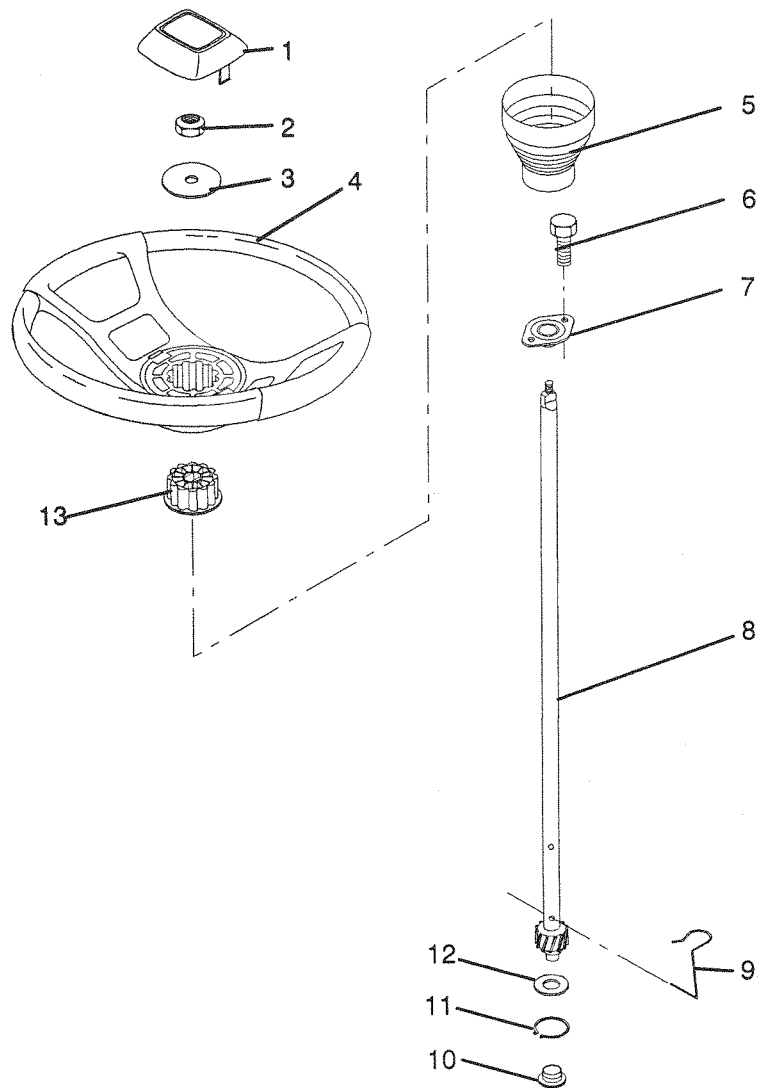
KEY NO.	PART NO.	DESCRIPTION	KEY NO.	PART NO.	DESCRIPTION
1	122015X	Cap, Fuel	13	2876H	Spring
2	123986X	Assembly, Dash & Fuel Tank	14	123493X	Clip, Height Adjustment
3	123487X	Clamp, Hose	15	126115X	Knob, Height Stop
4	8548R	Line, Fuel	16	122023X	Adjustment, Quadrant Height
5	8544R	Line, Fuel	17	124346X	Nut, Self Threading 3/16-18
6	17111312	Screw, Hex Washer Head	18	121789X	Support, Dash
7	73510400	Nut, Hex, Keps 1/4-20	19	122017X	Snap, Plastic
8	74760432	Bolt, Fin. Hex 1/4-20 x 2	20	72110404	Bolt, Carriage 1/4-20 x 1/2 Gr.5
9	2751R	Clip, Fuel line	21	122016X	Brace, Cross
10	19091216	Washer 9/32 x 3/4 x 16 Gauge			
11	19111116	Washer 11/32 x 11/16 x 16 Ga.			
12	123494X	Spacer, Split			

NOTE: All component dimensions given in U.S. inches
1 inch = 25.4 mm

HARDWARE SHOWN LARGER FOR EASIER IDENTIFICATION

ILLUSTRATED PARTS BREAKDOWN

STEERING WHEEL



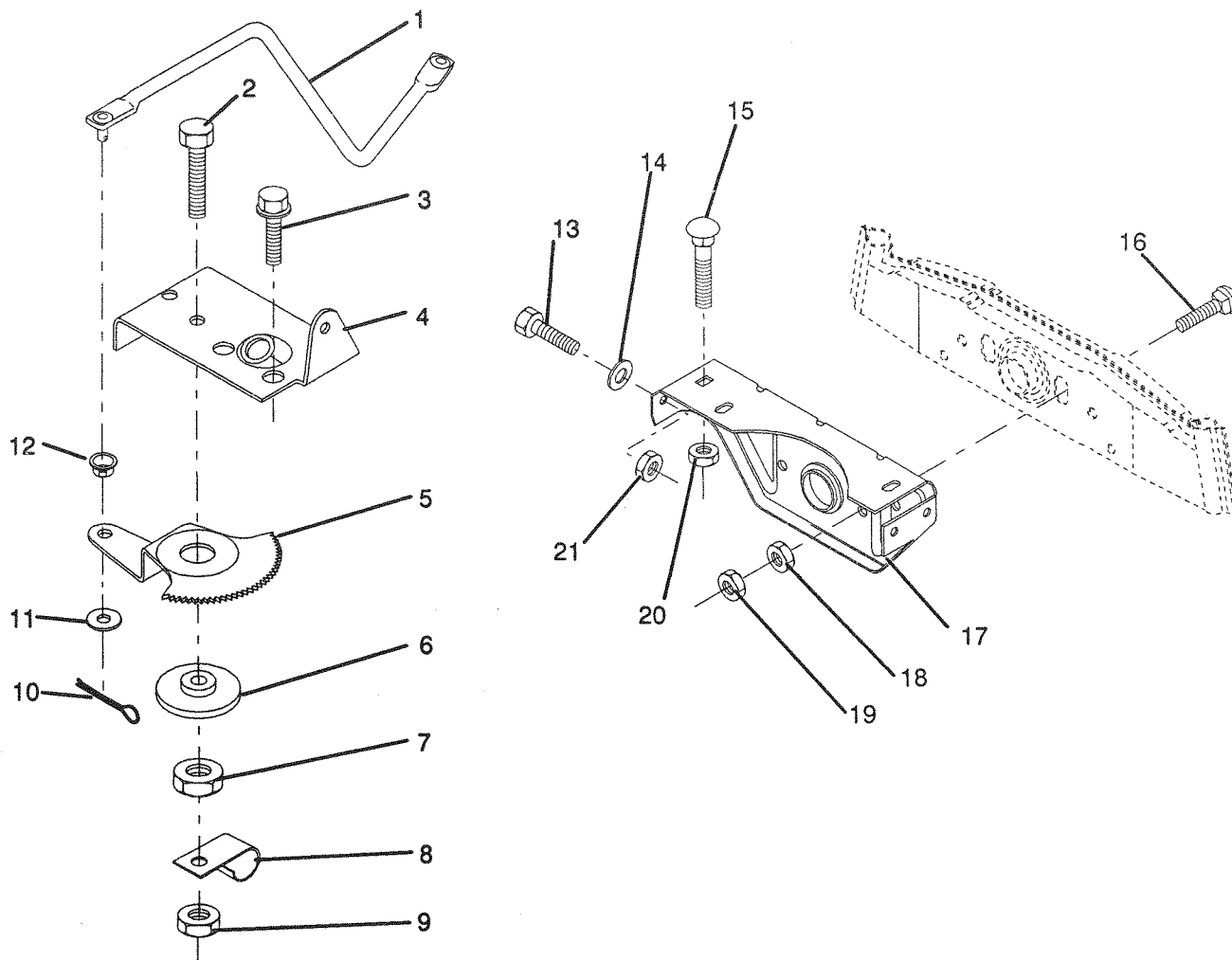
KEY NO.	PART NO.	DESCRIPTION	KEY NO.	PART NO.	DESCRIPTION
1	100710L	Insert, Steering Wheel	8	123651X	Shaft, Steering
2	7810H	Locknut 3/8-24 UNF	9	124210X	Clip, Steering
3	19133808	Washer 13/32 x 2-3/8 x 8 Gauge	10	123438X	Bushing, Lower, Steering
4	100713N	Wheel, Steering	11	12000045	Ring, Retaining
5	121897X	Sleeve, Steering	12	19211616	Washer 21/32 x 1 x 16 Gauge
6	17431008	Screw, Hex, SLFTP #10-16 x 1/2 TY-B	13	104820X	Adaptor, Wheel, Steering
7	102803X	Bushing, Steering	-	127075	Decal, Insert

NOTE: All component dimensions given in U.S. inches
1 inch = 25.4 mm

HARDWARE SHOWN LARGER FOR EASIER IDENTIFICATION

ILLUSTRATED PARTS BREAKDOWN

SECTOR GEAR / AXLE SUPPORT



KEY NO.	PART NO.	DESCRIPTION
1	124093X	Link, Drag
2	74780828	Bolt, Fin. Hex 1/2-13 x 1 3/4
3	17490508	Screw, Hex ,Thd. Roll. 5/16-18 x 1/2
4	121925X	Plate, Steering Support
5	121926X	Gear, Sector
6	121927X	Bushing
7	73030800	Nut, Heavy, Hex, Top Lock 1/2-13 UNC
8	126472X	Clip, Insulated
9	73680800	Nut, Crownlock 3/8-16
10	76020412	Pin, Cotter 1/8 x 3/4
11	19131316	Washer 13/32 x 13/16 x 16 Ga.

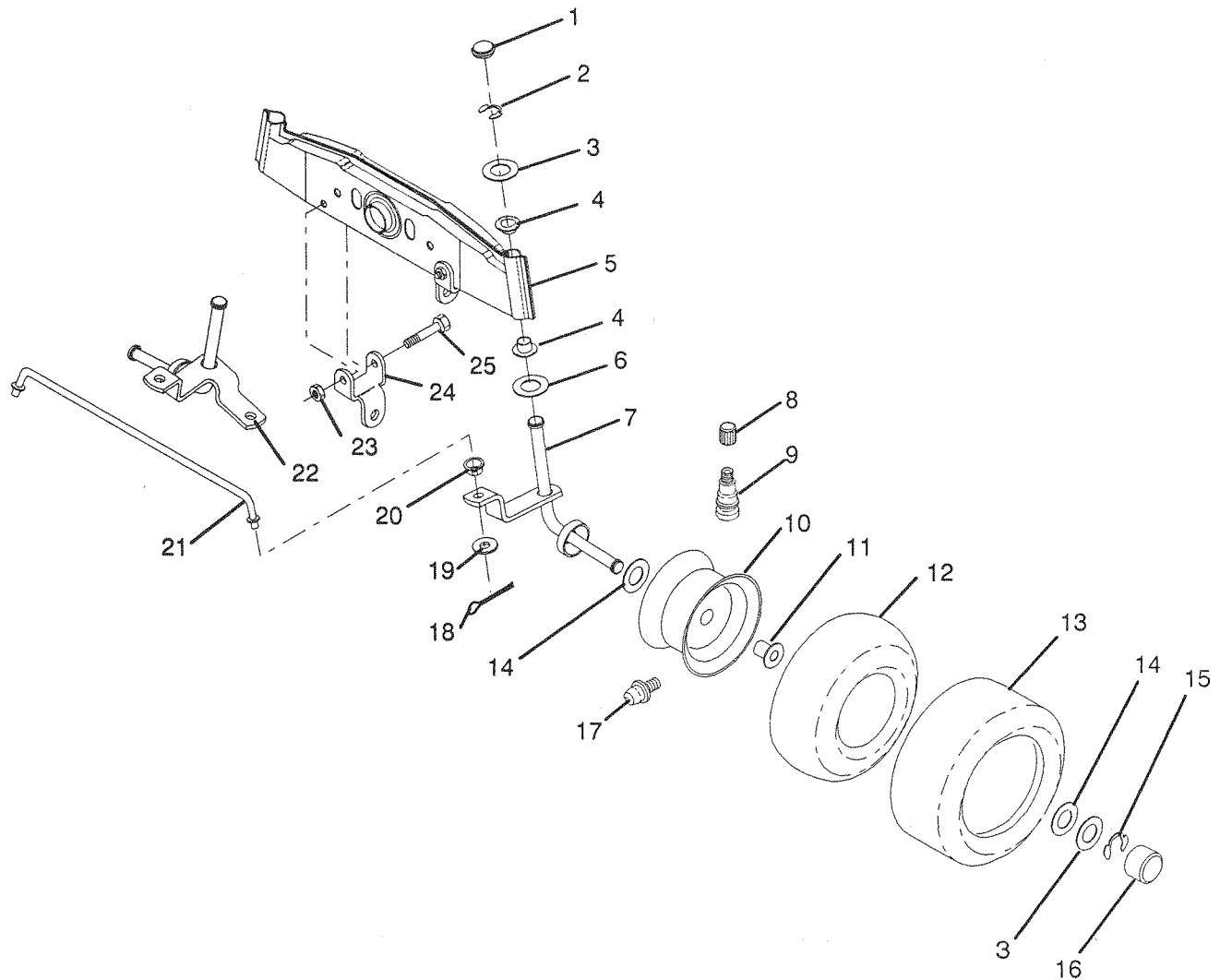
KEY NO.	PART NO.	DESCRIPTION
12	126847X	Bushing
13	74760512	Bolt, Hex Hd. 5/16-18 UNC x 3/4
14	19111416	Washer 11/32 x 7/8 x 16 Gauge
15	72110606	Bolt, Carriage 3/8-16 UNC x 3/4
16	72140622	Bolt, Carriage
17	121912X	Support, Front Axle
18	73220600	Nut, Fin. Hex 3/8-16 UNC
19	73930600	Nut, Centerlock 3/8-16 UNC
20	73680600	Nut, Crownlock 3/8-16 UNC
21	73680500	Nut, Crownlock 5/16-18

NOTE: All component dimensions given in U.S. inches
1 inch = 25.4 mm

HARDWARE SHOWN LARGER FOR EASIER IDENTIFICATION

ILLUSTRATED PARTS BREAKDOWN

FRONT AXLE



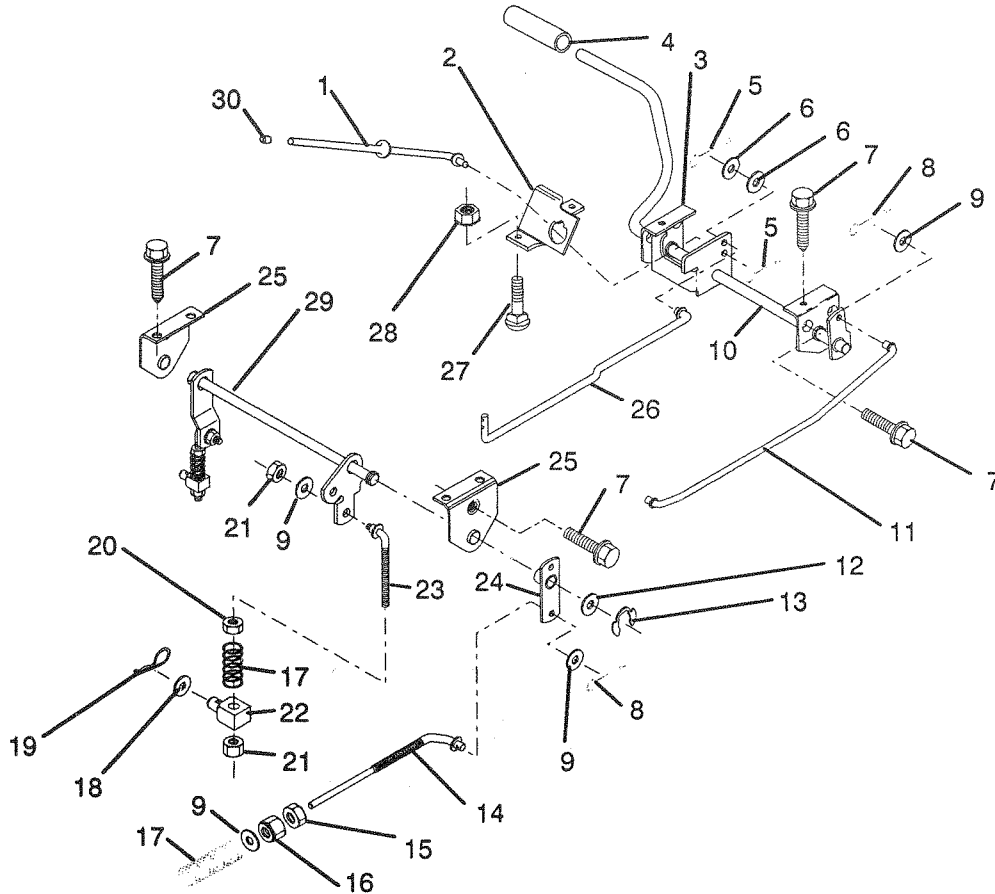
KEY NO.	PART NO.	DESCRIPTION	KEY NO.	PART NO.	DESCRIPTION
1	121232X	Cap, Spindle	16	104757X	Cap, Hub
2	12000029	Ring, Clip	17	278H	Fitting, Grease
3	121748X	Washer 25/32 x 1-5/8 x 16 Ga.	18	76020412	Pin, Cotter 1/8 x 3/4
4	121922X	Nyliner	19	19131316	Washer 13/32 x 13/16 x 16 Ga.
5	121914X	Axle, Front	20	126847X	Bushing
6	6266H	Bearing, Thrust	21	121924X	Rod, Tie
7	121919X	Spindle, R.H. Assembly	22	121916X	Spindle, Assembly, L.H.
8	59192	Cap, Valve	23	73680500	Nut, Crownlock 5/16-18
9	65139	Stem, Valve	24	121915X	Bracket, Front Stabilizer Link
10	122394X311	Rim	25	74760540	Bolt, Hex, Fin. 5/16-18 UNC x 2-1/2
11	9040H	Bearing, Flange			
12	59904	Tube			
13	124142X	Tire, Front			
14	121749X	Washer 25/32 x 1-1/4 x 16 Ga.			
15	12000029	Ring, Clip			

NOTE: All component dimensions given in U.S. inches
1 inch = 25.4 mm

HARDWARE SHOWN LARGER FOR EASIER IDENTIFICATION

ILLUSTRATED PARTS BREAKDOWN

BRAKE / REAR MOWER LIFT ASSEMBLY



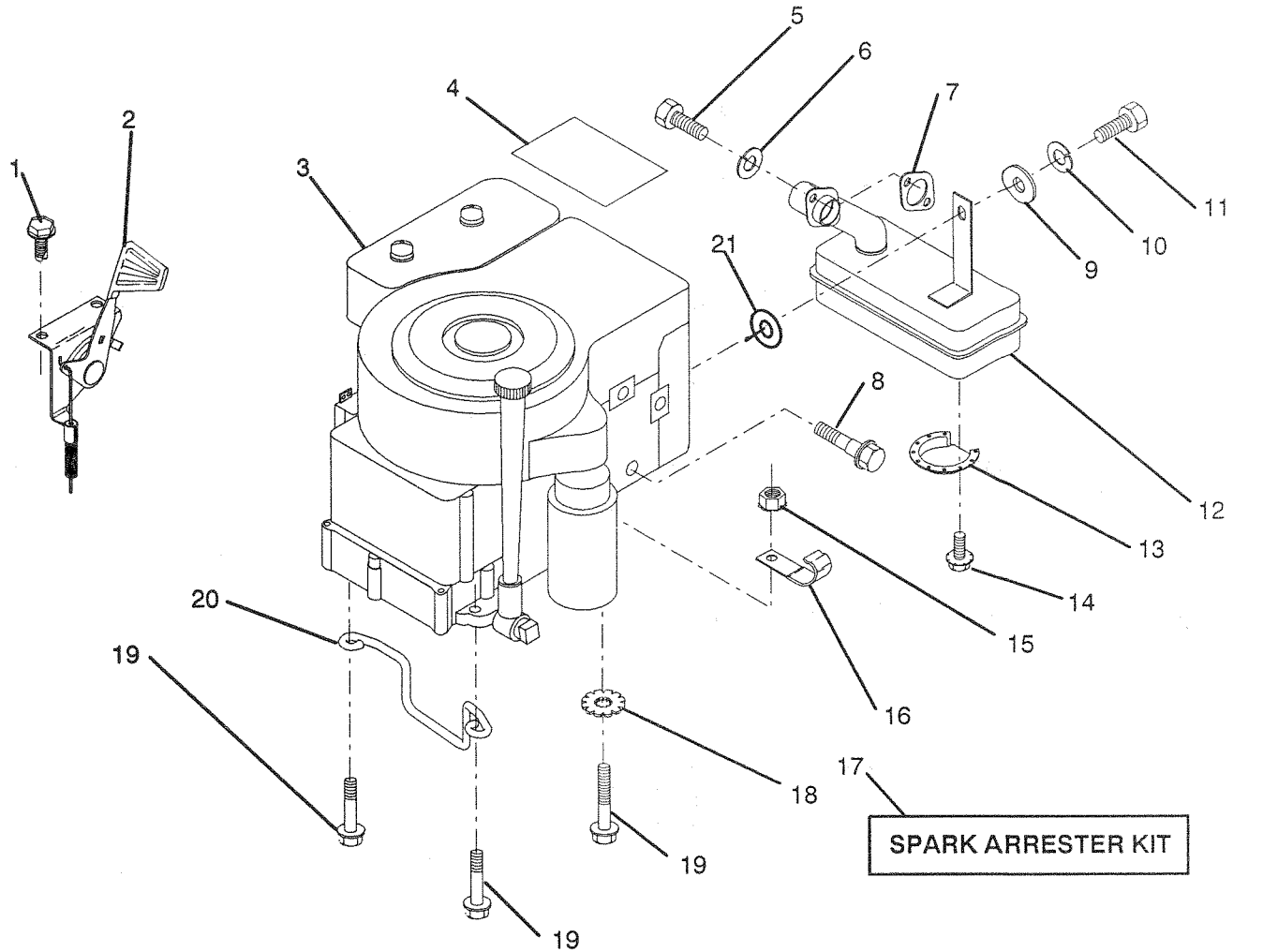
KEY NO.	PART NO.	DESCRIPTION	KEY NO.	PART NO.	DESCRIPTION
1	123436X	Rod, Parking Brake	17	106888X	Spring, Brake Rod
2	123437X	Bracket, Parking Brake	18	19132012	Washer 13/32 x 1-1/4 x 12 Ga.
3	122504X	Bracket, Clutch Pedal, L.H.	19	4921H	Spring, Retainer
4	8883R	Cover, Pedal	20	73930600	Nut, Centerlock 3/8-16 UNC
5	76020312	Pin, Cotter	21	73680600	Nut, Crownlock 3/8-16 UNC
6	19131016	Washer 13/32 x 5/8 x 16 Gauge	22	106204X	Trunnion, Lift
7	17490508	Screw, Hex, Thd. Roll. 5/16-18 x 1/2	23	123672X	Link, Threaded
8	76020412	Pin, Cotter	24	123641X	Assembly, Brake Pivot Arm
9	19131316	Washer 13/32 x 13/16 x 16 Ga.	25	121978X	Bracket, Lift Shaft
10	124145X	Assembly, Clutch/Brake Pedal	26	123394X	Rod, Clutch
11	123543X	Rod, Front Brake	27	72110506	Bolt, Carriage 5/16-18 UNC x 3/4
12	19251816	Washer 25/32 x 1-1/8 x 16 Ga.	28	73510500	Nut, Keps 5/16-18 UNC
13	12000034	Ring, Clip	29	123547X	Assembly, Rear Mower Lift
14	126759X	Rod, Rear Brake	30	71673	Cap, Plunger
15	73350600	Nut, Hex Jam 3/8-16 UNC			
16	73800600	Locknut, Hex with Washer Insert 3/8-16 UNC			

NOTE: All component dimensions given in U.S. inches
1 inch = 25.4 mm

HARDWARE SHOWN LARGER FOR EASIER IDENTIFICATION

ILLUSTRATED PARTS BREAKDOWN

ENGINE / THROTTLE



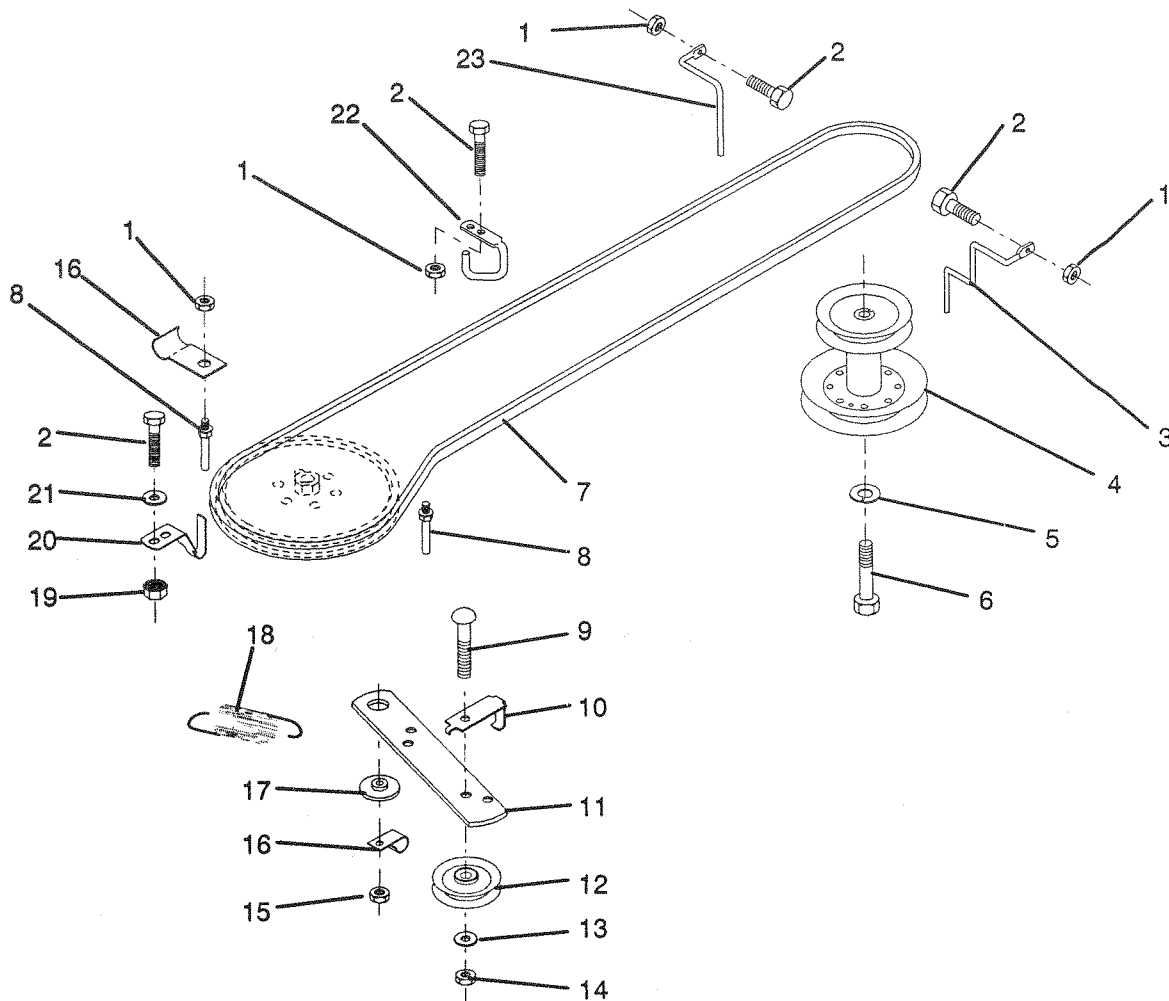
KEY NO.	PART NO.	DESCRIPTION	KEY NO.	PART NO.	DESCRIPTION
1	17720408	Screw, Hex Thd. Cut 1/4-20 x 1/2	12	123676X	Muffler
2	125985X	Control, Throttle	13	101326L	Deflector, Muffler
3	121797X	Engine, Briggs and Stratton, Model Number 255707, Type Number 0122-01	14	17030808	Screw, Spiderlock Hex Head #8 x 1/2 ABTPS
4	108761X	Decal, Engine	15	73510600	Nut, Keps 3/8-16
5	71070512	Screw, Hex Hd. Cap 5/16-18 x 3/4	16	2751R	Clip, Fuel Line
6	10040500	Washer, Lock, Heavy Helical Spring 5/16	17	121851X	Arrestor, Spark (optional equipment)
7	125593X	Gasket, Exhaust	18	11050600	Lockwasher, External Tooth 3/8
8	121094X	Bolt, Shoulder 5/16	19	17490624	Screw, Hex Washer Head, Thd. Roll. 3/8-16 x 1 1/21
9	19101216	Washer 5/16 x 3/4 x 16 Gauge	20	126636X	Keeper, Ground Drive Belt
10	10040400	Washer, Lock, Heavy Helical Spring 1/4	21	102933X	Spacer
11	74780412	Bolt, Hex Fin. 1/4-20 UNC x 3/4			

NOTE: All component dimensions given in U.S. inches
1 inch = 25.4 mm

HARDWARE SHOWN LARGER FOR EASIER IDENTIFICATION

ILLUSTRATED PARTS BREAKDOWN

GROUND DRIVE



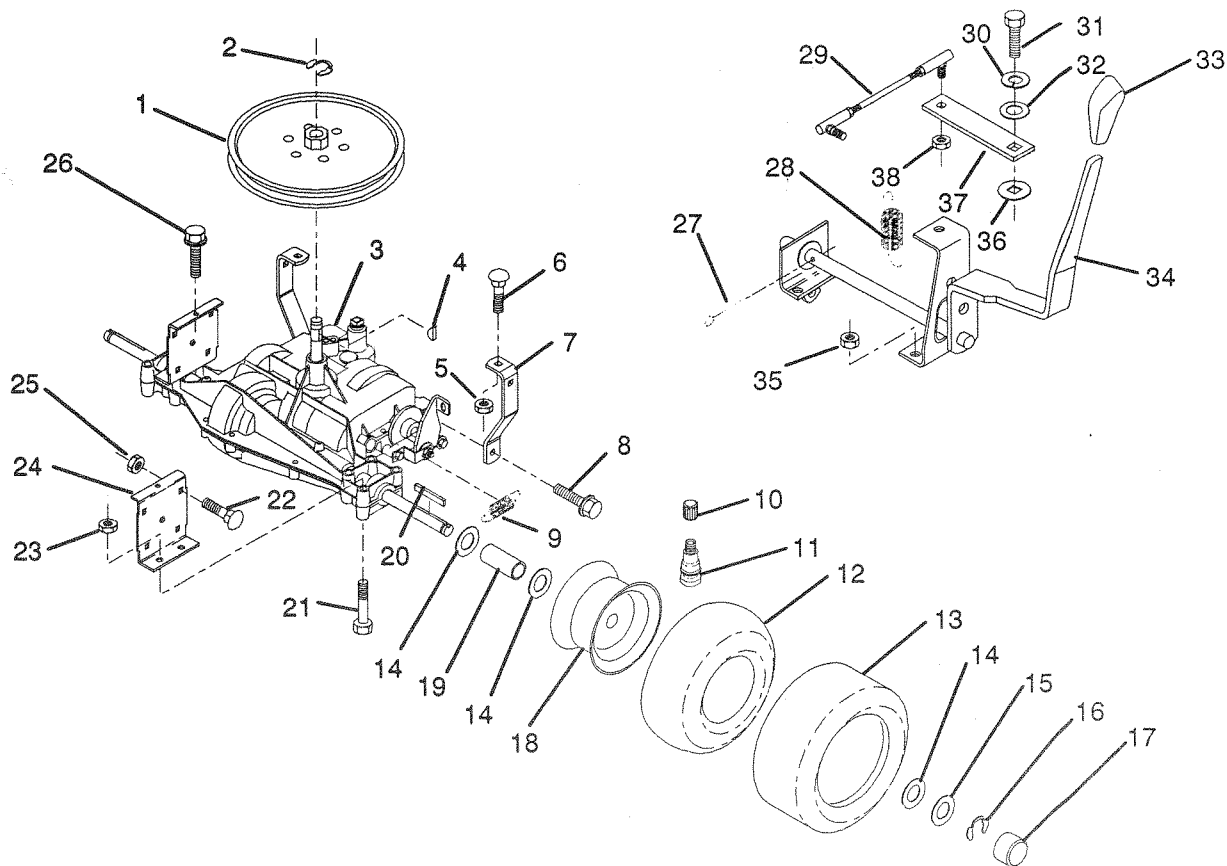
KEY NO.	PART NO.	DESCRIPTION	KEY NO.	PART NO.	DESCRIPTION
1	73680500	Nut, Crownlock 5/16-18	13	19131316	Washer 13/32 x 13/16 x 16 Ga.
2	74760512	Bolt, Hex Hd. 5/16-18 UNC x 3/4	14	73930600	Nut, Centerlock 3/8-16 UNC
3	123448X	Keeper, Mower Drive Belt, Engine, R.H.	15	73680600	Nut, Crownlock 3/8-16 UNC
4	123400X	Pulley, Engine	16	126471X	Clip, Insulated
5	10040700	Washer, Lock, Heavy Helical Spring 7/16	17	122052X	Spacer, Retainer
6	71130720	Bolt, Fin. Hex 7/16-20 UNF x 1-1/4 Grade 8	18	123397X	Spring, Extension
7	124525X	Traction, V-Belt Drive	19	73510500	Nut, Keps 5/16-18 UNC
8	123405X	Keeper, T/A Ground Drive Belt	20	123891X	Keeper, T/A Ground Drive Belt
9	72140612	Bolt, Rdhd. 3/8-16 UNC x 1-1/2	21	19111016	Washer 11/32 x 5/8 x 16 Gauge
10	123396X	Keeper, Ground Drive Belt, Idler	22	123404X	Keeper, Frame Ground Drive Belt
11	123395X	Arm, Ground Drive Clutch	23	123402X	Keeper, Engine Mower Drive Belt, L.H.
12	4859J	Idler, Flat			

NOTE: All component dimensions given in U.S. inches
1 inch = 25.4 mm

HARDWARE SHOWN LARGER FOR EASIER IDENTIFICATION

ILLUSTRATED PARTS BREAKDOWN

TRANSAXLE



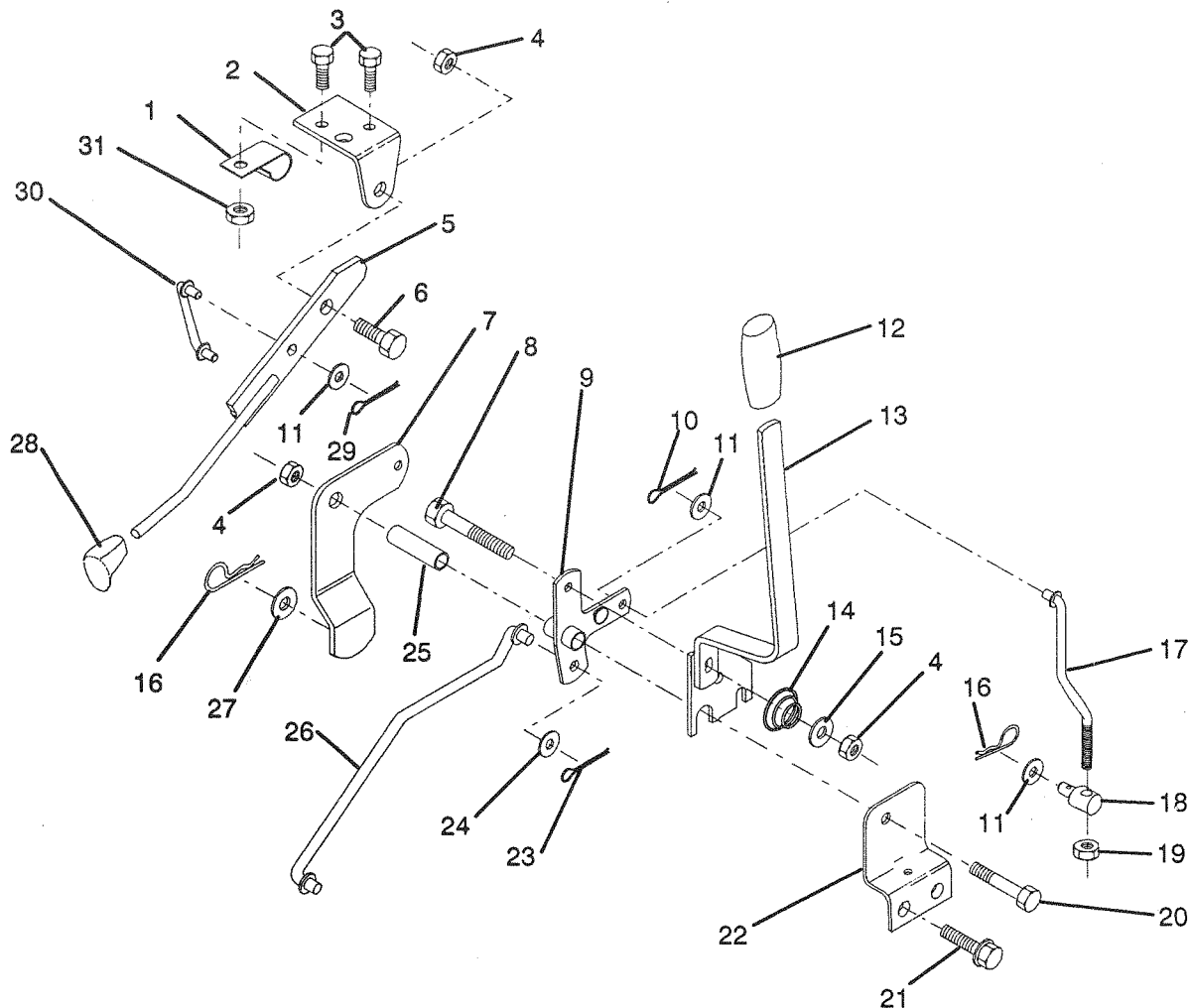
KEY NO.	PART NO.	DESCRIPTION	KEY NO.	PART NO.	DESCRIPTION
1	123385X	Pulley	22	72140506	Bolt, Carriage 5/16-18 UNC x 3/4
2	1200028	Ring, Retainer	23	73680600	Nut, Crownlock 3/8-16
3	123655X	Transaxle, Foote, 6 Speed, Model Number 4360-18	24	123377X	Bracket, Transaxle
4	2228M	Key, Woodruff #9	25	73680500	Nut, Crownlock 5/16-18
5	73680500	Nut, Crownlock 5/16-18	26	17490512	Screw 5/16-18 x 3/4
6	72140506	Bolt, Carriage 5/16-18 UNC x 3/4	27	76020416	Pin, Cotter 1/8 X 1
7	123378X	Strap, Torque	28	123393X	Spring, Extension
8	17490508	Screw, Hex, Threaded, Roll. 5/16-18 x 1/2	29	123632X	Link, Shift
9	110422X	Spring, Brake	30	10040400	Washer, Lock, Heavy Helical Spring 1/4
10	59192	Cap, Valve	31	71040412	Bolt, Fin, Hex 1/4-28 UNF x 3/4 Grade 8
11	65139	Stem, Valve	32	19091210	Washer 9/32 x 3/4 x 10 Ga.
12	8134H	Tube	33	106933X	Knob, Shift Control
13	123411X	Tire, Rear	34	125976X	Assembly, Shift Handle
14	121749X	Washer 25/32 x 1-1/4 x 16 Ga.	35	73510500	Nut, Keps 5/16-18
15	121748X	Washer 25/32 x 1-5/8 x 16 Ga.	36	105701X	Washer, Shift Plate
16	1200001	E-Ring	37	123539X	Arm, Shift
17	104757X	Hub, Cap	38	73810500	Nut, Hex, Nylon 5/16-24
18	123412X311	Rim			
19	123409X	Spacer			
20	123583X	Key, Square			
21	74760644	Bolt, Fin, Hex 3/8-16 x 2-3/4			

NOTE: All component dimensions given in U.S. inches
1 inch = 25.4 mm

HARDWARE SHOWN LARGER FOR EASIER IDENTIFICATION

ILLUSTRATED PARTS BREAKDOWN

MOWER LIFT LEVER



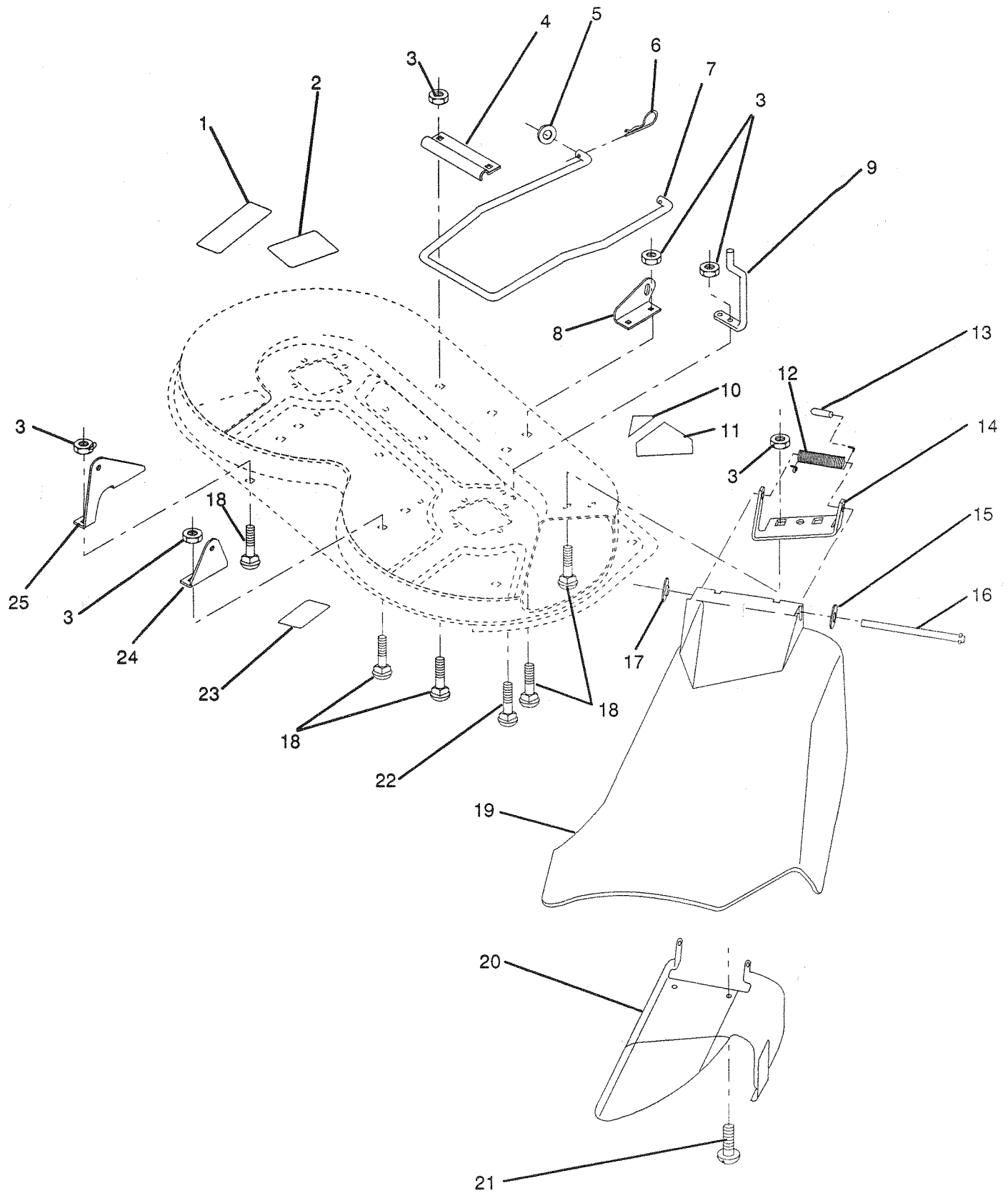
KEY NO.	PART NO.	DESCRIPTION	KEY NO.	PART NO.	DESCRIPTION
1	126470X	Clip, Insulated	19	73350600	Nut, Hex, Jam 3/8 x16 UNC
2	122018X	Bracket, Mower Clutch	20	74760644	Bolt, Fin. Hex 3/8-16 UNC x 2-3/4
3	74780408	Bolt, Fin. Hex 1/4-20 UNC x 1/2 Grade 5	21	17490508	Screw, Hex, Threaded, Roll. 5/16-18 x 1/2
4	73680600	Nut, Crownlock 3/8-16 UNC	22	121929X	Bracket, Mower Height
5	123417X	Assembly, Clutch Lever	23	76020416	Pin, Cotter 1/8 x 1
6	106451X	Bolt, Shoulder	24	19171616	Washer 17/32 x 1 x 16 Gauge
7	123491X	Assembly, Mower Clutch Arm	25	121933X	Tube, Spacer
8	74760636	Bolt, Hex 3/8-16 UNC x 2-1/4	26	121934X	Rod, Mower Lift
9	121930X	Assembly, Bellcrank Lift	27	19131316	Washer 13/32 x 13/32 x 16 Ga.
10	76020412	Pin, Cotter 1/8 x 3/4	28	121466X	Knob
11	19131316	Washer 13/32 x 13/16 x 16 Ga.	29	76020312	Pin, Cotter 3/32 x 3/4
12	122027X	Grip, Handle	30	123671X	Link, Mower Clutch
13	127028	Assembly, Lift Handle	31	73680400	Nut, Crownlock 1/4-20
14	123496X	Spring, Compression			
15	19131212	Washer 13/32 x 3/4 x 12 Gauge			
16	4921H	Retainer, Spring			
17	123654X	Link, Front Lift			
18	7078J	Trunnion, Threaded 3/8-16			

NOTE: All component dimensions given in U.S. inches
1 inch = 25.4 mm

HARDWARE SHOWN LARGER FOR EASIER IDENTIFICATION

ILLUSTRATED PARTS BREAKDOWN

MOWER DECK



ILLUSTRATED PARTS BREAKDOWN

MOWER DECK

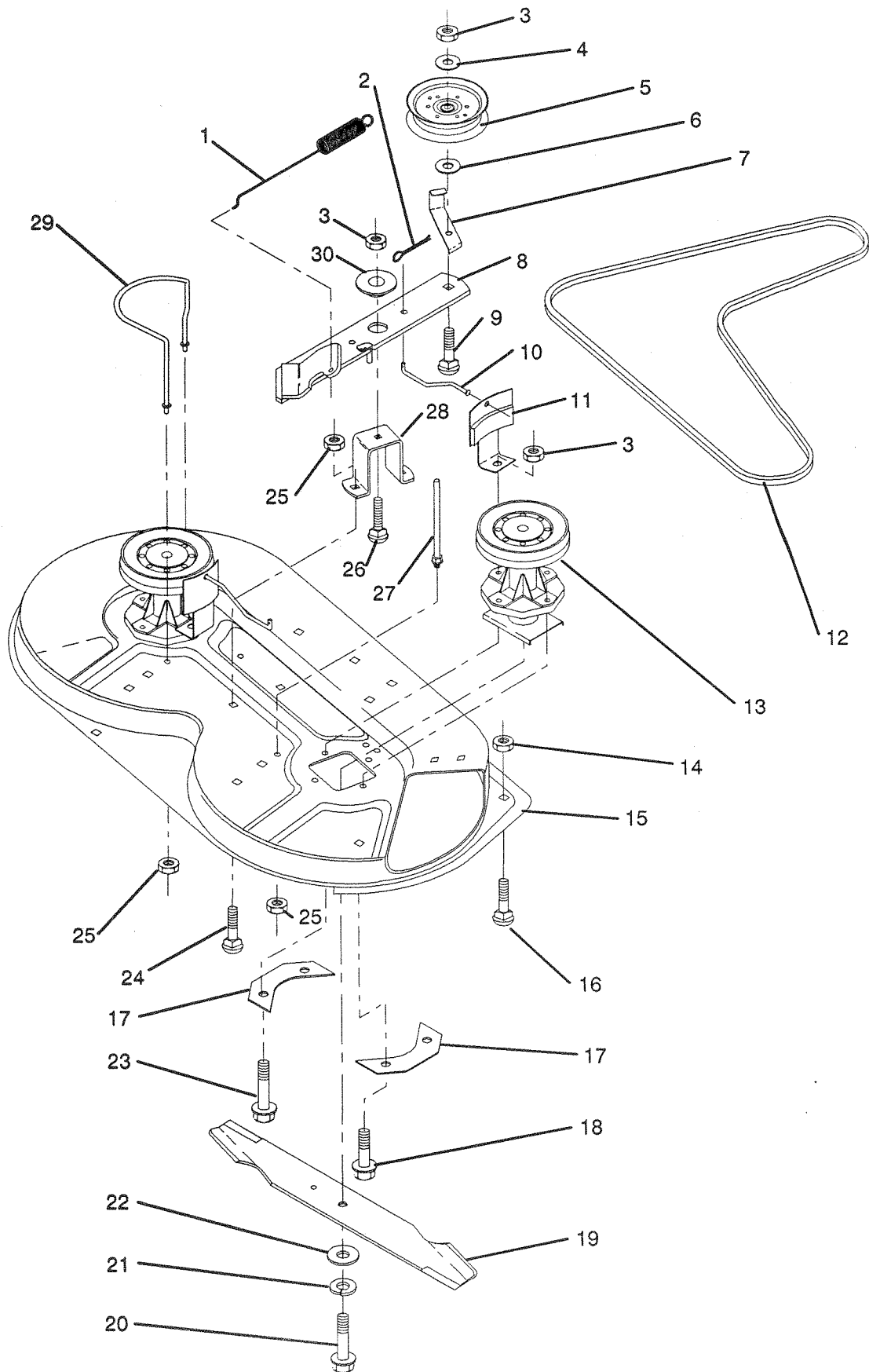
KEY NO.	PART NO.	DESCRIPTION	KEY NO.	PART NO.	DESCRIPTION
1	109820X	Decal, Caution	15	19111016	Washer 11/32 x 5/8 x 16 Gauge
2	105814X	Decal, V-Belt Mower Drive	16	121980X	Rod, Hinge
3	73680500	Nut Crownlock 5/16-18	17	110452X	Pushnut
4	122047X	Bracket, Stabilizer Link	18	72140505	Bolt, Carriage 5/16-18 UNC x 5/8
5	19171713	Washer 17/32 x 1-1/16 x 13 Ga.	19	126370X	Guard, Discharge
6	3146R	Retainer, Spring	20	125629X	Assembly, Deflector Support
7	124636X	Stabilizer, Mower Link	21	17051007	Screw, Pan Head PLT-30
8	122045X	Bracket, Front Lift, R.H.	22	74760512	Bolt, Hex Head 5/16-18 UNC x 3/4
9	123661X	Guide, Front Mandrel, R.H. Mower Belt	23	123649X	Decal, Warning
10	109984X	Decal, Safety Standard (not serviced)	24	122043X	Bracket, Rear Lift, R.H.
11	123658X	Decal, Warning	25	122044X	Bracket, Rear Lift, L.H.
12	123713X	Spring, Torsion			
13	105304X	Cap, Sleeve			
14	126361X	Bracket, Deflector			

NOTE: All component dimensions given in U.S. inches
1 inch = 25.4 mm

HARDWARE SHOWN LARGER FOR EASIER IDENTIFICATION

ILLUSTRATED PARTS BREAKDOWN

MOWER DECK



ILLUSTRATED PARTS BREAKDOWN

MOWER DECK

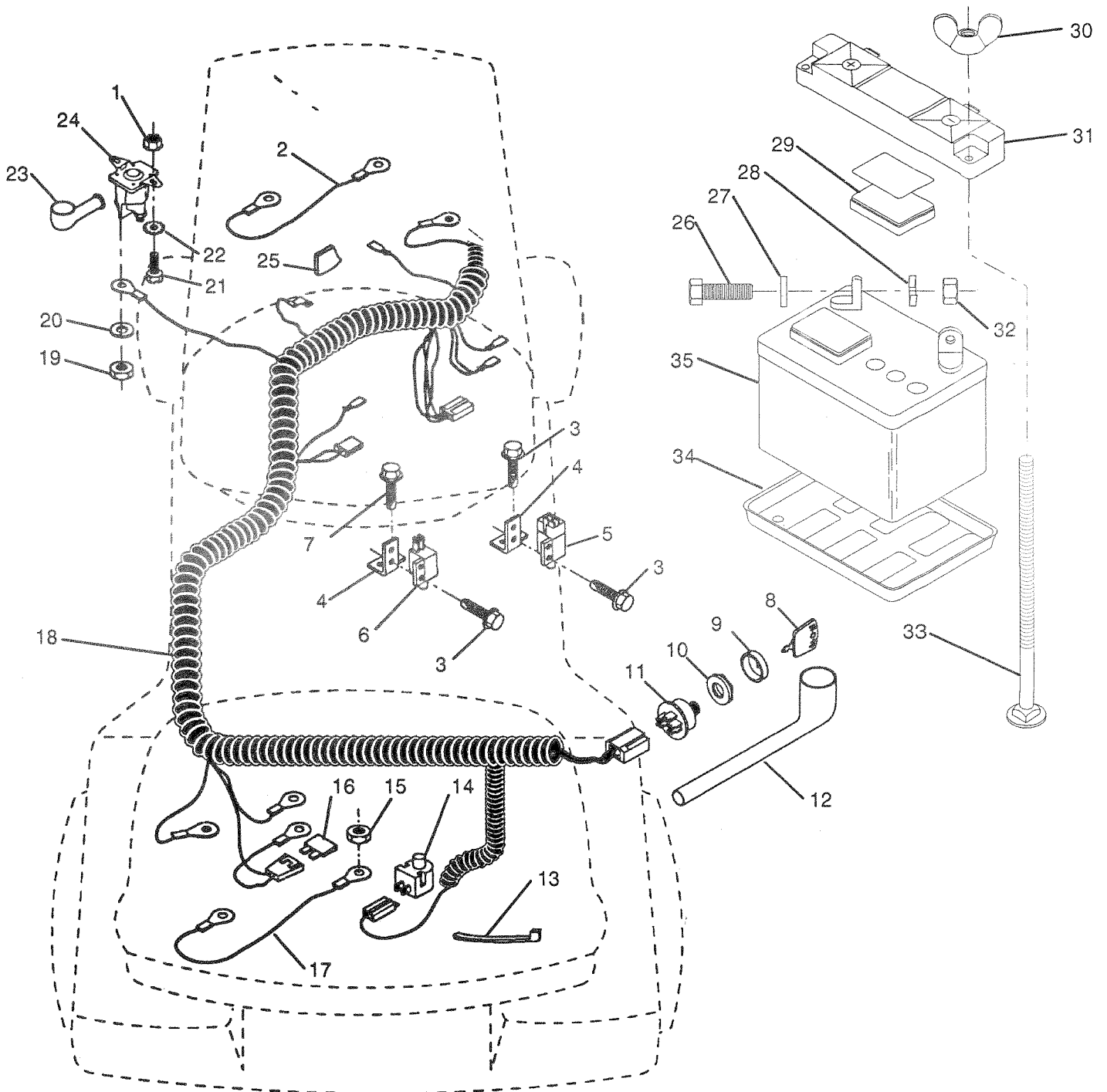
KEY NO.	PART NO.	DESCRIPTION	KEY NO.	PART NO.	DESCRIPTION
1	122028X	Spring, Mower Clutch	19	122260X	Blade, Low Lift
2	76020312	Pin, Cotter 3/32 x 3/4	20	74610624	Bolt, Fin. Hex 3/8-24 UNF x 1-1/2 Grade 5
3	73680600	Nut, Crownlock 3/8-16 UNC	21	10030600	Washer, Lock, Hvy. 3/8
4	19131412	Washer 13/32 x 7/8 x 12 Gauge	22	19132012	Washer 13/32 x 1-1/4 x 12 Ga.
5	121316X	Idler, Flat	23	17490620	Screw, Hex, Threaded, Roll. 3/8-16 x 1-1/4
6	19132203	Washer 13/32 x 1-3/8 3 Gauge	24	72140505	Bolt, Carriage 5/16-18 UNC x 5/8
7	126756X	Guide, Belt	25	73680500	Nut, Crownlock 5/16-18
8	123702X	Assembly, Mower Idler Arm	26	72110608	Bolt, Carriage 3/8-16 UNC x 1 Grade 5
9	72110618	Bolt, Carriage 3/8-16 x 2-1/4	27	123439X	Guide, Rear Belt, R.H.
10	122049X	Rod, Brake	28	122051X	Support, Idler Arm
11	106578X	Assembly, Brake	29	123673X	Guide, Belt, L.H.
12	124293X	V-Belt	30	122052X	Spacer, Retainer
13	124208X	Assembly, Mandrel			
14	73680400	Nut, Crownlock 1/4-20			
15	126410X	Housing, Mower			
16	72140404	Bolt, Carriage 1/4-20 x 1/2			
17	100668L	Support, Plate Jackshaft			
18	17490614	Screw, Hex, Threaded, Roll. 3/8-16 x 7/8			

NOTE: All component dimensions given in U.S. inches
1 inch = 25.4 mm

HARDWARE SHOWN LARGER FOR EASIER IDENTIFICATION

ILLUSTRATED PARTS BREAKDOWN

ELECTRICAL



ILLUSTRATED PARTS BREAKDOWN

ELECTRICAL

KEY NO.	PART NO.	DESCRIPTION	KEY NO.	PART NO.	DESCRIPTION
1	73510400	Nut, Hex, Keps 1/4-20	25	125760X	Stop, Choke
2	105002X	Assembly, Cable	26	74760412	Bolt, Hex Head 1/4-20 UNC x 3/4
3	17021008	Screw, Hex Head, Tapping, #10-24 x 1/2	27	19091016	Washer 9/32 x 5/8 x 16 Gauge
4	108236X	Bracket, Switch	28	10040400	Washer, Lock, Heavy Helical Spring 1/4
5	109553X	Switch, Interlock	29	121264X	Battery, Cap
6	104445X	Switch, Interlock	30	123198X	Wing Nut, Locking, Plastic 1/4-20
7	17211008	Screw, Hex Washer Head, Tap. #10-16 x 1/2	31	102476X	Guard, Terminal
8	122147X	Key, Molded	32	73220400	Nut, Fin. Hex 1/4-20 UNC
9	123620X	Cover, Key Ignition	33	72240460	Bolt, Carriage 1/4-20 UNC x 7-1/2
10	124211X	Nut, Ignition	34	7603J	Tray, Battery
11	4406R	Switch, Ignition	35	121265X	Battery
12	124083X	Cover, Ignition Switch	-	127661X	Manual, Operator's (English)
13	7192J	Tie, Cable	-	127662X	Manual, Operator's (French)
14	121305X	Switch, Plunger	-	MS-9811	Manual, Operating and Maintenance, Briggs and Stratton
15	73510500	Nut, Hex, Keps 5/16-18	-	127612X	Manual, Parts (English & French)
16	108824X	Fuse	-	101539X	Sheet, Instruction, Tractor, 15° Slope (English)
17	596J	Assembly, Cable	-	101572X	Sheet, Instruction, Tractor, 15° Slope (French)
18	123703X	Harness, Ignition			
19	73350400	Nut, Hex, Jam 1/4-20			
20	10090400	Washer, Lock 1/4			
21	74780408	Bolt, Fin. Hex 1/4-20 UNC x 1/2 Grade 5			
22	11050400	Washer, Lock, External Tooth 1/4			
23	719J	Cover, Terminal			
24	109081X	Solenoid			

NOTE: All component dimensions given in U.S. inches
1 inch = 25.4 mm

HARDWARE SHOWN LARGER FOR EASIER IDENTIFICATION