

REPAIR PARTS MANUAL
MODEL NO. 961440005
MFG. ID. NO. 96144000501
Rotary Lawn Mower





LIMITED WARRANTY

The Manufacturer warrants to the original consumer purchaser that this product as manufactured is free from defects in materials and workmanship. For a period of two (2) years from date of purchase by the original consumer purchaser, we will repair or replace, at our option, without charge for parts or labor incurred in replacing parts, any part which we find to be defective due to materials or workmanship. This Warranty is subject to the following limitations and exclusions.

1. This warranty does not apply to the engine, transaxle/transmission components, battery (except as noted below) or components parts thereof. Please refer to the applicable manufacturer's warranty on these items.
2. Transportation charges for the movement of any power equipment unit or attachment are the responsibility of the purchaser. Transportation charges for any parts submitted for replacement under this warranty must be paid by the purchaser unless such return is requested by the manufacturer.
3. Battery Warranty: On products equipped with a Battery, we will replace, without charge to you, any battery which we find to be defective in manufacture, during the first ninety (90) days of ownership. After ninety (90) days, we will exchange the Battery, charging you 1/12 of the price of a new Battery for each full month from the date of the original sale. Battery must be maintained in accordance with the instructions furnished.
4. The Warranty period for any products used for rental or commercial purposes is limited to 45 days from the date of original purchase.
5. This Warranty applies only to products which have been properly assembled, adjusted, operated, and maintained in accordance with the instructions furnished. This Warranty does not apply to any product which has been subjected to alteration, misuse, abuse, improper assembly or installation, delivery damage, or to normal wear of the product.
6. Exclusions: Excluded from this Warranty are belts, blades, blade adapters, normal wear, normal adjustments, standard hardware and normal maintenance.
7. In the event you have a claim under this Warranty, you must return the product to an authorized service dealer.

Should you have any unanswered questions concerning this Warranty, contact:

HOP
Customer Service Department
9335 Harris Corners Parkway
Charlotte, NC 28269 USA

In Canada contact:
HOP
Customer Service Department
5855 Terry Fox Way
Mississauga, Ontario L5V 3E4

giving the model number, serial number and date of purchase of your product and the name and address of the authorized dealer from whom it was purchased.

THIS WARRANTY DOES NOT APPLY TO INCIDENTAL OR CONSEQUENTIAL DAMAGES AND ANY IMPLIED WARRANTIES ARE LIMITED TO THE SAME TIME PERIODS STATED HEREIN FOR OUR EXPRESSED WARRANTIES.

Some areas do not allow the limitation of consequential damages or limitations of how long an implied Warranty may last, so the above limitations or exclusions may not apply to you. This Warranty gives you specific legal rights, and you may have other rights which vary from locale to locale.

This is a limited Warranty within the meaning of that term as defined in the Magnuson-Moss Act of 1975.

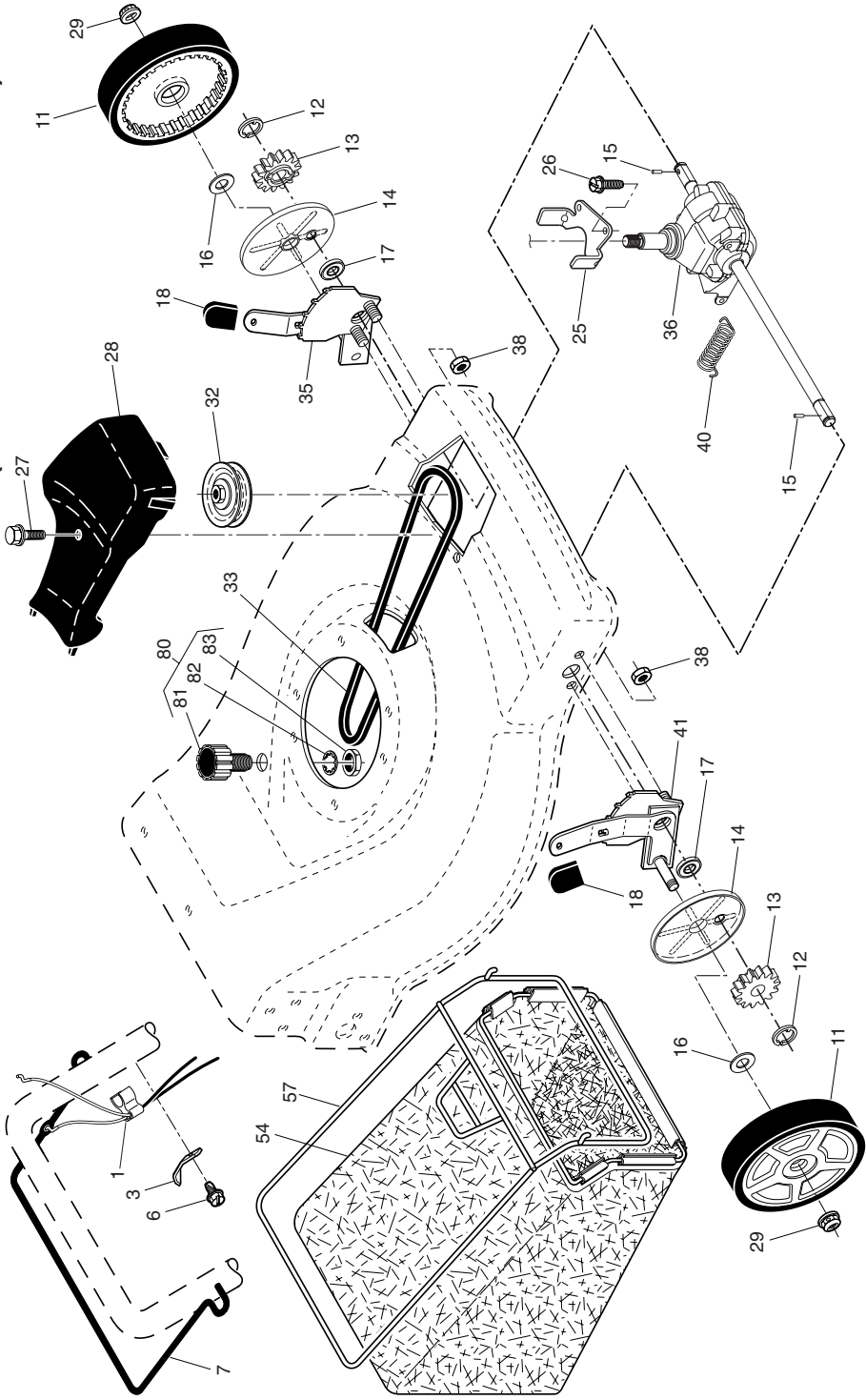
ROTARY LAWN MOWER - - MODEL NUMBER 961440005 (MFG. ID. NO. 96144000501)

| KEY NO. | PART NO. | DESCRIPTION | KEY NO. | PART NO. | DESCRIPTION | KEY NO. | PART NO. | DESCRIPTION |
|---------|--------------|--|---------|--------------|---|---------|--------------|--|
| 1 | 532 42 65-32 | Upper Handle Assembly (Includes Foam Grip) | 28 | 532 17 47-19 | Bolt, Shoulder 3/8-16 x 1 | 50 | 532 85 10-84 | Screw, Machine, Hex Head 3/8-24 x 1-3/8 Grade 8 |
| 2 | 532 42 40-33 | Cable, Operator Presence | 29 | 532 40 16-30 | Washer, Curved, Cylindrical | 51 | 532 17 00-31 | Kit, Front Baffle (Includes Key Number 53) |
| 3 | 532 43 00-34 | Bracket, Upstop | 30 | 532 40 65-82 | Axle Arm Assembly | 52 | 532 40 47-63 | Danger Decal |
| 4 | 532 16 66-49 | Mulcher Plug | 31 | 532 70 10-37 | Selector Knob | 53 | 817 60 04-06 | Screw, Serrated, TT 1/4-20 |
| 6 | 532 18 23-98 | Handle Knob | 32 | 532 40 98-89 | Selector Spring | 54 | 532 08 83-48 | Washer, Flat |
| 7 | 532 75 06-34 | Screw | 33 | 532 19 60-53 | Mulcher Door | 55 | 873 93 06-00 | Nut, Hex 3/8-16 |
| 8 | 532 42 65-92 | Control Bar | 34 | 532 40 16-29 | Spacer | 56 | 532 08 86-52 | Hinge Screw 1/4-20 x 1-1/4 |
| 9 | 532 40 84-92 | Rear Door Assembly | 35 | 532 41 06-26 | Wheel Adjusting Bracket | 57 | 532 05 17-93 | Hairpin Cotter |
| 10 | 532 12 84-15 | Pop Rivet | 36 | 532 17 57-35 | Hinge Bracket Assembly | 58 | 532 15 50-44 | Lower Handle |
| 11 | 532 15 00-50 | Screw, Self-Tapping #10-24 x 5/8 | 37 | 532 42 88-67 | Screw, Sems, Thread Cutting 5/16-18 x 3/4 | 59 | 532 19 15-74 | Handle Bolt |
| 12 | 817 06 04-10 | Screw, Hex Hex Head, #10-24 x 5/8 | 38 | 532 40 30-73 | Discharge Deflector | 60 | 874 76 06-12 | Bolt, Hex Head 3/8-16 x 3/4 |
| 14 | 532 19 70-76 | Sems 1/4-20 x 5/8 | 39 | 532 19 71-50 | Handle Bracket Assembly, LH | | --- | Engine, Honda, Model Number GCV160-LAOS3A |
| 15 | 532 41 13-34 | Back Plate | 40 | 532 19 71-51 | Handle Bracket Assembly, RH | | | (For engine service and replacement parts, call Honda Engines at 1-800-426-7701) |
| 16 | 532 17 71-33 | Discharge Baffle | 41 | 532 15 04-06 | Screw, Hex Head, Threaded, Rolled 3/8-16 x 1-1/8 | 65 | 532 19 74-80 | O-Ring |
| 17 | 532 14 89-41 | Rear Baffle | 42 | 532 19 30-00 | Spring, Torsion | 67 | 532 18 20-03 | Clip, Packaging |
| 18 | 532 13 20-04 | Keps Locknut 1/4-20 | 43 | 873 80 04-00 | Nut, Hex, Nylock | 69 | 532 19 79-91 | Clip, Cable |
| 19 | 532 19 47-88 | Rope Guide | 44 | 532 43 30-85 | Kit, Mower Housing (Includes Key Numbers 14, 15 and 51) | 70 | 532 16 42-65 | Grip, Foam |
| 20 | 532 41 31-60 | Rear Skirt | 45 | 532 17 56-50 | Rod, Hinge | 71 | 532 43 50-59 | Belt Keeper |
| 21 | 532 40 54-21 | Spring, Rear Door, LH | 46 | 532 42 12-48 | Blade Adapter / Pulley | - | 532 40 47-64 | Warning Decal (not shown) |
| 24 | 532 40 54-23 | Spring, Rear Door, RH | 47 | 532 40 67-13 | Blade, 22" | - | 532 19 37-33 | Operator's Manual, English |
| 25 | 532 40 91-49 | Nut, Hex, Flanged | 48 | 532 85 10-74 | Washer, Hardened | - | 532 19 37-36 | Operator's Manual, French |
| 26 | 532 18 41-93 | Bolt, Rear Door | 49 | 532 85 02-63 | Washer, Helical | - | 532 43 81-92 | Repair Parts Manual |
| 27 | 532 40 29-48 | Wheel & Tire Assembly, Rear | | | | | | |

NOTE: All component dimensions given in U.S. inches. 1 inch = 25.4 mm.

IMPORTANT: Use only Original Equipment Manufacturer (O.E.M.) replacement parts. Failure to do so could be hazardous, damage your lawn mower and void your warranty.

ROTARY LAWN MOWER - - MODEL NUMBER 961440005 (MFG. ID. NO. 96144000501)



ROTARY LAWN MOWER - - MODEL NUMBER 961440005 (MFG. ID. NO. 96144000501)

| KEY NO. | PART NO. | DESCRIPTION | KEY NO. | PART NO. | DESCRIPTION |
|------------|--------------|---|------------|---------------------|--|
| 1 | 532 43 31-61 | Drive Control Assembly (Includes Cable) | 29 | 532 40 91-48 | Locknut, Hex |
| 3 | 532 16 45-57 | Bracket, Downstop | 32 | 532 19 40-18 | Pulley, Drive |
| 6 | 532 75 06-34 | Screw | 33 | 532 19 68-57 | V-Belt |
| 7 | 532 41 78-19 | Bar, Drive Control | 35 | 532 43 84-85 | Kit, Wheel Adjuster, LH (Includes Knob and Bearing) |
| 11 | 532 40 05-43 | Wheel & Tire Assembly, Front | 36 | 532 40 48-34 | Gear Case Assembly, Complete |
| 12 | 812 00 00-58 | E-Ring | 38 | 873 80 04-00 | Locknut 1/4-20 |
| 13 | 532 40 38-49 | Pinion | 40 | 532 40 65-58 | Spring |
| 14 | 532 18 94-03 | Dust Cover | 41 | 532 43 84-86 | Kit, Wheel Adjuster, RH (Includes Knob and Bearing) |
| 15 | 532 40 48-45 | Pawl, Drive | 54 | 532 43 30-93 | Grassbag Assembly |
| 16 | 532 06 77-25 | Washer, Flat 3/8 | 57 | 532 41 19-52 | Frame, Grassbag |
| 17 | 532 19 10-39 | Bearing, Wheel Adjuster | 80 | 532 42 11-14 | Water Washout Assembly |
| 18 | 532 70 10-37 | Selector Knob | 81 | 532 41 97-35 | Fitting, Hose, Water Washout |
| 25 | 532 41 16-63 | Belt Keeper | 82 | 532 41 55-85 | Washer, Lock, Internal Tooth |
| 26 | 532 16 34-09 | Screw, Hi-Lo Thread | 83 | 532 41 55-86 | Locknut, Hex, with O-Ring |
| 27 | 532 17 52-62 | Pan Head Tapping Screw #10-24 x 2-3/4 | | | |
| 28 | 532 19 60-56 | Drive Cover | | | |