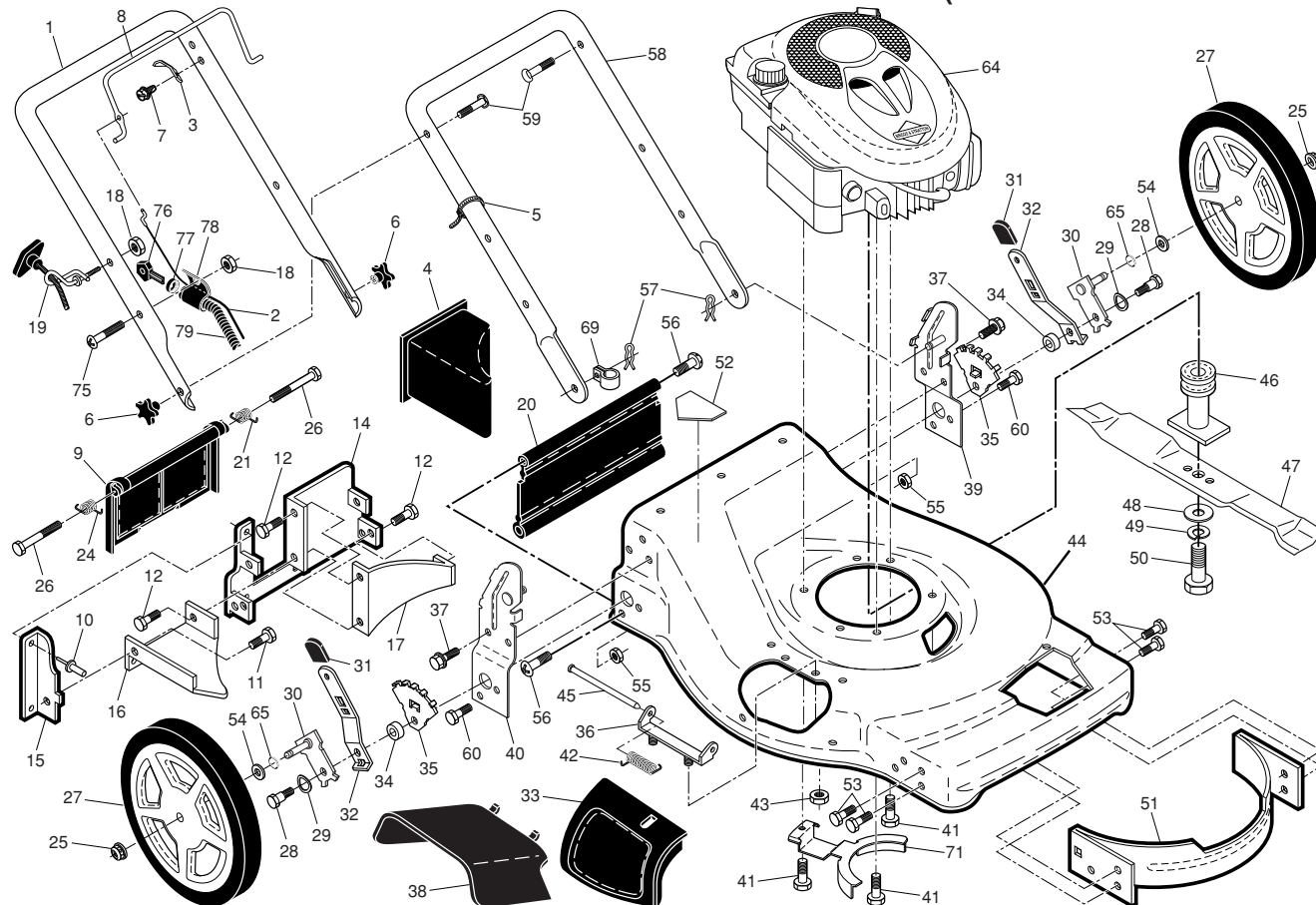


ROTARY LAWN MOWER - - MODEL NUMBER PR625Y22RKP (MFG. ID. NO. 96142007700)

2



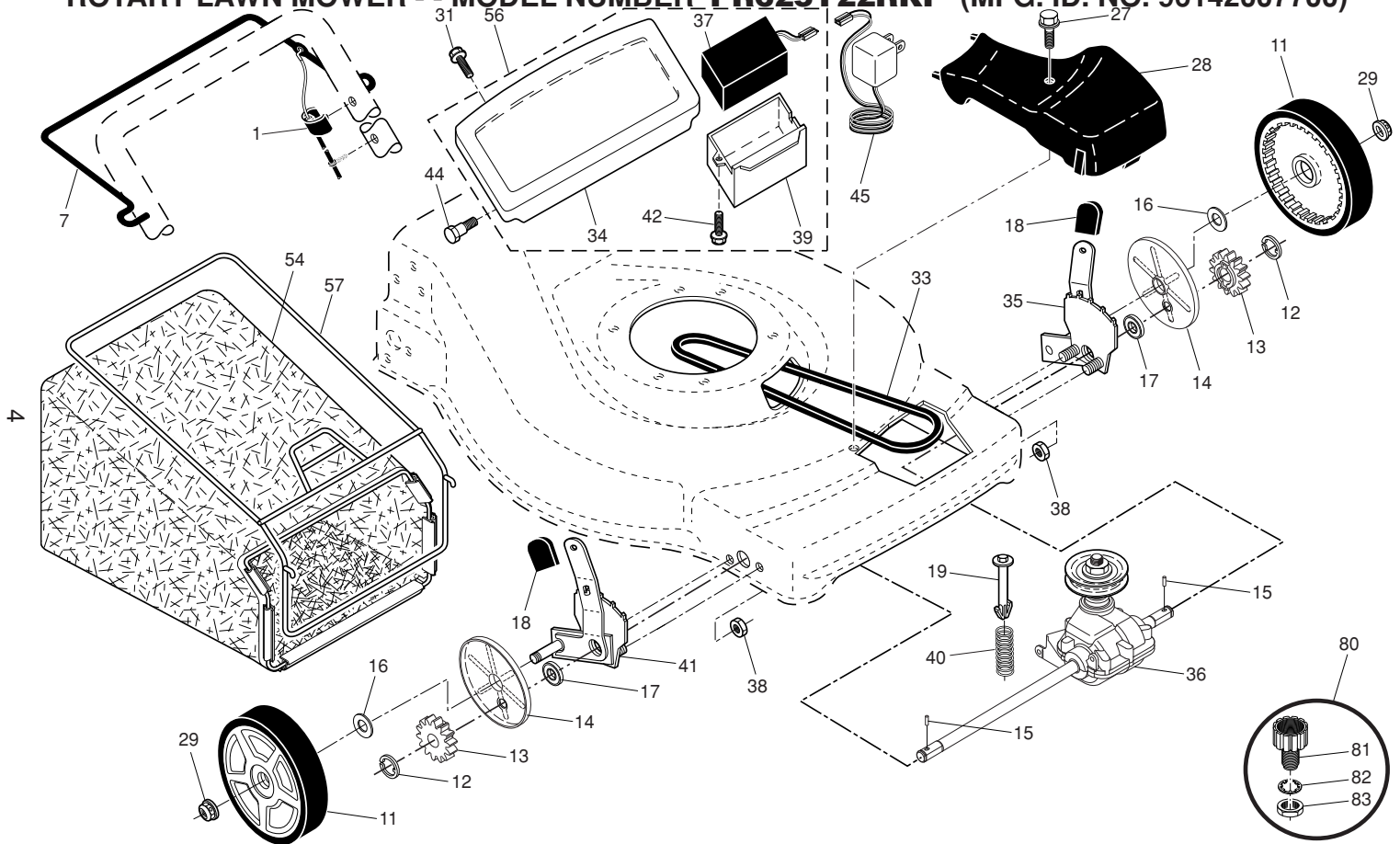
ROTARY LAWN MOWER - - MODEL NUMBER PR625Y22RKP (MFG. ID. NO. 96142007700)

3	KEY NO.	PART NO.	DESCRIPTION	KEY NO.	PART NO.	DESCRIPTION	KEY NO.	PART NO.	DESCRIPTION
	NO.	NO.		NO.	NO.		NO.	NO.	
	1	427619X479	Upper Handle	29	401630	Washer, Curved, Cylindrical	51	170031	Kit, Front Baffle
	2	401994	Cable, Operator Presence	30	401180X004	Axle Arm Assembly			(Includes Key Number 53)
	3	850733X004	Bracket, Upstop	31	701037X421	Selector Knob	52	404763	Danger Decal
	4	166649	Mulcher Plug	32	401626X004	Selector Spring	53	17600406	Screw, Serrated, TT 1/4-20
	5	66426	Wire Tie	33	189917X428	Mulcher Door	54	88348	Washer, Flat
	6	195552	Handle Knob	34	401629	Spacer	55	73930600	Nut, Hex 3/8-16
	7	750634	Screw	35	700325X005	Wheel Adjusting Bracket	56	88652	Hinge Screw 1/4-20 x 1-1/4
	8	427414X421	Control Bar	36	175735	Hinge Bracket Assembly	57	51793	Hairpin Cotter
	9	401813X428	Rear Door Assembly	37	428867	Screw, Sems, Thread Cutting	58	400512X479	Lower Handle
	10	128415	Pop Rivet			5/16-18 x 3/4	59	191574	Handle Bolt
	11	150050	Screw, Self-Tapping	38	402574X428	Discharge Deflector	60	74760612	Bolt, Hex Head 3/8-16 x 3/4
			#10-24 x 5/8	39	195915X479	Handle Bracket Assembly, LH	64	- - -	Engine, Briggs & Stratton,
	12	17060410	Screw, Hex Hex Head,	40	195914X479	Handle Bracket Assembly, RH			Model Number 124T05-0947-
			Sems 1/4-20 x 1/2	41	150406	Screw, Hex Head, Threaded,			EA (For engine service and
	14	195622X479	Back Plate			Rolled 3/8-16 x 1-1/8			replacement parts, call Briggs
	15	410545X479	Side Baffle	42	193000	Spring, Torsion			& Stratton at 1-800-233-3723)
	16	176655X479	Discharge Baffle	43	73800400	Nut, Hex, Nylock	65	197480	O-Ring
	17	140661X479	Rear Baffle	44	430511	Kit, Mower Housing (Includes	69	197991	Clip, Cable
	18	132004	Keps Locknut 1/4-20			Key Numbers 14, 15 and 51)	71	422044X004	Belt Keeper
	19	194788	Rope Guide	45	175650	Rod, Hinge	75	186159	Screw
	20	413160	Rear Skirt	46	421176	Blade Adapter / Pulley	76	180331	Key
	21	405421	Spring, Rear Door, LH	47	406713	Blade, 22"	77	194848	Nut, Cap
	24	405423	Spring, Rear Door, RH	48	851074	Washer, Hardened	78	189686	Key Start Switch
	25	409149	Nut, Hex, Flanged	49	850263	Washer, Helical	79	409567	Wiring Harness
	26	184193	Bolt, Rear Door	50	851084	Screw, Machine, Hex Head	- -	404764	Warning Decal (not shown)
	27	195012X428	Wheel & Tire Assembly, Rear			3/8-24 x 1-3/8 Grade 8	- -	193733	Operator's Manual, English
	28	174719	Bolt, Shoulder 3/8-16 x 1				- -	193736	Operator's Manual, French
							- -	430563	Repair Parts Manual

NOTE: All component dimensions given in U.S. inches. 1 inch = 25.4 mm.

IMPORTANT: Use only Original Equipment Manufacturer (O.E.M.) replacement parts. Failure to do so could be hazardous, damage your lawn mower and void your warranty.

ROTARY LAWN MOWER - - MODEL NUMBER **PR625Y22RKP** (MFG. ID. NO. 96142007700)



ROTARY LAWN MOWER - - MODEL NUMBER **PR625Y22RKP** (MFG. ID. NO. 96142007700)

KEY NO.	PART NO.	DESCRIPTION
1	194653	Drive Control Assembly (Includes Cable)
7	194185X421	Bar, Drive Control
11	193912X428	Wheel & Tire Assembly, Front
12	12000058	E-Ring
13	403849	Pinion
14	189403	Dust Cover
15	404845	Pawl, Drive
16	67725	Washer, Flat 3/8
17	191039	Bearing, Wheel Adjuster
18	701037X421	Selector Knob
19	150495	Retainer, Spring
27	175262	Pan Head Tapping Screw #10-24 x 2-3/4
28	401271X428	Drive Cover
29	409148	Locknut, Hex
31	141841	Screw, Trimplate
33	146527	V-Belt
34	411190	Trimplate
35	424201	Kit, Wheel Adjuster, LH (Includes Knob and Bearing)

KEY NO.	PART NO.	DESCRIPTION
36	415226	Gear Case Assembly, Complete
37	189589	Battery
38	73800400	Locknut 1/4-20
39	186237	Battery Box
40	137090	Spring
41	424200	Kit, Wheel Adjuster, RH (Includes Knob and Bearing)
42	17411308	Screw, Battery Box
44	175551	Screw, Trimplate
45	190097	Charger, Battery
54	411062	Grassbag Assembly
56	191252	Trimplate/Battery Box/Battery Assembly
57	411952	Frame, Grassbag
80	421114	Water Washout Assembly
81	419735	Fitting, Hose, Water Washout
82	415585	Washer, Lock, Internal Tooth
83	415586	Locknut, Hex, with O-Ring

NOTE: All component dimensions given in U.S. inches. 1 inch = 25.4 mm.

IMPORTANT: Use only Original Equipment Manufacturer (O.E.M.) replacement parts. Failure to do so could be hazardous, damage your lawn mower and void your warranty.