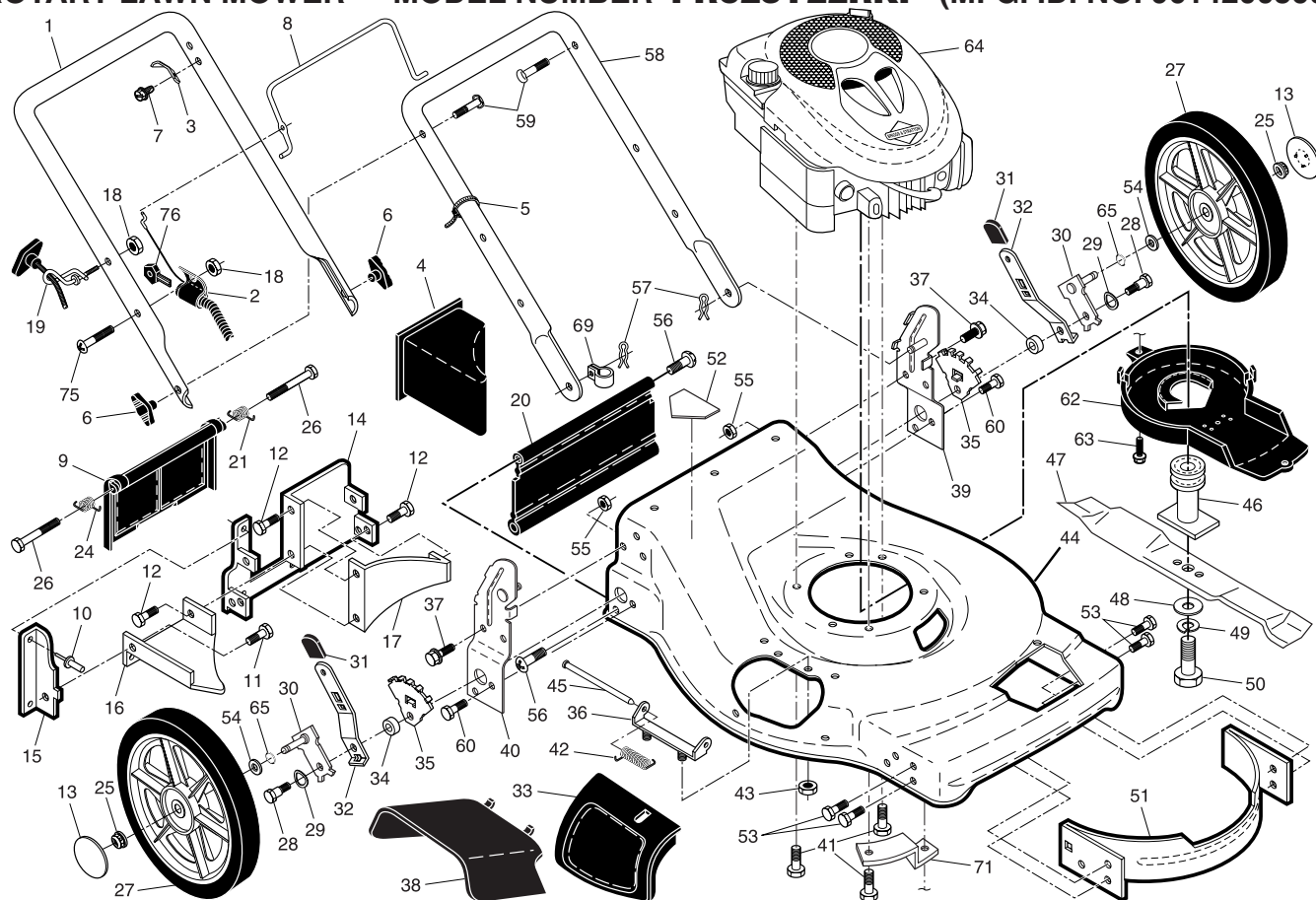


ROTARY LAWN MOWER - - MODEL NUMBER PR625Y22RKP (MFG. ID. NO. 96142003600)

2



ENGINE STOP CABLE - #401994

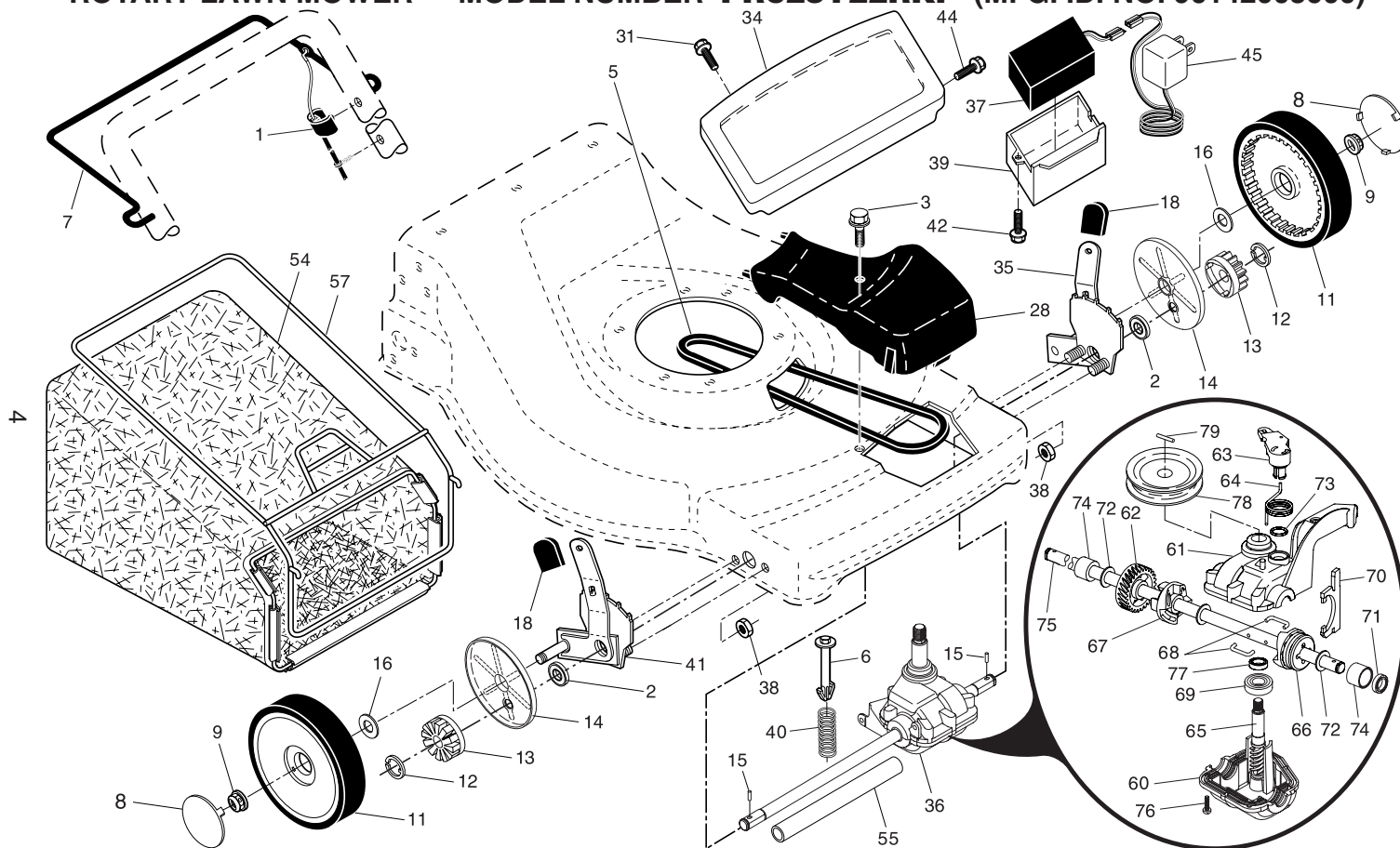
ROTARY LAWN MOWER - - MODEL NUMBER PR625Y22RKP (MFG. ID. NO. 96142003600)

KEY NO.	PART NO.	DESCRIPTION	KEY NO.	PART NO.	DESCRIPTION	KEY NO.	PART NO.	DESCRIPTION
1	194203X479	Upper Handle	28	142748	Bolt, Shoulder 3/8-16 x 1	51	170031	Kit, Front Baffle
2	189686	Key Start Switch (Includes Key)	29	401630	Washer, Curved, Cylindrical			(Includes Key Number 53)
3	850733X004	Bracket, Upstop	30	401180X004	Axle Arm Assembly	52	404763	Danger Decal
4	166649	Mulcher Plug	31	701037X421	Selector Knob	53	17600406	Screw, Serrated, TT 1/4-20
5	66426	Wire Tie	32	401626X004	Selector Spring	54	88348	Washer, Flat
6	189713X428	Handle Knob	33	189917X428	Mulcher Door	55	751592	Nut, Hex 3/8-16
7	750634	Screw	34	401629	Spacer	56	88652	Hinge Screw 1/4-20 x 1-1/4
8	194199X421	Control Bar	35	700325X005	Wheel Adjusting Bracket	57	51793	Hairpin Cotter
9	401813X428	Rear Door Assembly	36	175735	Hinge Bracket Assembly	58	400512X479	Lower Handle
10	128415	Pop Rivet	37	150078	Screw, Sems, Thread Cutting 5/16-18 x 3/4	59	191574	Handle Bolt
11	150050	Screw, Self-Tapping #10-24 x 5/8	38	402574X428	Discharge Deflector	60	74760612	Bolt, Hex Head 3/8-16 x 3/4
12	54583	Screw, Hex Hex Head, Sems 1/4-20 x 1/2	39	195915X479	Handle Bracket Assembly, LH	62	405843	Debris Shield
13	407794X421	Hubcap	40	195914X479	Handle Bracket Assembly, RH	63	192325	Screw, Debris Shield
14	195622X479	Back Plate	41	150406	Screw, Hex Head, Threaded, Rolled 3/8-16 x 1-1/8	64	- - -	Engine, Briggs & Stratton, Model Number 122T05
15	410545X479	Side Baffle	42	193000	Spring, Torsion			
16	176655X479	Discharge Baffle	43	73800400	Nut, Hex, Nylock	65	197480	O-Ring
17	140661X479	Rear Baffle	44	412221	Kit, Mower Housing (Includes Key Numbers 14, 15 and 51)	69	197991	Clip, Cable
18	132004	Keps Locknut 1/4-20	45	175650	Rod, Hinge	71	188839X004	Mounting Bracket, Debris Shield
19	194788	Rope Guide	46	189179	Blade Adapter / Pulley			
20	189008	Rear Skirt	47	406713	Blade, 22"	75	186159	Screw
21	405421	Spring, Rear Door, LH	48	851074	Washer, Hardened	76	180331	Key
24	405423	Spring, Rear Door, RH	49	850263	Washer, Helical	- -	404764	Warning Decal (not shown)
25	145212	Nut, Hex, Flanged	50	851084	Screw, Machine, Hex Head 3/8-24 x 1-3/8 Grade 8	- -	193732	Operator's Manual, English
26	184193	Bolt, Rear Door				- -	193734	Operator's Manual, French
27	408852X421	Wheel & Tire Assembly, Rear				- -	412218	Repair Parts Manual

NOTE: All component dimensions given in U.S. inches. 1 inch = 25.4 mm.

IMPORTANT: Use only Original Equipment Manufacturer (O.E.M.) replacement parts. Failure to do so could be hazardous, damage your lawn mower and void your warranty.

ROTARY LAWN MOWER - - MODEL NUMBER **PR625Y22RKP** (MFG. ID. NO. 96142003600)



ROTARY LAWN MOWER - - MODEL NUMBER **PR625Y22RKP** (MFG. ID. NO. 96142003600)

KEY NO.	PART NO.	DESCRIPTION
1	194653	Drive Control Assembly (Includes Cable)
2	191039	Bearing, Wheel Adjuster
3	175262	Pan Head Tapping Screw #10-24 x 2-3/4
5	146527	V-Belt
6	150495	Retainer, Spring
7	194185X421	Bar, Drive Control
8	407793X421	Hubcap
9	83923	Locknut, Hex
11	180775	Wheel & Tire Assembly, Front
12	12000058	E-Ring
13	403849	Pinion
14	189403	Dust Cover
15	191017	Pawl, Drive
16	67725	Washer, Flat 3/8
18	701037X421	Selector Knob
28	401271X428	Drive Cover
31	141841	Screw, Trimplate
34	186153	Trimplate
37	189589	Battery
39	186237	Battery Box
35	408802	Kit, Wheel Adjuster, LH (Includes Knob and Bearing)
36	199206	Gear Case Assembly, Complete
38	73800400	Locknut 1/4-20
40	137090	Spring
41	408803	Kit, Wheel Adjuster, RH (Includes Knob and Bearing)

KEY NO.	PART NO.	DESCRIPTION
42	17411308	Screw, Battery Box
44	175551	Screw, Trimplate
45	190097	Charger, Battery
54	412219	Grassbag Assembly
55	86012	Driveshaft Cover
57	407454	Frame, Grassbag
60	183497	* Case, Lower
61	183498	* Case, Upper
62	183499	Gear, 27 Teeth
63	183500	Lever, Clutch
64	183501	Spring, Return
65	183502	Shaft, Input
66	183503	Dog, Movable
67	183504	Dog, Fixed
68	183505	Wire, Formed
69	183506	Bearing, Ball
70	183507	Fork, Shift
71	183508	Seal, Output Shaft
72	183509	Washer
73	183510	Seal, Case
74	183511	Bushing
75	196561	Shaft, Output
76	183513	Screw
77	183514	Seal, Input Shaft
78	199852	Pulley, Drive
79	199419	Pin, Retainer

* Use Dow Corning #709 to reseal Gear Case Halves.

NOTE: All component dimensions given in U.S. inches. 1 inch = 25.4 mm.

IMPORTANT: Use only Original Equipment Manufacturer (O.E.M.) replacement parts. Failure to do so could be hazardous, damage your lawn mower and void your warranty.