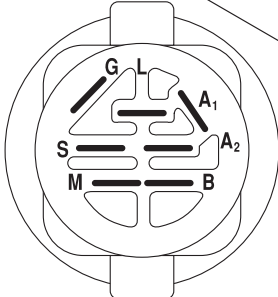
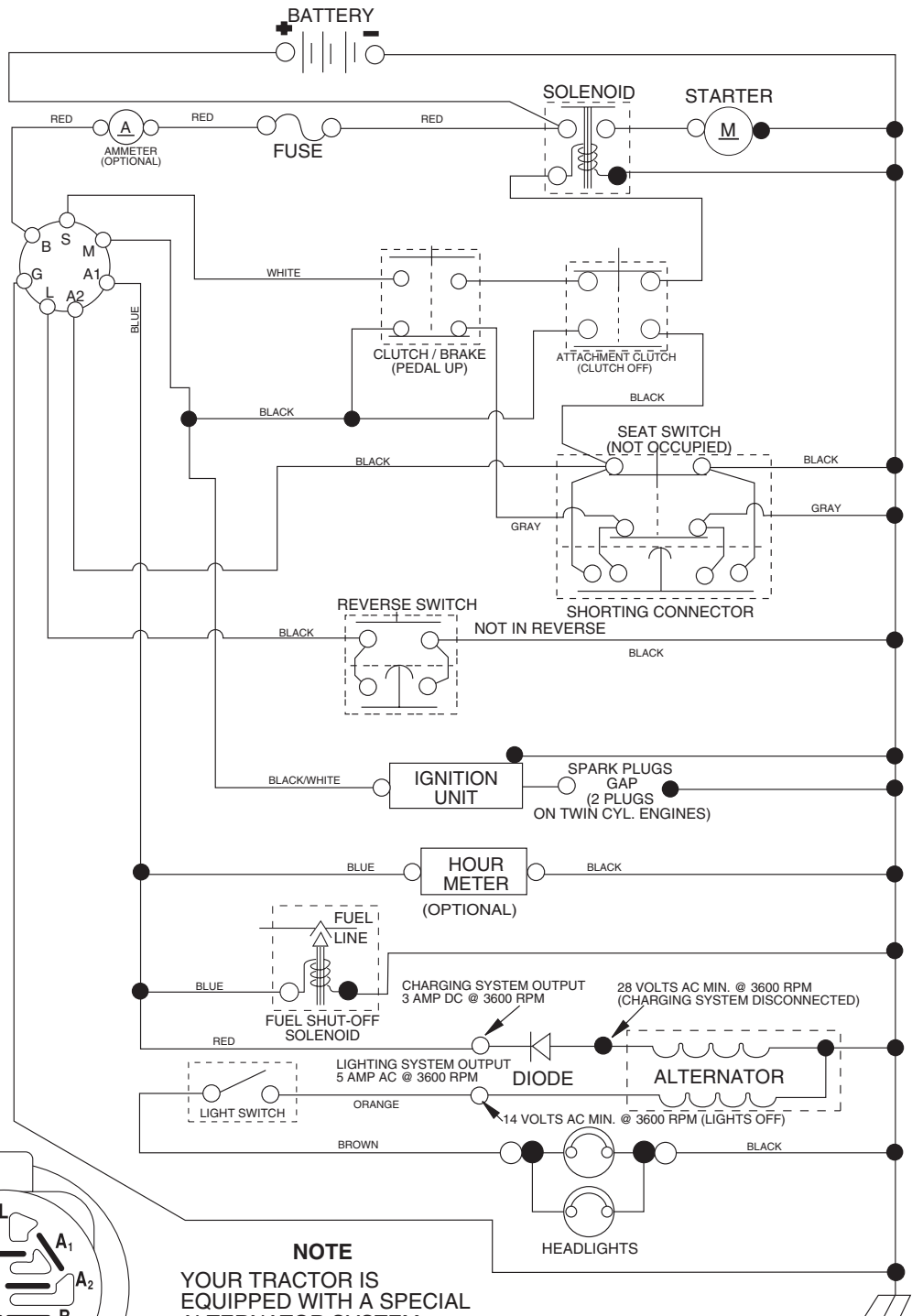


REPAIR PARTS

TRACTOR - - MODEL NUMBER PB195H42LT (96042003601), PRODUCT NO. 960 42 00-36
SCHEMATIC



IGNITION SWITCH

POSITION	CIRCUIT	"MAKE"
OFF	M+G+A1	
RUN/OVERRIDE	B+A1	
RUN	B+A1	L+A2
START	B + S + A1	

NOTE
YOUR TRACTOR IS EQUIPPED WITH A SPECIAL ALTERNATOR SYSTEM. THE LIGHTS ARE NOT CONNECTED TO THE BATTERY, BUT HAVE THEIR OWN ELECTRICAL SOURCE. BECAUSE OF THIS, THE BRIGHTNESS OF THE LIGHTS WILL CHANGE WITH ENGINE SPEED. AT IDLE THE LIGHTS WILL DIM. AS THE ENGINE IS SPEEDED UP, THE LIGHTS WILL BECOME THEIR BRIGHTEST.

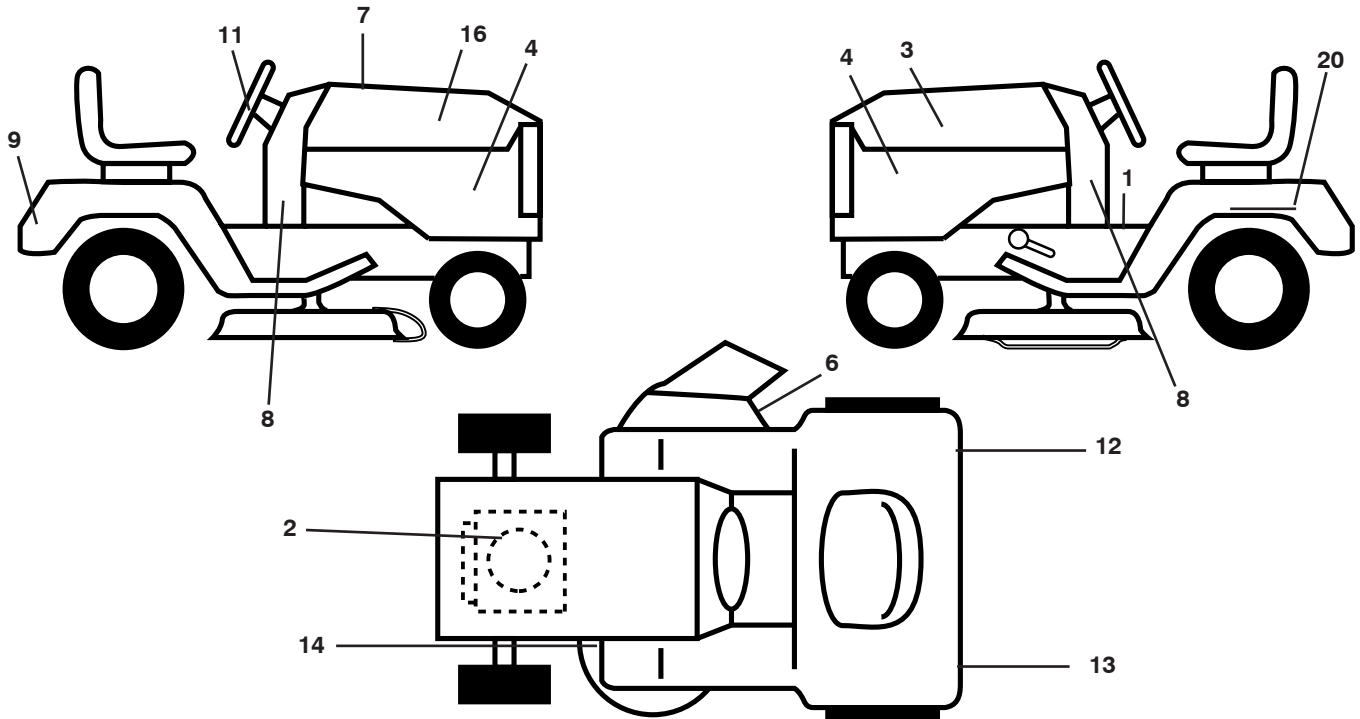
02836



WIRING INSULATED CLIPS
NOTE: IF WIRING INSULATED CLIPS WERE REMOVED FOR SERVICING OF UNIT, THEY SHOULD BE REPLACED TO PROPERLY SECURE YOUR WIRING.

REPAIR PARTS

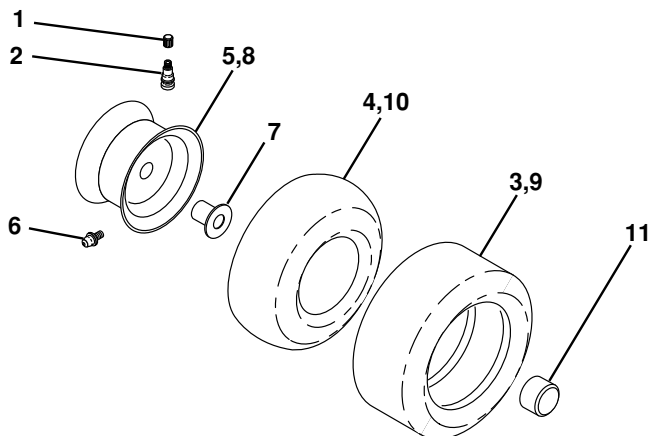
TRACTOR - - MODEL NUMBER PB195H42LT (96042003601), PRODUCT NO. 960 42 00-36
DECALS



KEY NO.	PART NO.	DESCRIPTION
1	199114	Decal Oper
2	408834	Decal Engine H.P.
3	186164	Decal Hood LH
4	408794	Decal Side Panel
6	170563	Decal Warning, Keep Hand Away
7	412245	Decal Replacement Parts
8	411175	Decal LWRDASH
9	172740	Decal Fender Logo
11	172743	Decal Ins Strg Whl
12	408948	Decal Fender SD RH

KEY NO.	PART NO.	DESCRIPTION
13	408949	Decal Fender SD LH
14	160396	Decal V-Belt Schematic
16	186163	Decal Hood Rh
20	145005	Decal Bat Dan/Psn
--	193226X428	Pad Footrest LH
--	193277X428	Pad Footrest RH
--	166960	Decal Bypass
--	411287	Manual Operator's E&F
--	411244	Manual Parts

WHEELS AND TIRES



KEY NO.	PART NO.	DESCRIPTION
1	59192	Cap Valve Tire
2	65139	Stem Valve
3	106222X	Tire F T 15 x 6 0 - 6 Service
4	59904	Tube Front (Service Item Only)
5	106732X421	Rim Asm 6" front Service
6	278H	Fitting Grease (Front Wheel Only)
7	9040H	Bearing Flange (Front Wheel nly)
8	106108X421	Rim Asm 8" rear Service
9	106268X	Tire R T 18 x 9.5-8 Service
10	7152J	Tube Rear (Service Item Only)
11	104757X421	Cap Axle Blk 1 50 x 1 00
--	144334	Sealant, Tire (10 oz. Tube)

NOTE: All component dimensions given in U.S. inches
1 inch = 25.4 mm

REPAIR PARTS

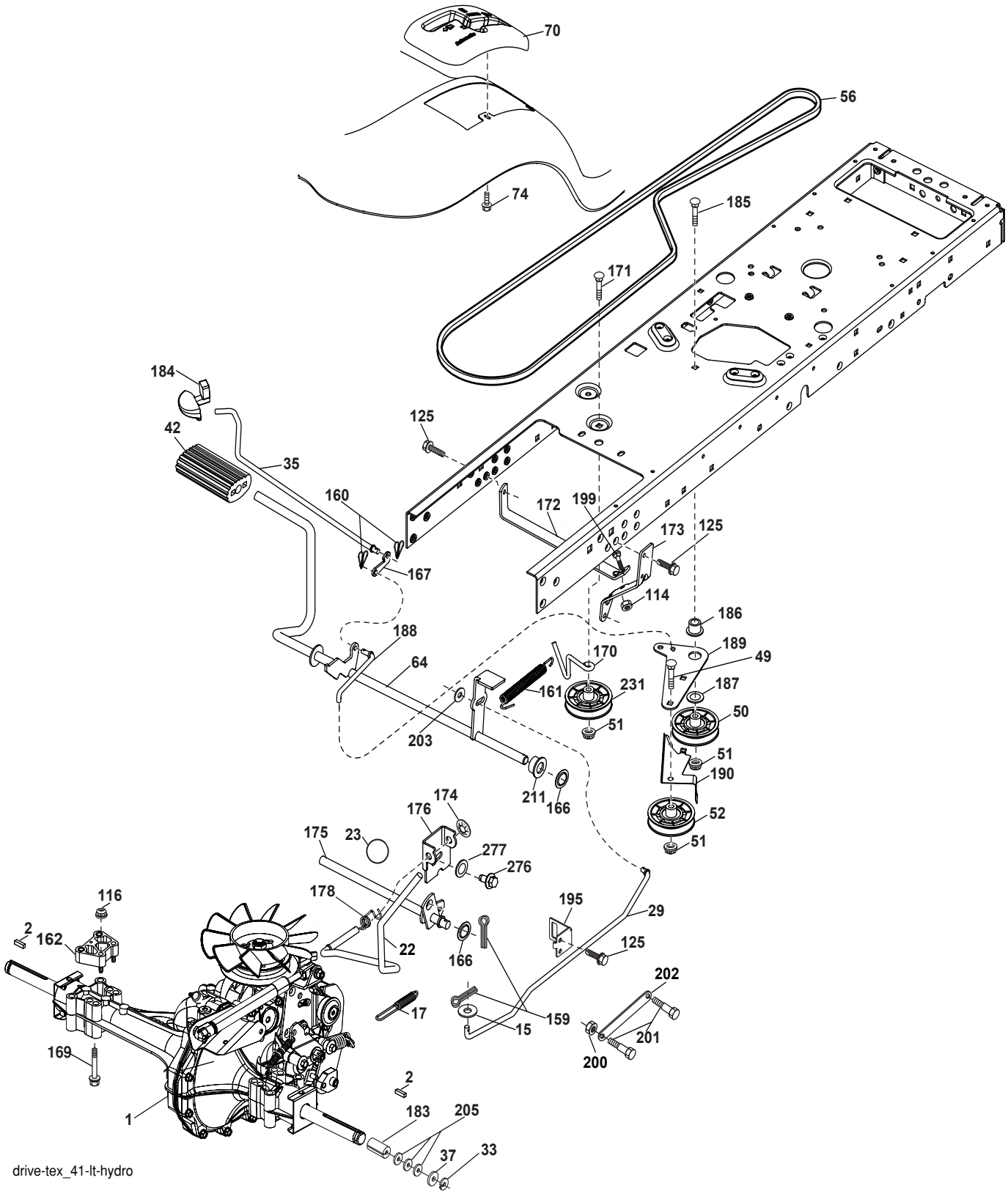
TRACTOR - - MODEL NUMBER PB195H42LT (96042003601), PRODUCT NO. 960 42 00-36
ELECTRICAL

KEY NO.	PART NO.	DESCRIPTION
1	163465	Battery
2	74760412	Bolt Hex Hd 1/4-20 unc x 3/4
8	193228	Box Battery
16	176138	Switch Interlock
21	183759	Harness Socket Light
22	4152J	Bulb, Light # 1156
25	401662	Cable Battery 6 Ga. Red 14.5
26	175158	Fuse
27	73510400	Nut Keps Hex 1/4-20 unc
28	198885	Cable Ground 18" Rear Battery Blk 6 Ga.
29	401545	Switch Seat
30	193350	Switch Ign
33	140401	Key Ign Molded Generic
34	110712X	Switch Light/Reset
40	401098	Harness Ign
41	17720408	Screw 1/4-20 unc x 1/2
42	131563	Cover Terminal Red
43	192507	Solenoid
55	17060512	Screw 5/16-18 x 3/4
71	400449	Harness Ign. Chass.
90	400725	Cover Terminal
92	193465	Harness Pigtail Reverse Switch
93	192540	Screw Plastic 10-14 x 2.0
94	191834	Modual Reverse ROS

NOTE: All component dimensions given in U.S. inches
1 inch = 25.4 mm

REPAIR PARTS

TRACTOR - - MODEL NUMBER PB195H42LT (96042003601), PRODUCT NO. 960 42 00-36
DRIVE



drive-tex_41-It-hydro

REPAIR PARTS

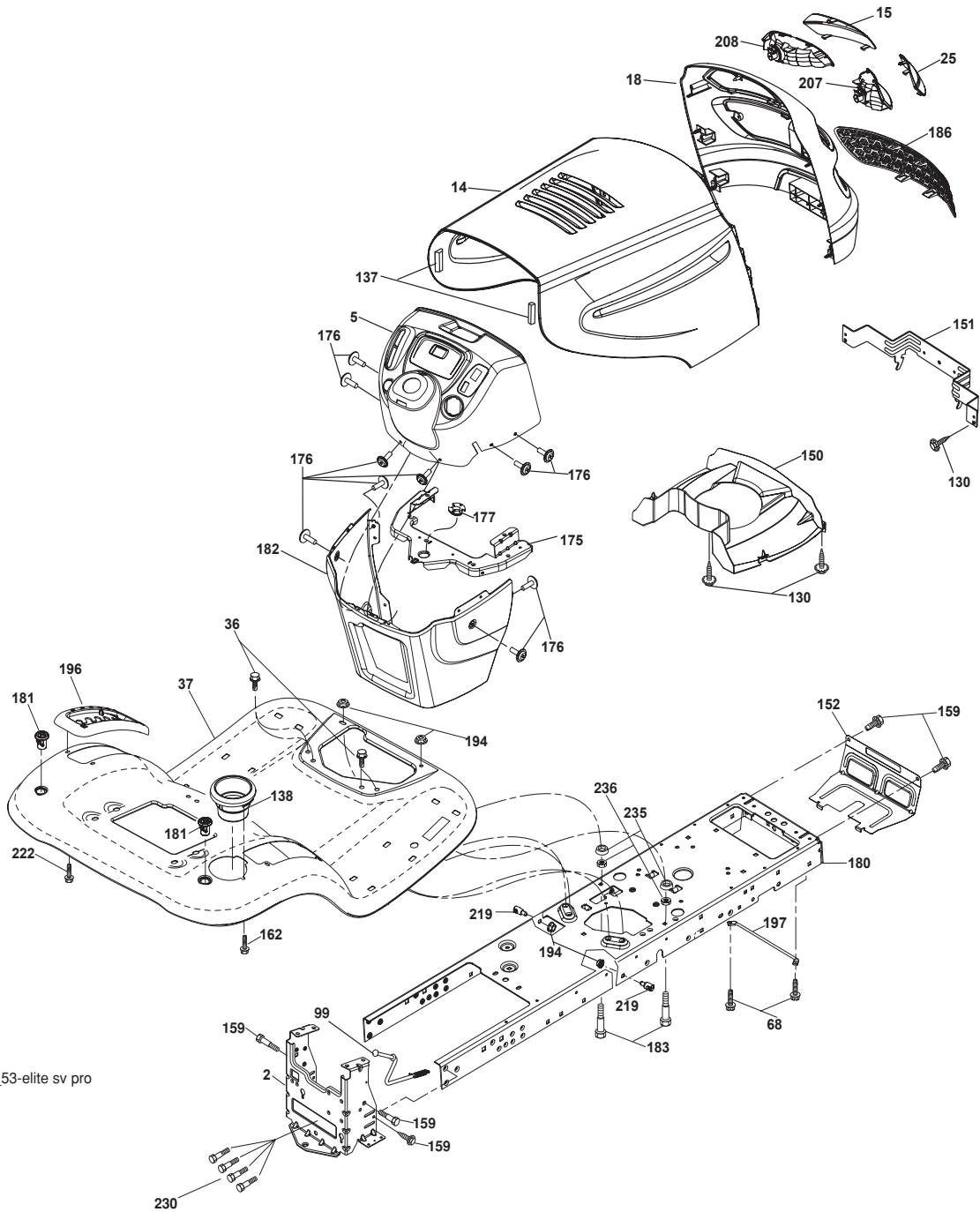
TRACTOR - - MODEL NUMBER PB195H42LT (96042003601), PRODUCT NO. 960 42 00-36
DRIVE

KEY NO.	PART NO.	DESCRIPTION	KEY NO.	PART NO.	DESCRIPTION
1	408799	Transaxle, Hydro Gear 351-0510 (See Transaxle Breakdown)	169	74490560	Bolt 5/16-18 x 3.75
2	123583X	Key Square	170	194322	Keeper Belt Centerspan
15	19131316	Washer 13/32 x 13/16 x 16 Ga.	171	72110622	Bolt
17	197296	Spring, Brake	172	197655	Strap Torque RH
22	197660	Rod Shift	173	197656	Strap Torque LH
23	409154X421	Knob	174	197289	Nut Push
29	197659	Rod, Brake	175	197653	Shaft Asm Shift
33	12000001	Ring E	176	196214	Arm Clevis Rod Shift
35	197722	Rod, Brake, Park	178	197456	Spring Shift
37	121749X	Washer 25/32 x 1-1/4 x 16 Ga.	183	137057	Spacer Axle
42	8883R	Cover, Foot Pedal	184	198403X505	Handle Parking Brake
49	72110614	Bolt	185	72110620	Bolt
50	194327	Pulley Idler Flat	186	194321	Spacer Retainer
51	73900600	Lock Nut 3/8-16	187	19133210	Washer
52	194326	Idler V-Groove 910" Offset	188	194323	Link Clutch Ground Drive
56	140218	V-Belt, Drive	189	194317	Bellcrank Ground Drive
64	196200	Shaft Asm. Pedal Brake Control	190	194318	Keeper Bellcrank Ground Drive
70	193220X428	Console	195	198012	Bracket Brake Rod
74	142432	Screw 1/4 x 1/2	199	72140508	Bolt 5/16-18 UNC x 1
114	73800500	Nut Lock 5/16-18 UNC	200	73930500	Nut Centerlock 5/16-18 UNC
116	73900500	Nut Lock Hex Flange 5/16-18	201	169612	Bolt Shoulder 5/16-18 UNC
125	17000512	Screw 5/16-18 x 3/4	202	197715	Link Transaxle
159	76020412	Pin Cotter 1/8 x 3/4	203	19111116	Washer 11/32 x 11/16 x 16 Ga.
160	169484	Retainer Clip	205	121748X	Washer 25/32 x 1-5/8 x 16 Ga.
161	195403	Spring, Return, Clutch	211	196212	Bushing
162	195785	Spacer Transaxle	226	74780716	Bolt 7/16-14 x 1 Gr 5
166	197290	Nut Push .625	227	405296	Washer Serrated
167	405257	Latch Brake Parking	231	407287	Idler V-Groove 1.688" Offset

NOTE: All component dimensions given in U.S. inches
1 inch = 25.4 mm

REPAIR PARTS

TRACTOR - - MODEL NUMBER PB195H42LT (96042003601), PRODUCT NO. 960 42 00-36
CHASSIS



chassis-tex_53-elite sv pro

REPAIR PARTS

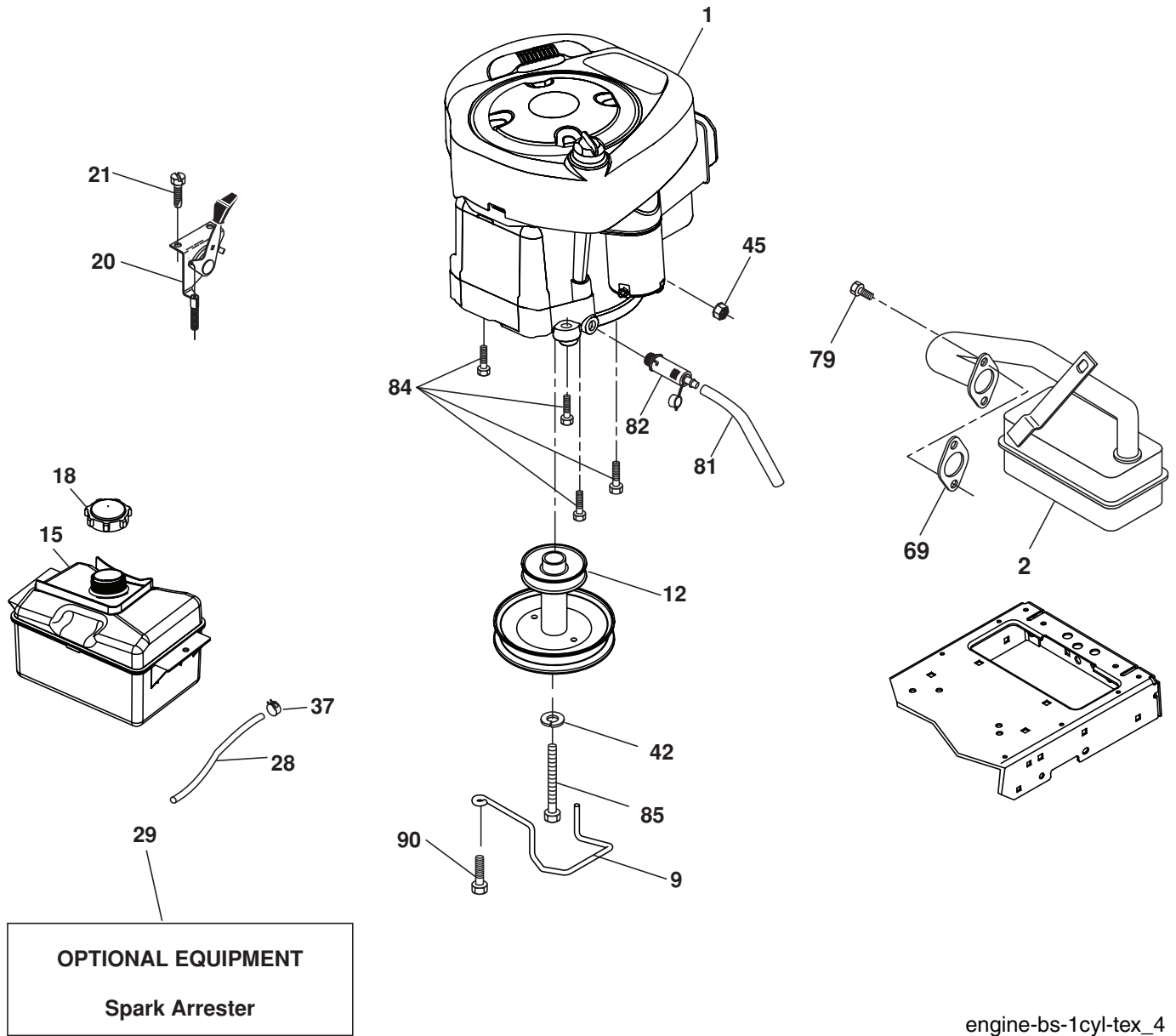
TRACTOR - - MODEL NUMBER PB195H42LT (96042003601), PRODUCT NO. 960 42 00-36
CHASSIS

KEY NO.	PART NO.	DESCRIPTION
2	194263	Drawbar
5	197783X428	Dash
14	183393X428	Hood
15	183834X599	Lens Grille LH
18	183828	Grille
25	183835X599	Lens Grille RH
36	17060512	Screw 5/16-18 x 3/4
37	193218X428	Fender
68	17490508	Screw Thdrol 5/16-18 x 1/2
99	403376	Rod Bypass
130	191611	Screw 10 x 3/4 Single Lead-Hex
137	184921	Bumper Hood
138	193224X428	Cupholder
150	184322	Duct Heat Hood
151	407807	Bracket Pivot
152	194329	Shield Browning/Debris
159	17000612	Screw Hexwsh Thdrol 3/8-16 x 3/4
162	142432	Screw Hex Wsh Hi-Lo 1/4 x 1/2
175	193243	Crossmember
176	400776	Screw 10-24 x 5/8 Wshd Qdrx
177	195228	Bushing Steering
180	194260	Chassis
181	193102X428	Bushing Mtg. Fender Crgo.
182	193057	Dash Lower
183	74780520	Bolt Fin Hex 5/16-18 x 1-1/4
186	183829X428	Insert Grille
194	73900500	Nut Lock Hex Flange 5/16-18
196	410584	Console Asm. Deck Lift
197	156524	Rod Pivot Chassis
207	183833	Bezel Grille RH
208	183832	Bezel Grille LH
219	195161	Stud Fastener
222	137729	Screw Thd Roll 1/4-20 x 5/8
230	170165	Bolt Shoulder 5/16-18
235	406129	Spacer Fender
236	73930500	Nut center Lock 5/16-18

NOTE: All component dimensions given in U.S. inches
1 inch = 25.4 mm

REPAIR PARTS

TRACTOR - - MODEL NUMBER PB195H42LT (96042003601), PRODUCT NO. 960 42 00-36
ENGINE



REPAIR PARTS

TRACTOR - - MODEL NUMBER PB195H42LT (96042003601), PRODUCT NO. 960 42 00-36
ENGINE

KEY NO.	PART NO.	DESCRIPTION	KEY NO.	PART NO.	DESCRIPTION
1	-----	Engine B&S Model No. 31P677	45	73510400	Nut Keps Hex 1/4-20 unc
2	137352	Muffler	69	165291	Gasket
9	194319	Keeper Belt Engine	79	192334	Screw Socket Hd 5/16-18 x .75
12	401985	Pulley Engine	81	148456	Tube Drain Oil Easy
15	407545	Tank Fuel 1.50	82	181654	Plug Drain Oil
18	197725	Cap Asm	84	17060620	Screw 3/8-16 x 1-1/4
20	176636X421	Control Throttle/Choke	85	173937	Bolt Hex 7/16-20 x 4 x Gr. 5-1.5
21	191611	Screw 10 x 3/4 Single Lead-Hex	90	17000612	Screw 3/8-16 x 1.0
28	401137	Fuel Line			
29	137180	Spark Arrester Kit			
37	123487X	Clamp Hose			
42	10040700	Washer Lock 7/16			

NOTE: All component dimensions given in U.S. inches
1 inch = 25.4 mm

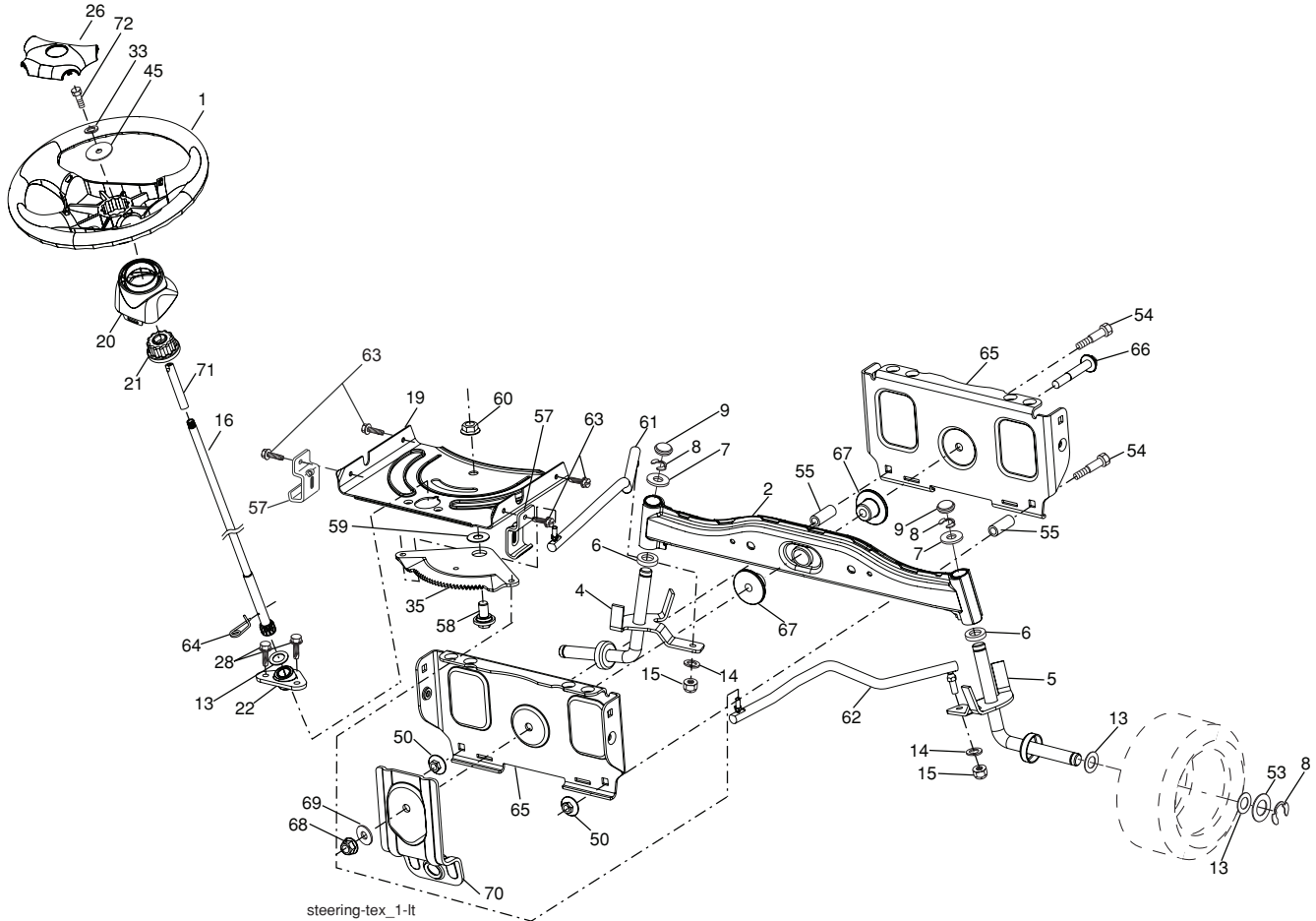
Engine Power Rating Information

The gross power rating for individual gas engine models is labeled in accordance with SAE (Society of Automotive Engineers) code J11940 (Small Engine Power & Torque Rating Procedure), and rating performance has been obtained and corrected in accordance with SAE J1995 (Revision 2002-5). Actual gross engine power will be lower and is affected by, among other things, ambient operating conditions and engine-to-engine variability. Given both the wide array of products on which engines are placed and the variety of environmental issues applicable to operating the equipment, the gas engine will not develop the rated gross power when used in a given piece of power equipment (actual "on-site" or net horsepower). This difference is due to a variety of factors including, but not limited to, accessories (air cleaner, exhaust, charging, cooling, carburetor, fuel pump, etc.), application limitations, ambient operating conditions (temperature, humidity, altitude), and engine-to-engine variability. Due to manufacturing and capacity limitations, Briggs & Stratton may substitute an engine of higher rated power for this Series engine.

REPAIR PARTS

TRACTOR - - MODEL NUMBER PB195H42LT (96042003601), PRODUCT NO. 960 42 00-36

STEERING

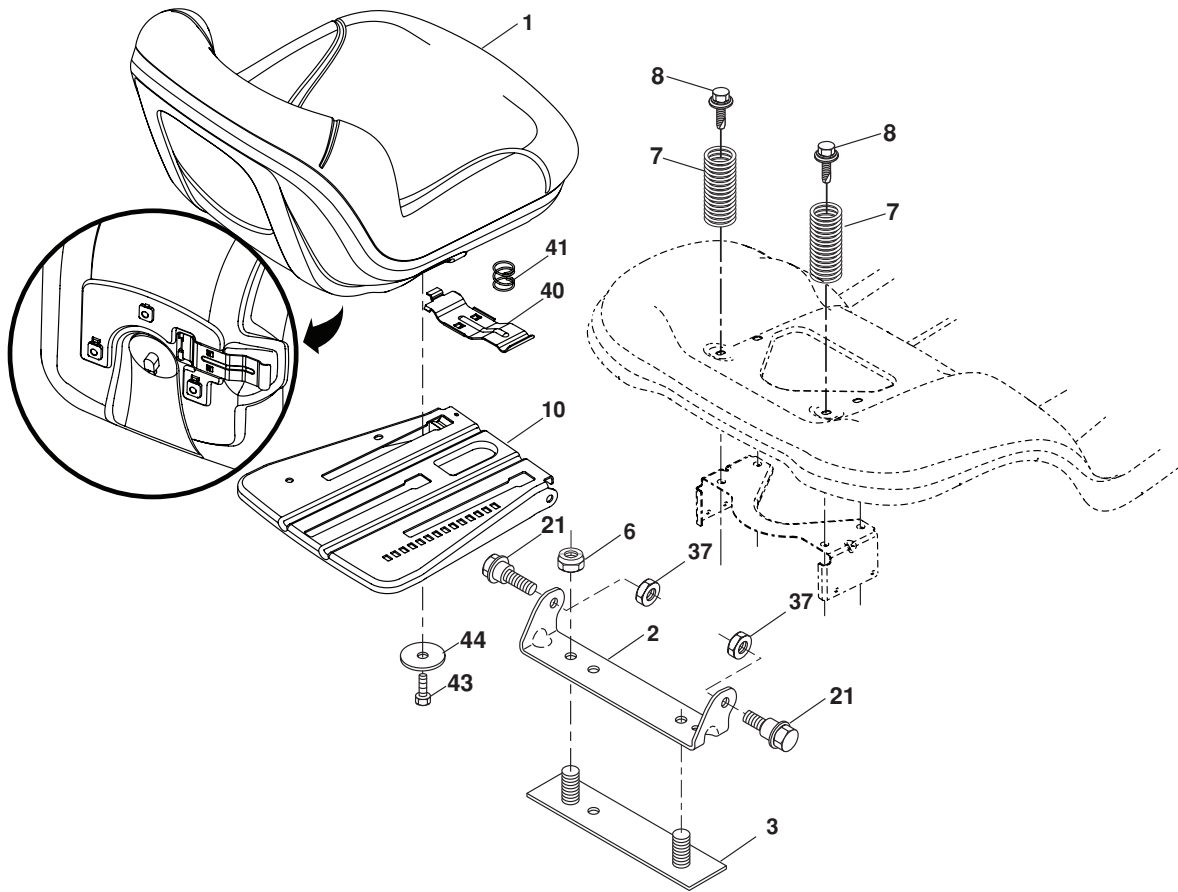


KEY NO.	PART NO.	DESCRIPTION	KEY NO.	PART NO.	DESCRIPTION
1	186093X428	Wheel, Steering	54	74760636	.060 Bolt Hex HS 3/8-16 unc x 2-1/4
2	195968	Axle Asm., Front	55	197636	Spacer Brace Axle
4	403087	Spindle Asm., LH	57	407465	Bracket Upstop
5	403088	Spindle Asm., RH	58	194747	Bolt Shoulder Sector Pivot CFM
6	6266H	Bearing, Race Thrust Harden	59	194748	Washer Thrust Sector Steering
7	121748X	Washer 25/32 x 1-5/8 x 16 Ga.	60	73971000	Nut Flange Lock 5/8-11
8	12000029	Ring, Klip #T5304-75	61	194740	Draglink LH
9	121232X	Cap, Spindle	62	194741	Draglink, RH
13	121749X	Washer 25/32 x 1-1/4 x 16 Ga.	63	17000512	Screw 5/16-18 x 3/4
14	10040600	Washer Lock 3/8	64	199849	Retainer Clip Spring Steering
15	73540600	Nut, Crown Lock 3/8-24 unf	65	194734	Brace Axle Front
16	196074	Shaft Steering	66	71020748	Bolt Hex Fghd 7/16-14 x 3 Serr
19	194729	Plate Steering	67	194737	Bushing PM Front Axle
20	198375X428	Boot, Steering	68	73900700	Nut Lock Flange 7/16-14 Gr. 5
21	186737	Adapter, Wheel Steering	69	199162	Washer 1.5 x .505 x .118
22	194845	Bushing, Strg. Blk	70	196197	Bracket Deck Susp. Front
26	186095X428	Insert, Wheel Steering	71	196075	Shaft Ext. Steering
28	17000612	Screw 3/8-16 x 3/4	72	74780572	Bolt 5/16-18 x 4.5 Gr. 5
33	10040500	Washer Lock 5/16			
35	194732	Gear, Sector Plate			
45	19113812	Washer 11/32 x 2-3/8 x 12 Ga.			
50	73900600	Nut Lock Flg 3/8-16 unc			
53	188967	Washer Hardened .793 x 1.637 x			

NOTE: All component dimensions given in U.S. inches
1 inch = 25.4 mm

REPAIR PARTS

TRACTOR - - MODEL NUMBER PB195H42LT (96042003601), PRODUCT NO. 960 42 00-36
SEAT



seat-tex_7-vgt

KEY NO.	PART NO.	DESCRIPTION	KEY NO.	PART NO.	DESCRIPTION
1	406623	Seat	40	197661	Handle Slide
2	180166	Bracket Pivot Fender	41	198200	Spring Latch
3	140675	Strap, Asm Fender	43	74760612	Bolt 3/8-16 UNC x 3/4
6	73800600	Nut, Lock W/Ins. 3/8-16 unc	44	19133812	Washer 13/32 x 2 3/8 x 12 Ga.
7	124181X	Spring, Seat Cprsn			
8	171877	Bolt 5/16-18 uncx 3/4 w/Sems			
10	196977	Pan, Seat			
21	171852	Bolt, Shoulder 5/16-18			
37	73800500	Nut, Lock 5/16-18 unc			

NOTE: All component dimensions given in U.S. inches
1 inch = 25.4 mm

REPAIR PARTS

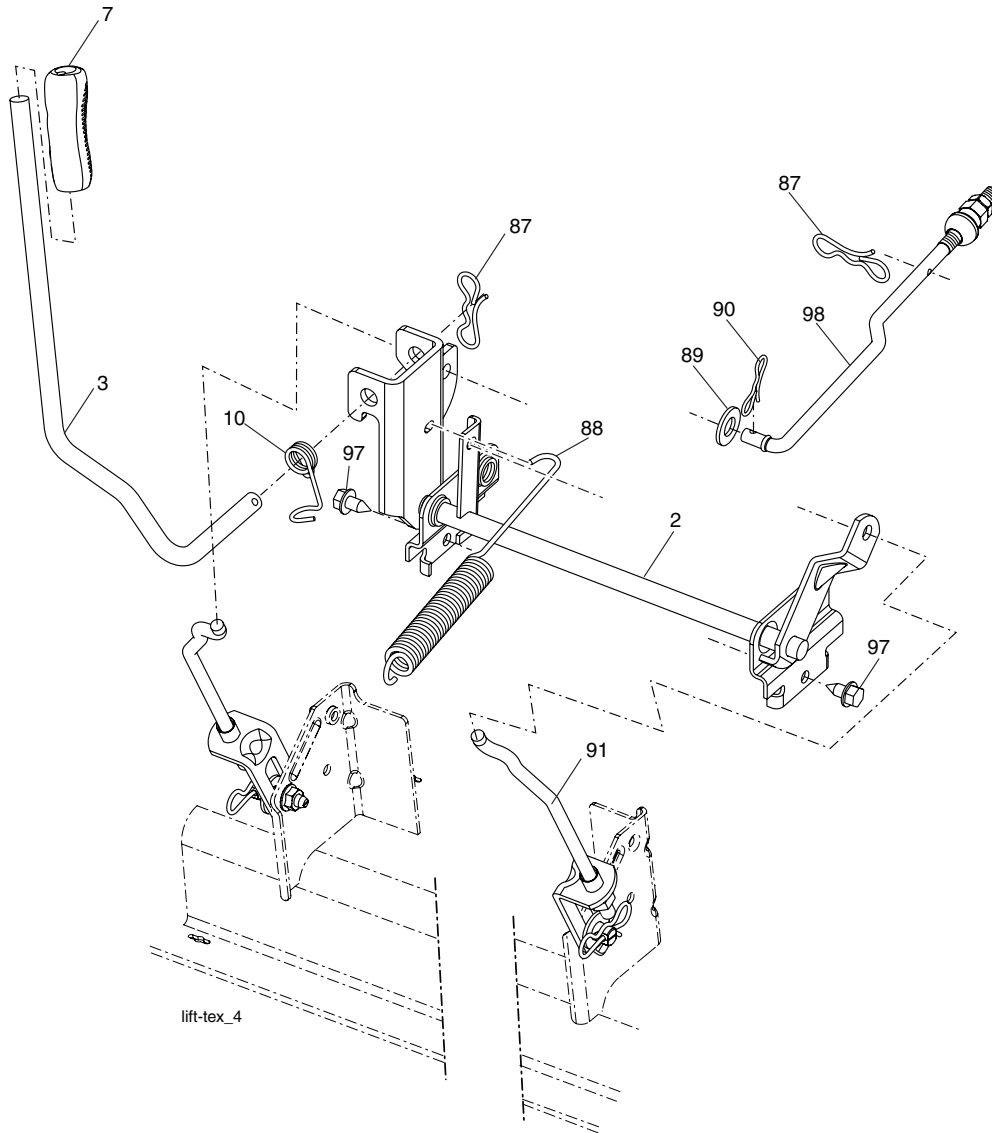
TRACTOR - - MODEL NUMBER PB195H42LT (96042003601), PRODUCT NO. 960 42 00-36
MOWER DECK

KEY NO.	PART NO.	DESCRIPTION	KEY NO.	PART NO.	DESCRIPTION
1	196495X421	Mower Housing	55	197249	Arm, Idler
5	4939M	Retainer Spring	56	199092	Spacer, Retainer
6	195186	Arm Suspension	57	17000616	Screw Hexwsh Thd 3/8-16 x 1
7	191611	Screw 10 x 3/4 Single Hex	59	141043	Guard, Tuv Idler (94)
8	193003	Bolt/Washer asm 7/16-20 unf	60	197402	Arm Brake Mower
--	139775	Blade, 42" Mulching Premium (For better wear when mulching)	62	72110616	Bolt Rdhd Sqnk 3/8-16 unc x 2
11	138971	Blade, 42" Hi-Lift (For bagging or discharge)	63	199478	Arm Brake Mower
--	134149	Blade, 42" Mulching Std (For mulching mowers only)	64	199918	Linkage Brake
13	192872	Shaft Assembly, Mandrel	67	198398X421	Handle, Clutch Cable
14	187281	Housing, Mandrel	68	197253	V-Belt
15	110485X	Bearing, Ball, Mandrel	69	72140505	Bolt Rdhd Sqnk 5/16-18 x 5/8
16	174493	Stripper, Mower Deck	70	198332	Clutch Asm. Manual
19	196539	Bolt, Shoulder	86	197798	Pin Attachment Cable
20	159770	Baffle, Vortex	87	197802	Switch Interlock
21	73680500	Nut, Crownlock 5/16-18 unc	113	17000510	Screw 5/16-18
23	192557	Bracket, Deflector	116	4898H	Bolt
24	105304X	Cap, Sleeve	117	188606	Wheel Gauge
25	197026	Spring, Torsion, Deflector	118	73930600	Nut Lock 3/8-16 UNC
26	110452X	Nut, Push	119	19121414	Washer 3/8-7/8 x 14 Ga.
27	193108X428	Shield, Deflector	122	197258	Keeper Belt Eng. LH
29	131491	Rod, Hinge	123	197259	Keeper Belt Eng. RH
30	173984	Screw Thdrol Rolling Wsh Hd	144	199204	Keeper Belt
31	187690	Washer, Spacer	145	177968	Pulley Idler
32	195945	Pulley, Mandrel	147	401971	Spring Return
33	400234	Nut, Toplock, Flanged	151	198331	Bracket Clutch CBL
34	72110612	Bolt Carr Sh. 3/8-16 x 1-1/2 Gr. 5	152	408714	Cable Clutch Manual w/Spr.
36	196106	Pulley, Idler, Flat	186	197799	Arm Acuator CL Cable
37	19131316	Washer 13/32 x 13/16 x 16 Ga.	187	187800	Lever Control CL Cable
38	199189	Keeper Belt LH Mandrel	188	195161	Stud Fastener
40	73900600	Nut, Lock Flg. 3/8-16 unc	189	73900500	Nut Lock Hex Flange
42	198410	Spring Torsion Brake	192	197260	Bracket Brake Stand LH
43	197256	Spring Torsion Retainer	193	197801	Spring Plunger Actuator
46	137729	Screw Thd Roll 1/4-20 x 5/8	194	197797	Bearing Control Lever Clutch
47	197250	Bracket Clutch Cable	195	17000612	Screw Hexwsh Thdr 3/8-16 x 3/4
			--	192870	Mandrel Assembly (Includes housing, shaft and shaft hardware only-pulley not included)
			--	402942	Replacement Mower, Complete

NOTE: All component dimensions given in U.S. inches
1 inch = 25.4 mm

REPAIR PARTS

TRACTOR - - MODEL NUMBER PB195H42LT (96042003601), PRODUCT NO. 960 42 00-36
MOWER LIFT



KEY NO.	PART NO.	DESCRIPTION	KEY NO.	PART NO.	DESCRIPTION
2	195223	Shaft Asm., Lift	89	19191912	Washer Clear Zinc
3	195231	Lever Asm., Lift Rh	90	194208	Pin Cotter 5/16 Bow Tie Lock
7	196492X421	Grip, Lever	91	195181	Link Lift Susp Mower Rear
10	196314	Spring Torsion	97	17060612	Screw 3/8-16 x .75 Smgml Tap/ R.Z
87	194209	Pin Cotter 7/16 Bow Tie Lock	98	195270	Link Lift Susp. Front Mower
88	195303	Spring Lift Assist			

NOTE: All component dimensions given in U.S. inches
1 inch = 25.4 mm